

### SPECIFICATIONS

**Material:** E-SEELS -- Silicone rubber polymer type ASTM D 1418

**Mounting Nut:** E-SEELS: ALUMINUM INSERT

**Temperature Range:** E-SEELS: -80°F to +400°F

**Pressure Range:** Exceeds 15 psi internal and 1500 psi external.

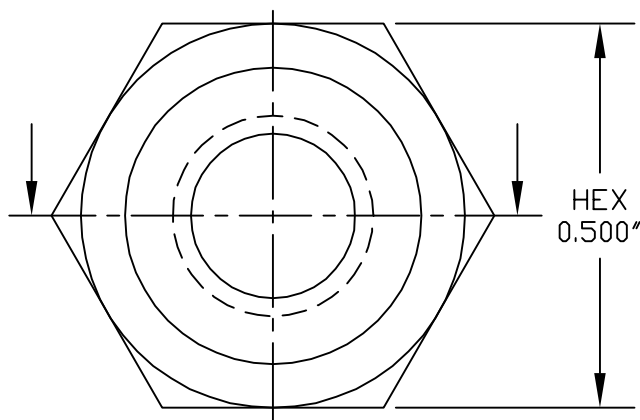
**Operational Life:** 50,000 actuations (minimum).

**Shelf Life:** Excess of 25 years.

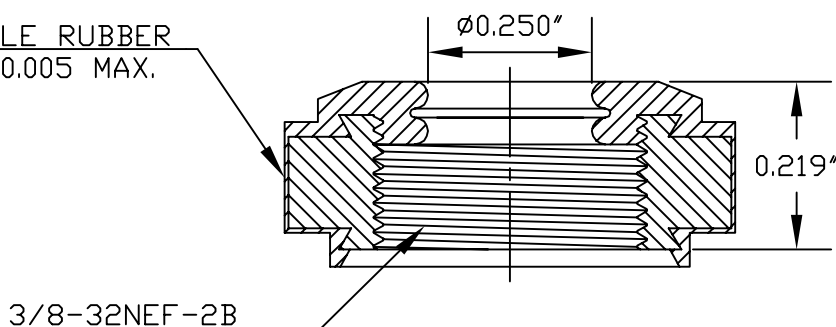
**Resistant to:** Salt spray, sunlight, ozone, weather, fungus, and most acids and lubricating oils

**Agency Recognition:** E-SEELS and HEXSEALS are UL-listed to UL Std. 50 types 1-13, and meet CSA standards.

**Installation:** If a reducing adaptor is required - see page 14 of HEXSEAL catalog HEX200 for part numbers and drawing.



PERMISSIBLE RUBBER  
OVERLAY 0.005 MAX.



H	CORRECTED DWG. NUMBER 1332/40 WAS 1232/40				07.08.08
G	CAD COMPUTER GENERATED				09.23.02
F	UPDATED				08.07.74
E	CORRECTED 11/64 WAS 9/64 and ADDED 9/64 TO RUBBER OVERLAY NOTE				10.23.68
D	REDRAWN				09.09.68
REV.	DESCRIPTION				DATE
MAXIMUM AND MINIMUM MEASUREMENTS ARE STATED DIRECTLY ON EACH DIMENSION.	TITLE:	ROTARY SHAFT SEAL (C1332/40)	ENG.	S. GOK	07.08.08
			DWN.	S. ANDREWS	12.11.59
			CHKD.	J. CELLA	07.08.08
MAT'L: SILICONE RUBBER ASTM D 1418	APM-HEXSEAL CORPORATION	SCALE 4 : 1	DWG. NO. (C1332/40) E-SEEL®		
FINISH: BLACK					

THIS DRAWING COVERS PROPRIETARY ITEM AND IS THE PROPERTY OF THE APM-HEXSEAL CORPORATION.  
THIS DRAWING IS NOT TO BE COPIED OR USED WITHOUT THE WRITTEN APPROVAL OF AN OFFICER OF THE APM-HEXSEAL CORPORATION.

# Mouser Electronics

Authorized Distributor

Click to View Pricing, Inventory, Delivery & Lifecycle Information:

[APM HEXSEAL:](#)

[C1332/40](#)