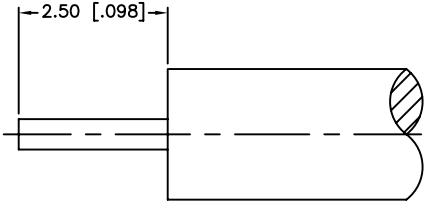
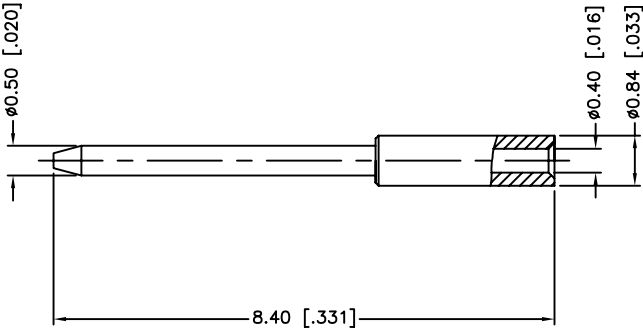
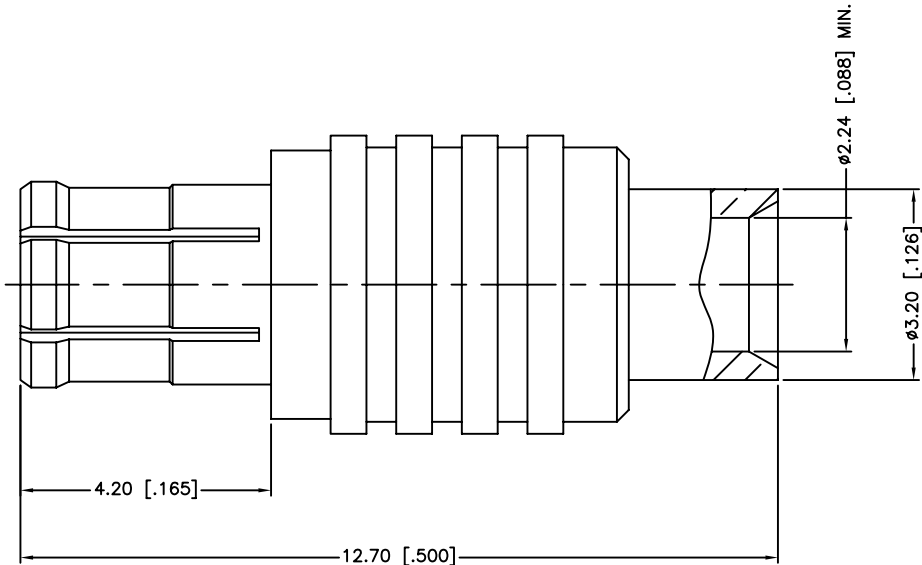


REV.	DATE	ECR NO.	DESCRIPTION
A	01/30/04	XXXXXX	UPDATE DRAWING FORMAT
B	05/03/11	2171	CHANGE THE PART NO. TO 252107-75



RECOMMENDED  
CABLE STRIPPING DIM'S



1. CONTACT PIN TO SOLDER

					<div>UNLESS OTHERWISE SPECIFIED DIMENSIONS ARE IN MILLIMETERS. DIMENSIONS IN [ ] ARE IN INCHES AND FOR CUSTOMER REFERENCE ONLY.</div> <div>UNLESS OTHERWISE SPECIFIED TOLERANCES FOR MILLIMETERS ARE: 0.5 – 8mm ± 0.20mm 8 – 30mm ± 0.40mm 30 – 120mm ± 0.50mm</div> <div>UNLESS OTHERWISE SPECIFIED TOLERANCES FOR INCHES ARE: .020 – .315 = ± 0.007" .315 – 1.180 = ± 0.015" 1.180 – 4.724 = ± 0.020"</div> <div>DO NOT SCALE DRAWING</div>	APPROVALS		DATE		<div>Amphenol Connex</div>				
DRAWN		M.ZHANG		05/03/11										
CHECKED						<div>PART DESCRIPTION</div> <div>MCX DIRECT SOLDER PLUG (FOR .085", .086" CABLE)</div>								
ISSUED														
SHEET		1 OF 1												
					PART NO. 252107-75									
					DWG. NO. 252107-75.DWG				REV. B		SIZE A		SCALE NA	
3	CONTACT PIN	BRASS	GOLD	1										
2	INSULATOR	PTFE	NATURAL	1										
1	BODY	BER. COPPER	GOLD	1										
DESCRIPTION		MATERIAL		FINISH	QTY									

# Mouser Electronics

Authorized Distributor

Click to View Pricing, Inventory, Delivery & Lifecycle Information:

[Amphenol:](#)

[252107-75](#)