



FCIconnect.com

Copyright FCI

PRODUCT NUMBER

SEE TABLE

68046 - XXX - LF

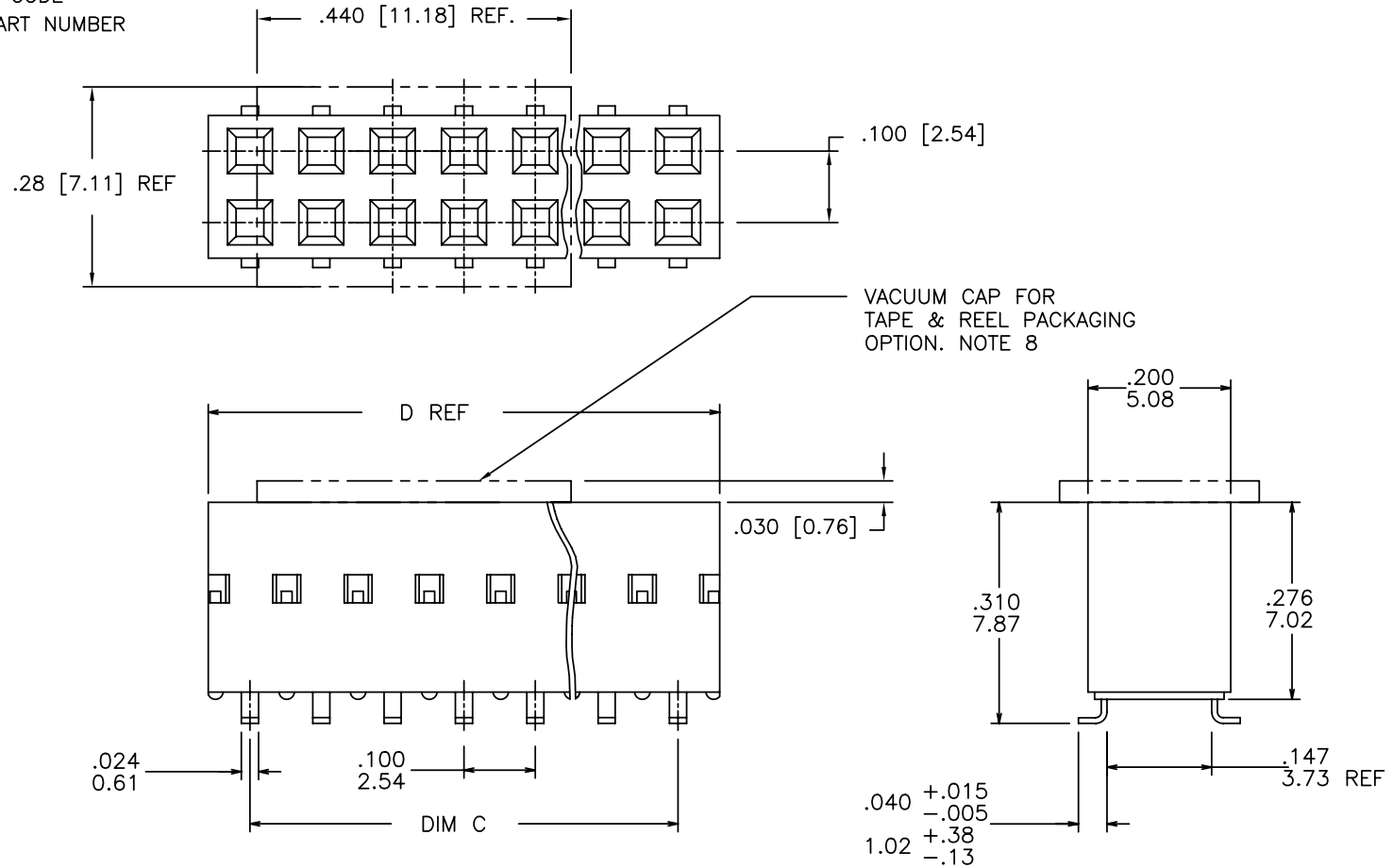
LEAD FREE OPTION

PACKAGING OPTION NOTE 6. OMIT IF NOT REQUIRED

NO OF POSITIONS PER ROW

PLATING CODE

BASE PART NUMBER



mat'l. code				surface		tolerance		projection		product family	
				ISO 1302 ✓		ISO 406 ISO 1101				DUBOX	
ltr		ecn nodr		date		tolerances unless otherwise specified				title	
AV		N-005264		SH 2011-8-25		angles linear				SMT DOUBLE ROW VCC ASSEMBLY	
AN		V04-0986		DAI 10/13/04							
AP		V04-1003		DAI 10/25/04		0'±2'		scale 1:1			
AR		V05-0463		DPU 06/28/05		dr		J. SHREINER		11/07/90	
AS		M07-0143		ERE 03/03/07		engr		M. HAHN		11/07/90	
AT		M07-0203		AGS 5/02/07		chr		M. HAHN		11/07/90	
AU		M08-0065		MHT 3/04/05		appd		M. HAHN		11/07/90	
sheet		revision		AV		AV		AV		AV	
index		sheet		1		2		3		4	
				5							

PDS: Rev :AV

STATUS: Released

Printed: Aug 24, 2011

PRODUCT NUMBER NOTE 15	PLATING CONTACT AREA	PLATING SOLDER TAIL	MATERIAL REF
68046-2XX	15μ"/.38μ Au OR GXT MIN OVER 50μ"/1.27μ Ni MIN	100μ"/160μ" 2.54μ/4.06μ SN	NOTE 3&4
68046-3XX	30μ"/.76μ Au OR GXT MIN OVER 50μ"/1.27μ Ni MIN	100μ"/160μ" 2.54μ/4.06μ SN	NOTE 3&4
68046-4XX	100μ"/2.54 SN MIN OVER 50μ"/1.27μ Ni MIN	100μ"/160μ" 2.54μ/4.06μ SN	NOTE 3,4&17
68046-6XX	30μ"/.76μ Au OR GXT MIN OVER 50μ"/1.27μ Ni MIN	100μ"/160μ" 2.54μ/4.06μ SN	NOTE 3&4
68046-8XX	30μ"/.76μ Au MIN OVER 50μ"/1.27μ Ni MIN	200μ"/5.08μ SL MIN	NOTE 3&4

OBSOLETE

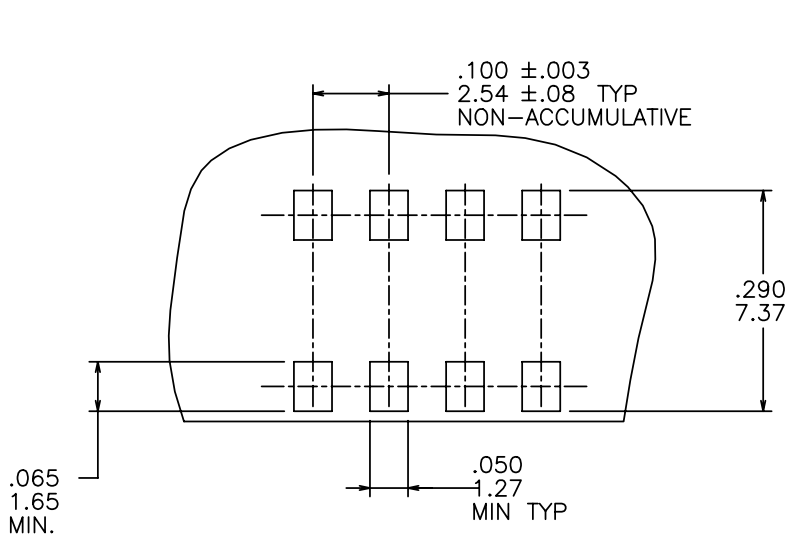


FIGURE A
TOP ENTRY
.025/.64 SQ PIN

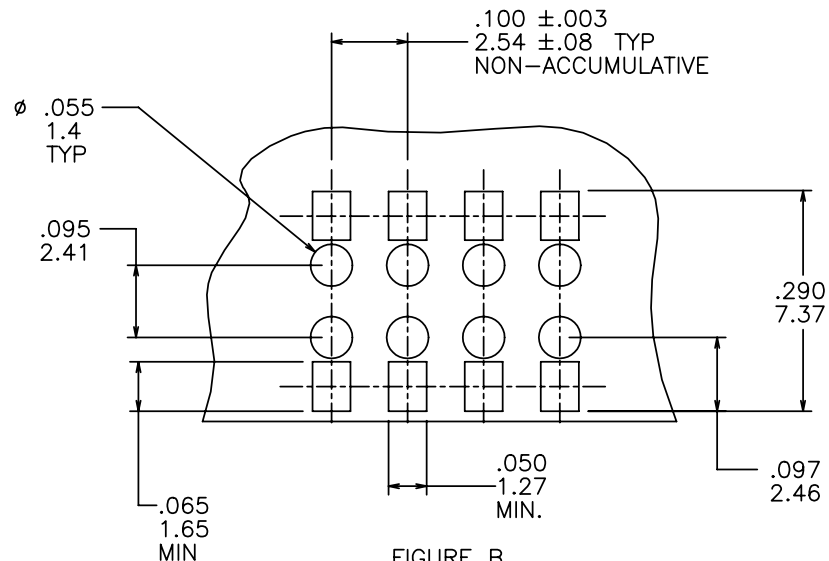
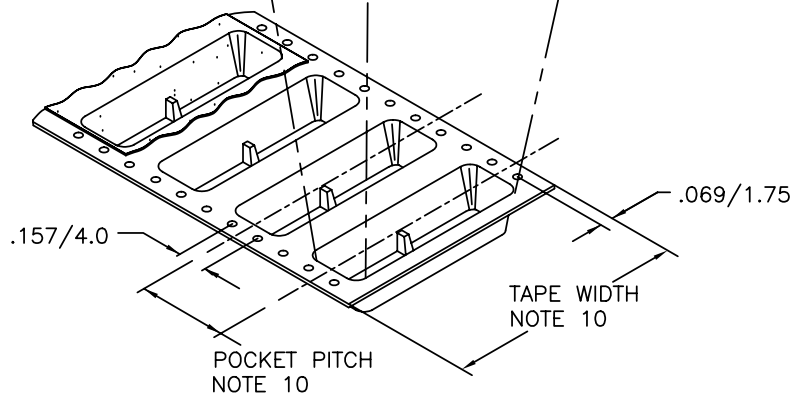


FIGURE B
BOTTOM ENTRY (THROUGH PWB)
.025/.64 SQ PIN

mat'l. code		surface ISO 1302 ✓		tolerance ISO 406 ISO 1101		projection INCH/MM		product family DUBOX	
l'tec n n d r date		tolerances unless otherwise specified		line		scale 1:1		title SMT DOUBLE ROW VCC ASSEMBLY	
AV		angles		line				dwg no	
		0°±2°						68046	
		dr	J. SHREINER	11/07/90				sheet 2 of 5	
		enr	M. HAHN	11/07/90				size A3	
		chr	M. HAHN	11/07/90				type Product Customer Drawing	
		app	M. HAHN	11/07/90					
sheet index	revision sheet								

VACUUM PICK-UP CAP
CENTRALLY LOCATED

DUBOX VERTICAL RECEPTACLE
DOUBLE ROW



TAPE AND REEL PACKAGING

SEE NOTE 7

NOTES:

1. TERMINAL MATERIAL: PHOSPHOR BRONZE.
EXTRA HARD
2. RECOMMENDED APPLICATION DATA:
 - A. RECOMMENDED SOLDER PAD PATTERN IS SHOWN IN FIGURE A & B.
 - B. ALL MATING PINS TO BE .025/.64 SQUARE ON TRUE CENTER OF ON GIVEN TERMINAL SPACING WITHIN .015/.38 DIA.
 - C. SUGGESTED MATING PIN LENGTH .210±.010 [5.33±.51]
3. HOUSING MATERIAL: P.P.S. FILLED.
FLAME RETARDANT PER UL-94-V0.
COMPATIBLE WITH INFRA-RED SOLDERING.
COLOR: BLACK
PART WILL WITHSTAND EXPOSURE TO 260° C PEAK TEMPERATURE FOR 20 SEONDS IN WAVE SOLDER,INFRA-RED OR VAPOR PHASE SOLDER PROCESS.
4. PRESTAMPED POST PLATED TERMINAL.
5. FCI, FCI FINAL PART NUMBER AND DATE CODE TO BE MARKED ON TUBE LABEL.
6. ADD SUFFIX 'P' TO DASH NUMBER AS FOURTH DIGIT FOR TAPE & REEL PACKAGING.
7. TAPE AND REEL PACKAGING PER GES-14-334.
8. VACUUM CAP MATERIAL: L.C.P., FLAME RETARDANT UL 94 V-0.
COLOR : BLACK
CAP IS USED WITH TAPE AND REEL PACKAGING.
CAP IS TO BE CENTRALLY LOCATED ON PART.
9. TAPE AND REEL PACKAGING FOR 24mm WIDE AND BELOW HAVE PILOT HOLES ON ONE SIDE OF TAPE ONLY. SIZES ABOVE 24mm HAVE PILOT HOLES ON BOTH OF TAPE.
10. TAPE & REEL PACKAGING 24mm AND 32mm TAPE WIDTH, WITH 112mm POCKET PITCH.
11. MAXIMUM LENGTH OF CONNECTOR FOR TAPE AND REEL PACKAGING IS 2.50 LONG /63.5mm
12. PART NUMBER WITH SUFFIX "U" IS FOR SAWING PURPOSES ONLY.
13. STANDARD TUBE PACKAGE PER BUS-14-097/3.
14. TAPE & REEL PACKAGING 72mm TAPE WIDTH WITH 16mm POCKET PITCH.
15. ADD LF SUFFIX AT THE END OF PART NUMBER FOR LEAD FREE OPTION
16. THESE PRODUCTS MEETS EUROPEAN UNION DIRECTIVES AND OTHER COUNTRY REGULATION AS DESCRIBED IN GS-22-008.
17. "THIS PRODUCT HAS 100% TIN PLATING IN THE INTERFACE AND HAS NOT BEEN TESTED FOR WHISKER GROWTH IN ALL INTERCONNECT ENVIRONMENTS".

mat'l. code		surface <input checked="" type="checkbox"/> ISD 406 <input checked="" type="checkbox"/> ISD 1302 <input type="checkbox"/> ISD 1101		tolerance	projection	product family	
ltn ecn nodr		date		tolerances unless otherwise specified		DUBOX	
AV				angles	linea	title	
				0°±2°	XXX±.01/XX±.3 XXX±.0005/XX±.13 XXX±.0020/XXX±.05	SMT DOUBLE ROW VCC ASSEMBLY	
				dr	J. SHREINER 11/07/90	dwg no	
				engr	M. HAHN 11/07/90	sheet 3 of 5	
				chr	M. HAHN 11/07/90	68046	
				appd	M. HAHN 11/07/90	A3	
sheet		revision		scale 1:1		type Product Customer Drawing	
index		sheet					

1

2

3

4

5

6

PRODUCT NUMBER

NO. OF POS.

C DIM

D DIM

TAPE & REEL PACKAGING

LF OPTION

68046-Y02

2 X 2

.100/2.540

.217/5.511

NO

-Y03

2 X 3

.200/5.080

.317/8.051

NO

-Y04

2 X 4

.300/7.620

.417/10.591

NO

-Y05

2 X 5

.400/10.160

.517/13.131

NO

-Y06

2 X 6

.500/12.700

.617/15.671

NO

-Y07

2 X 7

.600/15.240

.717/18.211

NO

-Y08

2 X 8

.700/17.780

.817/20.751

NO

-Y09

2 X 9

.800/20.320

.917/23.291

NO

-Y10

2 X 10

.900/22.860

1.017/25.831

NO

-Y11

2 X 11

1.000/25.400

1.117/28.371

NO

-Y12

2 X 12

1.100/27.940

1.217/30.911

NO

-Y13

2 X 13

1.200/30.480

1.317/33.451

NO

-Y14

2 X 14

1.300/33.020

1.417/35.991

NO

-Y15

2 X 15

1.400/35.560

1.517/38.531

NO

-Y16

2 X 16

1.500/38.100

1.617/41.071

NO

-Y17

2 X 17

1.600/40.640

1.717/43.611

NO

-Y18

2 X 18

1.700/43.180

1.817/46.151

NO

-Y19

2 X 19

1.800/45.720

1.917/48.691

NO

-Y20

2 X 20

1.900/48.260

2.017/51.231

NO

-Y21

2 X 21

2.000/50.800

2.117/53.771

NO

-Y22

2 X 22

2.100/53.340

2.217/56.311

NO

-Y23

2 X 23

2.200/55.880

2.317/58.851

NO

-Y24

2 X 24

2.300/58.420

2.417/61.391

NO

68046-Y25

2 X 25

2.400/60.960

2.517/63.931

NO

NOTE 15

FCI

FCIconnect.com

Copyright FCI

mat'l. code

surface
ISO 1302 ✓

tolerance
ISO 406
ISO 1101

projection
INCH/MM

product family
DUBOX

ltr ecn nodr date

tolerances unless otherwise specified

title
SMT DOUBLE ROW
VCC ASSEMBLY

AV

angles

linea

XX±.01/XX±.3
XXX±.0005/XXX±.13
XXXX±.0020/XXX±.05

scale 1:1

dwg no
68046

sheet # of 5
A3

dr J. SHREINER 11/07/90

engr M. HAHN 11/07/90

chr M. HAHN 11/07/90

appd M. HAHN 11/07/90

type Product Customer Drawing

sheet index



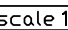
revision sheet

41

STATUS Released

Printed: Aug 24, 2011

NOTE 15

mat'l. code				surface <input checked="" type="checkbox"/> tolerance <input type="checkbox"/>		projection 		product family DUBOX			
ltr ecn nodr date				ISO 1302 <input checked="" type="checkbox"/> ISO 406 <input type="checkbox"/> ISO 1101 <input type="checkbox"/>				title SMT DOUBLE ROW VCC ASSEMBLY			
AV				tolerances unless otherwise specified							
				angles linear		INCH/MM		dwg no 68046 type Product Customer Drawing			
				$\pm 0.01 / \pm 0.3$		scale 1:1					
				$\pm 0.005 / \pm 0.13$							
				$0 \pm 2^\circ$		$\pm 0.0020 / \pm 0.05$		sheet 5 of 5 size A3			
				dr J. SHREINER 11/07/90							
				engr M. HAHN 11/07/90							
				chr M. HAHN 11/07/90							
				appd M. HAHN 11/07/90							
sheet index		revision sheet									