

# Customer Information Sheet

DRAWING No.: M7965/66/67/71-XX

SHEET 2 OF 2

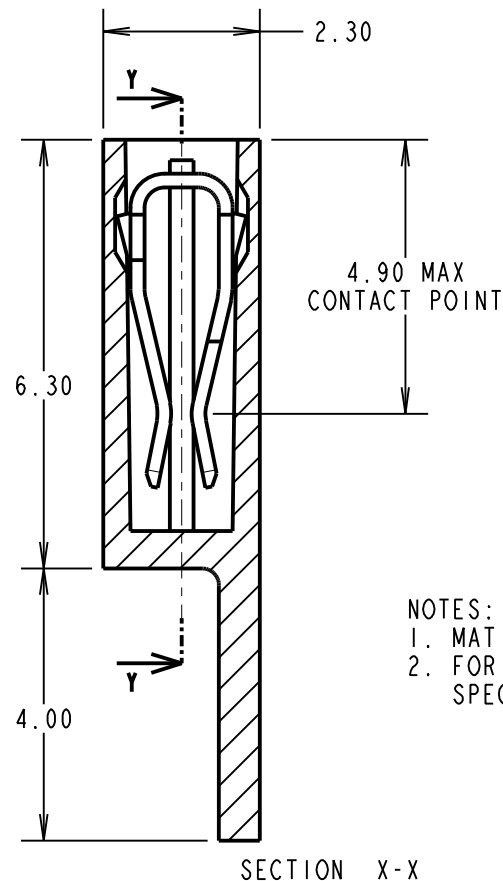
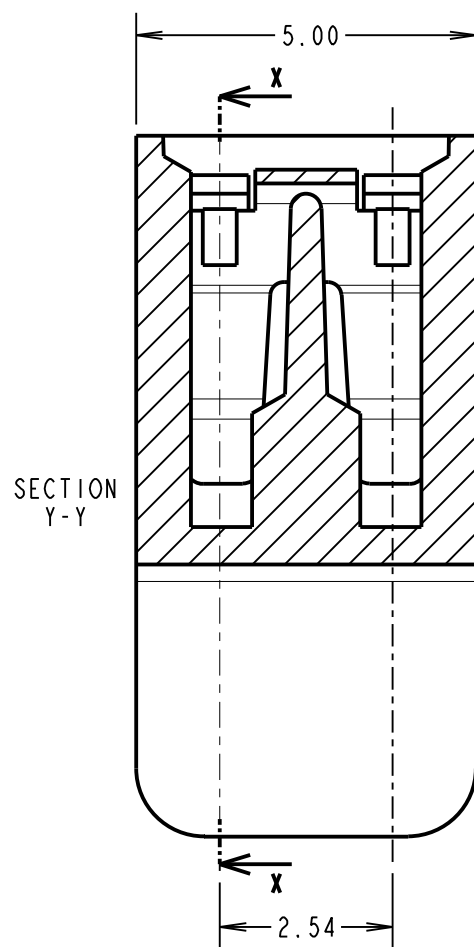
IF IN DOUBT - ASK

(C)

NOT TO SCALE

THIRD ANGLE PROJECTION

ALL DIMENSIONS IN mm



## SPECIFICATIONS:

### MATERIAL:

MOULDING = GLASS FILLED POLYESTER UL94V-0  
(SEE ORDER CODE FOR COLOUR)

CLIP = PHOSPHOR BRONZE

### FINISH:

05 = 0.13µ GOLD

46 = 3µ 100% TIN

### ELECTRICAL:

CURRENT RATING = 3A MAX

VOLTAGE RATING = 250V AC/DC

VOLTAGE PROOF = 750V AC

CONTACT RESISTANCE = 30mΩ MAX (TIN), 25mΩ MAX (GOLD)

INSULATION RESISTANCE = 1,000MΩ MIN

### MECHANICAL:

DURABILITY = 50 OPERATIONS (TIN), 300 OPERATIONS (GOLD)

INSERTION FORCE = 14.5N MAX

WITHDRAWAL FORCE = 1.0N MIN

### ENVIRONMENTAL:

TEMPERATURE RANGE = -40°C TO +85°C

### PACKING:

BAG

## NOTES:

1. MATING PIN = 0.64mm SQUARE,
2. FOR COMPLETE SPECIFICATIONS, SEE COMPONENT SPECIFICATION C003XX (LATEST ISSUE).

## ORDER CODE:

**M79XX-XX**

## MOULDING COLOUR

65 - LT. GREY

67 - BLACK

66 - RED

71 - BLUE

## CONTACT FINISH

05 - GOLD

46 = 100% TIN

|                    |      |          |        |
|--------------------|------|----------|--------|
| MSP                | 8    | 22.10.14 | 12634  |
| NAME               | ISS. | DATE     | C/NOTE |
| APPROVED: M.PERREN |      |          |        |
| CHECKED: M.PLESTED |      |          |        |
| DRAWN: J.CLAY      |      |          |        |
| CUSTOMER REF.:     |      |          |        |
| ASSEMBLY DRG:      |      |          |        |

# HARWIN

www.harwin.com  
technical@harwin.com

THIS DRAWING AND ANY  
INFORMATION OR DESCRIPTIVE  
MATTER SET OUT HEREON ARE  
CONFIDENTIAL AND COPYRIGHT  
PROPERTY OF THE HARWIN  
GROUP AND MUST NOT BE  
DISCLOSED, LOANED, COPIED  
OR USED FOR MANUFACTURING,  
TENDERING OR FOR ANY  
OTHER PURPOSE WITHOUT  
THEIR WRITTEN PERMISSION.

## TOLERANCES

X. = ±1mm

X.X = ±0.25mm

X.XX = ±0.10mm

X.XXX = ±0.01mm

ANGLES = ±5°

UNLESS STATED

## MATERIAL:

SEE ABOVE

## FINISH:

SEE ABOVE

## S/AREA:

mm<sup>2</sup>

## TITLE:

JUMPER SOCKET  
(CLOSED TOP WITH HANDLE)

## DRAWING NUMBER:

**M7965-XX, M7966-XX,  
M7967-XX, M7971-XX**

SHT  
2  
OF  
2

# Mouser Electronics

Authorized Distributor

Click to View Pricing, Inventory, Delivery & Lifecycle Information:

Harwin:

[M7965-05](#) [M7971-05](#) [M7967-05](#) [M7966-05](#) [M7965-46](#) [M7966-46](#) [M7967-46](#) [M7971-46](#)