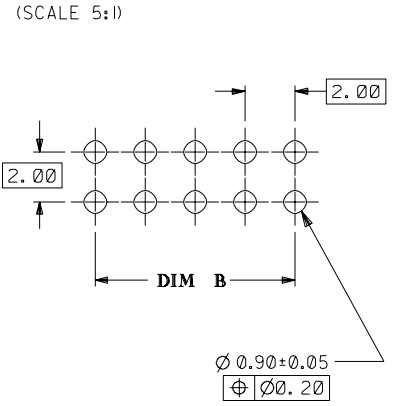


PART NUMBER LEGEND

87089 - * * * *
 CKT SIZE PLATING
 16 (SEE NOTE 4)
 17

RECOMMENDED PCB PATTERN



PART NO.	CKT SIZE	DIM A	DIM B
87089-02**	2	NA	NA
87089-04**	4	3.90	2.00
87089-06**	6	5.90	4.00
87089-08**	8	7.90	6.00
87089-10**	10	9.90	8.00
87089-12**	12	11.90	10.00
87089-14**	14	13.90	12.00
87089-16**	16	15.90	14.00
87089-18**	18	17.90	16.00
87089-20**	20	19.90	18.00
87089-22**	22	21.90	20.00
87089-24**	24	23.90	22.00
87089-26**	26	25.90	24.00
87089-28**	28	27.90	26.00
87089-30**	30	29.90	28.00
87089-32**	32	31.90	30.00
87089-34**	34	33.90	32.00
87089-36**	36	35.90	34.00
87089-38**	38	37.90	36.00
87089-40**	40	39.90	38.00
87089-42**	42	41.90	40.00
87089-44**	44	43.90	42.00
87089-46**	46	45.90	44.00
87089-48**	48	47.90	46.00
87089-50**	50	49.90	48.00

NOTES:

- 4 & 6 CKT SIZE ARE MADE BY BREAKING ASSEMBLY P/N 87089-081* AND P/N 87089-121* INTO HALVES RESPECTIVELY. BREAK-AWAY PROFILES ARE EXPECTED TO BE IRREGULAR.
- 2 CKT SIZE ARE MADE BY BREAKING LARGER ASSEMBLY P/N, THE CUT PROFILES ARE IRREGULAR AND UNDEFINED.
- 10 CIRCUIT SIZE SHOWN FOR ILLUSTRATION ONLY. SEE CHART FOR AVAILABLE PART SIZES.
- PLATING FINISH :
 16 - 0.38um/15uin MIN. GOLD SELECTIVE AREA
 1.90um/75uin MIN. TIN/LEAD IN SELECTED AREA OVER
 1.27um/50uin MIN. NICKEL OVERALL
 17 - 0.76um/30uin MIN. GOLD SELECTIVE AREA
 1.90um/75uin MIN. TIN/LEAD IN SELECTED AREA OVER
 1.27um/50uin MIN. NICKEL OVERALL
- PRODUCT SPECIFICATION PS-87049 APPLIES
- RECOMMENDED PC BOARD THICKNESS IS 1.60 ± 0.10mm. mm

SHT	1	2
REV	E3	E3

E3	ADD T/R OPT. (SHT 2) AS PER 97-01-0142 FOR MOLEX INC.	S70422	SEE	970224
E2	ADD 2 CKT SIZE	S60168	SEE	GMS 950929
E1	REVISED HOUSING MAT'L	S40030	JACK LING	930814
LTR	REVISION RECORD	ECN	DR	CHK DATE

MATERIAL : 30% G.F. NYLON 46, 94V-0 ,COLOR-BLACK
 PIN: 0.50mm SQ. PHOSPHOR BRONZE 510
 FINISH :
 SEE NOTE 3
 DRAWN BY SUSAN KOH 890801
 APPR'D BY R. WONG 890803
 CHK'D BY J. KACHLIC 890802
 SCALE 10 : 1

MOLEX SINGAPORE PTE LTD
 SHEET 1 OF 2
 GENERAL TOLERANCES ± 0.20/0.008
 DWG. NO.: SD187089-**-16
 TITLE : "MILLI-GRID" 2mm DUAL ROW VERTICAL HEADER

REVISE ONLY ON CAD SYSTEM

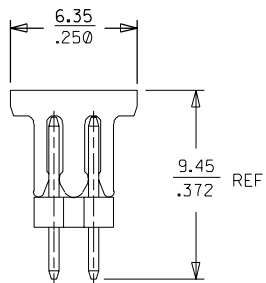
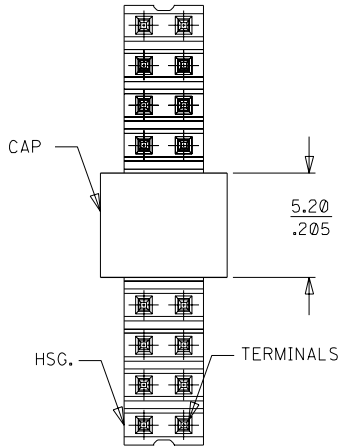
DWG. NO. SD 87089-***16

CAD FILE S089165.DGN

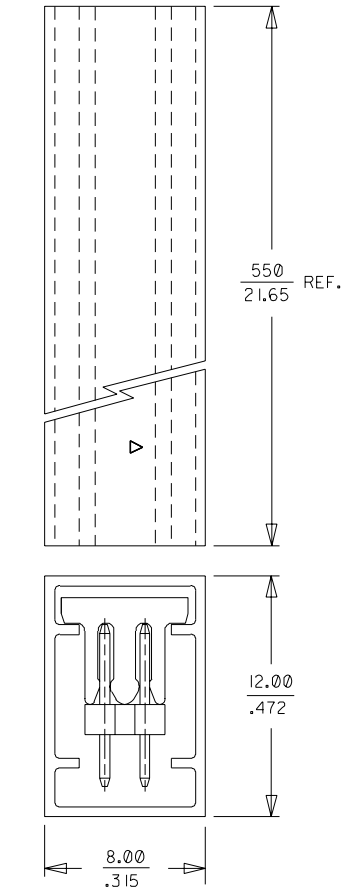
▽

DO NOT SCALE DRAWING

PART WITH CAP
(22 CKT SHOWN)
(SCALE 4:1)

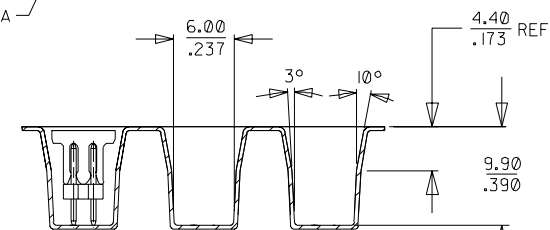
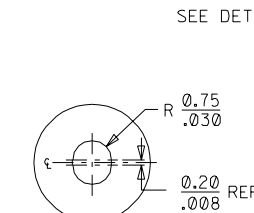
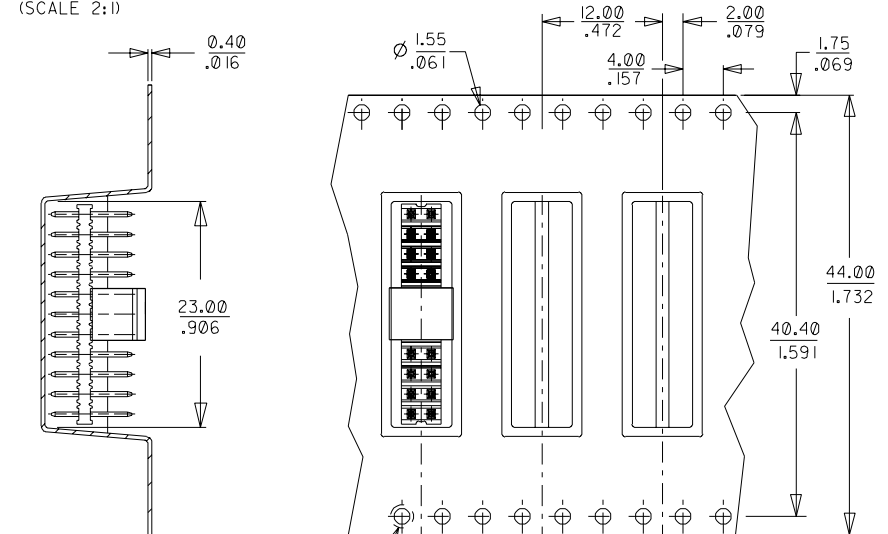


WITH CAP IN TUBE
(22 CKT SHOWN
FOR MOLEX INC.)
(SCALE 4:1)



PART NO.
WITH CAP IN TUBE
87089-5126

EMBOSSED CARRIER TAPE 'A'
(22 CKT SHOWN, FOR MOLEX INC.)
(SCALE 2:1)



mm

				MATERIAL : 30% G.F. NYLON 46, 94V-0 ,COLOR-BLACK PIN: 0.50mm SQ. PHOSPHOR BRONZE 510		MOLEX SINGAPORE PTE LTD SHEET 2 OF 2	
				FINISH :		GENERAL TOLERANCES ± 0.20/.008	
				SEE NOTE 3		REV E3	
E3 ADD T/R OPT. (SHT 2) AS PER 97-01-0142 FOR MOLEX INC.				570422	SEE	DWG. NO. SD 87089-***16	
LTR	REVISION RECORD	ECN	DR	CHK	DATE	TITLE : "MILLI-GRID" 2mm DUAL ROW VERTICAL HEADER	
						DRAWN BY SUSAN KOH 890801	
						CHK'D BY J. KACHLIC 890802	
						APPR'D BY R. WONG 890803	
REVISE ONLY ON CAD SYSTEM						SCALE 2 : 2	