

4-CHANNEL PROGRAMMABLE LED CURRENT

Description

The PAM2810 provides 4 regulated current sinks, capable of sinking up to 40mA current to accommodate 4 white LEDs. It requires no charge pump, has no noise and EMI, and significantly improves the efficiency in Li battery range.

LED brightness can be controlled by PWM techniques. The constant current sink is set with an external sense resistor.

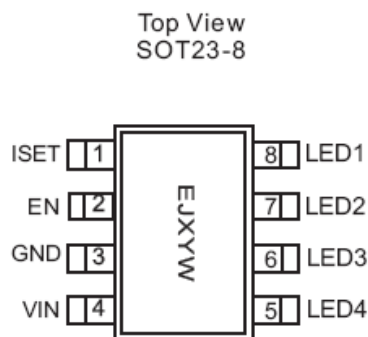
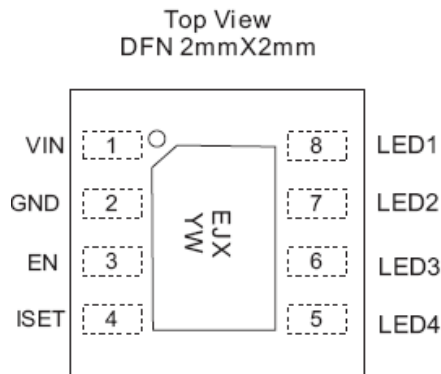
Alternatively, a PWM signal applied to the EN pin can vary the anticipated brightness of the LED. The device is in shut down mode when the EN input is logic low.

The PAM2810 is available in SOT23-8 and DFN2mmx2mm packages.

Features

- Cost Effective LED Driver
- Support up to 4 White LEDs
- Output Current up to 40mA per LED
- Low Dropout Voltage
- Ultra Low Quiescent Supply Current: 65 A (typ)
- No Noise and EMI
- Shutdown Current Less than 1 A
- Over Temperature Protection
- Small Packages : SOT23-8 and DFN2mmx2mm
- Pb-free Package

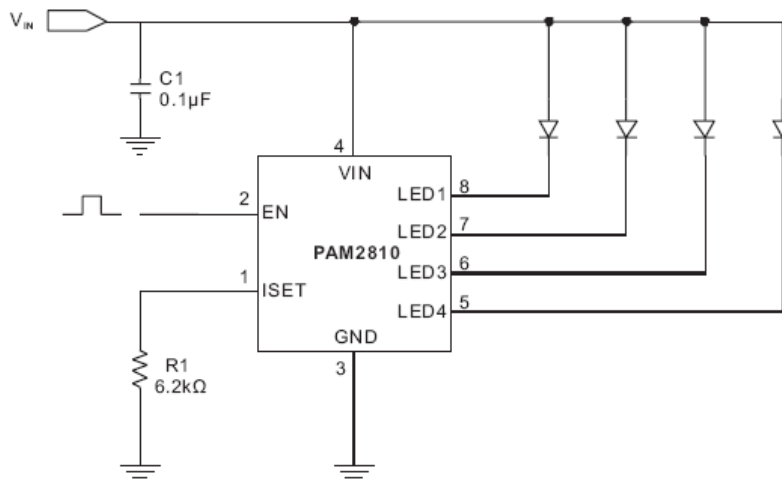
Pin Assignments



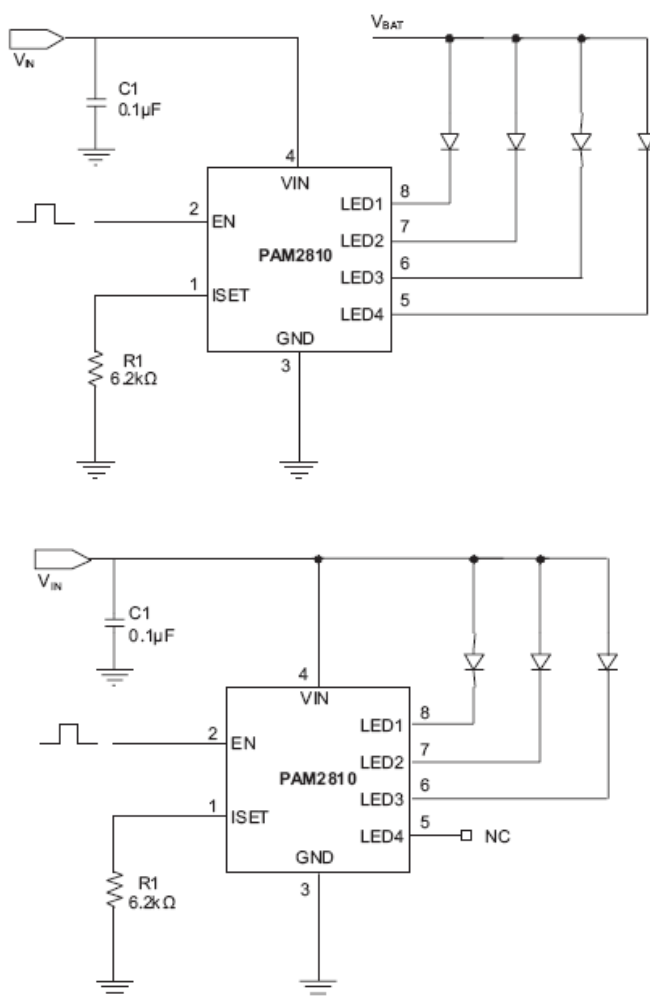
Applications

- White LED for LCD Display Backlights
- White LED Keypad Backlights
- 1-Cell Li-Ion Battery-operated Equipment Including:
 - PDAs
 - Hand-Held PCs
 - Cellular Phone

Typical Applications Circuit



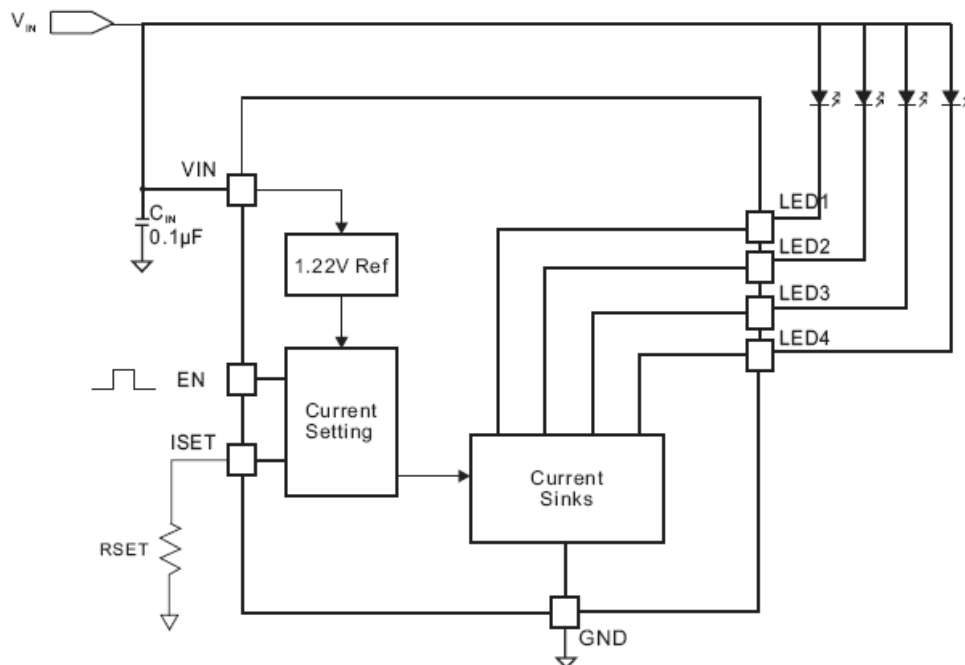
Typical Applications Circuit (cont.)



Pin Description

Pin Name	Pin Number		Function
	DFN2x2	SOT23-8	
VIN	1	4	Input Voltage
GND	2	3	Ground
EN	3	2	Enable, Allow PWM Brightness Control, Active High
ISET	4	1	LED Current Adjustment Pin
LED4	5	5	LED4 Cathode Terminal
LED3	6	6	LED3 Cathode Terminal
LED2	7	7	LED2 Cathode Terminal
LED1	8	8	LED1 Cathode Terminal

Block Diagram



Absolute Maximum Ratings (@T_A = +25°C, unless otherwise specified.)

These are stress ratings only and functional operation is not implied. Exposure to absolute maximum ratings for prolonged time periods may affect device reliability. All voltages are with respect to ground.

Parameter	Rating	Unit
Input Voltage Range	-0.3 to +6.0	V
PWM Pin Voltage	-0.3 to (V _{IN} + 0.3)/6V	
Maximum Junction Temperature	150	°C
Storage Temperature	-65 to +150	
Soldering Temperature	300, 5sec	

Recommended Operating Conditions (@T_A = +25°C, unless otherwise specified.)

Parameter	Rating	Unit
Input Voltage Range	2.7 to 5.5	V
Junction Temperature Range	-40 to +125	°C
Ambient Temperature Range	-40 to +85	

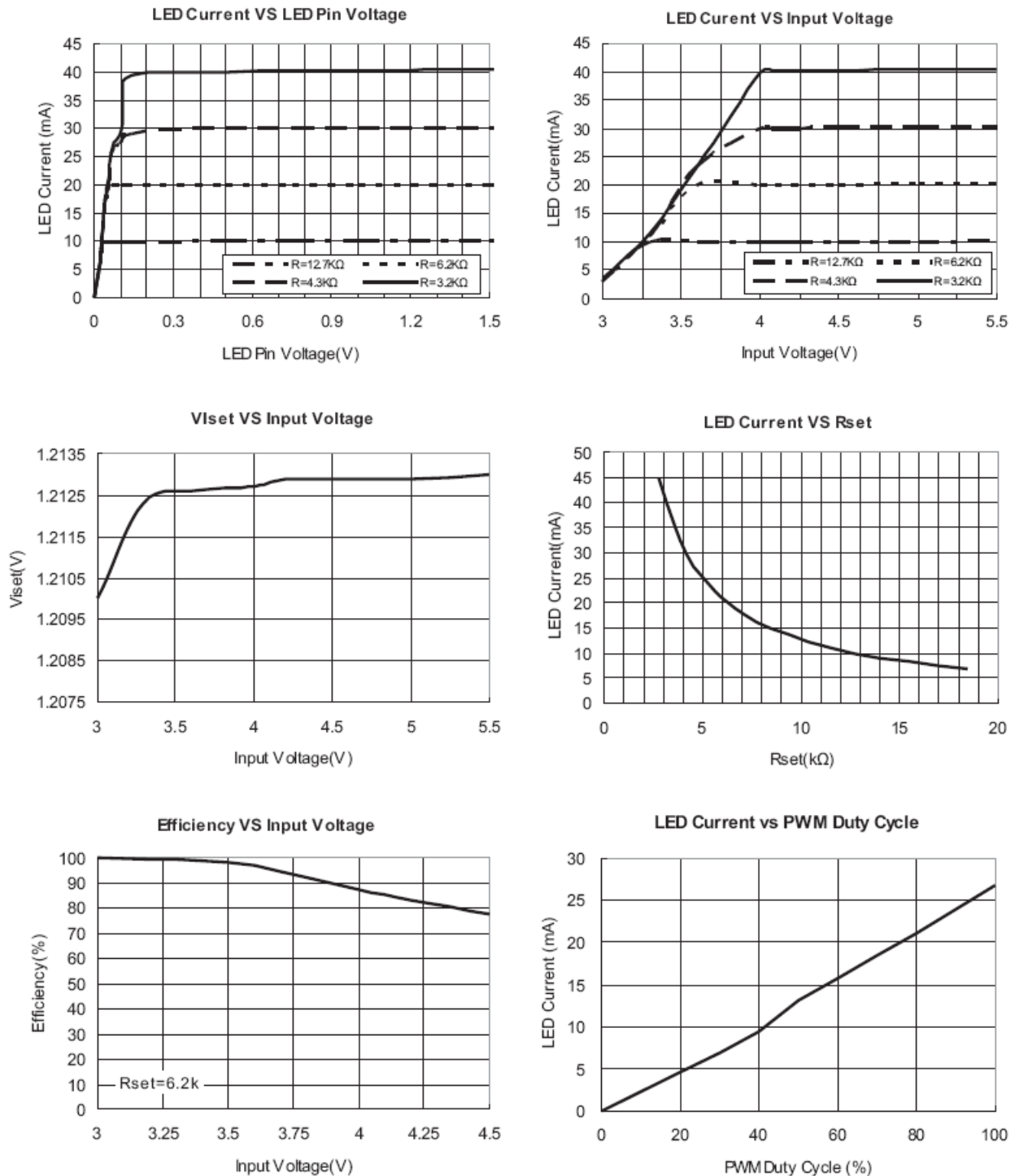
Thermal Information

Parameter	Symbol	Package	Max	Unit
Thermal Resistance (Junction to Ambient)	θ_{JA}	SOT23-8	250	°C/W
		DFN2x2-8	80	
Thermal Resistance (Junction to Case)	θ_{JC}	SOT23-8	130	
		DFN2x2-8	30	

Electrical Characteristics (@T_A = +25°C, V_{IN} = 3.6V, R_{SET} = 5.1kΩ, V_{LEDX} = 0.5V, unless otherwise specified.)

Parameter	Symbol	Test Conditions	Min	Typ	Max	Units
Input Voltage Range	V _{IN}		V _f = V _{LED} (Note 1)	3.6	5.5	V
Output Current	I _{LEDX}	V _{DD} = 5V			40	mA
Current Matching Between Any Two Outputs	I _{LED-MATCH}				±5	%
Current Sink Dropout	V _{DROPOUT}	R _{SET} = 3kΩ, I _{LEDX} = 40mA			0.25	V
ISET PIN Voltage	V _{SET}			1.22		V
Output Current to Current Set Ratio	I _{LEDX} /I _{SET}			100		
Quiescent Supply Current	I _Q	R _{SET} = 10MΩ, with no loads		65	80	μA
Shutdown Supply Current	I _{SHDN}	EN = Logic Low		0.1	1	μA
EN Input Logic High	V _{HI}		1.4			V
EN Input Logic Low	V _{LO}				0.4	V
EN Pin Current	I _{EN}	V(EN) = 1.5V		0.1	1	μA
		V(EN) = 0V		0.1	1	μA

Typical Performance Characteristics (@ $T_A = +25^\circ\text{C}$, $V_{IN} = 3.6\text{V}$, $R_{SET} = 5.1\text{k}\Omega$, $V_{LEDX} = 0.5\text{V}$, unless otherwise specified.)



Application Information

The PAM2810 is a 4-channel programmable white-LED driver. The matched current regulators each have a 100:1 ratio between the LEDx outputs and the ISET current. The PAM2810 is capable of supplying 40mA per channel with the proper selection of the external RSET resistor, with a total of 160mA output current available. LED brightness control of PAM2810 can be achieved with a PWM signal.

Output Current Capability

The PAM2810 is capable of providing up to 40mA per LED under an input voltage of 2.7V to 5.5V. An external resistor is used to set the output current, as approximated with the following equation:

$$R_{SET} = 100 * (1.22V / I_{LEDx})$$

In order that the output currents could be regulated properly, the LEDx pin voltage (V_{LEDx}) must be larger than the dropout voltage of the current sink ($V_{DROPOUT}$). To ensure the desired current is obtained, apply the following equation to determine the minimum input voltage:

$$V_{IN} - V_{DIODE} = V_{LEDx} \geq V_{DROPOUT}$$

V_{DIODE} is the diode forward voltage, and some typical value of $V_{DROPOUT}$ can be found from the following table.

Table 1. I_{LED} , R_{SET} and $V_{DROPOUT}$

I_{LED}	R_{SET}	$V_{DROPOUT}$
10mA	12.7k Ω	40mV
20mA	6.2k Ω	80mV
30mA	4.3k Ω	120mV
40mA	3.2k Ω	150mV

PWM Brightness Control

Brightness control can be realized by applying a PWM signal to the EN pin. The constant current is set by the external resistor selected using the RSET equation. The LED brightness is proportional to the duty cycle (D) of the PWM signal. The PWM frequency (f) should be limited to accommodate the start-up time (50 μ s) of the device.

$$D * (1/f) > 50\mu s$$

Table 2. PWM Frequency and Duty Cycle

Frequency	Cycle	Duty-Cycle Request
100Hz	10ms	$> \frac{0.5}{100}$
1kHz	1ms	$> \frac{5}{100}$
2kHz	500 μ s	$> \frac{10}{100}$
4kHz	250 μ s	$> \frac{20}{100}$
8kHz	125 μ s	$> \frac{40}{100}$
10kHz	100 μ s	$> \frac{50}{100}$

The maximum PWM frequency can be selected according to the table above.

If the PWM frequency is much less than 100Hz, flickering may be seen in the LEDs. For the PAM2810, zero duty cycle will turn off the LEDs and a 50% duty cycle will result in an average I_{LED} being half of the programmed LED current. For example, if RSET is set to program 20mA, a 50% duty cycle will result in an average I_{LED} of 10mA. RSET should be chosen not to exceed the maximum current capability of the device.

Application Information (cont.)

Shutdown

When the EN pin is logic low, the PAM2810 will be in shutdown mode. While disabled, the PAM2810 typically draws 0.1 μ A current from the power supply. There is no internal pull-up or pull-down on the EN pin.

Over Temperature Protection

The PAM2810 equips over temperature protection. When the junction temperature (T_J) exceeds +150°C, the current source turns off automatically. The device will turn on again after the IC's T_J cools down under +125°C. Operating at absolute maximum temperature is not recommended.

Parallel LEDx Outputs for Increased Current Drive

Output pins LED1 to LED4 may be connected together in any combination to sink higher current through fewer LEDs. For example in Figure 1, outputs LED1 and LED2 are connected together to drive one LED while LED3 and LED4 are connected together to drive a second LED.

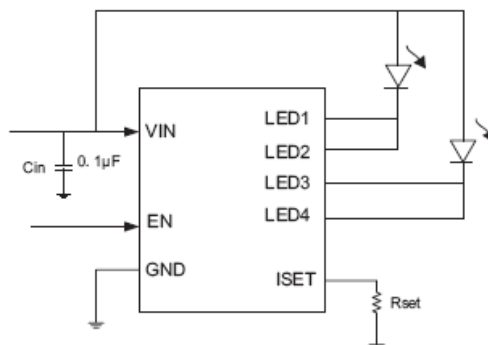


Figure 1. Two Parallel Connected LEDs

With this configuration, two parallel current sinks of equal value both provide current to each LED. If the current sink provides 10mA each, every LED can be driven with 20mA and gets double brightness. Other combinations of parallel outputs can be implemented similarly, such as in Figure 2.

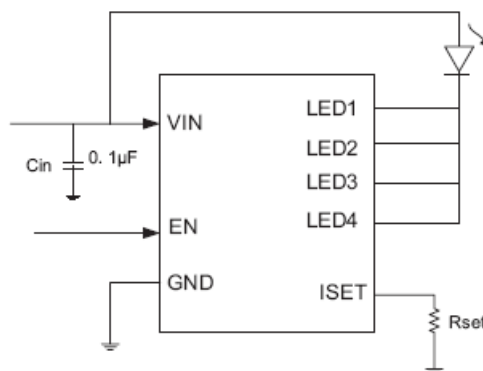


Figure 2. One Parallel Connected LED

Connecting outputs in parallel does not affect internal operation of the PAM2810 and has no impact on the electrical characteristics.

If less than four LEDs connected, the left pin can be floating or connected to GND, as shown in Typical Application Circuit on Page 2. Connecting to GND is recommended. The current calculating method is the same as the RSET equation mentioned.

Application Information (cont.)

Power Dissipation

The maximum allowable power dissipation that the package is capable of handling can be determined as follows:

$$R_{D\text{MAX}} = (T_{J(\text{MAX})} - T_A) / \theta_{JA}$$

Where $T_{J(\text{MAX})}$ is the maximum junction temperature, T_A is the ambient temperature, and θ_{JA} is the junction-to-ambient thermal resistance of the specified package. The DFN 2x2 package has a θ_{JA} of 80°C/W and the SOT23-8 250°C/W. This value of θ_{JA} is highly dependant upon the layout of the PCB. The actual power dissipated by the PAM2810 follows the equation:

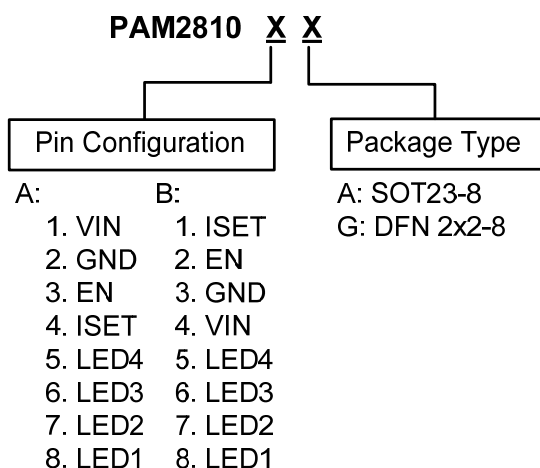
$$P_{\text{DISS}} = (V_{\text{IN}} * I_{\text{IN}}) - N(V_{\text{DIODE}} * I_{\text{LEDX}})$$

Where N equals the number of active outputs, V_{DIODE} is the LED forward voltage, and I_{LEDX} is the current supplied to the LEDx.

Input Capacitor Selection

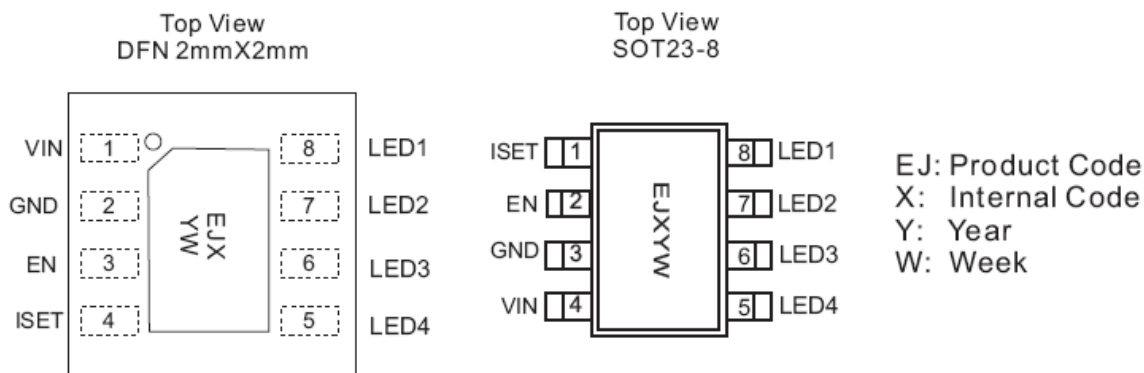
The PAM2810 is designed to work under a stable input voltage. To ensure the stability of input, it may be necessary to add a small input capacitor to help filter out any noise that probably appears on the line. Surface-mount multi-layer ceramic capacitors are recommended, which are small and inexpensive. A capacitance of 0.1µF is typically sufficient.

Ordering Information



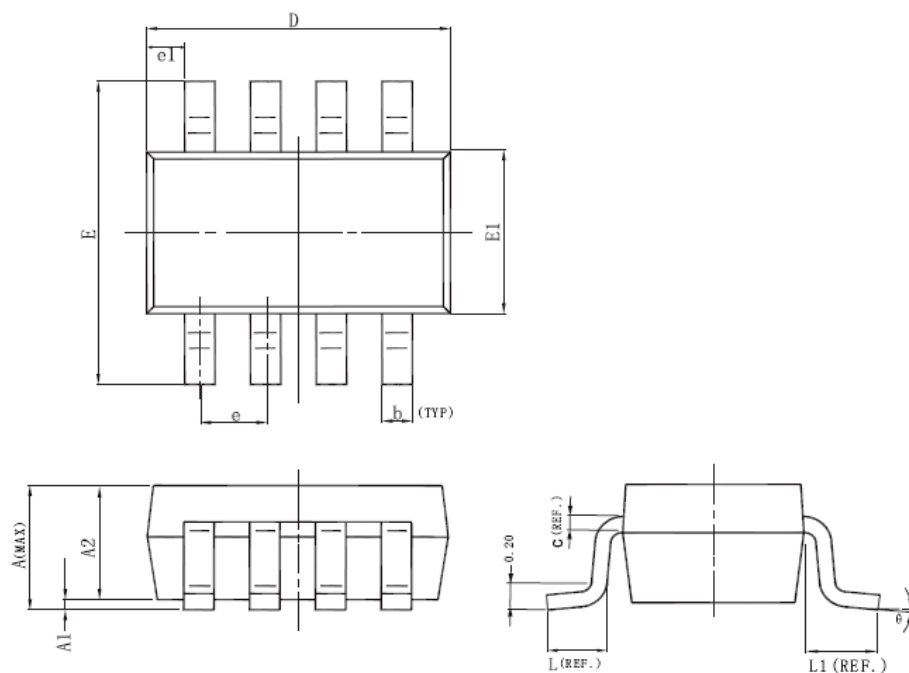
Part Number	Marking	Package Type	Standard Package
PAM2810AG	EJXYW	DFN 2x2-8	3000 Units/Tape&Reel
PAM2810BA	EJXYW	SOT23-8	3000 Units/Tape&Reel

Marking Information



Package Outline Dimensions (All dimensions in mm.)

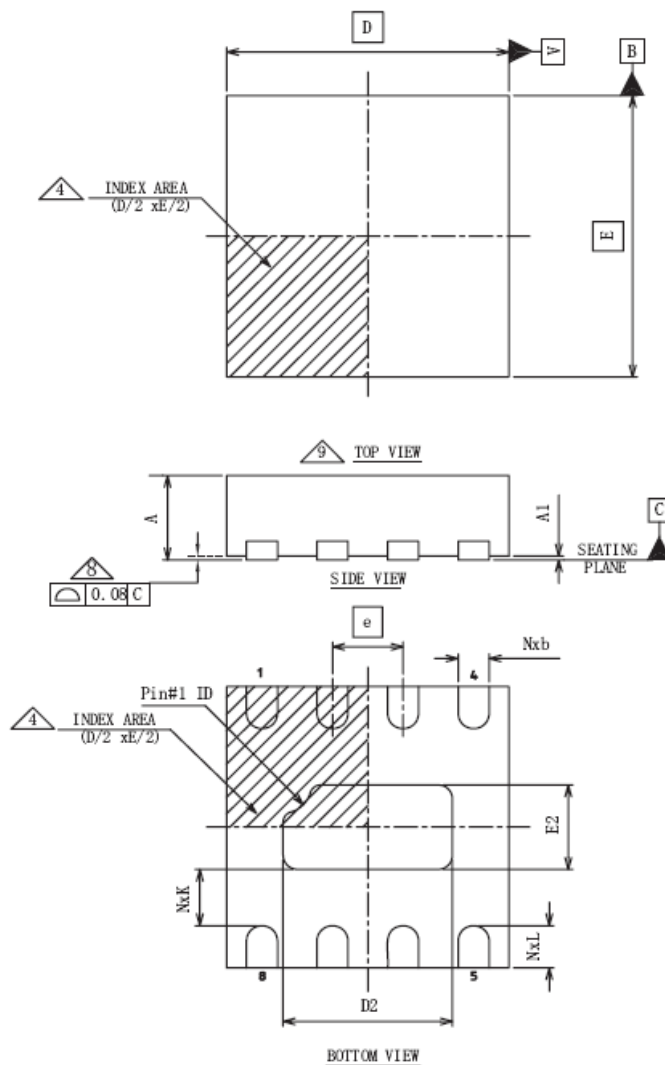
SOT23-8



Symbol	Dimensions In Millimeters		Symbol	Dimensions In Millimeters	
	Min	Max		Min	Max
A		1.45 MAX	L	0.30	0.60
A1	0	0.10	L1		0.60 (REF)
A2	1.10	1.30	θ	0°	10°
c		0.12 (REF)	b	0.22	0.38
D	2.70	3.10	e		0.65 (REF)
E	2.60	3.00	e1		0.33 (REF)
E1	1.40	1.80			

Package Outline Dimensions (cont.) (All dimensions in mm.)

DFN 2x2



COMMON DIMENSION			
SYMBOL	MIN	NOM	MAX
A	0.70	0.75	0.80
A1	0.00	0.02	0.05

Summary Table			
Lead Pitch (e)	Lead Count	Body Size	Pin #1 ID
0.50	8	2X2	R0.20

D BSC		2.00
E BSC		2.00
b	MIN	0.18
	NOM	0.25
	MAX	0.30
D2	MIN	1.05
	NOM	1.20
	MAX	1.30
E2	MIN	0.45
	NOM	0.60
	MAX	0.70
L	MIN	0.20
	NOM	0.30
	MAX	0.40
N		8

Unit: Millimeters

IMPORTANT NOTICE

DIODES INCORPORATED MAKES NO WARRANTY OF ANY KIND, EXPRESS OR IMPLIED, WITH REGARDS TO THIS DOCUMENT, INCLUDING, BUT NOT LIMITED TO, THE IMPLIED WARRANTIES OF MERCHANTABILITY AND FITNESS FOR A PARTICULAR PURPOSE (AND THEIR EQUIVALENTS UNDER THE LAWS OF ANY JURISDICTION).

Diodes Incorporated and its subsidiaries reserve the right to make modifications, enhancements, improvements, corrections or other changes without further notice to this document and any product described herein. Diodes Incorporated does not assume any liability arising out of the application or use of this document or any product described herein; neither does Diodes Incorporated convey any license under its patent or trademark rights, nor the rights of others. Any Customer or user of this document or products described herein in such applications shall assume all risks of such use and will agree to hold Diodes Incorporated and all the companies whose products are represented on Diodes Incorporated website, harmless against all damages.

Diodes Incorporated does not warrant or accept any liability whatsoever in respect of any products purchased through unauthorized sales channel.

Should Customers purchase or use Diodes Incorporated products for any unintended or unauthorized application, Customers shall indemnify and hold Diodes Incorporated and its representatives harmless against all claims, damages, expenses, and attorney fees arising out of, directly or indirectly, any claim of personal injury or death associated with such unintended or unauthorized application.

Products described herein may be covered by one or more United States, international or foreign patents pending. Product names and markings noted herein may also be covered by one or more United States, international or foreign trademarks.

This document is written in English but may be translated into multiple languages for reference. Only the English version of this document is the final and determinative format released by Diodes Incorporated.

LIFE SUPPORT

Diodes Incorporated products are specifically not authorized for use as critical components in life support devices or systems without the express written approval of the Chief Executive Officer of Diodes Incorporated. As used herein:

A. Life support devices or systems are devices or systems which:

1. are intended to implant into the body, or
2. support or sustain life and whose failure to perform when properly used in accordance with instructions for use provided in the labeling can be reasonably expected to result in significant injury to the user.

B. A critical component is any component in a life support device or system whose failure to perform can be reasonably expected to cause the failure of the life support device or to affect its safety or effectiveness.

Customers represent that they have all necessary expertise in the safety and regulatory ramifications of their life support devices or systems, and acknowledge and agree that they are solely responsible for all legal, regulatory and safety-related requirements concerning their products and any use of Diodes Incorporated products in such safety-critical, life support devices or systems, notwithstanding any devices- or systems-related information or support that may be provided by Diodes Incorporated. Further, Customers must fully indemnify Diodes Incorporated and its representatives against any damages arising out of the use of Diodes Incorporated products in such safety-critical, life support devices or systems.

Copyright © 2012, Diodes Incorporated

www.diodes.com