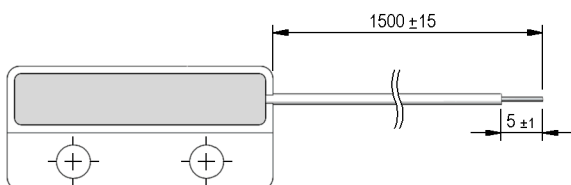


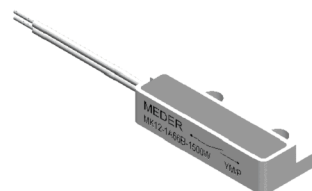
Dimensions mm[inch]

tolerances acc. to DIN ISO 2768-m
Toleranzen gem. DIN ISO 2768-m

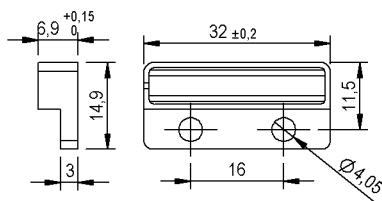


Isometric

Scale 1:1
Maßstab 1:1



Housing



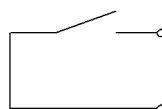
Cable

flat cable LIYZ 2x0,14 mm², white
Flachkabel LIYZ 2x0,14 mm², weiss

Terminals/Connector

Ends tinned
Enden verzinkt

Schematic



Marking

according to EN60062/factory code
gem. EN60062/Fertigungsstätte



Magnetic properties	Conditions	Min	Typ	Max	Unit
Pull-In	at 20°C	34		67	AT
Test equipment		KMS-31			

Contact data 66	Conditions	Min	Typ	Max	Unit
Contact rating	Any DC combination of V & A not to exceed their individual max.'s			10	W
Switching voltage (<21 AT)	DC or Peak AC			180	V
Switching current	DC or Peak AC			0,5	A
Carry current	DC or Peak AC			1,25	A

Special Product Data	Conditions	Min	Typ	Max	Unit
Contact - form		A - NO			
Sensor-resistance	measured with 40% overdrive			570	mOhm
Housing material		PBT glass fibre reinforced			
Case colour		white			
Sealing compound		Polyurethan			
Reach / RoHS conformity		yes			

Environmental data	Conditions	Min	Typ	Max	Unit
Shock	1/2 sine, duration 11ms, in 3 axis			50	g
Vibration	from 10 - 2000 Hz			20	g
Operating temperature	cable not moved	-30		70	°C
Operating temperature	cable moved	-5		70	°C
Storage temperature		-30		70	°C

Cable specification	Conditions	Min	Typ	Max	Unit
Cable type		PVC, flat cable			
Cross section		0.14 sq-mm			

General data	Conditions	Min	Typ	Max	Unit
Mounting advice		over 5m cable, a resistor is recommended.			
Mounting advice		Decreased switching distances by mounting on iron.			
Mounting advice		Magnetically conductive screws must not be used.			
Tightening torque	Screw M3 ISO 1207 Disk ISO 7089			0,5	Nm