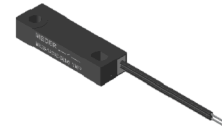
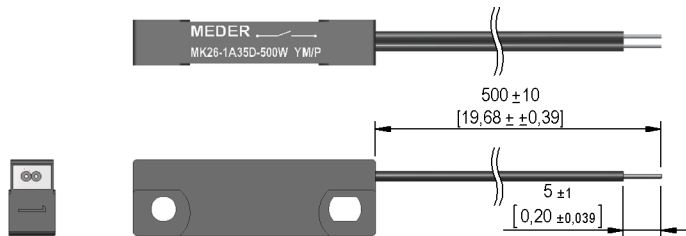


Dimensions mm[inch]

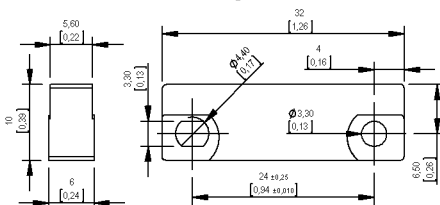
tolerances acc. to DIN ISO 2768-m
 Toleranzen gem. DIN ISO 2768-m

Isometric

Scale 1:2
 Maßstab 1:2



Housing



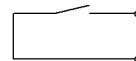
Cable

flat cable AWG26, black
 UL-Style 1430
 outer dimensions: 1.3x2.6 mm
 Flachbandkabel AWG26, schwarz
 UL-Style 1430
 Außenmasse 1,3x2,6 mm

Terminals/Connector

ends tinned
 Enden verzinkt

Schematic



Marking

according to EN60062/factory code
 gem. EN60062/Fertigungsstätte



Magnetic properties	Conditions	Min	Typ	Max	Unit
Pull-In	at 20°C	46		72	AT
Test equipment		KMS048-001			

Special Product Data	Conditions	Min	Typ	Max	Unit
Contact - No.		35			
Contact - form		A - NO			
Contact rating	Any DC combination of V & A not to exceed their individual max.'s			20	W
Switching voltage	DC or Peak AC			200	V
Carry current	DC or Peak AC			1,25	A
Switching current	DC or Peak AC			1	A
Sensor-resistance	measured with 40% overdrive			300	mOhm
Housing material		PBT GF30			
Case color		black			
Sealing compound		Polyurethan			

Environmental data	Conditions	Min	Typ	Max	Unit
Operating temperature		-5		80	°C
Storage temperature		-20		80	°C
Remark (RoHS)		Yes			

Data to reed-contact modifica	Conditions	Min	Typ	Max	Unit
Overall length cable	Tolerance according to drawing		500		mm

Cable specification	Conditions	Min	Typ	Max	Unit
Cable type		single wires			
Cable material		PVC			
Cross section		AWG 26			

General data	Conditions	Min	Typ	Max	Unit
Mounting advice		Magnetically conductive screws must not be used.			
Mounting advice		Decreased switching distances by mounting on iron.			
Mounting advice		over 5m cable, a resistor is recommended.			
Tightening torque	Screw M3 ISO 1207 Disk ISO 7089			0,5	Nm