

DO NOT
SCALE FROM
THIS PRINT

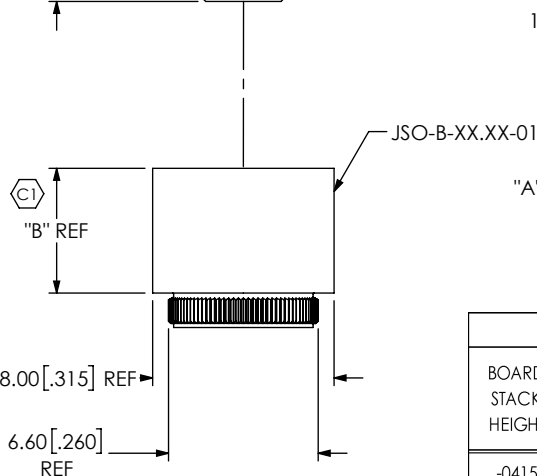
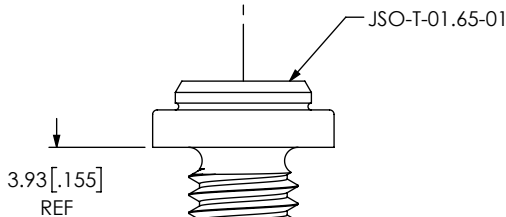
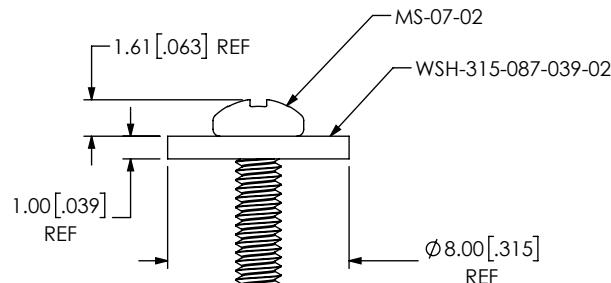


FIG 1
JSO-XXXX-01 SHOWN

DESIGNED & DIMENSIONED
IN MILLIMETERS[INCHES]

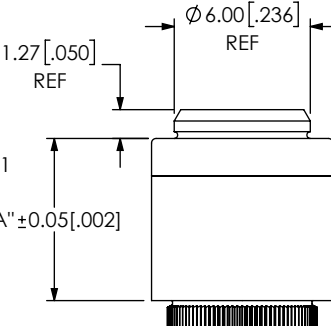
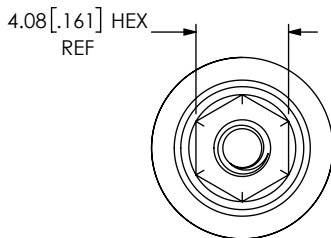
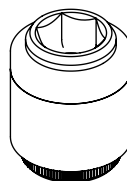


TABLE 1		
BOARD STACK HEIGHT	"A"	"B"
-0415	4.15 [0.163]	2.500
-0515	5.15 [0.203]	3.500
-0700	7.00 [0.276]	5.350
-0715	7.15 [0.281]	5.500
-0815	8.15 [0.321]	6.500
-1015	10.15 [0.400]	8.500
-1115	11.15 [0.439]	9.500
-1215	12.15 [0.478]	10.500
-1615	16.15 [0.636]	14.500
-1765	17.65 [0.695]	16.000
*-3500	35.00 [1.378]	33.350

*=NOT TOOLED

JSO-XXXX-XX-X

BOARD STACK HEIGHT

-0415,-0515,-0715,-0815,
-1015,-1115,-1215,
-1615,-1765,*-3500

LEAD STYLE

-01: PRESS-IN
(FOR STACK HEIGHTS -0415,-0515,
-0700,-0715,-0815,-1215,-1765 ONLY)

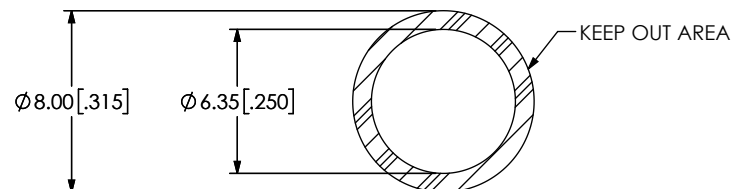
-03: THREADED
(FOR STACK HEIGHTS -0815,-1015,
-1115,-1215,-1615,*-3500 ONLY)
(SEE SHT 2, FIG 2)

*=NOT TOOLED

LOCKING OPTION

-L: LOCKING COMPOUND
(NOT AVAILABLE WITH -01
LEAD STYLE, REQUIRED FOR
-03 LEAD STYLE)

RECOMMENDED BOARD CUTOUT
(-01: PRESS-IN AND JACK SCREW)



† TABLE 2 - BOM					
FINISHED GOOD	STAND-OFF BASE	JACK SCREW	SCREW	NUT	WASHER
JSO-0415-01	JSO-B-02.50-01	JSO-T-01.65-01	MS-07-02	N/A	WSH-315-087-039-02
JSO-0515-01	JSO-B-03.50-01	JSO-T-01.65-01	MS-07-02	N/A	WSH-315-087-039-02
JSO-0700-01	JSO-B-05.35-01	JSO-T-01.65-01	MS-07-02	N/A	WSH-315-087-039-02
JSO-0715-01	JSO-B-05.50-01	JSO-T-01.65-01	MS-07-02	N/A	WSH-315-087-039-02
JSO-0815-01	JSO-B-06.50-01	JSO-T-01.65-01	MS-07-02	N/A	WSH-315-087-039-02
JSO-0815-03-L	JSO-B-06.50-03-L	JSO-T-01.65-01	MS-07-02	SN-03-02	WSH-315-087-039-02
JSO-1015-03-L	JSO-B-08.50-03-L	JSO-T-01.65-01	MS-07-02	SN-03-02	WSH-315-087-039-02
JSO-1115-03-L	JSO-B-09.50-03-L	JSO-T-01.65-01	MS-07-02	SN-03-02	WSH-315-087-039-02
JSO-1215-01	JSO-B-10.50-01	JSO-T-01.65-01	MS-07-02	N/A	WSH-315-087-039-02
JSO-1215-03-L	JSO-B-10.50-03-L	JSO-T-01.65-01	MS-07-02	SN-03-02	WSH-315-087-039-02
JSO-1615-03-L	JSO-B-14.50-03-L	JSO-T-01.65-01	MS-07-02	SN-03-02	WSH-315-087-039-02
JSO-1765-01	JSO-B-16.00-01	JSO-T-01.65-01	MS-07-02	N/A	WSH-315-087-039-02
*JSO-3500-03-L	*JSO-B-33.35-03-L	JSO-T-01.65-01	MS-07-02	SN-03-02	WSH-315-087-039-02

(*=NOT TOOLED)

† QTY = 1 FOR ALL COMPONENTS

NOTES:

1. (C1) REPRESENTS CRITICAL DIMENSION
2. STANDOFFS TO BE USED WITH 1.57[.062]MIN THICK BOARDS.
3. COMPONENTS ARE TO BE BULK PACKAGED IN SEPARATE BAGS AND SHOULD NOT LIST INDIVIDUAL COMPONENT QUANTITY ON THE LABEL. ALL COMPONENT BAGS ARE TO BE PACKAGED IN A LARGER BAG WITH THE FINAL PART NUMBER QUANTITY OF ASSEMBLIES ON THE LABEL.
4. STANDOFFS ARE DESIGNED 0.15MM LONGER THAN CONNECTOR STACK HEIGHTS TO ALLOW FOR PROCESSING VARIABLES.
5. TORQUE TO 2.5 - 3.5 IN*LB'S TO SECURE FASTENER IN A STATIC ENVIRONMENT ASSUMING RECOMMENDED BOARD TO BOARD DISTANCES ARE ACHIEVED WITHOUT DAMAGE TO THE PCB, HARDWARE OR OTHER COMPONENTS.

PATENT PENDING

UNLESS OTHERWISE SPECIFIED,
DIMENSIONS ARE IN MILLIMETERS.
TOLERANCES ARE:

DECIMALS ANGLES
X.X: ±0.3 [.01]
X.XX: ±0.13 [.005]
X.XXX: ±0.051 [.0020]

PROPRIETARY NOTE
THIS DOCUMENT CONTAINS CONFIDENTIAL AND
PROPRIETARY INFORMATION AND ALL DESIGN,
MANUFACTURING, REPRODUCTION, USE, PATENT RIGHTS
AND SALES RIGHTS ARE EXPRESSLY RESERVED BY SAMTEC,
INC. THIS DOCUMENT SHALL NOT BE DISCLOSED, IN WHOLE
OR PART, TO ANY UNAUTHORIZED PERSON OR ENTITY NOR
REPRODUCED, TRANSFERRED OR INCORPORATED IN ANY
OTHER PROJECT IN ANY MANNER WITHOUT THE EXPRESS
WRITTEN CONSENT OF SAMTEC, INC.

MATERIAL: DO NOT SCALE DRAWING

STAINLESS STEEL
LOCKING COMPOUND

SHEET SCALE: 3:1

DESCRIPTION:

JACK SCREW STAND-OFF

DWG. NO.

samtec

520 PARK EAST BLVD, NEW ALBANY, IN 47150
PHONE: 812-944-6733 FAX: 812-948-5047
e-Mail: info@SAMTEC.com code 55322

JSO-XXXX-XX-X

BY: KYLE B

2/4/2014

SHEET 1 OF 2

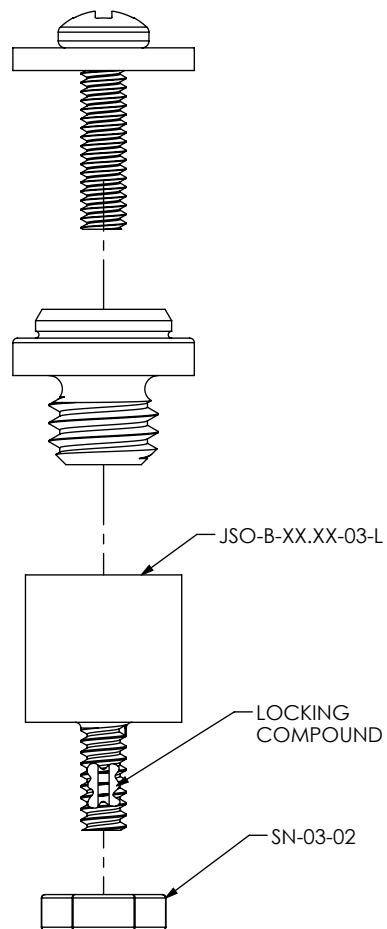
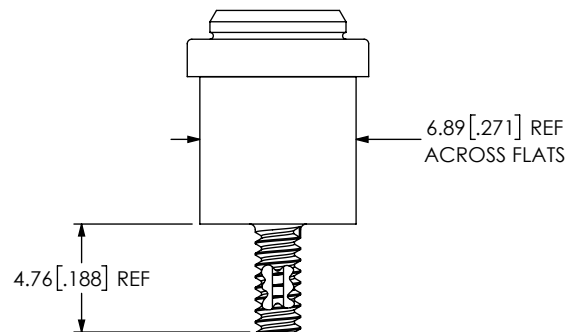
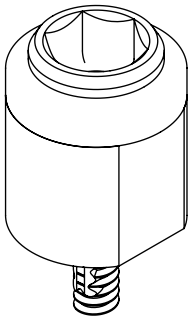
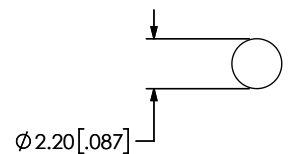


FIG 2
JSO-XXXX-03-L
(SAME AS FIG 1, EXCEPT AS SHOWN)

CRITICAL DIMENSION INSPECTION INSTRUCTION TABLE	
ASSEMBLY OPERATION	IN-PROCESS INSPECTION
RECEIVE	C1



RECOMMENDED BOARD CUTOUT
(-03: THREADED)



* PROPRIETARY NOTE *
THIS DOCUMENT CONTAINS CONFIDENTIAL AND PROPRIETARY INFORMATION AND ALL DESIGN, MANUFACTURING, REPRODUCTION, USE, PATENT RIGHTS AND SALES RIGHTS ARE EXPRESSLY RESERVED BY SAMTEC, INC. THIS DOCUMENT SHALL NOT BE DISCLOSED, IN WHOLE OR PART, TO ANY UNAUTHORIZED PERSON OR ENTITY NOR REPRODUCED, TRANSFERRED OR INCORPORATED IN ANY OTHER PROJECT IN ANY MANNER WITHOUT THE EXPRESS WRITTEN CONSENT OF SAMTEC, INC.

DO NOT SCALE DRAWING

SHEET SCALE: 3:1

samtec

520 PARK EAST BLVD, NEW ALBANY, IN 47150
PHONE: 812-944-6733 FAX: 812-948-5047
e-Mail info@SAMTEC.com code 55322

DESCRIPTION: JACK SCREW STAND-OFF

DWG. NO. JSO-XXXX-XX-X

BY: KYLE B 2/4/2014 SHEET 2 OF 2