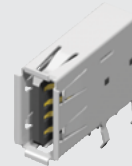
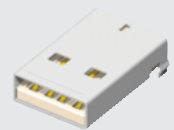


USB-A-D-S-B-TH

USB-A-S-F-O-TH



USB-AM-S-F-W-TH



USB-A-S-F-B-VU

USB-A, USBR-A, USB-AM SERIES

STANDARD & RUGGED USB 2.0

SPECIFICATIONS

For complete specifications and recommended PCB layouts see www.samtec.com?USB-A, www.samtec.com?USBR-A or www.samtec.com?USB-AM

Insulator Material:

High Temperature Thermoplastic

Contact Material:

Phosphor Bronze

Plating:

Gold on Contacts, Nickel on Shell, Tin on Tails

Operating Temp Range:

-50°C to +85°C

Voltage Rating:

30 VAC

Contact Resistance:

30 mΩ

Cycles:

1500 (max tested)

Packaging:

Packaged and shipped in Bulk Packaging Trays; Trays suitable for automation available

RoHS Compliant:

Yes

Lead-Free Solderable

-TH & -VU=Yes

(Wave Solder only)

TID Numbers (USB-A):

USB-A-D-X-X-TH (61001199)

USB-A-S-X-X-TH (61001180)

USB-A-S-X-X-SM2 (61001152)

TID Number (USB-AM):

USB-AM-S-X-X-SM (61001154)

RECOGNITIONS

For complete scope of recognitions see www.samtec.com/quality



FILE NO. E111594

TYPE	A	SHELL TYPE	PLATING	COLOR	TERMINATION
USB = Standard Connector		-S = Single -D = Double (-TH option only)	-F = Gold Flash on Mating Area, Tin on Tails -S = 30µ" (0.76 µm) Gold on Mating Area, Tin on Tails	-B = Black (USB only) -W = White (USB only) -O = Orange (USBR only)	-TH = Through-hole -SM2 = Surface Mount (USB only) -VU = Upright, Through-Hole

USB	TYPE	SHELL TYPE	PLATING	COLOR	TERMINATION
-AM = A Type (Plug)		-S = Single	-F = Gold Flash on Mating Area, Tin on Tails -S = 30µ" (0.76 µm) Gold on Mating Area, Tin on Tails	-B = Black -W = White	-TH = Through-hole -SM1 = Surface Mount