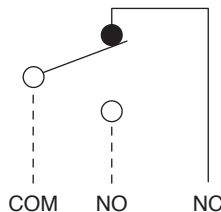
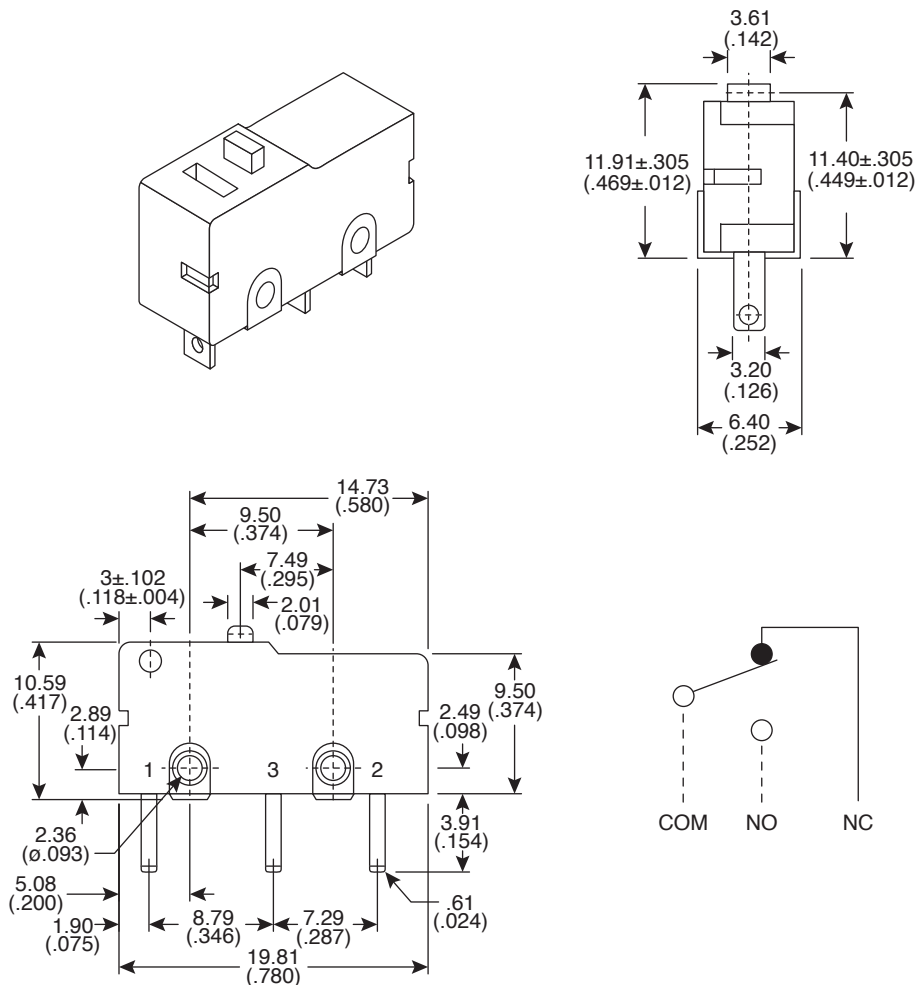


## Dimensions: mm (In.)

**Electrical Specifications:**

- Rating: 5A/125VAC
- Insulation resistance: 100MΩ min. @ 500VDC
- Dielectric strength: 500VAC for 1 minute
- Contact resistance: <50mΩ
- Life cycling (full load): 200,000 cycles

**Mechanical Specifications:**

- Switching timing: non-shorting
- Operating Temperature: -25°~+80°C
- Ambient humidity used: <85% RH
- Operating force: 115±10g
- Life cycling (no load): 1,000,000 cycles

**Materials:**

- Housing, button: 30% glass fiber reinforced PBT, black
- Switch lever: stainless steel
- Switch terminals: brass
- Spring: steel
- Contacts: silver
- Metal contact: phosphor bronze

**Note:**

- RoHS Compliant

### Miniature Snap Switch

101-1200-EV

# Mountain Switch

# Mouser Electronics

Authorized Distributor

Click to View Pricing, Inventory, Delivery & Lifecycle Information:

[Mountain Switch:](#)

[101-1200-EV](#)