

1XE314

CATALOG LISTING

PAGE 1 OF 1

REPLACES

PR-21966

RELEASE NO.

M

ISSUE
3

CHECK

REVISIONS

A PR-1
21966
JJA
20 DEC 95

CHECK

CHECK

CHECK

CHECK

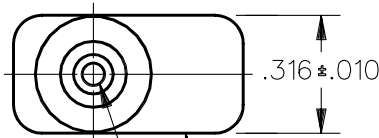
CHECK

DDM/CAD

DRAWN

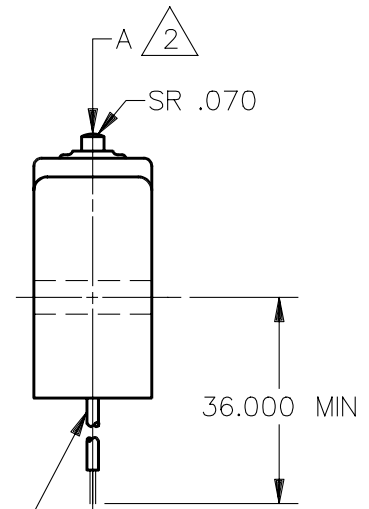
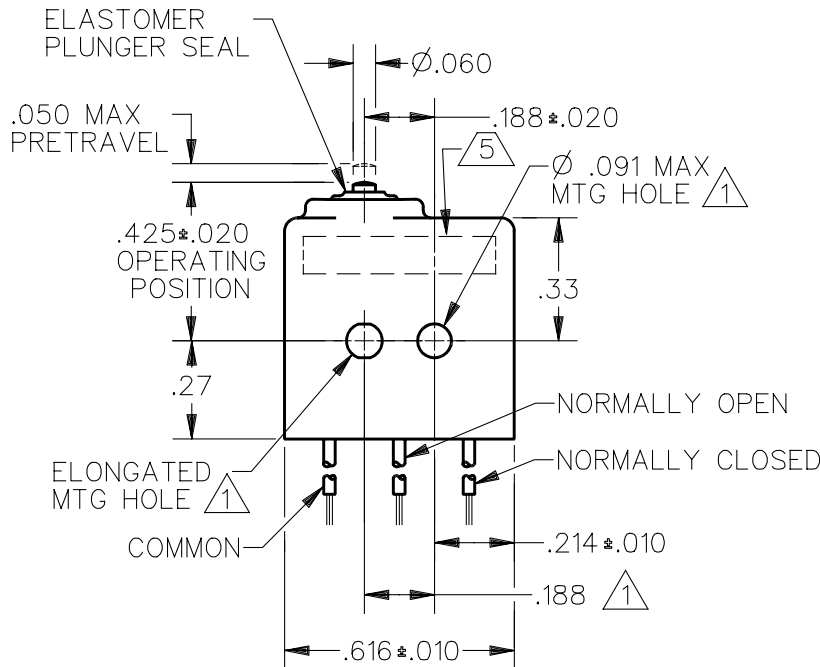
JJA

20 DEC 95



CORROSION RESISTANT TREATED
METAL ENCLOSURE

CORROSION RESISTANT
STEEL PLUNGER



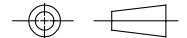
3X NO. 26 WIRE LEAD PER
MIL-W-22759/11 EMBEDDED
IN EPOXY CASTING RESIN

NOTES

- 1 MOUNTING HOLES WILL ACCEPT $\varnothing .087$ MAX PINS OR SCREWS ON $.188 \pm .002$ CENTERS
- 2 ACTUATION IN LINE WITH ARROW "A" IS RECOMMENDED
- 3 WEIGHT OF SWITCH ONLY IS .16 OZ MAX. WEIGHT OF SWITCH WITH WIRE LEADS IS .55 OZ MAX
- 4 CONTACT MATERIAL: 24K SOLID GOLD
- 5 YELLOW MARKING IS ON BOTH SIDES OF HOUSING TO IDENTIFY THAT THIS UNIT HAS GOLD CONTACTS
- 6 SWITCH CONFORMS TO MS-27994-5 EXCEPT FOR WIRE LEADS

THIS DRAWING COVERS A PROPRIETARY ITEM AND IS THE PROPERTY OF MICRO SWITCH, A DIVISION OF HONEYWELL. THIS DRAWING IS NOT TO BE COPIED OR USED WITHOUT THE APPROVAL OF MICRO SWITCH.

THIRD ANGLE PROJECTION



CHARACTERISTICS		ELECTRICAL DATA		SCALE 2:1	DO NOT SCALE PRINT
OPERATING FORCE — — — — 5-17 OZ		CONTACT ARRANGEMENT		UNLESS OTHERWISE SPECIFIED TOLERANCES ARE	
RELEASE FORCE — — — — 4 OZ MIN		S P D T			
RELEASE TRAVEL — — — — .004 MIN		28 VOLTS DC RATING			
DIFFERENTIAL TRAVEL — — — .005 MAX		INDUCTIVE — — — SEA LEVEL — — — 1/2 AMP			
OVERTRAVEL — — — — — .004 MIN		RESISTIVE — — — SEA LEVEL — — — 1 AMP			
		50,000 FT — — — 1/2 AMP		ONE PLACE (.0)	± .030
		50,000 FT — — — 1 AMP		TWO PLACE (.00)	± .015
				THREE PLACE (.000)	± .005
				ANGLES	±
				WEIGHT	<div><div>3</div></div>

Mouser Electronics

Authorized Distributor

Click to View Pricing, Inventory, Delivery & Lifecycle Information:

[Honeywell:](#)

[1XE314](#)