

DCH3320 Series

Regulated/Remote Adjustable 0-10kV DC-DC HV Power Supply

DESCRIPTION

The DCH3320 series of adjustable DC-DC power supply is designed for demanding laboratory and OEM applications. The power supplies feature 0-10kV output voltage adjustment, 1000:1 voltage sense, and 1V/mA current sense. The modules are capable of 20 watts output power. The high voltage section of the power supply is encapsulated in epoxy resin for protection against humidity and environment.



FEATURES

- 24 VDC Input
- Output 0-10kV Adjustable
- Remote Adjust 0-5V (5V Reference provided)
- Output Current 0-2mA
- 20 Watts Output
- >70% Efficiency
- Current Sense Output.
- Fold-back Current Limiting
- 1000:1 Voltage Sense Output
- Short-Circuit Protected
- Base-plate Mounting
- Resonant Switchmode Topology
- Aluminum Enclosure
- Low Ripple, Typically $\leq 1\%$

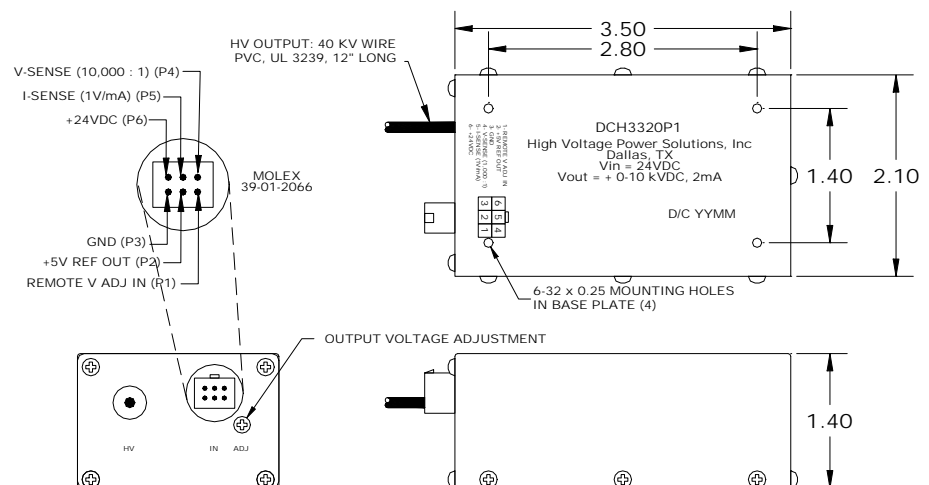
APPLICATIONS

- Photomultipliers
- Ionizers
- CRT Grid Circuits
- Biasing
- Dielectric Testing
- Piezoelectric Drivers
- Electrostatic Chucks
- Sealing Applications
- Ink Jet Printers
- Photo Detectors

MECHANICAL

- Dimensions 5.0" x 3.0" x 2.0"
- Molex 03-06-2062 Connector
- Weight: 18.0 Ounces
- Operating Temperature Range: -40°C to $+70^{\circ}\text{C}$

MODEL	OUTPUT POLARITY	VOLTAGE RANGE	OUTPUT CURRENT
DCH3320N1	Negative	0-10kV	2mA
DCH3320P1	Positive	0-10kV	2mA



GENERAL INFORMATION

Custom requirements are welcome. Modifications to existing products and completely new designs are a standard part of our business. Our extensive design inventory and the use of our CAD/CAM design and manufacture allows for prompt and cost competitive quotations as well as reliable prototyping capabilities. Please feel free to contact us to discuss your custom requirements.