

4

3

2

1

THIS DRAWING IS UNPUBLISHED.

RELEASED FOR PUBLICATION

© COPYRIGHT

ALL RIGHTS RESERVED.

LOC

DIST


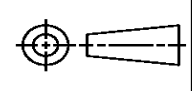
REVISIONS

P	LTR	DESCRIPTION	DATE	DWN	APVD
	H6	ECR-13-019320	24DEC2013	RS	LZ

REPLACED BY OCEAN STYLE APPLICATOR PART
NUMBER 2151139-1

FOR REPLACEMENT PARTS FOR APPLICATOR 1238041
REFER TO ADDITIONAL PAGE(S). SPARE PARTS KIT (IF LISTED)
WILL REMAIN AVAILABLE.

THE REPLACEMENT OCEAN STYLE APPLICATOR HAS THE
SAME TERMINATOR/PRESS INTERFACE AS APPLICATOR
1238041

THIS DRAWING IS A CONTROLLED DOCUMENT.		DWN R.SHEN		 TE Connectivity			
DIMENSIONS:		CHK LJ.ZHANG					
		APVD U.GUO		NAME SIDE FEED HD-I APPLICATOR			
		PRODUCT SPEC					
		APPLICATION SPEC					
MATERIAL		WEIGHT		SIZE A 3	CAGE CODE	DRAWING NO C- 1238041	RESTRICTED TO
FINISH		CUSTOMER ACCESSIBLE PRODUCTION DRAWING		SCALE		SHEET 1 OF 2	REV H6

THIS DRAWING IS UNPUBLISHED.		RELEASED FOR PUBLICATION		
© COPYRIGHT -		BY TYCO ELECTRONICS CORPORATION. ALL RIGHTS RESERVED.		
PART NUMBER	REV	FIRST USED	TERMINATOR	FEED TYPE
1238041-1	H	-	LEADMAKER	MECH POST FEE
1238041-2	H	-	BENCH	MECH PRE FEE
1238041-6	H	-	LEADMAKER	MECH POST FEE
7-1238041-1	H	-	LEADMAKER	MECH POST FEE
7-1238041-2	H	-	BENCH	MECH PRE FEE
7-1238041-6	H	-	LEADMAKER	MECH POST FEE
7-1238041-7	C	-	-	-
CRIMP DATA (AMP TERMINAL)				
TERMINAL NAME: SOCKET, PIN				
CRIMP	SIZE	TYPE	RANGE	
WIRE	2.03 [.080 IN]	F	0.5 - 1 mm ²	
INSUL	4.06 [.160 IN]	0	10	
WIRE STRIP LENGTH		APPL INSTRUCTION		
4.5±0.3mm		408-8322		
TERMINAL	114-18040 B	-		FEED
APPL SPEC	114-18020 A	-		
TERMINALS APPLIED				
TERMINAL	TERMINAL	SEAL	APPL SPEC	-
SOCKET	SOCKET	-	-	-
929989	1418497	828904	B	-
929974	-	828920	A	-
PIN	PIN	-	-	-
929967	-	828920	A	-
929983	-	828904	B	-
1703013	1703049	828904	B	-
WIRE SIZE		CRIMP HEIGHT		PIN PN & LENGTH [IN]
mm ² AWG				
1 mm ²		1.45 ±0.05 [.057 ±.002 IN]		354779-6 [.3020]
0.75 mm ² OR 18 AWG		1.36 ±0.05 [.054 ±.002 IN]		1-354779-2 [.3050]
0.5 mm ²		1.27 ±0.05 [.050 ±.002 IN]		2-354779-1 [.3095]
-		-		-
-		-		-
-		-		-
-		-		-
-		-		-
-		-		-
-		-		-
-		-		-
-		-		-
-		-		-
-		-		-
-		-		-
SET UP GAGE	LAYOUT			
458637-3	L2374			

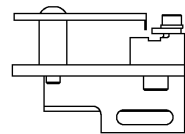
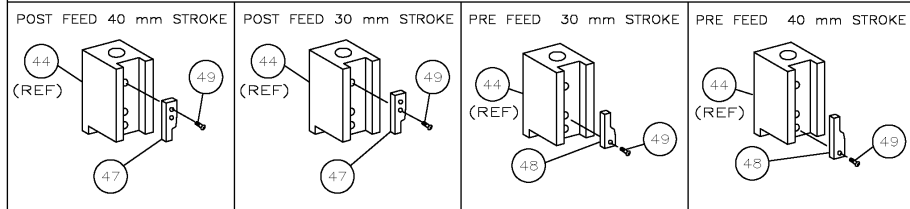
- RECOMMENDED SPARE PARTS.
2. GREASE RAM, CAM, CAM FOLLOWER AND FEED ROD LIGHTLY.
3. LUBRICATE DAILY PER THE APPLICATOR INSTRUCTION SHEET SUPPLIED WITH THE APPLICATOR.
- THIS APPLICATOR APPLIES TERMINAL WITH A SEAL.
- APPLY TORQ-SEAL IN ALLEN SOCKET TO FILL HOLE AFTER FLAT HD HAS BEEN ADJUSTED TO CORRECT HEIGHT AT QUALIFICATION. APPLY #1-23419-5 LOC-TITE TO THREADS.
- CUT SCREW TO LENGTH AT ASSY

FEED 14.5(.571 IN)(929974,929967), 12.5(.492 IN)(929989,929983)

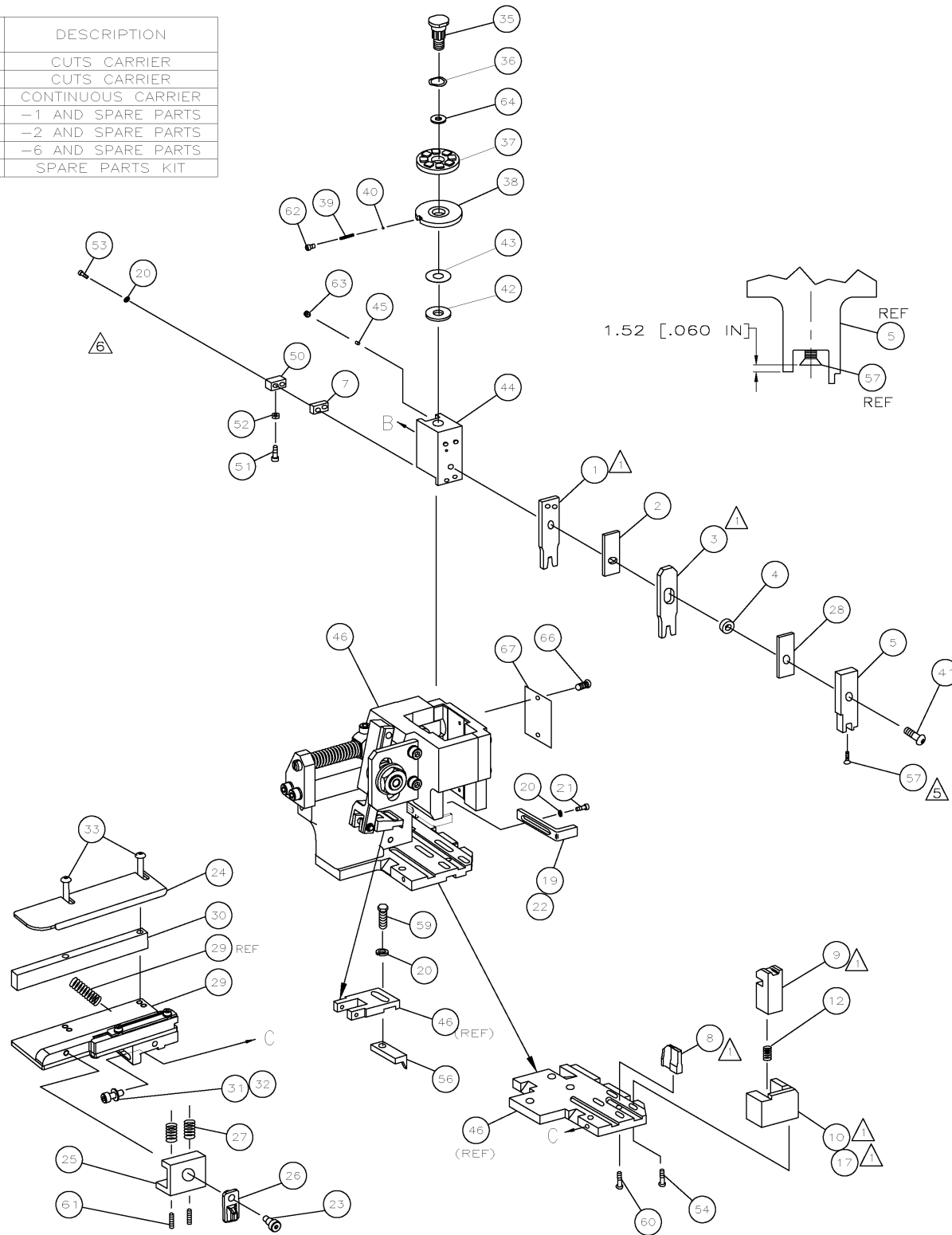
SEAL NO.
828920
828904

INS. RANGE
1.2 - 2.0mm [.047 - .083 IN]
1.2 - 2.0mm [.047 - .083 IN]

VIEW B ROTATED 180°



GUIDE OFF
INSULATION BARREL



-	1	1	1	1	1	1	1238041	PRINT, APPLICATOR LOG SHEET	73
-	1	1	1	1	1	1	1338705-1	DOCUMENTATION PACKAGE	72
-	1	1	1	1	1	1			71
-	1	1	1	1	1	1			70
-	1	1	1	1	1	1			69
-	1	1	1	1	1	1			68
-	1	1	1	1	1	1	461264-1	PLATE, IDENTIFICATION	67
-	2	2	2	2	2	2	21017-2	SCR,DRIVE(#2x.19)ID PLATE	66
-	1	1	1	1	1	1			65
-	1	1	1	1	1	1	986950-1	WASHER, FLAT PRECISION	64
-	1	1	1	1	1	1	3-18031-0	SCR,SKT SET(M6x6 LW)RAM	63
-	1	1	1	1	1	1	18023-9	SCR,SHC(M4x6)INS DISC	62
-	2	2	2	2	2	2	2-18032-5	SCR,SET(M5X20)DRAG	61
-	1	1	1	1	1	1	18024-7	SCR,BHC(M4X10)ANVIL	60
-	1	1	1	1	1	1	5-18022-2	SCR,HEX(M4X8)FEED FINGER	59
-	1	1	1	1	1	1			58
-	1	1	1	1	1	1	985575-3	SCR,FHC(M3X10)DEP	57
-	1	1	1	1	1	1	1338685-1	PAWL, FEED	56
-	1	1	1	1	1	1			55
-	2	2	2	2	2	2	18024-8	SCR,BHC(M4x12)SHEAR HOLDER	54
-	2	2	2	2	2	2	1-18023-2	SCR,SHC(M4x53)TERM HDWN	53
-	1	1	1	1	1	1	18030-1	NUT,HEX(M3)HOLD DOWN	52
-	1	1	1	1	1	1	811242-5	BUMPER, HOLDDOWN	51
-	1	1	1	1	1	1	690753-2	SPACER, TONKER	50
-	1	1	1	1	1	1	18024-3	SCR,BHC(M3X10)CAM	49
-	-	-	-	-	-	-	1338675-1	CAM, PRE FEED 30 & 40 mm ST	48
-	-	-	-	-	-	-	1338676-1	CAM, POST FEED 30 & 40 mm ST	47
-	1	1	1	1	1	1	1320999-3	APPLICATOR BASIC SUBASSY	46
-	1	1	1	1	1	1	690191-1	PLUG, NYLON	45
-	1	1	1	1	1	1	1338660-1	RAM	44
-	1	1	1	1	1	1	690125-1	WASHER, LAMINATED	43
-	1	1	1	1	1	1	690124-1	WASHER, RAM	42
-	1	1	1	1	1	1	2-18024-6	SCR,BHC(M8X25)RAM	41
-	1	1	1	1	1	1	23241-1	BALL, STEEL	40
-	1	1	1	1	1	1	2-22278-7	SPRING, COMPRESSION	39
-	1	1	1	1	1	1	1320922-1	DISC, INSULATION	38
-	1	1	1	1	1	1	354777-1	WIRE DISC, PLASTIC	37
-	1	1	1	1	1	1	22480-5	WASHER, SPRING	36
-	1	1	1	1	1	1	690212-1	POST, RAM	35
-	2	2	2	2	2	2	1-18024-0	SCR,BHC(M4X20)STRIP GUIDE	34
-	1	1	1	1	1	1	18027-2	WASHER, FLAT(M4)	33
-	1	1	1	1	1	1	1-18023-2	SCR,SKT CAP(M4X12)MOUNT BLOCK	32
-	1	1	1	1	1	1	1320908-2	SPACER, STRIP GUIDE	31
-	1	1	1	1	1	1	1633073-1	STRIP GUIDE PLATE ASSY	30
-	1	1	1	1	1	1	1-455888-9	SPACER, FRONT SHEAR DEP	29
-	2	2	2	2	2	2	1-22284-0	SPRING, DRAG	28
-	1	1	1	1	1	1	356835-1	LEVER, DRAG RELEASE	27
-	1	1	1	1	1	1	240792-1	DRAG, TERMINAL	26
-	1	1	1	1	1	1	1320928-1	GUIDE, STRIP (REAR)	25
-	1	1	1	1	1	1	980371-4	SCR,SHC SHLD	24
-	1	-	1	1	-	1	690472-2	STRIPPER	23
-	1	1	1	1	1	1	1-18023-1	SCR,SHC(M4X10)STRIPPER	22
-	4	4	4	4	4	4	18025-2	WASHER,LOCK(M4)STRIPPER	21
-	-	1	-	-	1	-	690472-1	STRIPPER	20
-	1	-	-	1	-	-	1338684-2	HOLDER, SHEAR, FRONT (NO-CUT)	19
-	-	-	-	-	-	-			18
-	-	-	-	-	-	-			17
-	-	-	-	-	-	-			16
-	-	-	-	-	-	-			15
-	-	-	-	-	-	-			14
-	1	1	1	1	1	1	3-22280-3	SPRING, SHEAR	13
-	1	1	1	1	1	1	356885-5	STOP, SHEAR	12
-	-	1	1	-	1	1	1-1320921-0	HOLDER, SHEAR, FRONT (CUT)	11
-	1	1	1	1	1	1	318707-1	SHEAR, FLOAT (FRONT)	10
1	2	2	2	1	1	1	1338693-1	ANVIL	9
-	1	1	1	1	1	1	3-240641-8	SPACER, DEPRESSOR (REAR)	8
-	1	1	1	1	1	1			7
-	1	1	1	1	1	1	1338680-1	DEPRESSOR, SHEAR (FRONT)	6
-	1	1	1	1	1	1	3-238011-3	SPACER, BLOCK CRIMPER	5
1	2	2	2	1	1	1	8-683454-9	CRIMPER, INSULATION	4
-	1	1	1	1	1	1	1-455888-1	SPACER, CRIMPER	3
1	2	2	2	1	1	1	1-456405-6	CRIMPER, WIRE	2
-77	-76	-72	-71	-6	-2	-1	PART NO	DESCRIPTION	ITEM NO

THIS DRAWING IS A CONTROLLED DOCUMENT.		DATE	BY	APP'D	DATE	BY	APP'D
DIMENSIONS:		INCHES	0.001	0.001	0.001	0.001	0.001
TOLERANCES, UNLESS OTHERWISE SPECIFIED:		0.001	0.001	0.001	0.001	0.001	0.001
MATERIAL		FINISH	0.001	0.001	0.001	0.001	0.001
WEIGHT		0.001	0.001	0.001	0.001	0.001	0.001
CUSTOMER DRAWING		0.001	0.001	0.001	0.001	0.001	0.001
SCALE		0.001	0.001	0.001	0.001	0.001	0.001
SHEET		0.001	0.001	0.001	0.001	0.001	0.001
OF		0.001	0.001	0.001	0.001	0.001	0.001
REV		0.001	0.001	0.001	0.001	0.001	0.001
H5		0.001	0.001	0.001	0.001	0.001	0.001