

SMD Power Inductor

CDRH105R



Description

- Ferrite drum core construction.
- Magnetically shielded.
- L×W×H: 10.5×10.3×5.1mm Max.
- Product weight: 1.8g(Ref.)
- Moisture Sensitivity Level: 1
- RoHS compliance.

Environmental Data

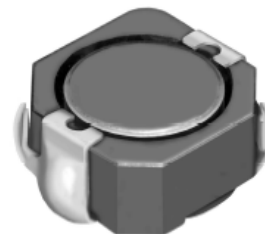
- Operating temperature range: -40°C~+100°C
(including coil's self temperature rise)
- Storage temperature range: -40°C~+100°C
- Solder reflow temperature: 260 °C peak.

Packaging

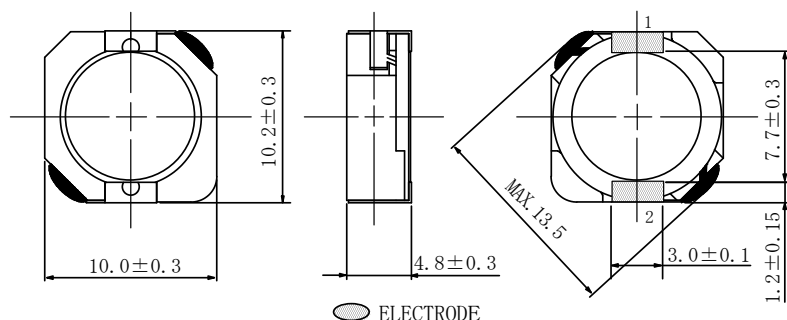
- Carrier tape and reel packaging.
- 12.9" diameter reel.
- 500pcs per reel.

Applications

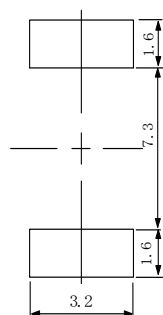
- Ideally used in Notebook PC, LCD TV, DVD, Game machine, STB, Projector etc as DC-DC converter inductors.



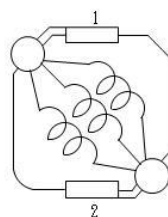
Dimension - [mm]



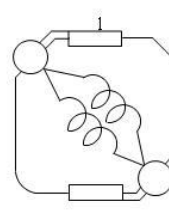
Land patterns - [mm]



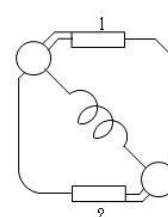
Schematics



(0.8μH~22μH)



(27μH~82μH)



(100μH~1.0mH)

Note: This specification is subject to change without notice. Please contact your nearest sales office for updated information when placing an order.

SMD Power Inductor

CDRH105R



Electrical Characteristics

Part Name	Inductance (μ H) [within] ※ 1	D.C.R. (m Ω) Max. (Typ.) (at 20°C)	Saturation Current(Typ.) (A)※ 2	Temperature Rise Current (A) ※ 3
CDRH105RNP-0R8NC	0.8 \pm 30%	4.3 (3.3)	17.0	10.5
CDRH105RNP-1R5NC	1.5 \pm 30%	5.8 (4.5)	13.0	9.80
CDRH105RNP-2R2NC	2.2 \pm 30%	7.2 (5.6)	12.0	8.80
CDRH105RNP-3R3NC	3.3 \pm 30%	10.4 (8.0)	9.30	7.80
CDRH105RNP-4R7NC	4.7 \pm 30%	12.3 (9.5)	7.25	7.10
CDRH105RNP-6R8NC	6.8 \pm 30%	18.0 (14.0)	6.28	6.20
CDRH105RNP-8R2NC	8.2 \pm 30%	20.0 (16.0)	5.90	5.80
CDRH105RNP-100NC	10 \pm 30%	26.0 (20.0)	5.35	5.00
CDRH105RNP-120NC	12 \pm 30%	33.0 (25.0)	4.50	4.40
CDRH105RNP-150NC	15 \pm 30%	41.0 (32.0)	4.15	3.90
CDRH105RNP-180NC	18 \pm 30%	46.0 (35.0)	3.85	3.70
CDRH105RNP-220NC	22 \pm 30%	61.0 (47.0)	3.60	3.30
CDRH105RNP-270NC	27 \pm 30%	69.0 (53.0)	3.25	3.20
CDRH105RNP-330NC	33 \pm 30%	84.0 (65.0)	2.95	2.75
CDRH105RNP-390NC	39 \pm 30%	106 (82.0)	2.73	2.65
CDRH105RNP-470NC	47 \pm 30%	130 (100)	2.38	2.30
CDRH105RNP-560NC	56 \pm 30%	149 (115)	2.33	2.15
CDRH105RNP-680NC	68 \pm 30%	201 (155)	1.90	1.75
CDRH105RNP-820NC	82 \pm 30%	227 (175)	1.75	1.68
CDRH105RNP-101NC	100 \pm 30%	253 (195)	1.61	1.52
CDRH105RNP-121NC	120 \pm 30%	303 (233)	1.53	1.43
CDRH105RNP-151NC	150 \pm 30%	370 (285)	1.39	1.23
CDRH105RNP-181NC	180 \pm 30%	419 (322)	1.24	1.17
CDRH105RNP-221NC	220 \pm 30%	500 (385)	1.17	1.08
CDRH105RNP-271NC	270 \pm 30%	672 (512)	0.97	0.92
CDRH105RNP-331NC	330 \pm 30%	812 (625)	0.89	0.85
CDRH105RNP-391NC	390 \pm 30%	953 (733)	0.81	0.80
CDRH105RNP-471NC	470 \pm 30%	1289 (992)	0.77	0.65
CDRH105RNP-561NC	560 \pm 30%	1430 (1100)	0.71	0.62
CDRH105RNP-681NC	680 \pm 30%	1599 (1230)	0.64	0.60
CDRH105RNP-821NC	820 \pm 30%	1768 (1360)	0.59	0.57
CDRH105RNP-102NC	1000 \pm 30%	1989 (1530)	0.56	0.52

※1 Inductance measuring condition: at 100kHz.

※2 The saturation current: This indicates the value of DC current when the inductance decreases to 65% of it's nominal.

※3 The temperature rise: The value of DC current when the temperature rise is $\Delta T=40^{\circ}\text{C}$ ($T_a=20^{\circ}\text{C}$).

Note: This specification is subject to change without notice. Please contact your nearest sales office for updated information when placing an order.

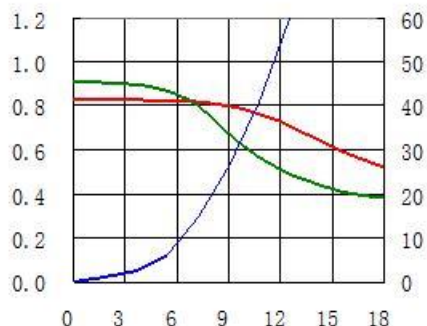
SMD Power Inductor

CDRH105R

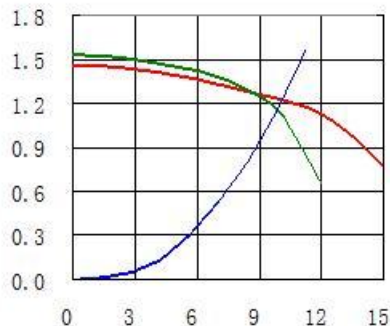


Saturation Current & Temperature Rise Graph — L (20°C) — L (100°C) — ΔT

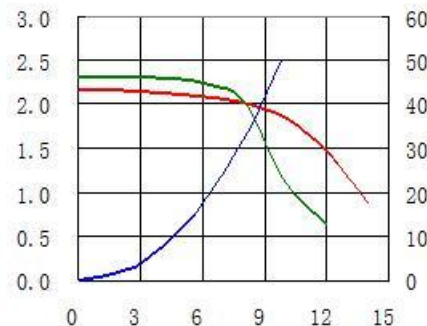
1. CDRH105RNP-0R8NC



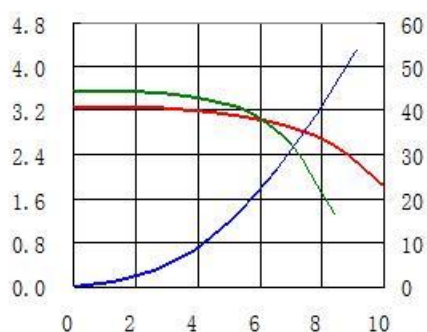
2. CDRH105RNP-1R5NC



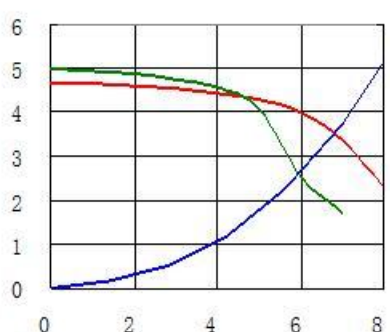
3. CDRH105RNP-2R2NC



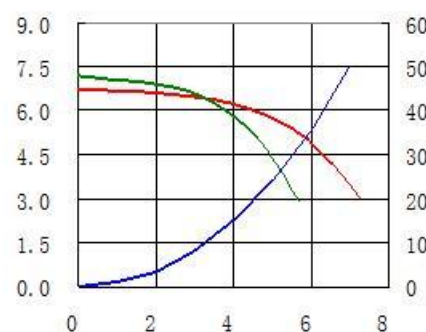
4. CDRH105RNP-3R3NC



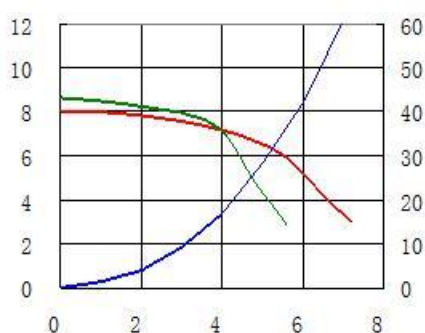
5. CDRH105RNP-4R7NC



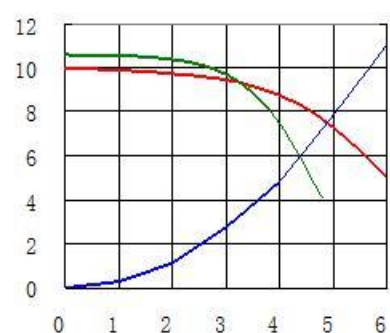
6. CDRH105RNP-6R8NC



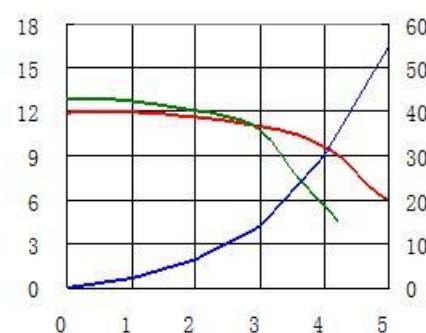
7. CDRH105RNP-8R2NC



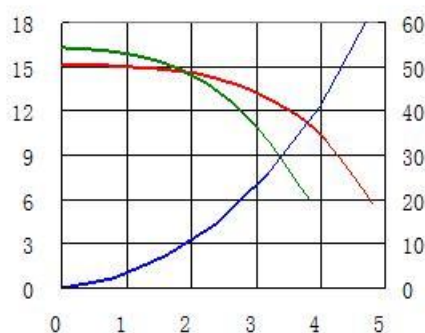
8. CDRH105RNP-100NC



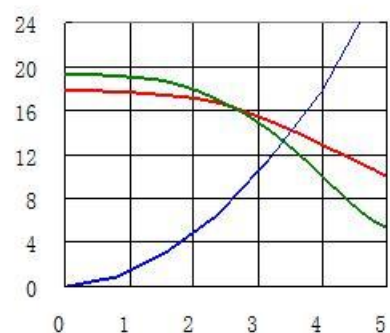
9. CDRH105RNP-120NC



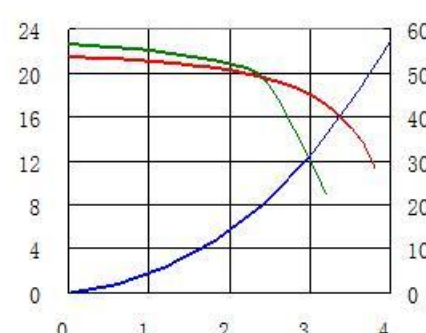
10. CDRH105RNP-150NC



11. CDRH105RNP-180NC



12. CDRH105RNP-220NC



Note: This specification is subject to change without notice. Please contact your nearest sales office for updated information when placing an order.

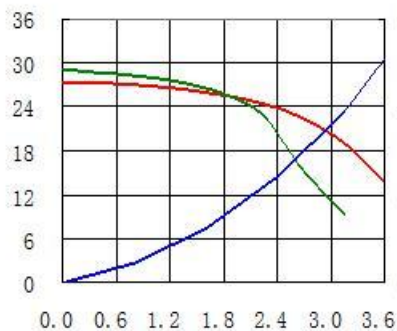
SMD Power Inductor

CDRH105R

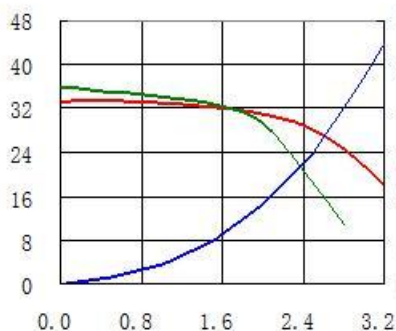


Saturation Current & Temperature Rise Graph — L (20°C) — L (100°C) — ΔT

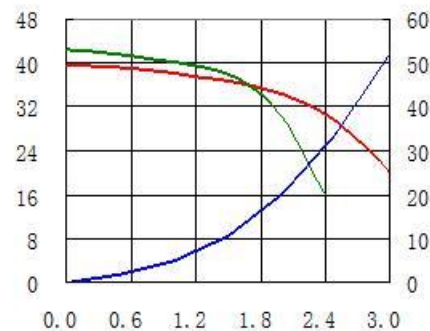
13. CDRH105RNP-270NC



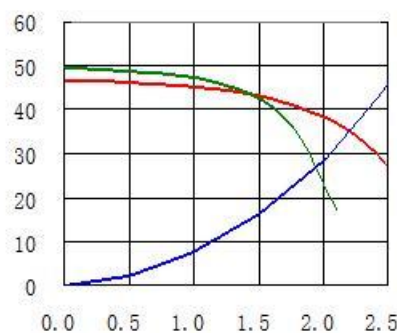
14. CDRH105RNP-330NC



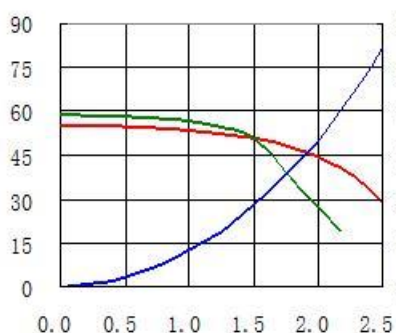
15. CDRH105RNP-390NC



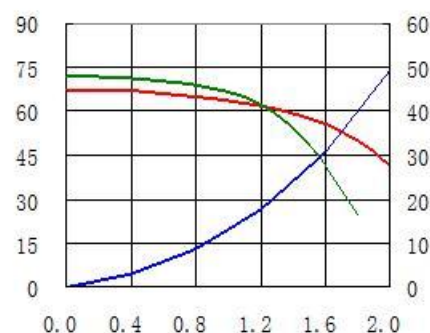
16. CDRH105RNP-470NC



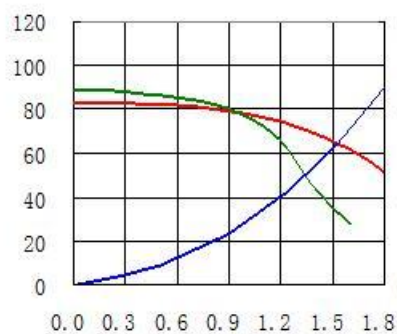
17. CDRH105RNP-560NC



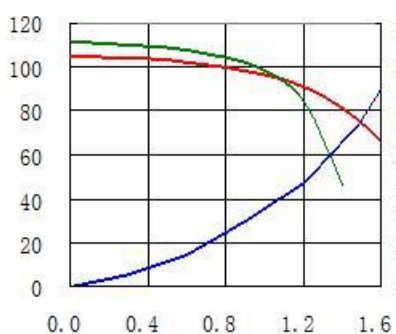
18. CDRH105RNP-680NC



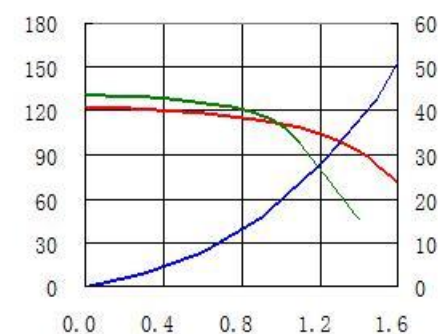
19. CDRH105RNP-820NC



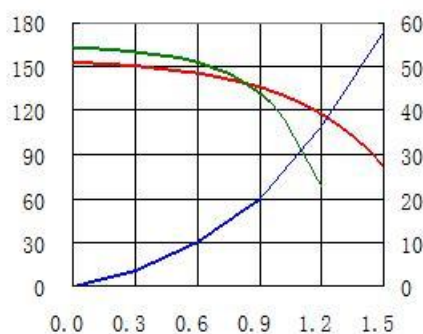
20. CDRH105RNP-101NC



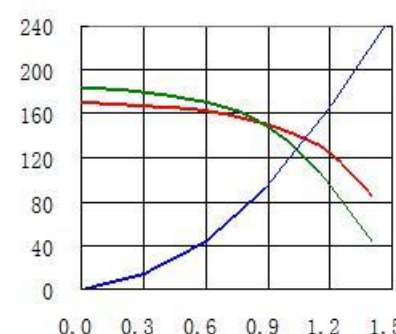
21. CDRH105RNP-121NC



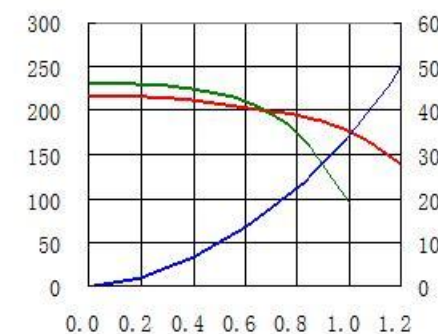
22. CDRH105RNP-151NC



23. CDRH105RNP-181NC



24. CDRH105RNP-221NC



Note: This specification is subject to change without notice. Please contact your nearest sales office for updated information when placing an order.

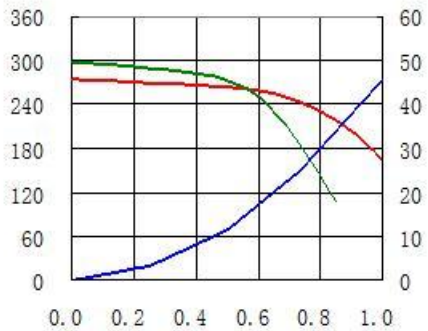
SMD Power Inductor

CDRH105R

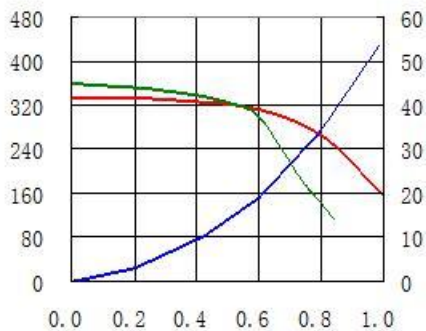


Saturation Current & Temperature Rise Graph — L (20°C) — L (100°C) — ΔT

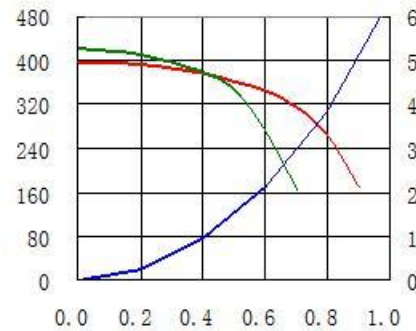
25. CDRH105RNP-271NC



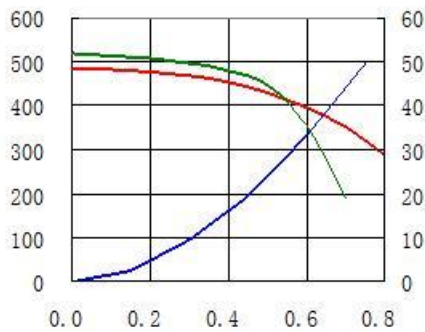
26. CDRH105RNP-331NC



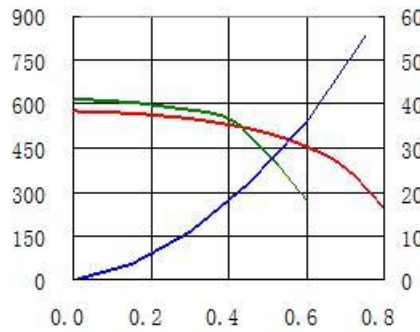
27. CDRH105RNP-391NC



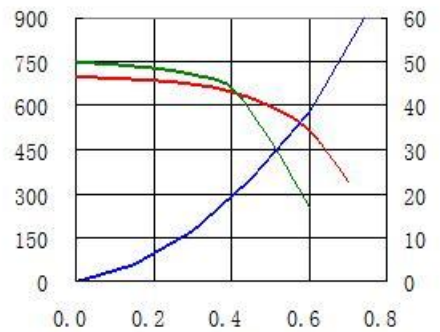
28. CDRH105RNP-471NC



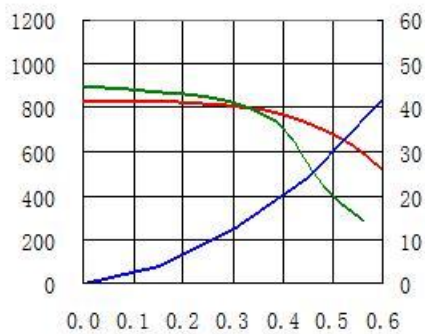
29. CDRH105RNP-561NC



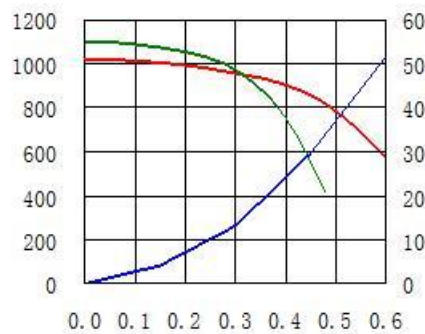
30. CDRH105RNP-681NC



31. CDRH105RNP-821NC



32. CDRH105RNP-102NC



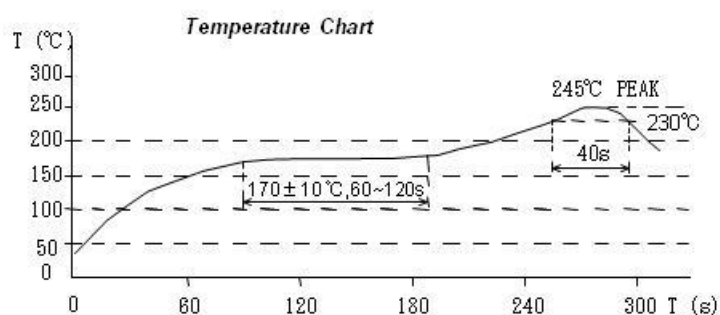
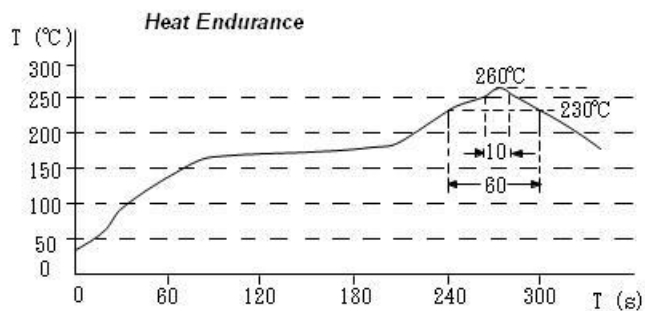
Note: This specification is subject to change without notice. Please contact your nearest sales office for updated information when placing an order.

SMD Power Inductor

CDRH105R



Solder Reflow Condition



For sales office information, please [click here](#) to visit our website.

Note: This specification is subject to change without notice. Please contact your nearest sales office for updated information when placing an order.