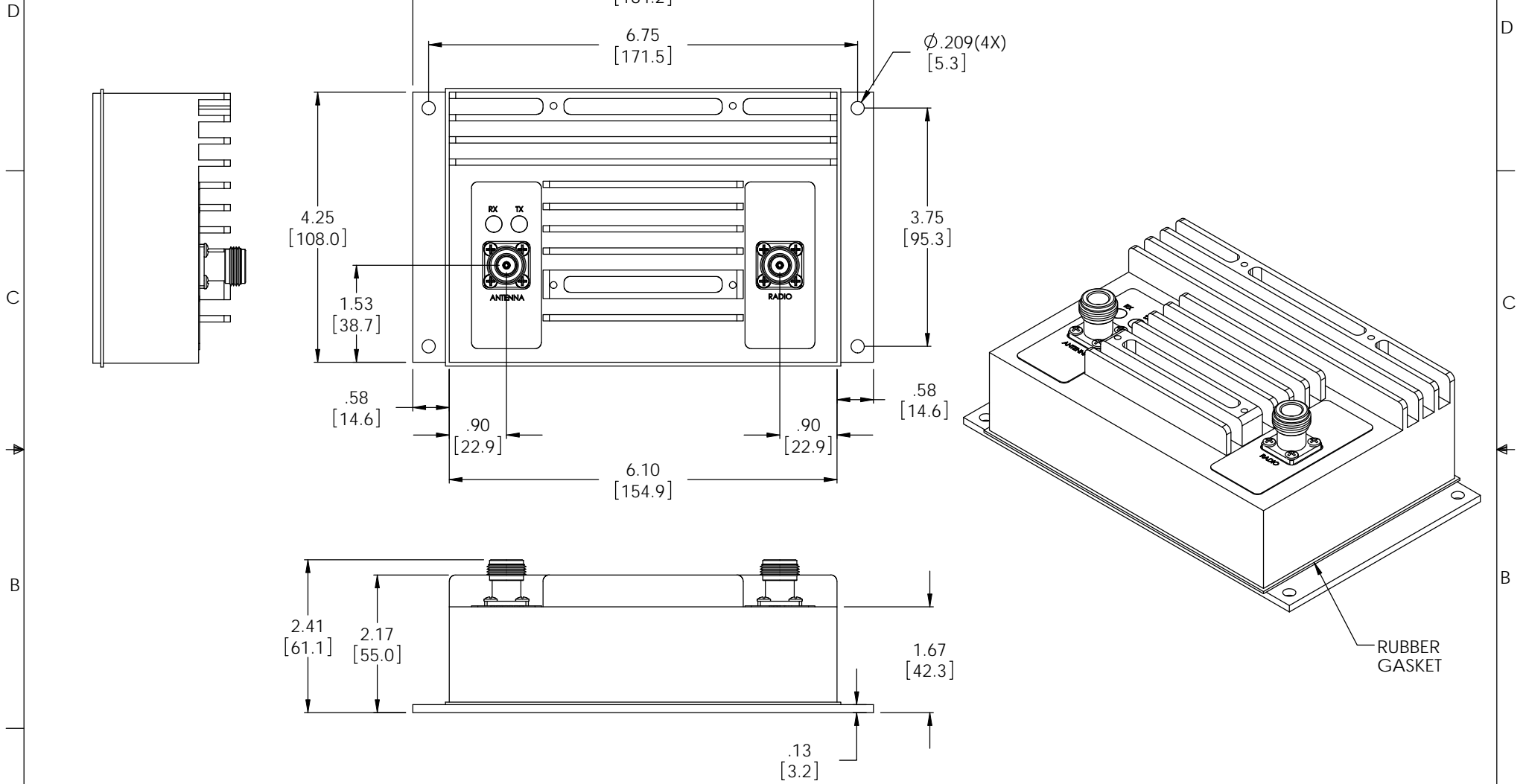


THE INFORMATION CONTAINED IN THIS DRAWING IS THE SOLE PROPERTY OF L-COM, INC. ANY REPRODUCTION IN PART OR WHOLE WITHOUT THE WRITTEN PERMISSION OF L-COM, INC. IS PROHIBITED.

REVISIONS			
REV	DESCRIPTION	DATE	APPROVED
A	Initial Release	05/13/10	B.Puchaski

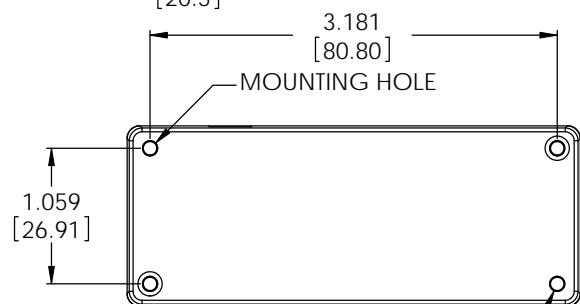
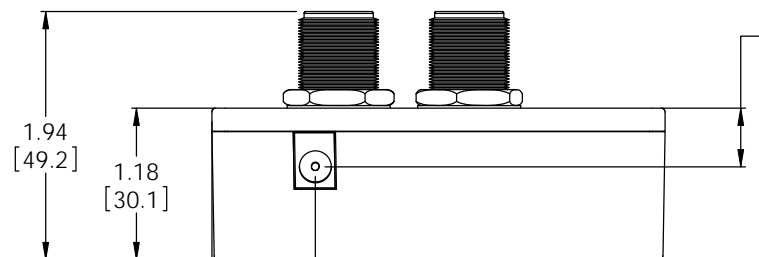
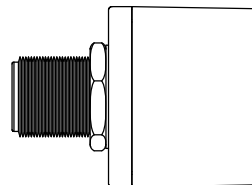
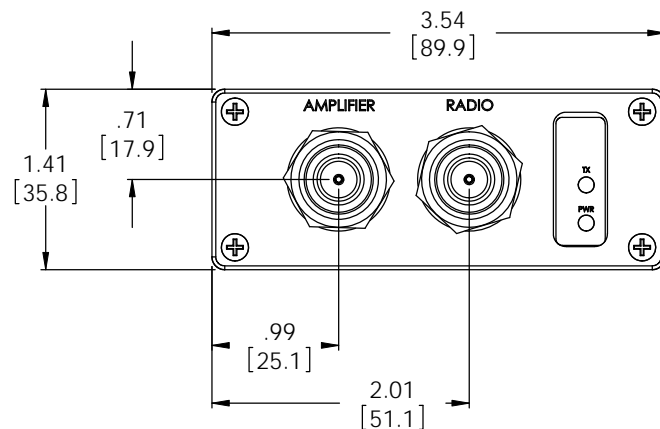


NOTE: BIAS-T DC INJECTOR ALWAYS TO ACCOMPANY THIS AMP (SEE SHEET 2)

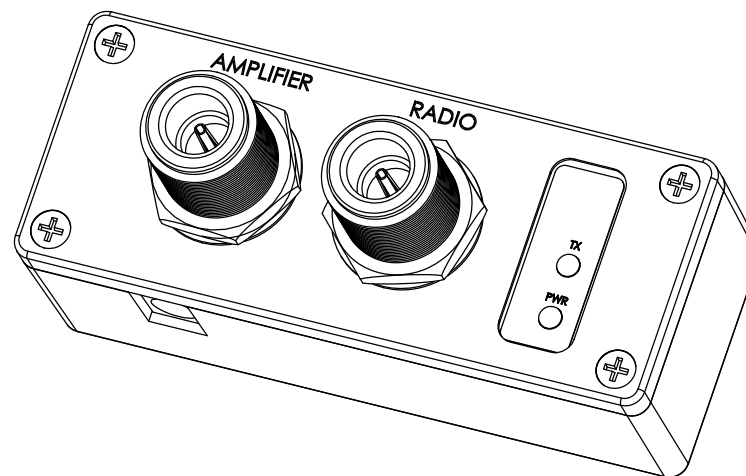
UNLESS OTHERWISE SPECIFIED, DIMENSIONS ARE IN INCHES [mm] DIMENSIONAL TOLERANCES: .X = ±.1 .XX = ±.01 .XXX = ±.005 ANGULAR TOLERANCES: ALL = ± 1° PROJECTION 	APPROVALS	DATE	 45 BEECHWOOD DRIVE NORTH ANDOVER, MA 01845	
	DRAWN BY B.Puchaski	05/13/10		
	CHECKED BY M.Audas	05/13/10	CATEGORY CATALOG	
	APPROVED BY M.Audas	05/13/10	PRODUCT DESCRIPTION 4.2 x 6.1 Hi-Pwr Remote Amp Enclosure	
CONFIGURATION DETAILS OF UNDIMENSIONED FEATURES MAY VARY		SIZE A	FSCM NO. 43321	DWG. NO. HA-4261
COLOR VARIATIONS MAY OCCUR		SCALE: NONE	CAD FILE: HA-4261.SLDDRW	REV. A
		SHEET 1 OF 2		

THE INFORMATION CONTAINED IN THIS DRAWING IS THE SOLE PROPERTY OF L-COM, INC. ANY REPRODUCTION IN PART OR WHOLE WITHOUT THE WRITTEN PERMISSION OF L-COM, INC. IS PROHIBITED.

REVISIONS			
REV	DESCRIPTION	DATE	APPROVED
	Initial Release	05/13/10	B.Puchaski



MOUNTING HOLES ON BOTTOM OF CASE ACCEPT #6 SELF-TAPPING SCREWS



UNLESS OTHERWISE SPECIFIED, DIMENSIONS ARE IN INCHES [mm] DIMENSIONAL TOLERANCES: X = ± 1 .XX = ± .01 .XXX = ± .005 ANGULAR TOLERANCES: ALL = ± 1° PROJECTION 	APPROVALS DRAWN BY B.Puchaski	DATE 05/13/10	 45 BEECHWOOD DRIVE NORTH ANDOVER, MA 01845	
	CHECKED BY M.Audas	05/13/10		
	APPROVED BY M.Audas	05/13/10	CATEGORY CATALOG	
	CONFIGURATION DETAILS OF UNDIMENSIONED FEATURES MAY VARY		PRODUCT DESCRIPTION Bias-T DC Power Injector	
COLOR VARIATIONS MAY OCCUR		SIZE A	FSCM NO. 43321	DWG. NO. HA-4261
		SCALE: NONE	CAD FILE: HA-4261.SLDDRW	SHEET 2 OF 2