

5 3 6 1 2 - X X X - X X X

S=15μ" [0.38μm] GOLD  
ON CONTACT AREA (NOTE 13)  
150μ" [3.81μm] TIN/LEAD ON TAIL

G=30μ" [0.76μm] GOLD (NOTE 13)  
ON CONTACT AREA  
150μ" [3.81μm] TIN/LEAD ON TAIL

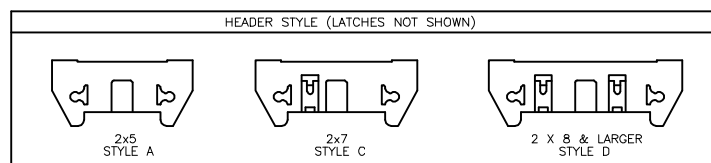
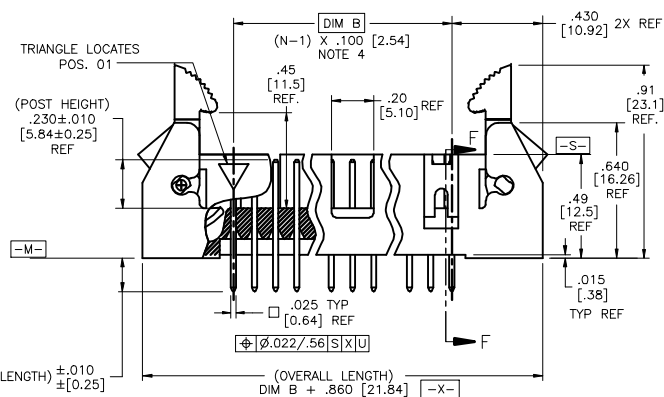
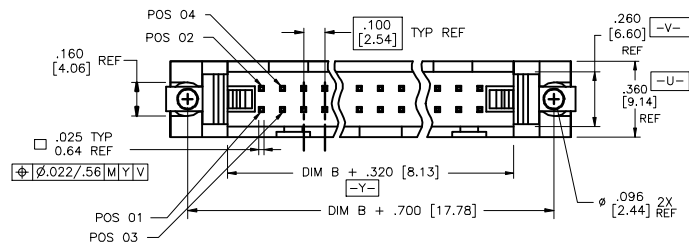
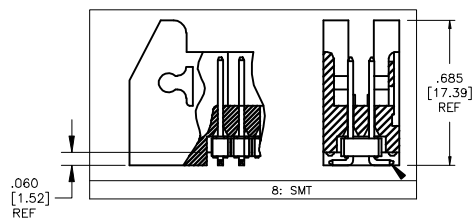
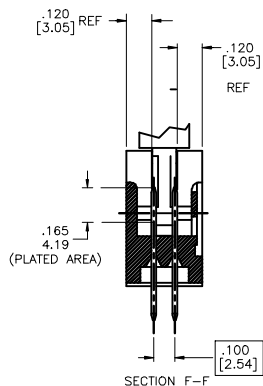
S=15μ"[0.38μm]GOLD (NOTE 13)  
ON CONTACT AREA  
100μ"[2.54μm]TIN ON TAIL

G=30μ"[0.76μm]GOLD (NOTE 13)  
ON CONTACT AREA  
100μ"[2.54μm]PURE TIN ON TAIL

RETENTION  
R= RETENTION LEG

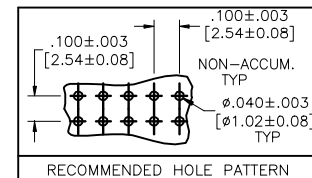
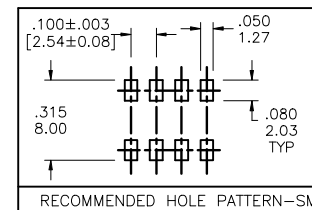
TAIL LENGTH  
1=.085/2.16  
2=.112/2.84  
4=.120/3.05  
6=.150/3.81  
7=.675/17.15  
8= SMT

DASH NO.	POSITIONS	HEADER STYLE
10	2 X 5	A
14	2 X 7	C
16	2 X 8	D
20	2 X 10	D
26	2 X 13	D
34	2 X 17	D
40	2 X 20	D
50	2 X 25	D

[illegible]

NOTES:

- ① HOUSING MAT'L: HIGH TEMPATURE THERMOPLASTIC. UL94V-0.  
COLOR : BLACK
- ② PIN MATERIAL: PHOSPHOR-BRONZE
- ③ 3 LBS/1.36 KG MIN. RETENTION.
- ④ TO DETERMINE DIMENSION:  
N = NUMBER OF POSITIONS.  
EXAMPLE: 10 POS., (N-1) x .100[2.54]=.900[22.87]
- ⑤ RETENTIVE LEG:  
RETENTIVE LEG APPLICABLE TO TAIL LENGTH .120/3.05 ONLY.  
RETENTION IS APPLIED TO FOUR PINS ON PART SIZES OF 2x14 AND SMALLER,  
AND APPLIED TO EIGHT PINS ON PARTS SIZES OF 2x15 AND LARGER.  
5LB/2.3KG MAX INSERTION FORCE AND .25LB./1KG MIN RETENTION FORCE  
PER RETENTIVE PIN USING .062/1.57 THICK CIRCUIT BOARD AND RECOMMENDED  
HOLE PATTERN. RETENTIVE LOCATION AT THE DISCRETION OF THE MANUFACTURER.  
OMIT FROM PRODUCT NUMBER IF THIS FEATURE IS NOT APPLICABLE.
6. PACKAGED IN TRAYS.
8. UNDERPLATING: 50 $\mu$ "/1.27 $\mu$ m Ni.
- ⑨ FOR POLARIZATION, SPECIFY POSITION NUMBER (i.e.. 03= PIN 3) TO OMIT PIN.  
OMIT FROM PRODUCT NUMBER IF THIS FEATURE IS NOT APPLICABLE.
- ⑩ ADD "LF" SUFFIX AT THE END OF PART NUMBER FOR LEAD FREE OPTION.
- ⑪ THIS PRODUCT MEETS EUROPEAN UNION DIRECTIVES AND OTHER  
COUNTRY REGULATION AS DESCRIBED IN GS-22-008.
12. THE HOUSING WILL WITHSTAND EXPOSURE TO 260°C PEAK TEMPERATURE  
FOR 15 SECONDS IN A WAVE SOLDER APPLICATION WITH A 1.5mm  
MINIMUM THICK CIRCUIT BOARD. SEE APPLICATION NOTES/PROCEDURES  
IF THEY ARE AVAILABLE.  
  
THE HOUSING WILL WITHSTAND EXPOSURE TO 260°C PEAK TEMPERATURE  
FOR 20 SECONDS IN A CONVECTION, INFRA-RED OR VAPOR PHASE REFLOW  
OVEN. SEE APPLICATION NOTES/PROCEDURES IF THEY ARE AVAILABLE.
- ⑬ PLATING OPTIONS:  
MAY BE EITHER GOLD OR GXT PLATED AT MANUFACTURER'S OPTION.



mat'l. code				surface ISO 1902		tolerance ISO 406 ISO 1101		projection ISO 1101		product family QUICKIE	
ltr	ecn no	dr	date	tolerances unless otherwise specified							
K				angles	linear	.XX±.01/XX±.03 XXX±.005/XX±.013 XXX±.0020/XXX±.0051		INCH/MM		title .100/2.54cc EJECT LATCH SHOROUDED VERTICAL HEADER	
				0'±2'				scale 1:1		dwg no 53612	
				dr	D. INGRAM	7/12/99					sheet 2 of 2 size A3
				engr	L. GREEN	7/21/99					
				chr	L. GREEN	7/21/99					
				appd	L. GREEN	7/21/99					
sheet index	revision sheet									type Product Customer Drawing	