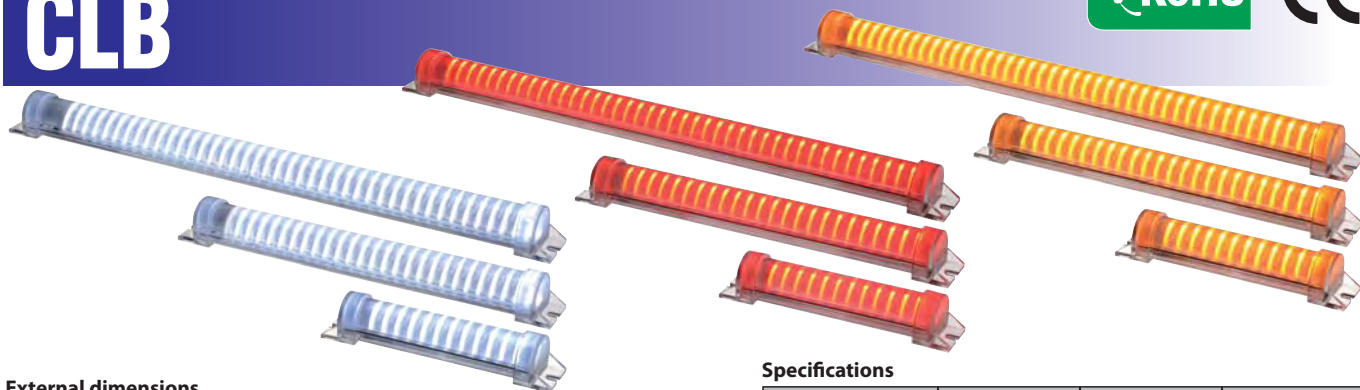
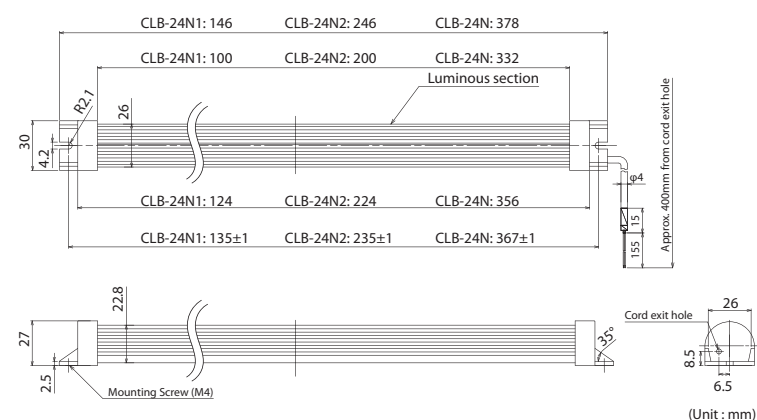


LED Light Bar CLB



External dimensions



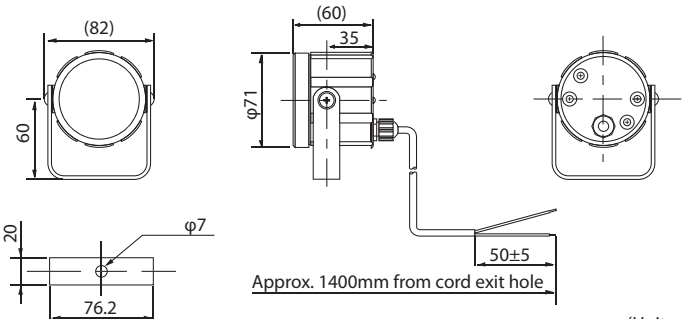
Specifications

Model	CLB-24N1-			CLB-24N2-			CLB-24N-		
LED color	R	Y	C	R	Y	C	R	Y	C
Rated voltage	DC24V (No polarity)								
Operating voltage range	DC24V ± 1V								
Rated current consumption(mA)	35 ⁺⁵ ₋₅	35 ⁺⁵ ₋₅	60 ⁺¹⁰ ₋₁₀	70 ⁺¹⁰ ₋₁₀	70 ⁺¹⁰ ₋₁₀	120 ⁺²⁰ ₋₂₀	122 ⁺¹⁸ ₋₁₈	122 ⁺¹⁸ ₋₁₈	224 ⁺⁵⁰ ₋₄₀
Operating temperature range	-30°C ~ +60°C								
Relative humidity	Less than 90% RH (No condensation)								
Main body	Polycarbonate								
Protecting rate	IP42								
Luminous intensity at optical center(1000mm)	20	20	85	40	40	185	60	60	300
Mounting Direction	Indoor Horizontal, vertical (up and down)								
Vibration resistance	19.6m/s ²								
Agency Approval	CE / RoHS								
Mass	41g ± 10%			60g ± 10%			86g ± 10%		

LED Work Light CLE



External dimensions



Specifications

Mode	CLE-24	CLE-24N
Glass surface	Frosted	Clear
Rated voltage	DC24V (No polarity)	
Rated power consumption	3W	
Operating voltage range	Rated Voltage ±10%	
Operating temperature range	-25°C ~ +60°C	
Protecting rate	IP65f	
Luminous intensity (at optical center)	20cd	130cd
Mounting Direction	Horizontal, vertical (up and down)	
Vibration resistance	19.6m/s ²	
Mass	0.3kg	
Agency Approval	CE / RoHS	

PATLITE Corporation

8-8, Matsuyamachi, Chuo-ku, Osaka, Japan 542-0067
International Division, Sales and Marketing Department TEL.+81-6-6763-8220 FAX.+81-6-6763-8221

PATLITE (U.S.A.) Corporation
20130 S. Western Ave., Torrance, CA 90501, U.S.A. TEL.+1-310-328-3222 FAX.+1-310-328-2676

PATLITE Corporation/European Office
Teinfalt strasse 8/4.Stock 1010 Vienna, Austria TEL.+43-1-961-0655 FAX.+43-1-961-0655-210

PATLITE (SINGAPORE) PTE LTD
2 Havelock Road, #05-01/02, Apollo Centre, Singapore 059763 TEL.+65-6226-1111 FAX.+65-6324-1411

PATLITE (CHINA) Corporation
Block E, No.9 FL, Hua Du Bldg., No.828-838 Zhang Yang Road, Pudong Dist., Shanghai 200122 China TEL.+86-21-68761533 FAX.+86-21-68769688

<http://www.patlite.co.jp/int/> E-mail: overseas@patlite.co.jp

CAUTION

To ensure correct use of these products, read the Instruction Manual prior to use.
Failure to follow all safeguards can result in fire, electric shock, or other accidents.
Specifications are subject to change without notice.



For the benefit of mankind and the earth,
Patlite is committed to developing environ-
mentally friendly products.



2231A 0802 N(N)/N(NP)A

PATLITE®

LED Luminaire Series

PATLED's LED Light Bar Type CLF
PATLED's LED Work Light Type CLM
LED Light Bar Type CLB
LED Work Light Type CLE

PATLED's®

Low power consumption, low heat generation,
high luminous intensity, long service life
LED luminaries provide superior performance
to the conventional luminaries

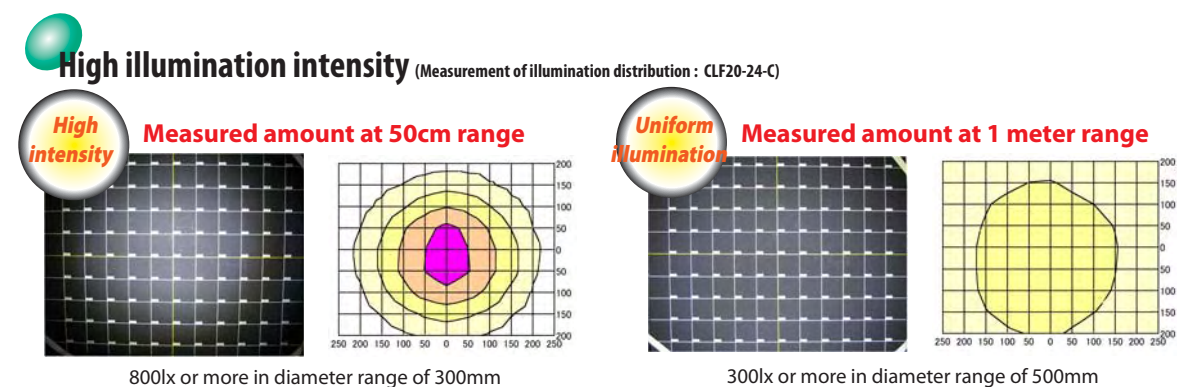
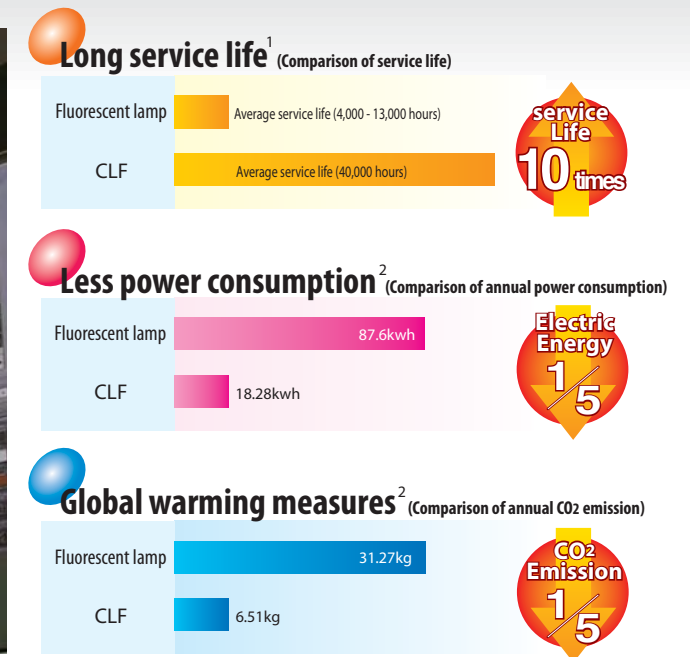


www.patlite.co.jp

PATLED[☆]s[®]

PATLITE's LED luminaries, PATLED[☆]s[®] series is designed as next generation luminary devices that serve a wide range of application in factory automation field.

PATLED'S series provide superior performance to the conventional luminaries



lx : Luminous intensity • • • Amount of light power of the illuminated area

PATLED's (CLM and CLF series) are designed to satisfy the technical requirements for luminary devices. PATLED's are CE Marking and RoHS Directive compliant for use in overseas countries.

Example of recommended standards for luminous intensity

CE Marking • • • • Work-plane illuminance 500lx or more International Commission on Illumination

CLF20-24-C type

PATLITE[®]

1. LED life is when its brightness decreases to 70% of initial brightness
2. Calculation of annual CO₂ emission, comparison between 100V20W fluorescent lamp and CLF20-24-C. Assumed 10 hour operation per day. Amount of CO₂ emission is 0.357kg per hour.

CLF



Image of vertical mounting



Waterproof flat type LED Light Bar type CLF

High power 1,700lx illumination* for precise work operation

1,700lx illumination and daylight color temperature are suitable for performing precise work.
* Luminous intensity at 50cm range from CLF20-24-C

Water and dustproof IP67 construction

Robust aluminum body, polycarbonate cover and silicone gasket securely protect the product inside. Rubber gasket is placed on the backside of body to secure IP67 construction for flush mounting.



Flicker and stroboscopic effect free operation

Preventing eye fatigue by fluorescent flicker and misjudgment of rotating object even without high frequency inverter

Infrared rays (radiation heat) and ultraviolet rays (cause of material deterioration) are not contained

Stable operation from at low temperature operation of -30°C to at high temperature operation of +60°C

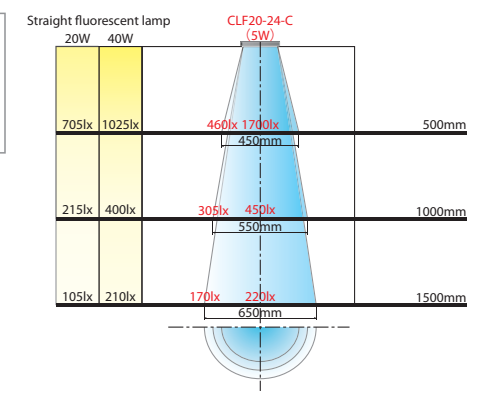
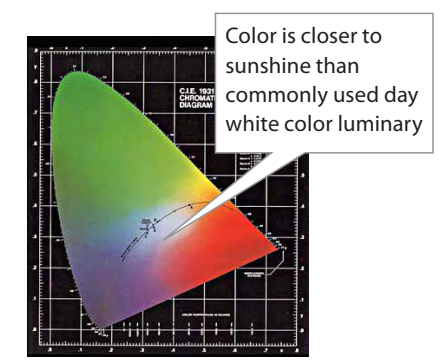


White color LED is suitable for the luminary for a machine tool and control panel



Red Semiconductor manufacturing machinery, tester, ect
Yellow Semiconductor manufacturing machinery, cleanroom environment, ect

Specifications of red color type and yellow color type may be different from those of white color type



Daylight color close to sunshine

Daylight color (6,500-7,500K) is defined as a color close to noon sunshine, and suitable for recognition of shape, precise work, test and research applications. (Close to D65 light source)

Illumination simulation

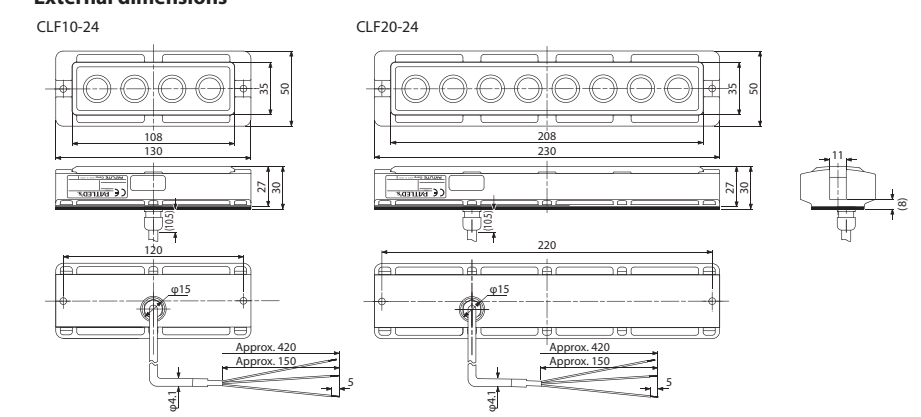
Stable illumination range and luminous intensity thanks to newly designed lens. As a replacement of fluorescent lamp, CLF series provide long service life and maintenance free operation.

Water and dustproof IP67 construction

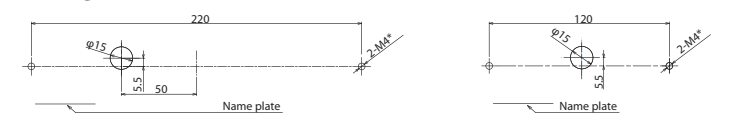
Power cable is drawn from the backside of body. Cable is not exposed and cable bushing is not necessary when flush mounting. Multiple units can be installed to space without clearance vertically or horizontally.



External dimensions



Mounting dimensions



* In case mounting with supplied nuts : φ4.5

(Unit : mm)

Model	CLF10-24			CLF20-24		
LED color	R	Y	C	R	Y	C
Rated voltage	DC24V (No polarity)					
Operating voltage range	Rated voltage±10%					
Power consumption	2.5W			5W		
Light source	High intensity LED×4			High intensity LED×8		
Luminous intensity at optical center (1x/50cm)	240	320	850	470	630	1,700
Main body	Housing : Aluminum			Cover : Polycarbonate		
Operating temperature range	-30°C ~ +60°C (No condensation 90% RH or less)					
Mounting direction	Indoor			Forward direction		
Protection rating	IP67					
Vibration resistance	19.6m/s ²					
Mass	205g±10g			345g±10g		

CLM

PATLED[®]s



Oil resistant spot illumination **LED work light** type CLM-24

Superior luminous intensity of 500cd at optical center

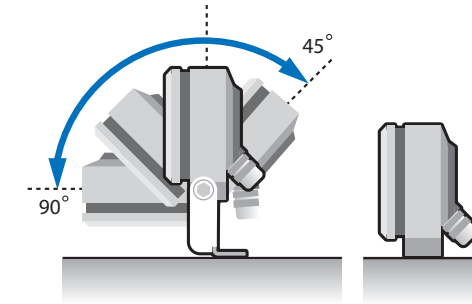
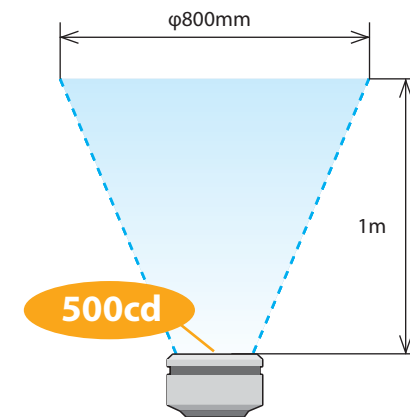
High intensity LED is used for light source. Power consumption is only 3W, yet heat generation is greatly reduced.

Water, oil and dust resistant IP67F construction

IP67F construction is suitable for machine tool application that oil resistance is essential. Body is made of robust aluminum.

RoHS Directive compliant and lead-free soldering design

CLM-24 is RoHS compliant and environment conscious materials are used.



Luminous intensity of 500cd at optical center

Realizing the brightness than ever with 5 super-bright white LEDs as a light source. 500cd luminous intensity at optical center, yet power consumption is only 3W or less with low heat generation. Illumination distribution area is approximately 800mm in diameter at 1 meter range

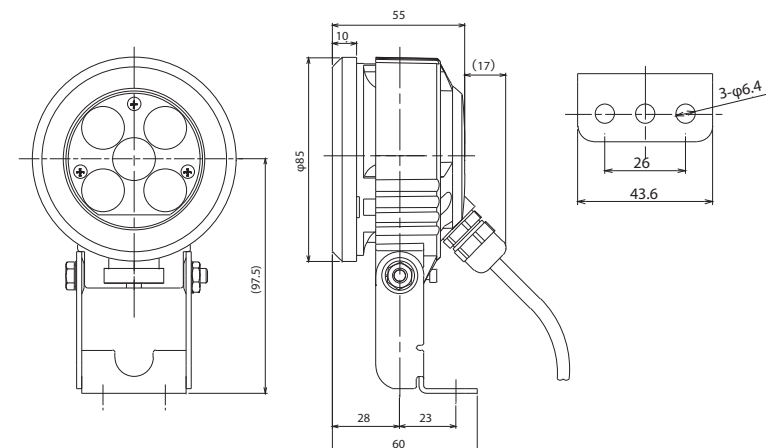
Mounting in any directions is possible

CLM-24 can be mounted in any directions with adjustable mounting angle. Body and mounting bracket is securely fixed with a screw placed on the backside of body. Direct Mounting is also possible when mounting bracket is removed.

Efficient heat radiation design

Heat sink designed aluminum body provides maintenance free long service life and low temperature operation that stabilizes the brightness of LED.

External dimensions



Mounting dimensions

Model	CLM-24
Rated voltage	DC24V (No polarity)
Operating voltage range	21.6V~26.4V
Rated power consumption	3W
Rated current consumption	100 ± 5mA
Light source	High intensity LEDx5
Luminous intensity (at optical center)	500cd (at optical center)
Main body	Aluminum die cast (baked surface finish)
Glass surface	Tempered glass
Operating temperature range	-30°C - +60°C (No condensation 90% RH or less)
Mounting Direction	Horizontal, vertical (up and down)
Protecting rate	IP67F
Vibration resistance	19.6m/S ² JIS C 0911-1984 30Hz
Mass	0.45kg

*Power cable length : 1400 mm from cable exit
*Do not stare into beam CLASS 2 LASER

(Unit: mm)