


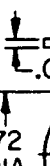
CATALOG LISTING
102TL2-50 SERIES

CHART 1


THIS DRAWING COVERS A PROPRIETARY ITEM AND IS THE PROPERTY OF MICRO SWITCH. A DIVISION OF HONEYWELL. THIS DRAWING IS NOT TO BE COPIED OR USED WITHOUT THE APPROVAL OF MICRO SWITCH



 LOCKWASHER

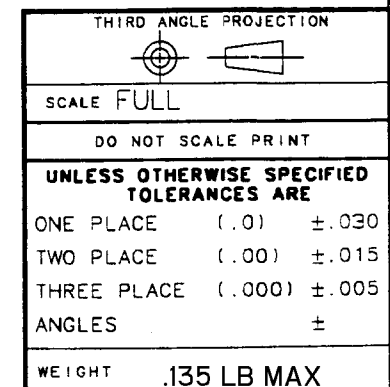
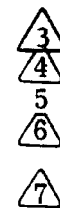


 LOCKING RING



 HEX NUT (2)

- 1 - SWITCHES ARE CAPABLE OF WITHSTANDING A TEMPERATURE OF 160°F CONTINUOUSLY AT FULL RATED LOAD
- 2 - CIRCUIT DESIGNATION, MICRO SWITCH CATALOG LISTING, DATE CODE AND MS NUMBER IDENTIFIED ON SIDE OF SWITCH
- 3 - KEYWAY SHOWN ON LEFT SIDE
- 4 - FURNISHED UNASSEMBLED
- 5 - THESE SWITCHES ARE QUALIFIED UNDER MIL-S-3950
- 6 - SUFFIX LETTER MUST BE ADDED FOR DESIRED TYPE TOGGLE LOCKING. SEE CHART FOR AVAILABLE LOCKING COMBINATIONS
- 7 - THE SEALING GROMMET SHALL SEAL ON A SMOOTH WIRE INSULATION OF .040 TO .083 DIAMETERS (16-20 GAGE)
- 8 - UNUSED TERMINAL HOLES MAY BE SEALED WITH PLUGS



RASTER

RELEASE NO. CO-78465	REPLACES
----------------------	----------

CHECK

CHECK	
-------	--

CHECK	✓
-------	---

94

UN

10

