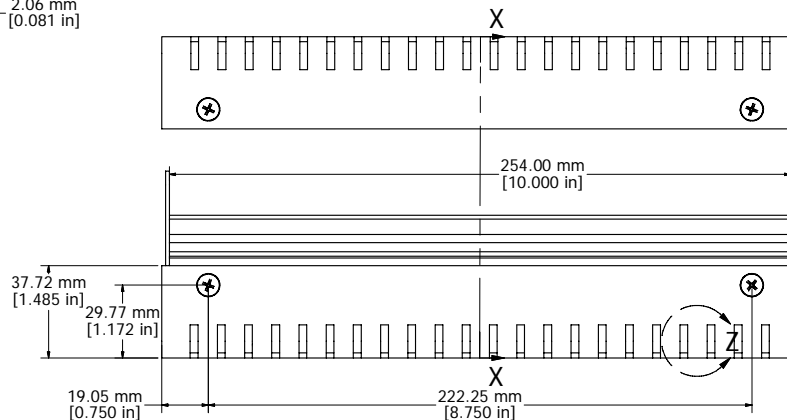
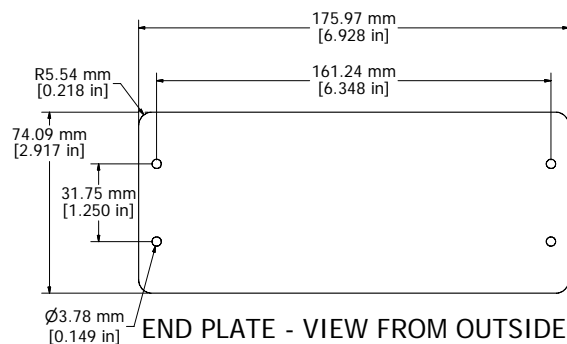
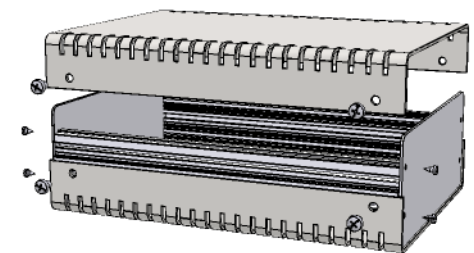


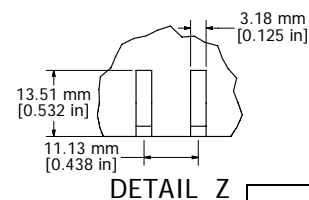
SECTION X-X



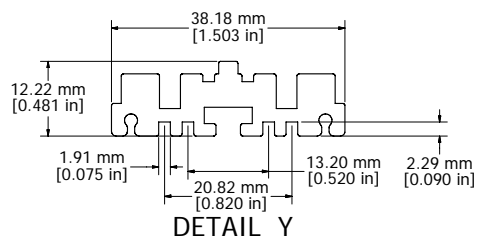
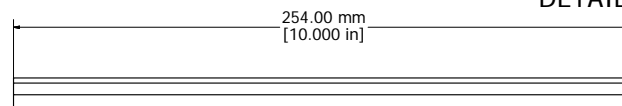
ASSEMBLY - VIEW FROM SIDE (OPEN)



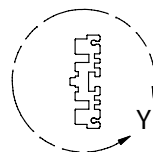
END PLATE - VIEW FROM OUTSIDE



DETAIL Z



DETAIL Y



EXTRUSION - VIEW FROM INSIDE

- 12 GAUGE ALUMINUM BODY PAINTED (RAL 7032)
- EIGHT 6-32 NICKEL PLATED SCREWS
EIGHT 4-24 x 1/4" SELF-TAPPING SCREWS
- 0.064" THICK ALUMINUM PANELS (NATURAL ALUMINUM)
- FOUR SELF ADHESIVE RUBBER FEET
EXTRA SCREWS - 1421J6 (6-32 x 1/4 SHEET METAL SCREWS)

Contact Factory [mjm@hammondmg.com](mailto:mjm@hammondmg.com) for quotes  
Enclosures can be Factory Modified ( Milling, Drilling, Printing etc. )  
Solid models of this enclosure available in STEP or IGES.

**HAMMOND**  
**MANUFACTURING™**  
**1402FV**  
[www.hammondmg.com](http://www.hammondmg.com)

# Mouser Electronics

Authorized Distributor

Click to View Pricing, Inventory, Delivery & Lifecycle Information:

[Hammond:](#)

[1402FV](#)