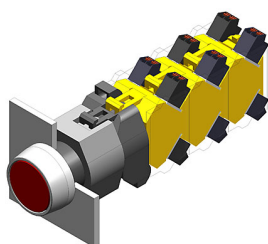


EAO – Your Expert Partner for Human Machine Interfaces

704.062.4 - Illuminated pushbutton actuator

704.062.4 - Illuminated pushbutton actuator



Attention: The preview is based on a sample product. This can differ from your current configuration.

Mounting

Mounting cut-out	Ø 22.5 mm
Design	raised

Front

Front shape	round
Front dimension	Ø 29 mm
Front ring material	Aluminium
Front ring colour	natural anodized

Other Attributes

Weight	0.056 kg
--------	----------

Operating-/Indication part

Lens optics	transparent
Lens material	Plastic
Lens colour	yellow
Lens profile	flat

IP-Rating

Front protection	IP 65
------------------	-------

Connection Method

Terminal	Screw
----------	-------

Actuator

Switching action	Maintained
Housing material	Plastic
Housing colour	grey

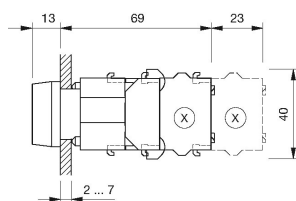
Function

Illuminated pushbutton

EAO – Your Expert Partner for Human Machine Interfaces

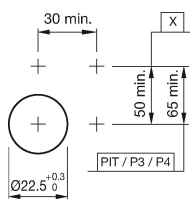
704.062.4 - Illuminated pushbutton actuator

Dimensions



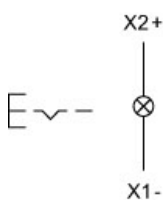
X = Screw terminal

Mounting cut-outs



PIT = Push-in terminal

Wiring diagram



Additional information

Frontring with protective cover to be mounted with a torque of 40 Ncm onto actuator
Max. 3 switching elements can be clipped on
The colour of anodized aluminium parts can vary due to technical production reasons

Legend

Switching action: C = Maintained