

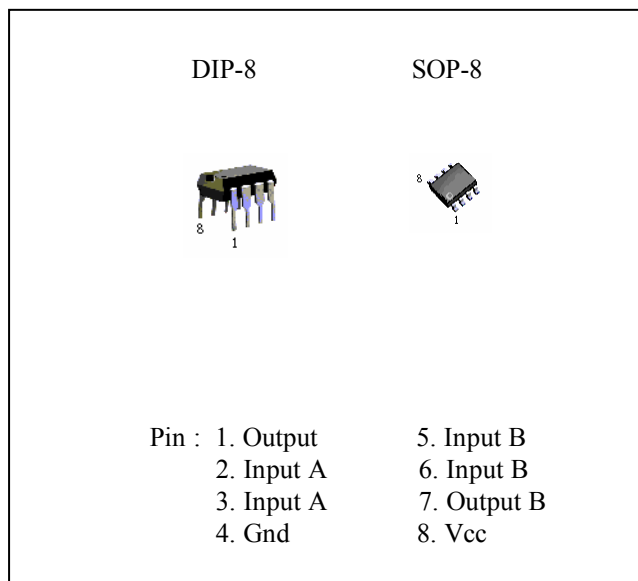
Dual Voltage Comparator

The PJ393 is dual independent precision voltage comparators capable of single- or split-supply operation.

specifications as low as 2.0 mV make this device an excellent ground level with single-supply operation. Input offset-voltage selection for many applications in consumer automotive, and It is designed to permit a common mode range-to- industrial electronics.

FEATURES

- Output voltage compatible with DTL, ECL, TTL, MOS and CMOS Logic Levels
- Low input bias current -25 nA
- Low input offset current -5.0 nA
- Low input offset voltage --5.0 mV(max)
- Input common mode range to ground level
- Differential Input voltage range equal to power supply voltage
- Very low current drain independent of supply voltage - 0.4 mA
- Wide single-supply range - 2.0 Vdc to 36 Vdc
- Split-supply range - ± 1.0 Vdc to ± 18 Vdc



ORDERING INFORMATION

Device	Operating Temperature	Package
PJ393CD	-20°C +85°C	DIP-8
PJ393CS		SOP-8

MAXIMUM RATINGS

Rating	Symbol	Value	Unit
Power Supply Voltage	V_{CC}	+36 or ± 18	Vdc
Input Differential Voltage Range	V_{IDR}	36	Vdc
Input Common Mode Voltage Range	V_{ICR}	-0.3 to 36	Vdc
Input Current (2) ($V_{in} = -0.3$ Vdc)	I_{in}	50	mA
Output Short Circuit Duration	I_{SC}	Continuous	mA
Output Sink Current (1)	I_{sink}	20	mA
Power Dissipation@ $T_A=25^\circ\text{C}$ Plastic DIP Derate above 25°C	P_D $1/R_{\theta JA}$	570 5.7	mW mW/°C
Maximum Operating Junction Temperature PJ393	$T_{J(max)}$ T_{stg}	125 -65 to 150	°C °C

ELECTRICAL CHARACTERISTICS

($V_{CC} = 50\text{Vdc}$, $0^\circ\text{C} \leq T_A \leq 70^\circ\text{C}$ unless otherwise stated)

Characteristics	Symbol	PJ393			Unit
		Min	Typ	Max	
Input Offset Voltage (3) $T_A = 25^\circ\text{C}$ $-20^\circ\text{C} \leq T_A \leq 85^\circ\text{C}$	V_{IO}	--	± 1.0 --	± 5.0 9.0	mV
Input Offset Current $T_A = 25^\circ\text{C}$ $-20^\circ\text{C} \leq T_A \leq 85^\circ\text{C}$	I_{IO}	--	± 5.0 --	± 50 ± 150	nA
Input Offset Current (4) $T_A = 25^\circ\text{C}$ $-20^\circ\text{C} \leq T_A \leq 85^\circ\text{C}$	I_{IB}	--	25 --	250 400	nA
Input Common Mode Voltage Range (4) $T_A = 25^\circ\text{C}$ $-20^\circ\text{C} \leq T_A \leq 85^\circ\text{C}$	V_{ICR}	0 0	-- --	$V_{CC}-1.5$ $V_{CC}-2.0$	Volts
Voltage Gain $R_L \geq 15\text{K}$, $V_{CC} = 15\text{Vdc}$. $T_A = 25^\circ\text{C}$	A_{VOL}	50	200	--	V/mV
Large Signal Response Time $V_{in} = \text{TTL Logic Swing}$. $V_{ref} = 1.4\text{Vdc}$ $V_{RL} = 5.0\text{Vdc}$. $R_L = 5.1\text{K}\Omega$ $T_A = 25^\circ\text{C}$	--	--	300	--	ns
Response Time (6) $V_{RL} = 5.0\text{Vdc}$ $R_K = 5.1\text{K}\Omega$ $T_A = 25^\circ\text{C}$	t_{TLH}	--	1.3	--	μs
Input Differential Voltage (7) All $V_{in} \geq \text{Gnd}$ or $V\text{-Supply}$ (if used)	V_{ID}	--	--	V_{CC}	V
Output Sink Current $V_{in-} \geq 1.0\text{Vdc}$ $V_{in+} = 0\text{Vdc}$ $V_O \leq 15\text{Vdc}$ $T_A = 25^\circ\text{C}$	I_{sink}	60	16	--	mA
Output Saturation Voltage $V_{in-} \geq 1.0\text{Vdc}$. $V_{in+} = 0$ $I_{sink} \leq 4.0\text{mA}$, $T_A = 25^\circ\text{C}$ $-20^\circ\text{C} \leq T_A \leq 85^\circ\text{C}$	V_{OL}	--	150 --	400 700	mV
Output Leakage Current $V_{in-} = 0\text{V}$, $V_{in+} \geq 1.0\text{Vdc}$ $V_P = 50\text{Vdc}$. $T_A = 25^\circ\text{C}$ $V_{in-} = 0\text{V}$, $V_{in+} \geq 1.0\text{Vdc}$ $V_O = 30\text{Vdc}$ $-20^\circ\text{C} \leq T_A \leq 85^\circ\text{C}$	I_{OL}	--	0.1 --	-- 1000	nA
Supply Current $R_L = \infty$ $T_A = 25^\circ\text{C}$ $R_L = \infty$ $V_{CC} = 30\text{V}$	I_{CC}	--	0.4 --	1.0 2.5	mA

Dual Voltage Comparator

FIGURE 2 - INPUT BIAS CURRENT versus POWER SUPPLY VOLTAGE

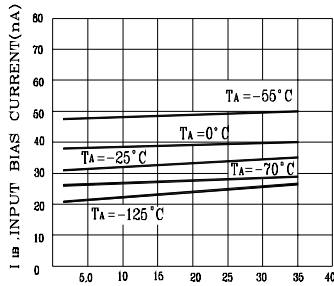


FIGURE 4 - POWER SUPPLY CURRENT versus POWER SUPPLY VOLTAGE

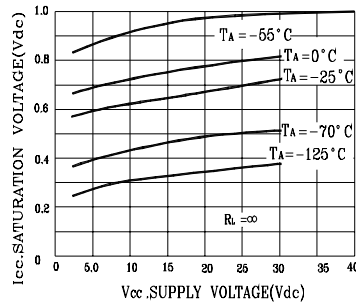
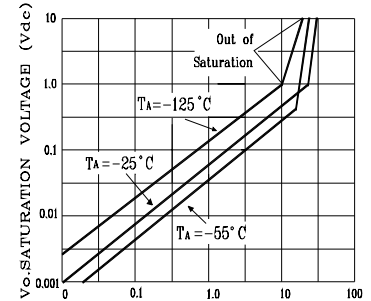


FIGURE 3 - OUTPUT SATURATION VOLTAGE versus OUTPUT SINK CURRENT



APPLICATIONS INFORMATION

This dual comparator feature high gain, wide bandwidth characteristics. This gives the device oscillation tendencies if the outputs are capacitively coupled to the inputs via stray capacitance. This oscillation manifests itself during output transitions (V_{OL} to V_{OH}). To alleviate this situation input resistors $<10\text{K}\Omega$ should be used. The addition of positive feedback ($<10\text{ mV}$) is also recommended.

It is good design practice to ground all unused pins.

Differential input voltages may be larger than supply voltage without damaging the comparator's inputs. Voltages more negative than -0.3 V should not be used.

FIGURE 5 - ZERO CROSSING DETECTOR (Single Supply)

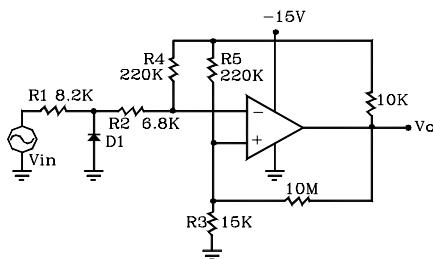
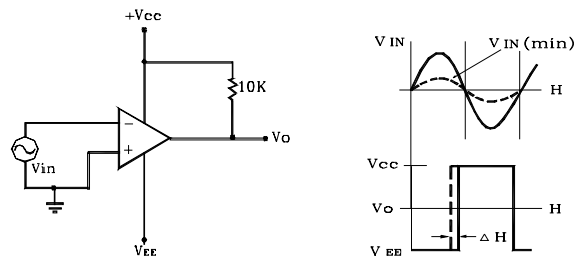


FIGURE 6 - ZERO CROSSING DETECTOR (Split Supplies)



Dual Voltage Comparator

FIGURE 7 - ZERO CROSSING DETECTOR

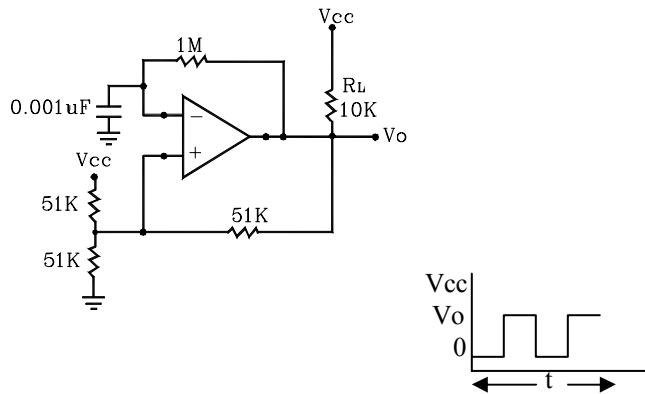


FIGURE 8 - TIME DELAY GENERATOR

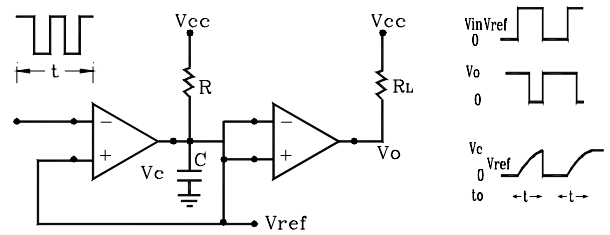
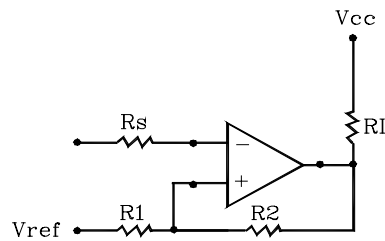


FIGURE 9 - COMPARATOR WITH HYSTERESIS

$$R_S = R_1 = R_2$$

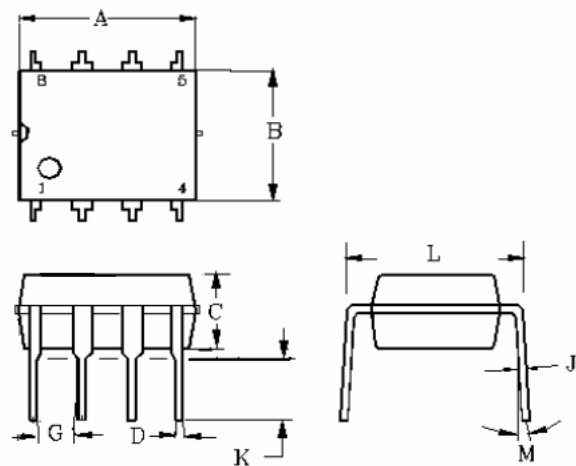
$$V_{th1} = V_{ref} * \frac{(V_{cc} * V_{ref}) * R_1}{R_1 * R_2 * R_L}$$

$$V_{th2} = V_{ref} * \frac{(V_{ref} * V_{oLow}) * R_1}{R_1 * R_2 * R_L}$$



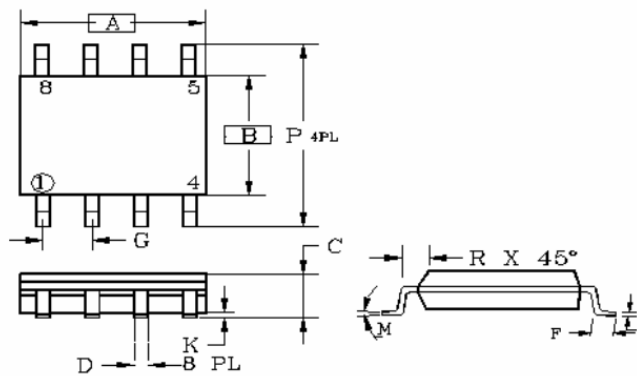
Dual Voltage Comparator

DIP-8



DIM	MILLIMETERS		INCHES	
	MIN	MAX	MIN	MAX
A	9.07	9.32	0.357	0.367
B	6.22	6.48	0.245	0.255
C	3.18	4.43	0.125	0.135
D	0.35	0.55	0.019	0.020
G	2.54BSC		0.10BSC	
J	0.29	0.31	0.011	0.012
K	3.25	3.35	0.128	0.132
L	7.75	8.00	0.305	0.315
M	-	10°	-	10°

SOP-8



DIM	MILLIMETERS		INCHES	
	MIN	MAX	MIN	MAX
A	4.80	5.00	0.189	0.196
B	3.80	4.00	0.150	0.157
C	1.35	1.75	0.054	0.068
D	0.35	0.49	0.014	0.019
F	0.40	1.25	0.016	0.049
G	1.27BSC		0.05BSC	
K	0.10	0.25	0.004	0.009
M	0°	7°	0°	7°
P	5.80	6.20	0.229	0.244
R	0.25	0.50	0.010	0.019