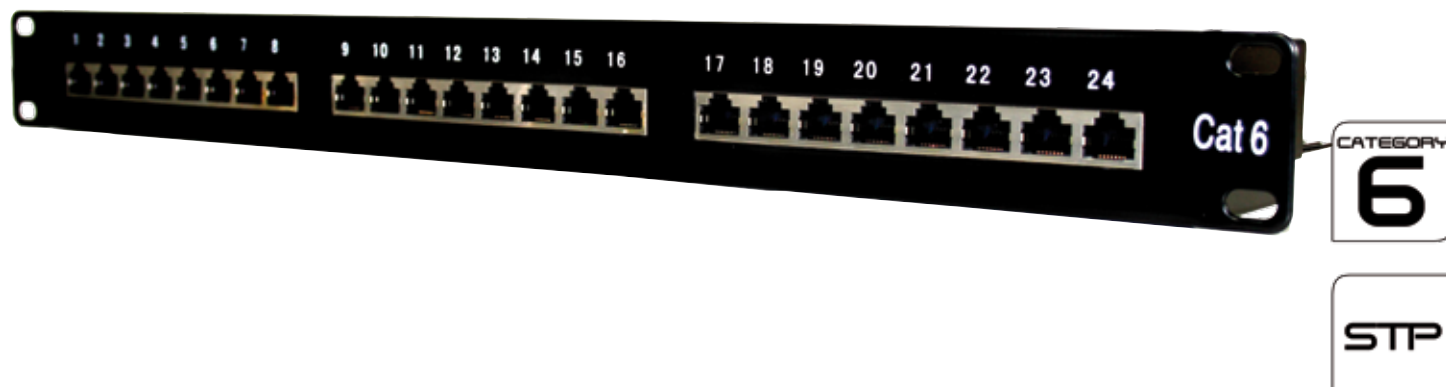


FEATURES:

- 24 port RJ-45 in 1U shielded
- LSA style termination blocks
- Integral cable management
- Rear Cover to improve shielding and protect terminations
- Easy Field Label System
- Earthing lead
- Port Identification
- Provided with cable ties as standard



RS SHIELDED 24 PORT PATCH PANEL

The Category 6 STP patch panels is available in 24 port version. It is manufactured, tested and labelled to the TIA/EIA 568A-B.2.2001 This product combined with our Category 6 FTP cables and our modules will perform in excess to the Category 6 specification.

The STP panel is designed to facilitate termination at the rear of the panel with IDC's horizontally laid on a tray. Integral cable management will firmly secure cables.

The patch panels are supplied with cable ties and earthing lead .

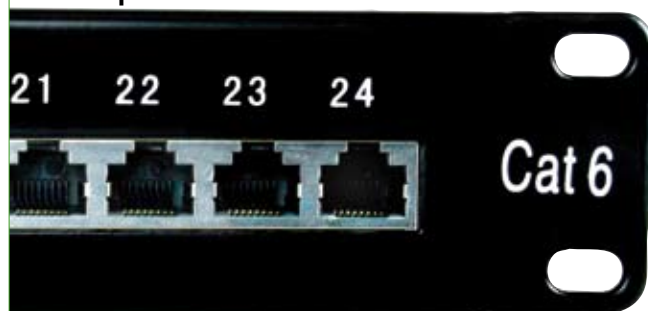
PRODUCT CHARACTERISTICS

DESCRIPTION	PRODUCT INFORMATION
Panel Width	19" (483mm)
Panel Depth	40mm
Panel Height	1U (44.45mm)
Colour	Black RAL 9005
Blocks	LSA
RJ-45	50 Micron Gold plated contact pins
Specification	EIA/TIA 568A/568B2:2002

ORDERING INFORMATION

DESCRIPTION	PART NO
RS 24 Port FTP Cat 6 Patch panel Black	557-183

Close Up



Rear View

