

**Ordering number FCN11455_LZ1-M2**

Family	Leila	FWHM	(simulated) 28
Type	Pack	Efficiency	-
LED	P4	cd/Im	-
Color	White	Gerber File	Available
Diameter	21.6 mm		
Height	14.7 mm		
Style	Round		
Optic Material	PMMA		
Holder Material	PC		
Fastening	Glue		
Status	On production		

**Ordering number FCN10788_LZ1-RS**

Family	Leila	FWHM	10 degrees
Type	Pack	Efficiency	95 %
LED	P4	cd/Im	-
Color	White	Gerber File	Available
Diameter	21.6 mm		
Height	14.65 mm		
Style	Round		
Optic Material	PMMA		
Holder Material	PC		
Fastening	Glue		
Status	On production		

**Ordering number FCN10790_LZ1-D**

Family	Leila	FWHM	14 degrees
Type	Pack	Efficiency	92 %
LED	P4	cd/Im	-
Color	White	Gerber File	Available
Diameter	21.6 mm		
Height	14.65 mm		
Style	Round		
Optic Material	PMMA		
Holder Material	PC		
Fastening	Glue		
Status	On production		

**Ordering number FCN10787_LZ1-M**

Family	Leila	FWHM	26 degrees
Type	Pack	Efficiency	91 %
LED	P4	cd/Im	-
Color	White	Gerber File	Available
Diameter	21.6 mm		
Height	14.65 mm		
Style	Round		
Optic Material	PMMA		
Holder Material	PC		
Fastening	Glue		
Status	On production		

**Ordering number FCN10789_LZ1-REC**

Family	Leila	FWHM	36+24 degrees
Type	Pack	Efficiency	-
LED	P4	cd/Im	-
Color	White	Gerber File	Available
Diameter	21.6 mm		
Height	14.65 mm		
Style	Round		
Optic Material	PMMA		
Holder Material	PC		
Fastening	Glue		
Status	On production		

**Ordering number FCN11102_LZ1-O-90**

Family	Leila	FWHM	40+16 degrees
Type	Pack	Efficiency	90 %
LED	P4	cd/Im	-
Color	White	Gerber File	Available
Diameter	21.6 mm		
Height	14.65 mm		
Style	Round		
Optic Material	PMMA		
Holder Material	PC		
Fastening	Glue		
Status	On production		

NOTE: The typical divergence will be changed by different color, chip size and chip position tolerance. The typical total divergence is the full angle measured where the luminous intensity is half of the peak value.



PRODUCT DATASHEET

Leila series

last update 25/5/2012



GENERAL INFORMATION

- Product series especially designed & optimized for P4 series of LEDs.
- Special care taken to make light distribution as uniform as possible.
- Lens material optical grade PMMA with high UV and temperature resistance. Allows use of high current and temperature conditions.

Please find more information about used material from below:

http://ledil.fi/sites/default/files/Documents/Technical/Material/PMMA%20N%20UL94_Yellow%20Card.pdf

<http://ledil.fi/sites/default/files/Documents/Technical/Material/PMMA%20N%20PLEXIGLAS-Datasheet.pdf>

- Optic holder molded by high quality PC material (120 degrees of Celcius / 248 degrees of Fahrenheit).

- Fastening to PCB with appropriate adhesive. By clicking link below you can find Ledil recommended glue options.

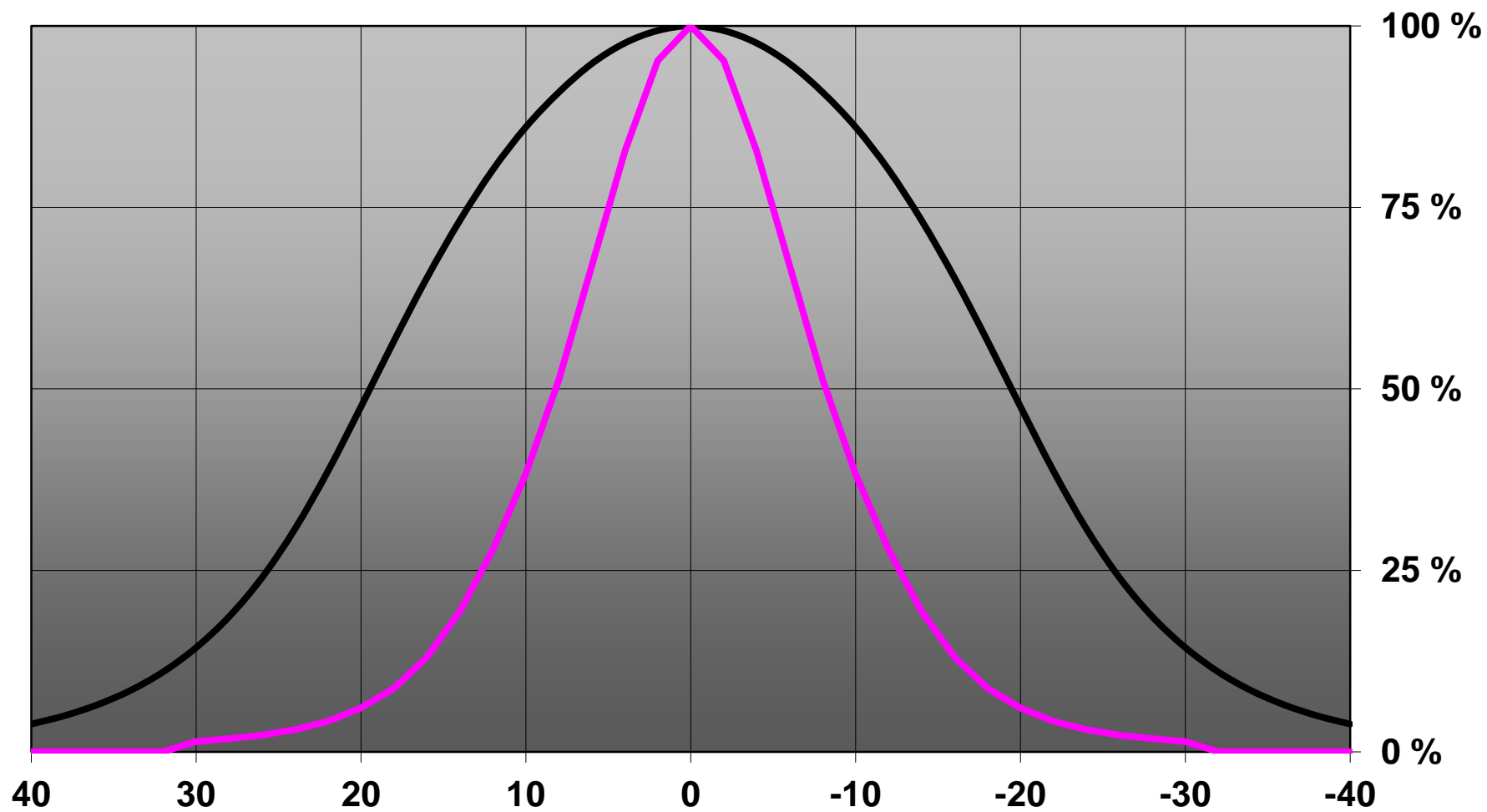
http://www.ledil.com/datasheets/DataSheet_GLUES.pdf

NOTE 1: We advise customer to ensure the suitability and sufficiency of the bond in the end product. For example, mechanical stress, vibration and holes on the surface of the circuit board weaken the strength of the glue.

NOTE 2: All surfaces where glue is applied must be clean, dry and free from grease and dirt. If cleaning of PCB surfaces is needed, please follow strictly the cleaning instructions of your LED manufacturer -this is important as cleaning shall under no circumstances damage LEDs or other electronics components on the PCB.

Further note that optical components shall not be cleaned with any chemicals - only micro fiber cloth may be used to remove fingerprints or other traces from handling.

Relative intensity of FA11102_LZ1-O-90 & P4-07



D

C

B

A

4

4

3

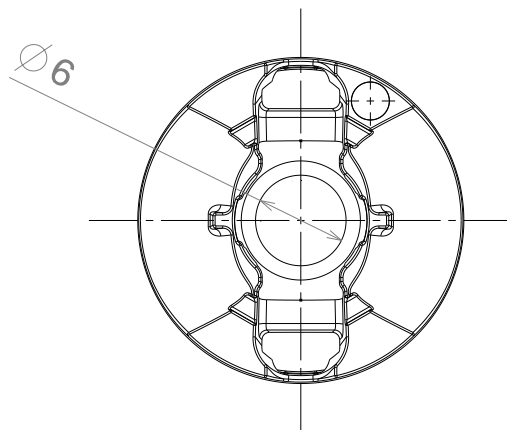
3

2

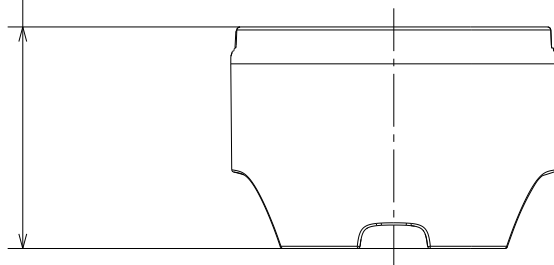
2

1

1

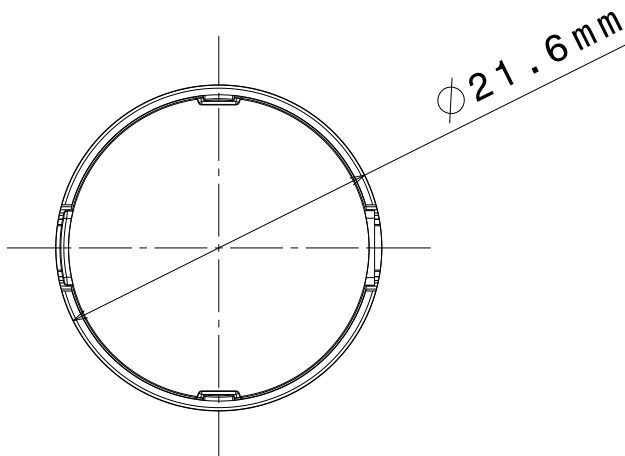


14.65 mm



Part no's :
FA10787_LZI-M
FA10788_LZ1-RS
FA10789_LZ1-Rec
FA10790_LZ1-D

Materials:
Lens PMMA
Holder PC



This drawing is our property.
It can't be reproduced
or communicated without
our written agreement.

LEDIL

Ledil Oy
Tehdaskatu 13
FIN-24100 SALO
Finland

DRAWING TITLE

Datasheet LZ1 Assy

DRAWN BY

pv

DATE

29.05.2009

CHECKED BY

HH

DATE

21.02.2008

DESIGNED BY

HH

DATE

21.02.2008

SIZE

A4

DRAWING NUMBER

REV

0.1

SCALE

2:1

WEIGHT (g)

SHEET

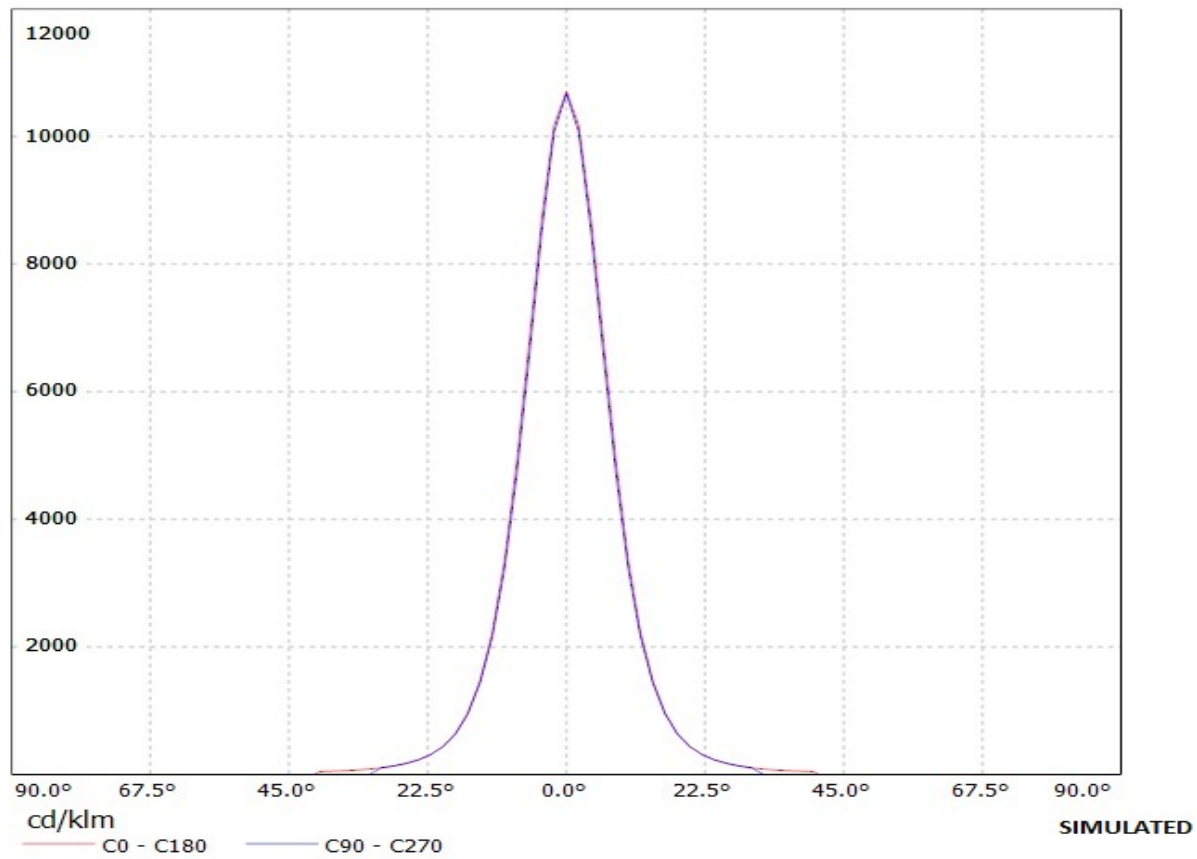
1/1

D

A

Ledil Oy FA10790_LZ1-D FA10790_LZ1-D / LDC (Linear)

Luminaire: Ledil Oy FA10790_LZ1-D FA10790_LZ1-D
Lamps: 1 x SEOUL P4 (white)



Ledil Oy FA10790_LZ1-D FA10790_LZ1-D / LDC (Polar)

Luminaire: Ledil Oy FA10790_LZ1-D FA10790_LZ1-D

Lamps: 1 x SEOUL P4 (white)

