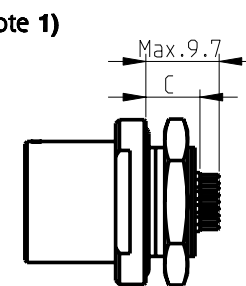
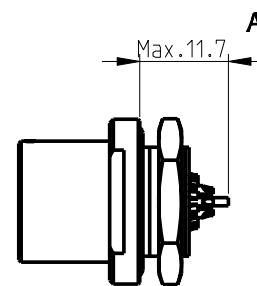
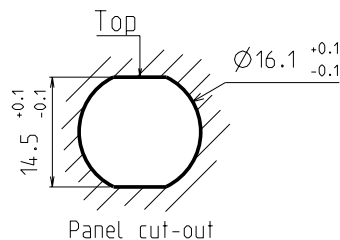
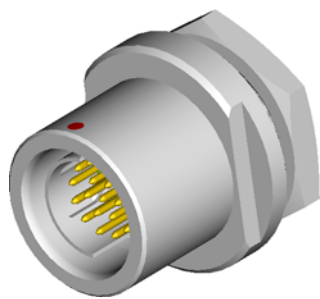
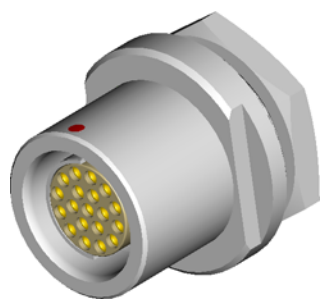


# DBEE/U 104 Multipole Receptacles

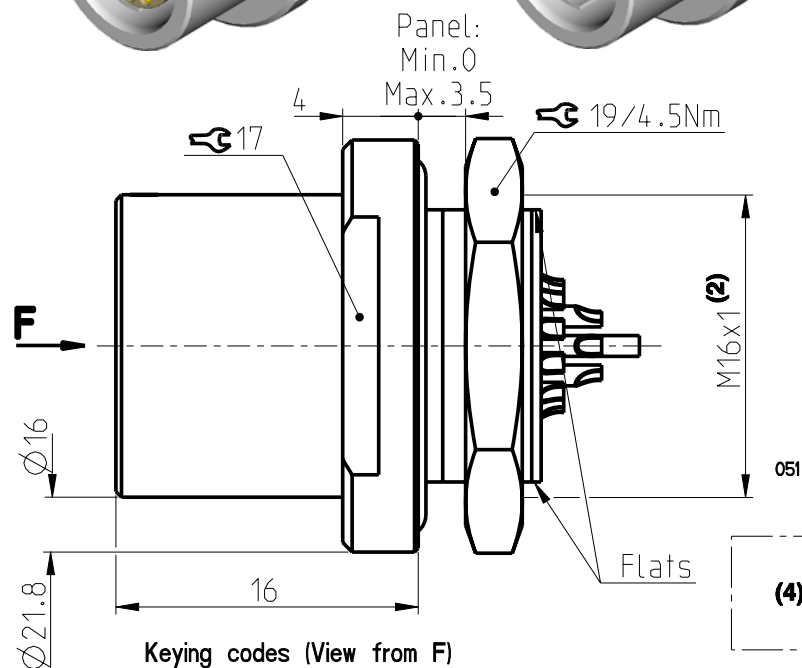
Contact polarity A

Contact polarity Z

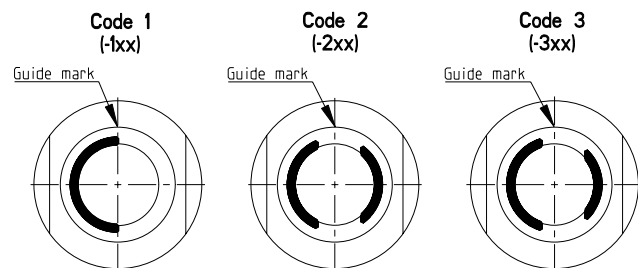


Solder (-x30/-x40)

PCB (-x39/-x49)

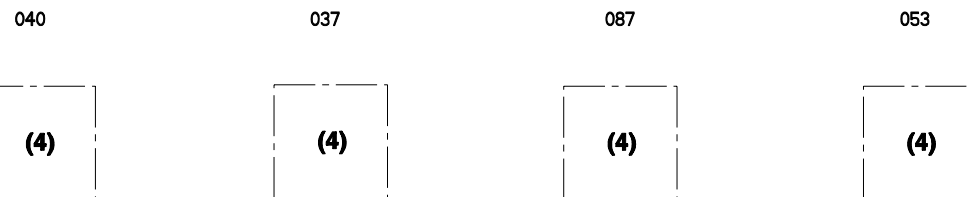


Keying codes (View from F)

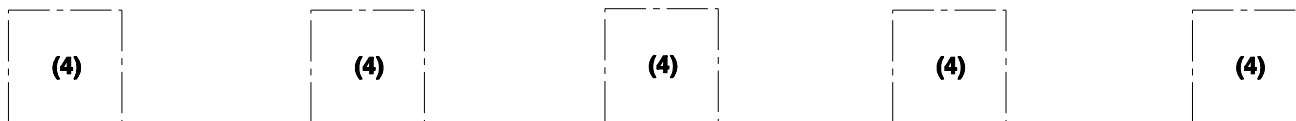


CONTACT CONFIGURATION	Contacts	Solder cup $\phi$		C	PIN $\phi$
104 A 051	2	1.86		-	-
104 A 040	3	1.86		-	-
104 A 037	4	1.18		-	-
104 A 087	4	0.79/2.48		-	-
104 A 053	5	1.18		-	-

Pin layout / PCB hole pattern for polarity A - View from F <sup>(3)</sup>



Polarity Z - View from F



All dimensions in mm

600540

Rev.

1

Pages

1/3

Notes :

- 1) All tolerances resulting from connector assembly are typically  $\pm 0.3$ mm
- 2) If receptacle is screwed directly into threaded hole, oversize thread by  $+0.05$ mm

3) Recommended PCB hole dimensions may be adjusted to application

4) Please contact us

Part number example : DBEE 104 A092-130

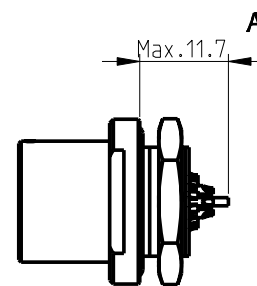
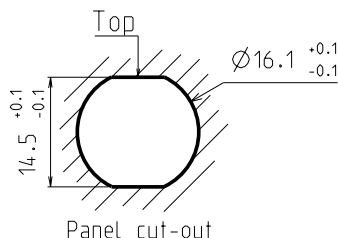
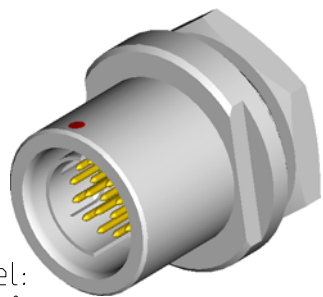
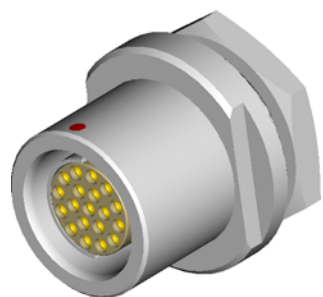


www.fischerconnectors.com

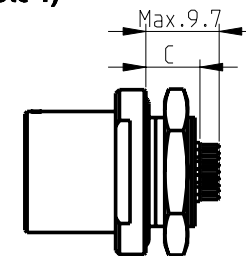
# DBEE/U 104 Multipole Receptacles

Contact polarity A

Contact polarity Z

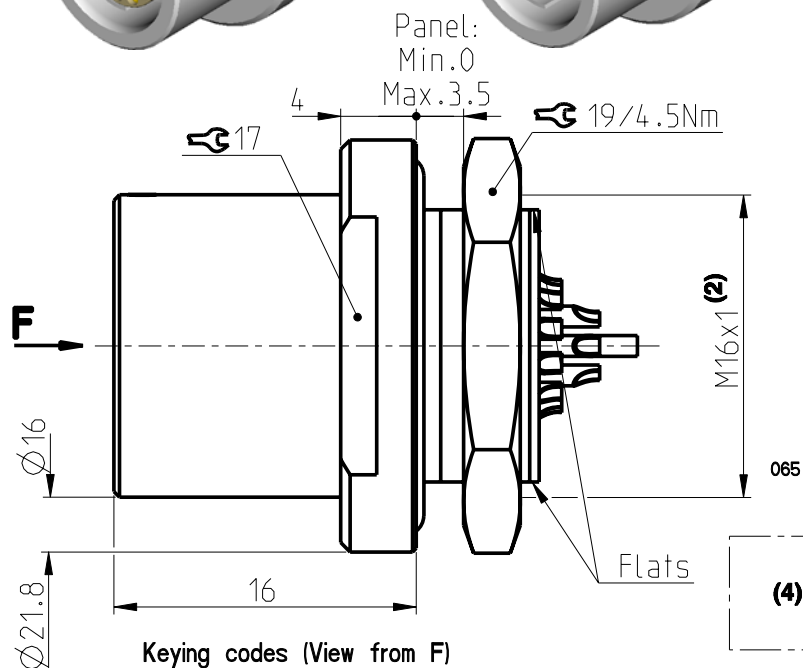


Solder (-x30/-x40)

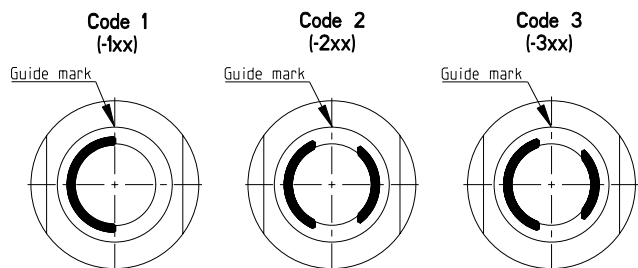


PCB (-x39/-x49)

All dimensions see note 1)



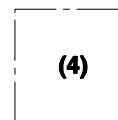
Keying codes (View from F)



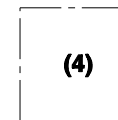
CONTACT CONFIGURATION	Contacts	Solder cup Ø	C	PIN Ø
104 A Z 065	6	0.79	-	-
104 A Z 054	7	0.79	-	-
104 A Z 066	8	0.79	-	-
104 A Z 055	9	0.79/1.18	7.2	0.50
104 A Z 056	11	0.79	7.2	0.50

Pin layout / PCB hole pattern for polarity A - View from F (3)

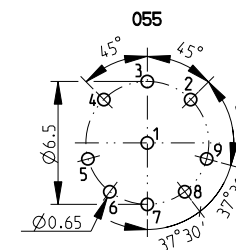
054



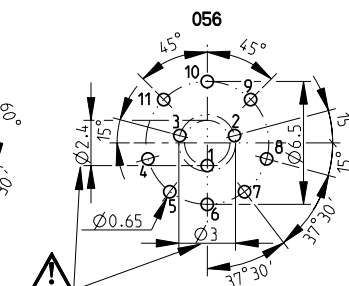
066



055



056



Polarity Z - View from F

(4)

(4)

(4)

(4)

(4)

All dimensions in mm

600540

Rev.

1

Pages

2/3

Notes :

- 1) All tolerances resulting from connector assembly are typically  $\pm 0.3\text{mm}$
- 2) If receptacle is screwed directly into threaded hole, oversize thread by  $+0.05\text{mm}$

3) Recommended PCB hole dimensions may be adjusted to application

4) Please contact us

Part number example : DBEE 104 A092-130

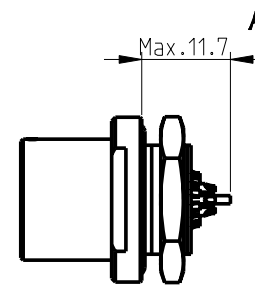
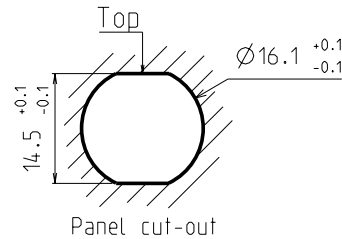
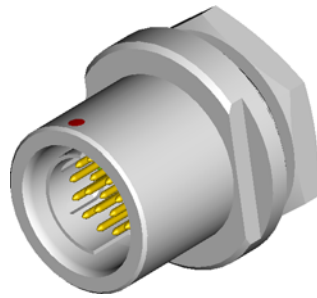
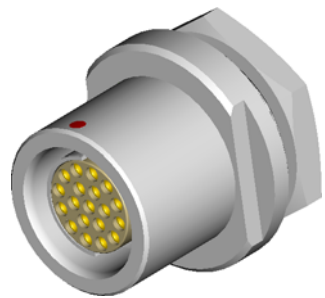
**fischer**

www.fischerconnectors.com

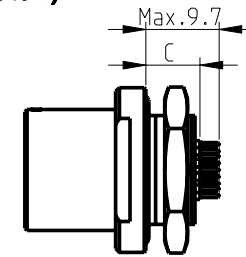
# DBEE/U 104 Multipole Receptacles

Contact polarity A

Contact polarity Z

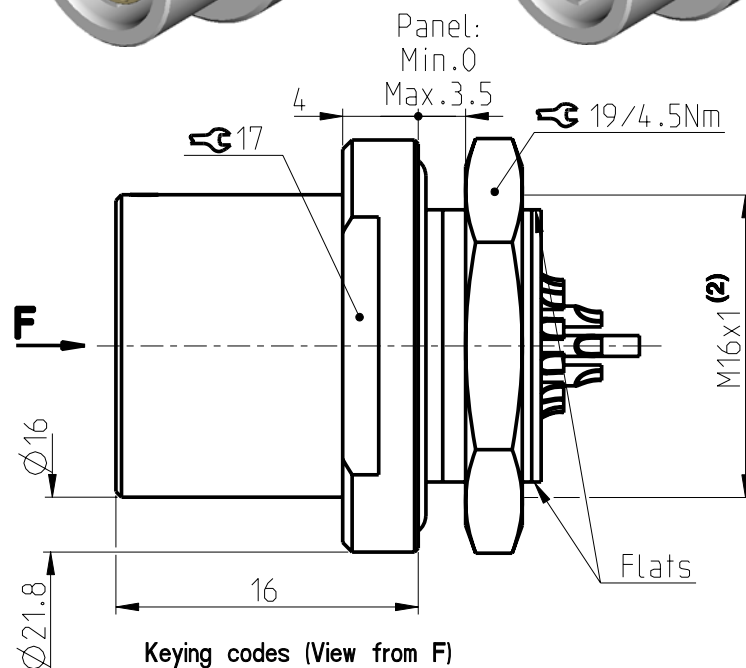


Solder (-x30/-x40)

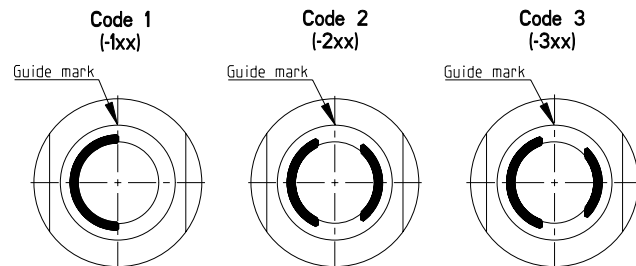


PCB (-x39/-x49)

All dimensions see note 1)



Keying codes (View from F)

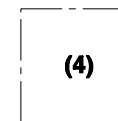


CONTACT CONFIGURATION	Contacts	Solder cup $\phi$	C	PIN $\phi$
104 A Z 086	16	0.79	-	-
104 A Z 092	19	0.79	7.2	0.50
*104 A 124	27	-	-	-

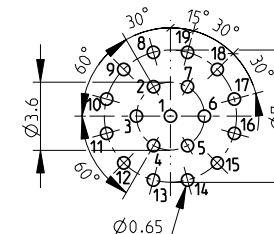
\*Please contact us for additional information

Pin layout / PCB hole pattern for polarity A - View from F <sup>(3)</sup>

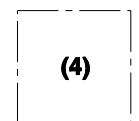
086



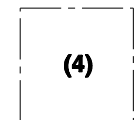
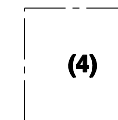
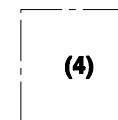
092



124



Polarity Z - View from F



All dimensions in mm

600540

Rev.

1

Pages

3/3

Notes :

- 1) All tolerances resulting from connector assembly are typically  $\pm 0.3$ mm
- 2) If receptacle is screwed directly into threaded hole, oversize thread by  $+0.05$ mm

3) Recommended PCB hole dimensions may be adjusted to application

4) Please contact us

Part number example : DBEE 104 A092-130

**fischer**

www.fischerconnectors.com

Information provided herein is believed to be accurate at time of publishing. Fischer Connectors reserves the right to make modifications on products for continuous improvement without prior notice.