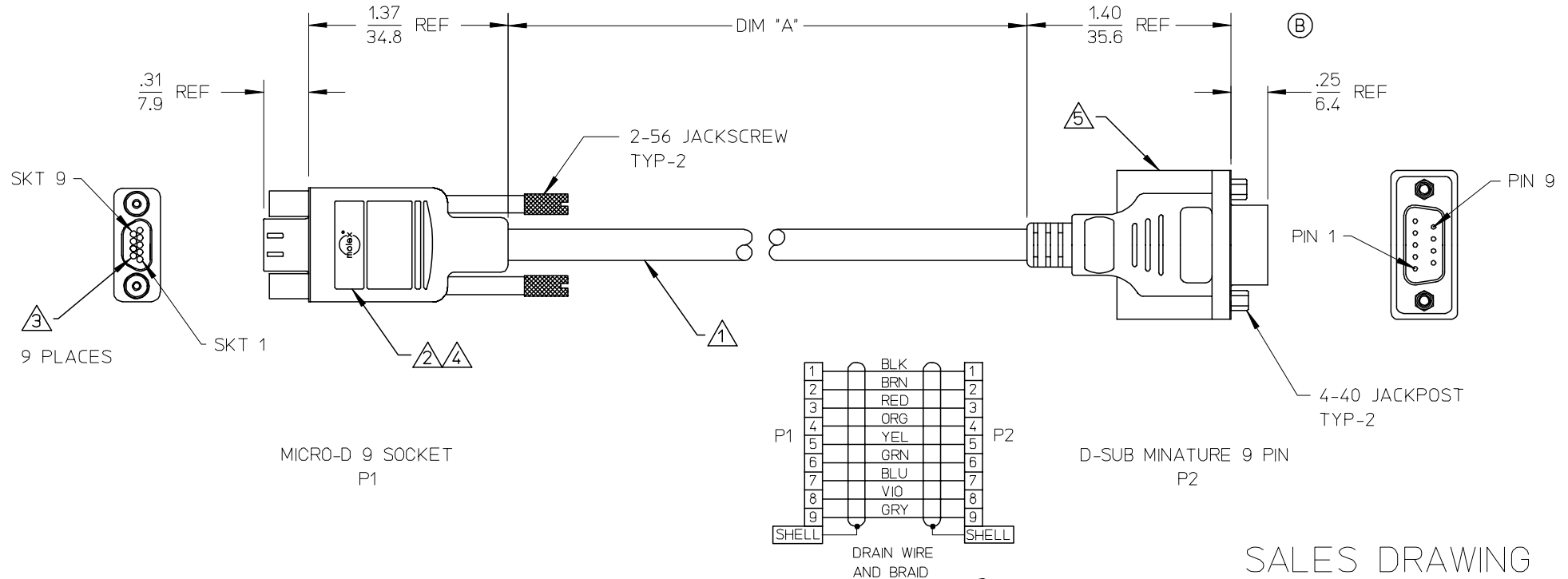


83421

MATERIAL NO.	ENGINEERING NO.	DIM "A" INCH	DIM "A" (mm)
834219207	83421-9207	18.00 +.50 / -0.0	457.2 +12.7 / -0.0
834219208	83421-9208	36.00 +.50 / -0.0	914.4 +12.7 / -0.0
834219209	83421-9209	72.00 +.50 / -0.0	1828.8 +12.7 / -0.0



SALES DRAWING



NOTES: UNLESS OTHERWISE SPECIFIED

- CABLE: UL 2464 28 AWG, 9 CONDUCTOR, TINNED COPPER, 7 STRAND.  
WIRE INSULATION: PVC SHIELD: AL-FOIL / MYLAR, INCLUDING DRAIN  
WIRE & BRAID. OUTER CABLE JACKET: BLACK PVC.
- MOLEX COMMERCIAL MICRO-D # 83421-9014.
- MOLEX TERMINAL SOCKET # 83000-9503, (2,500 PC REEL). TYP-16 PLACES.
- REFER TO PS-83421-9000 FOR PRODUCT SPEC.  
REFER TO DWG. E-83421-001 FOR ASS'Y INSTRUCTIONS.
- D-SUB, 9 PIN MALE CONNECTOR (SOLDER TYPE) WITH OVERMOLDED INSULATOR.
- ALL COMPONENTS ARE RoHS COMPLIANT. (B)

REDRAWN EC NO: ETC2007-0118 DRWN: BONANNO 2006/09/29 CHKD: J. MACNEIL 2006/10/13 APPR: J. MACNEIL 2006/10/13	DESCRIPTION	QUALITY SYMBOLS  ▽=0 ▽=0	GENERAL TOLERANCES (UNLESS SPECIFIED)		DIMENSION STYLE IN/MM		SCALE ---	DESIGN UNITS INCH	THIRD ANGLE PROJECTION	
REV B	DESCRIPTION	QUALITY SYMBOLS  ▽=0 ▽=0	GENERAL TOLERANCES (UNLESS SPECIFIED)		DIMENSION STYLE IN/MM		SCALE ---		DESIGN UNITS INCH	
DRAFT WHERE APPLICABLE MUST REMAIN WITHIN DIMENSIONS		MATERIAL NO.		DOCUMENT NO.		SHEET NO.				
SIZE B		SEE CHART		SD-83421-015		1 OF 1				
THIS DRAWING CONTAINS INFORMATION THAT IS PROPRIETARY TO MOLEX INCORPORATED AND SHOULD NOT BE USED WITHOUT WRITTEN PERMISSION										

 lb\_frame\_B\_P\_ME\_T  
 Rev. E 2006/04/15

CONNECTOR ASSEMBLY INSTRUCTIONS

- 1

SLIDE INSULATOR BOOT OVER CABLE.
- 2

SLIDE CRIMP RING OVER CABLE.  
BRAIDED SHIELD FOLDS BACK OVER CRIMP RING.
- 3

STRIP CABLE PER STRIPPING INSTRUCTIONS. (SH 1&2)
- 4

CRIMP CONTACTS PER CRIMP INSTRUCTIONS. (SH2)  
SEE 638522000 & 638622000 FOR APPLICATOR, TERMINATOR DIE AND CRIMP SPEC..  
SEE 638114800 FOR HAND TOOL AND CRIMP SPEC.
- 5

INSERT CONTACTS INTO BACK OF REAR INSULATOR USING NEEDLE NOSE PLIERS WITH A 3/64in/1MM TIP  
(SPECIAL CARE MUST BE TAKEN NOT TO DAMAGE LOCKING WINGS).  
PUSH CONTACT INTO REAR INSULATOR UNTIL "WINGS" ON CONTACT SNAP OPEN.  
CONTACT SHOULD NOT EXTEND BEYOND THE BACK OF INSULATOR.  
PLACE FRONT INSULATOR ONTO REAR INSULATOR ASSURING PROPER ALIGNMENT OF CONTACTS.  
CONTINUE TO PUSH UNTIL FRONT AND REAR INSULATOR SNAP TOGETHER.  
LIGHTLY PULL CRIMPED WIRE TO ENSURE TERMINAL HAS LOCKED INTO INSULATOR.  
-WARNING PULLING TO HARD CAN DAMAGE CONTACT-
- 6

APPLY ADHESIVE LOCITE 416 OR EQUIVARIANT AROUND EACH WIRE AS SHOWN.  
WHERE WIRE ENTERS INSULATOR
- 7

MOUNT INSULATOR SUBASSEMBLY IN BACKSHELL SUBASSEMBLY  
PER ASSY INSTRUCTION. (SH2)
- 8

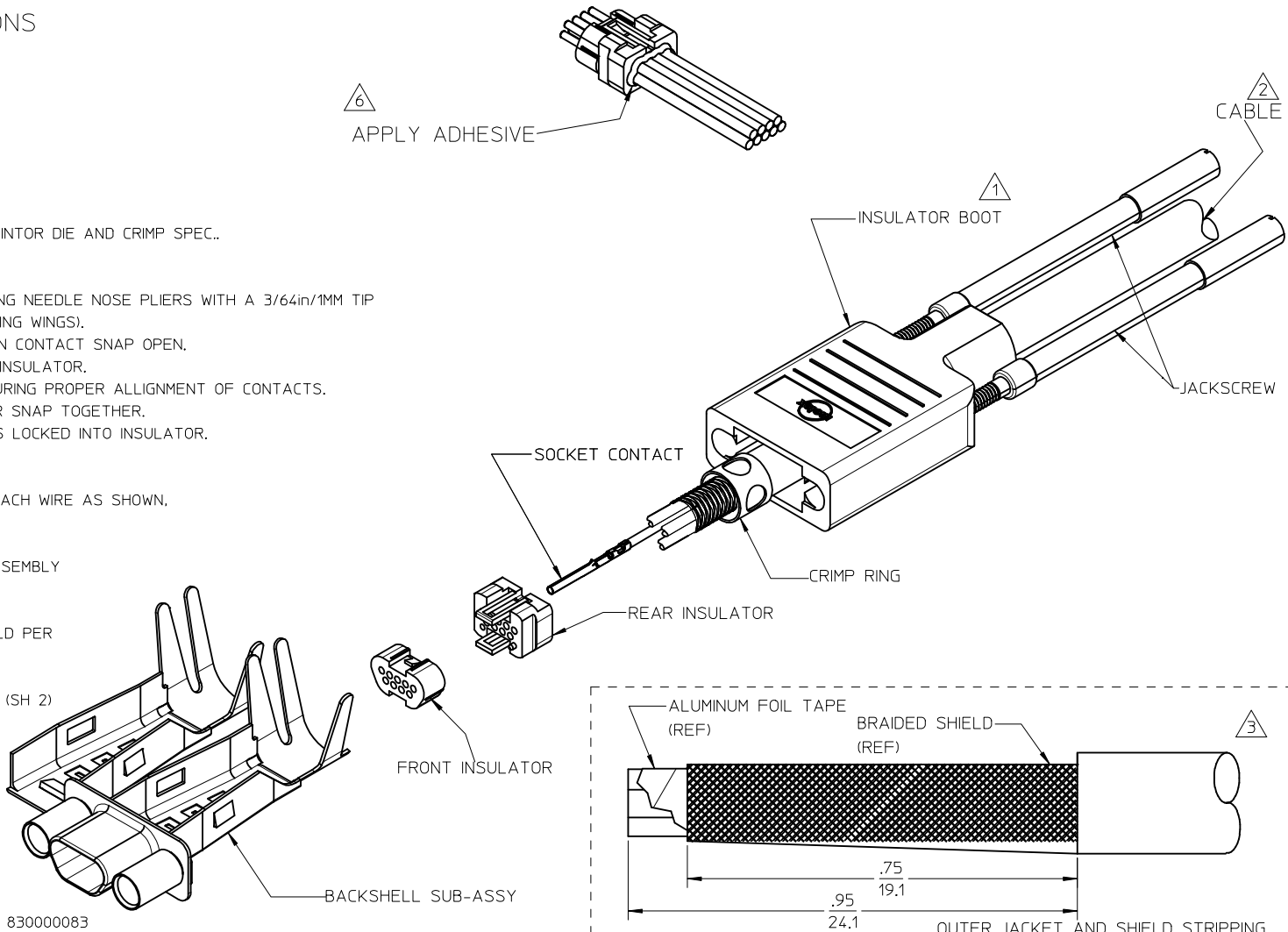
CLOSE BACKSHELL SUBASSEMBLY AROUND CABLE SHIELD PER  
INSTRUCTIONS. (SH 2)
- 9

CRIMP BACKSHELL TO METAL BRAID PER INSTRUCTIONS. (SH 2)  
SEE CRIMP SPEC.
- 10

SLIDE BOOT OVER BACKSHELL SUBASSEMBLY.
- 11

INSERT JACKSCREWS INTO BOOT.
- 12

USE WITH MOLEX TERMINALS 830009502, 830009503 OR 8300000083



9 POSITION SHOWN

ADDED VIEW & NOTE

EC NO: IPG2014-1862

DRWN:GGUSTAFSON 2014/04/25

CHKD:

APPR:BWODMAN 2014/05/09

REV

QUALITY SYMBOLS

▽=0

▽C=0

GENERAL TOLERANCES (UNLESS SPECIFIED)

	mm	INCH
4 PLACES	± ---	± ---
3 PLACES	± ---	± ---
2 PLACES	± ---	± ---
1 PLACE	± ---	± ---
ANGULAR ± ---°		

DRAFT WHERE APPLICABLE  
MUST REMAIN  
WITHIN DIMENSIONS

DIMENSION STYLE

IN/MM

DRAWN BY	DATE
GGUSTAFSON	2014/03/26
CHECKED BY	DATE
APPROVED BY	
DATE	
2014/04/04	
MATERIAL NO.	

SEE CHART

SIZE A3

SCALE

2:1

DESIGN UNITS

INCH

THIRD ANGLE PROJECTION

ASSEMBLY INSTRUCTIONS

COMMERCIAL MICRO D

CONNECTOR

MOLEX

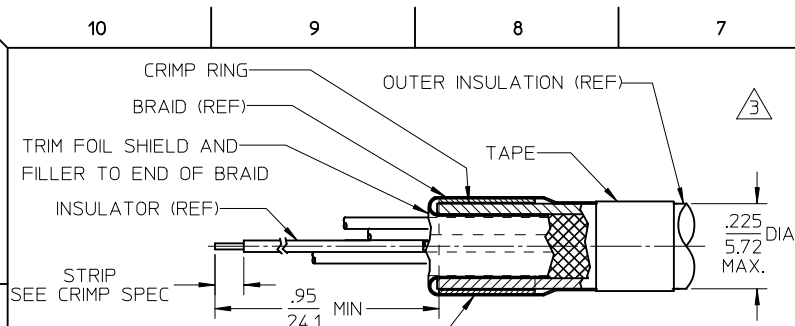
MOLEX INCORPORATED

DOCUMENT NO.

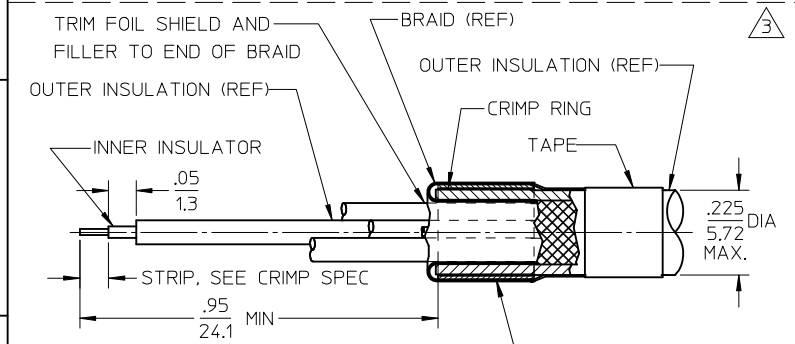
SD-83421-040

SHEET NO.

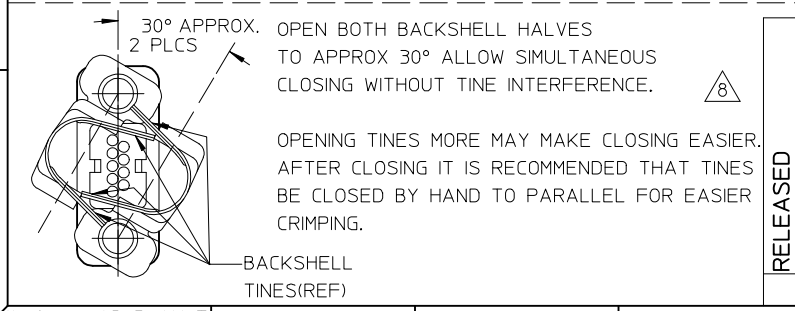
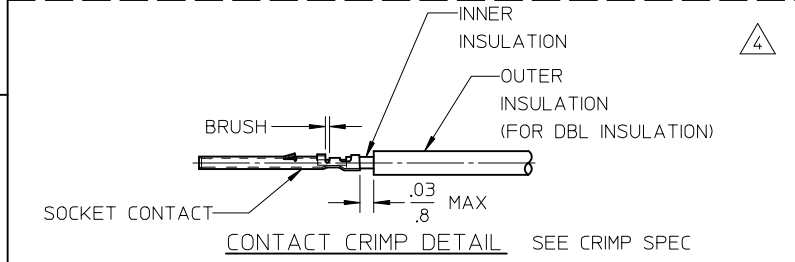
1 OF 2



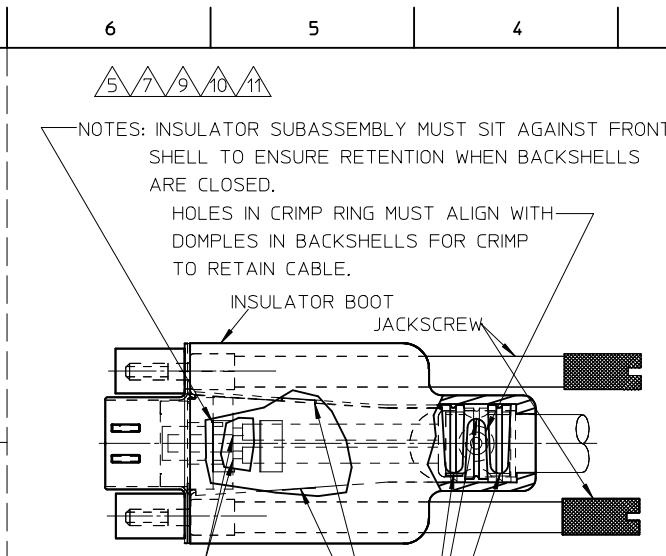
FOLD BRAID BACK OVER CRIMP RING AND COMB EVENLY 360° AROUND RING, PLACE ADHESIVE TAPE AROUND BRAID AS SHOWN  
CONDUCTOR STRIPPING (SINGLE INSULATED WIRE)



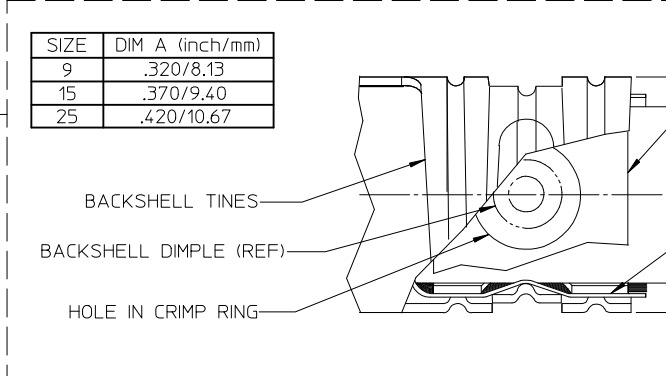
FOLD BRAID BACK OVER CRIMP RING AND COMB EVENLY 360° AROUND RING, PLACE ADHESIVE TAPE AROUND BRAID AS SHOWN.  
CONDUCTOR STRIPPING DOUBLE INSULATED WIRE



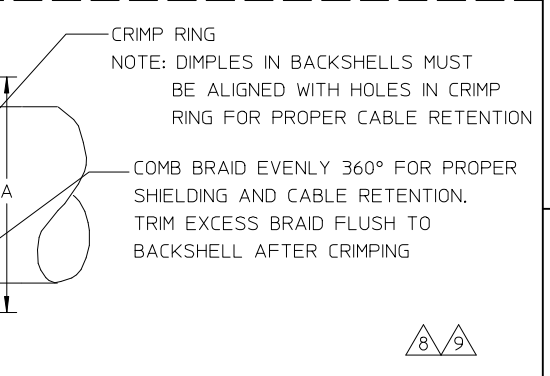
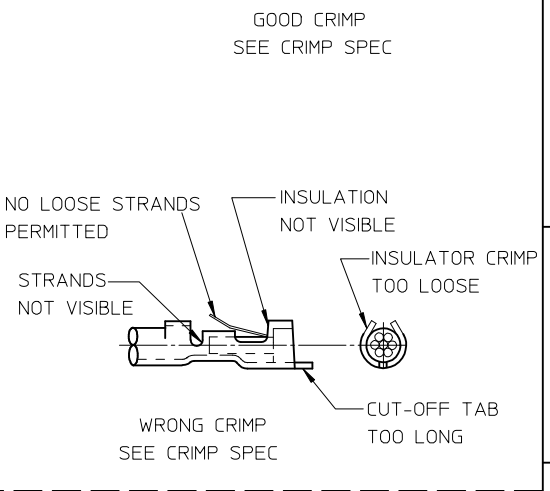
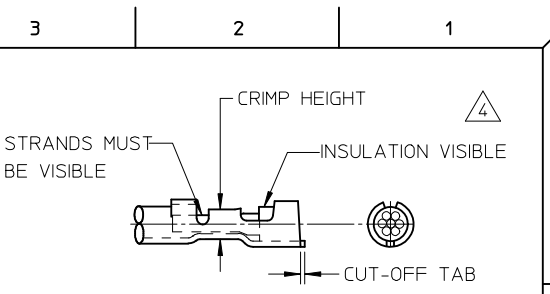
BACKSHELL TINES(REF)



CONTACTS FLUSH TO BELOW INSULATOR USING NEEDLE NOSE PLIERS  
LATCH BOTH BACKSHELLS USING BOTH SIDE LATCHES  
AFTER CRIMPING, TINES SHOULD ALIGN IN THE GROOVE OF THE OPPOSING TINE AS SHOWN



CRIMP RING  
NOTE: DIMPLES IN BACKSHELLS MUST BE ALIGNED WITH HOLES IN CRIMP RING FOR PROPER CABLE RETENTION  
COMB BRAID EVENLY 360° FOR PROPER SHIELDING AND CABLE RETENTION. TRIM EXCESS BRAID FLUSH TO BACKSHELL AFTER CRIMPING



CRIMP RING  
NOTE: DIMPLES IN BACKSHELLS MUST BE ALIGNED WITH HOLES IN CRIMP RING FOR PROPER CABLE RETENTION  
COMB BRAID EVENLY 360° FOR PROPER SHIELDING AND CABLE RETENTION. TRIM EXCESS BRAID FLUSH TO BACKSHELL AFTER CRIMPING

RELEASED  
EC NO: IPG2014-1862  
DRAWN: GUSTAFSON 2014/04/25  
CHKD: BWOODMAN 2014/05/09  
APPR: BWOODMAN 2014/05/09  
DESCRIPTION  
REV

QUALITY SYMBOLS  
▽=0  
▽C=0  
GENERAL TOLERANCES (UNLESS SPECIFIED)  
mm INCH  
4 PLACES ± --- ± ---  
3 PLACES ± --- ± ---  
2 PLACES ± --- ± ---  
1 PLACE ± --- ± ---  
ANGULAR ± ---°  
DRAFT WHERE APPLICABLE MUST REMAIN WITHIN DIMENSIONS

DIMENSION STYLE  
IN/MM  
DRAWN BY GUSTAFSON DATE 2014/03/26  
CHECKED BY DATE  
APPROVED BY BWOODMAN DATE 2014/04/04  
MATERIAL NO.  
SEE CHART

SCALE 2:1  
DESIGN UNITS INCH  
THIRD ANGLE PROJECTION  
TITLE  
ASSEMBLY INSTRUCTIONS  
COMMERCIAL MICRO D  
CONNECTOR  
MOLEX INCORPORATED  
DOCUMENT NO. SD-83421-040  
SHEET NO. 2 OF 2  
THIS DRAWING CONTAINS INFORMATION THAT IS PROPRIETARY TO MOLEX INCORPORATED AND SHOULD NOT BE USED WITHOUT WRITTEN PERMISSION

# Mouser Electronics

Authorized Distributor

Click to View Pricing, Inventory, Delivery & Lifecycle Information:

Molex:

83421-9208