

Accessory Installation

Protective boot

For use with flush, extended and double head pushbutton operators only. To fit, discard pushbutton sealing washer, then pull the rim of the boot skirt over the bezel and flange of the operator and secure operator to panel.

Padlock cover

Fit padlockable cover to operator then fit additional panel seal (supplied) to operator between padlockable cover and panel.

Mechanical push

For use with pushbutton and mushroom operators (except twist to release and key release). To install, cut to desired length and insert into the back of operator.

Operator plug

Used for operating the center block on pushbutton and mushroom operators (except twist to release, key release, and push-push types). To assemble, push plug into the back of the operator. On mushroom operators cut down the plug to 15.2mm (0.62") prior to assembly. Plug is notched to indicate cut down length.

Hole plug

These plugs seal unused 22.5mm openings and include a panel sealing washer to provide Enclosure Ratings 1, 2, 3, 3R, 4, 4X, 12, and 13.

Panel Spacing Mounting Dimensions

Minimum spacings:	mm (inches)	
Size/type of operator	A	B
All types except those listed below	30 (1.18)	50 (1.97)
Lever selector switches and 40mm dia. operators	45 (1.77)	50 (1.97)
50mm dia. operators	55 (2.16)	55 (2.16)
Operators fitted with 70mm dia. legend plate	75 (2.95)	75 (2.95)
Operators fitted with rubber boots or padlockable covers	35 (1.38)	50 (1.97)
Double head pushbutton	30 (1.18)	60 (2.36)
Double head pushbutton with boot	35 (1.38)	60 (2.36)

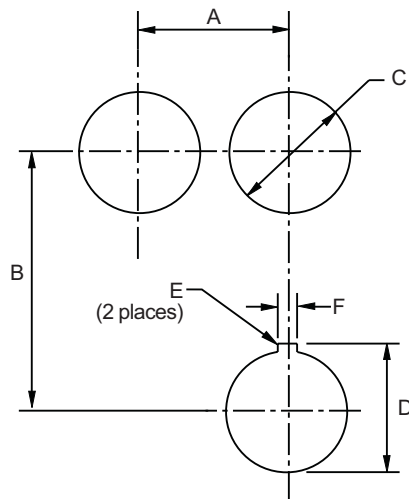
Panel Mounting and Drilling Dimensions

Panel thickness

Maximum 6.35mm (0.25"). Minimum 1mm (0.04"). For each accessory used subtract accessory thickness from 6.35mm (0.25").

Size/type of accessory	Thickness
Legend plate	1.25 (0.05)
Anti-rotation ring	1.5 (0.06)
70mm legend plate	1 (0.04)
Padlockable cover	2.4 (0.09)
Rubber boot	1.3 (0.05)

Panel Spacing and Drilling



Panel Drilling

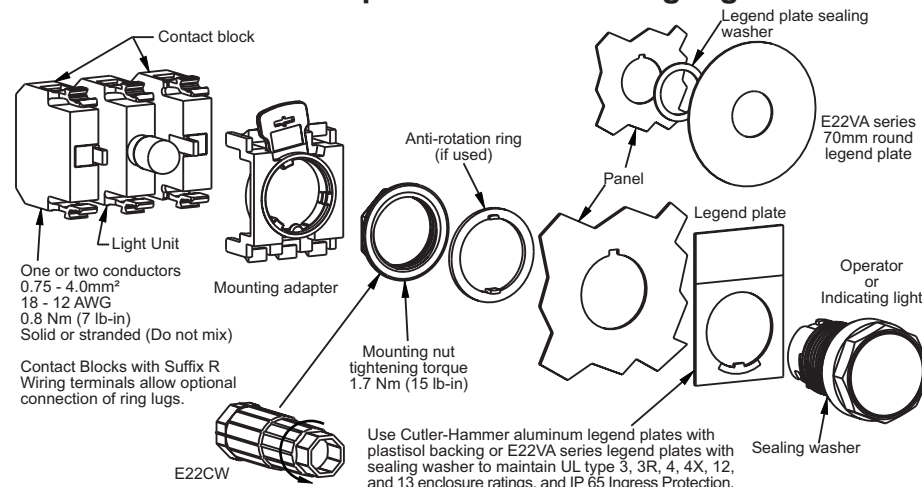
Dimensions	Tolerances
C 22.5 (0.89)	+0.4/-0 (0.016/-0)
D 24.3 (0.96)	+0.4/-0 (0.016/-0)
E R0.8 (R0.03)	≈
F 3.2 (0.125)	+0.2/-0 (0.008/-0)

For additional information, refer to www.cutler-hammer.com

© 2003 Eaton Corporation
All Rights Reserved
Publication No. pub17978
November, 2003

The installation and use of Cutler-Hammer products should be in accordance with the provisions of the U.S. National Electrical Code and/or other local codes or industry standards that are pertinent to the particular end use. Installation or use not in accordance with these codes and standards could be hazardous to personnel and/or equipment.

E22 Plastic Operators & Indicating Lights



UL Listed for use on a flat surface of type 1, 2, 3, 3R, 4, 4X, 12 and 13 enclosures.

NEMA Enclosure Types: 1, 2, 3, 3R, 4, 4X, 12, 13

Double Head Pushbutton:
without boot - NEMA Type 1
with boot - as listed above

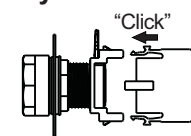
Contact Rating Codes: A600 / Q600
E22BR1 Only: A600 / Q300

IEC 60947-5-1 / EN 60947-5-1
AC 15, DC 13, Pollution Degree 3
Ui = 690 V Uimp = 4KV
Short Circuit Coordination

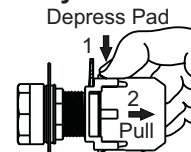
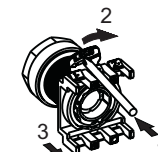
Fuse
GE Power Controls TIA 10
Red Spot Type gG, 10A, 660 VAC
460 VDC, BS88-2, IEC 60269-2-1

Ingress Protection (IEC 60529): IP 65
Double head pushbutton without boot: IP 40
Double head pushbutton with boot: IP 65
Degree of protection against electrical contact (IEC 60529) - IP 2X Fingerproof protection.
Zb (Opposite Polarity)

Assembly



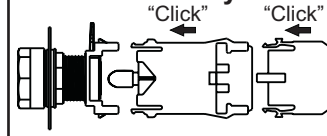
Disassembly



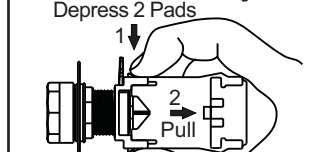
Note: Gently push locking lever and turn as shown over locking "nib"

Transformer Units

Assembly



Disassembly



Note: Do not use E22B4/E22B4R/E22BF4 Contact Blocks with Push-Push Operators.

⚠ WARNING RISK OF ELECTRIC SHOCK Turn power off before wiring and bulb replacement.	⚠ AVERTISSEMENT RISQUE DE CHOC ÉLECTRIQUE Couper l'alimentation électrique avant de câbler ou de remplacer une ampoule.
---	---

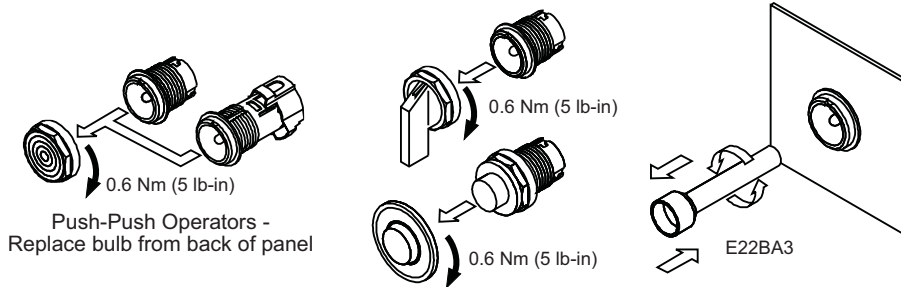
Note: For ease in wiring **two-circuit contact blocks**, wire front terminals (terminals closest to panel) first.

Bulb Replacement - Front of Panel

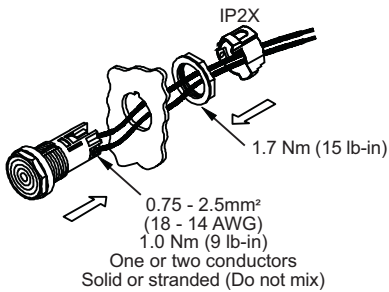
Indicating Lights and Illuminated Pushbuttons

Illuminated Selector Switches and Push/Pull Operators

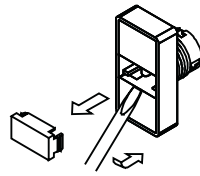
Bulb Removal Tool



Monoblock Indicating Light Wiring and Mounting

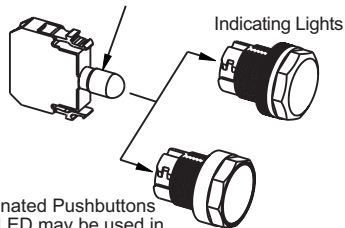


Double Head Pushbutton



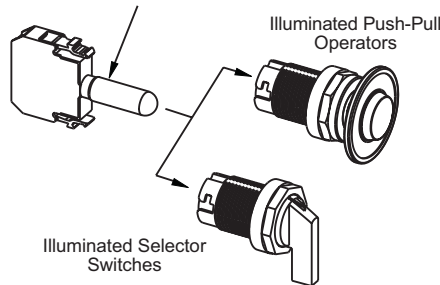
Bulb Type Usage Instructions

Standard Incandescent Bulb / LED



Illuminated Pushbuttons (Tall LED may be used in Push-Push illuminated pushbuttons)

Tall Incandescent Bulb / LED



⚠ CAUTION RISK OF OVERHEATING To avoid damage to Illuminated Operators, do not exceed 60 V, 1.2 W Incandescent Bulb Ratings.	⚠ ATTENTION RISQUE DE SURCHAUFFE Pour éviter d'endommager le dispositif lumineux, ne pas utiliser une ampoule incandescente supérieure à 60 V, 1.2 W.
--	---

Contact Block Selection Charts

2 Position Push Pull Operators

Circuit Configurations (Viewed from front of panel)		Contact Block Mounting Position (Viewed from back of panel)			Contact Arrangement	Contact Block *
Pulled	Pushed	Left 1	Center 3	Right 2		
X	O	■	□	□	12 — 11	E22B1
O	X	■	□	□	14 — 13	E22B2
O	X	■	□	□	14 — 13	E22B11
O	X	■	□	□	12 — 11	E22B20
O	X	■	□	□	14 — 13	E22B20
O	X	■	□	□	14A — 13A	E22B20

3 Position Push Pull Operators

Circuit Configurations (Viewed from front of panel)			Contact Block Mounting Position (Viewed from back of panel)			Contact Arrangement	Contact Block *
Pulled	Central	Pushed	Left 1	Center 3	Right 2		
X	O	O	■	□	□	12 — 11	E22B1
X	O	O	■	□	□	22 — 21	E22B4
X	O	O	■	□	□	12 — 11	E22B1
X	O	O	■	□	□	24 — 23	E22B5

* May include Suffix R

Contact blocks mounted in position 2 (right) produces identical circuit configurations.

Push-Pull operators will accept a maximum of 2 contact blocks.

X = Circuit closed O = Circuit open ■ = Position occupied

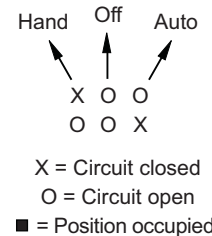
Selector Switch Operators

Circuit Configurations (Viewed from front of panel)			Contact Block Mounting Position (Viewed from back of panel)			Contact Arrangement	Contact Block (May include Suffix R)
2 Position Cam 2			Left 1	Center 3	Right 2		
↕ or ↗							
O X	X O O	X O X	■	□	□	14 — 13	E22B2
X O	O X X	O X O	■	□	□	12 — 11	E22B1
O X	X O O	X O X	■	□	□	14 — 13	E22B11
O X	O X X	O X O	■	□	□	12 — 11	E22B11
O X	X O O	X O X	■	□	□	14 — 13	E22B20
O X	O X X	O X O	■	□	□	14A — 13A	E22B20
O X	O O X	O O X	□	□	■	24 — 23	E22B2
X O	X X O	X X O	□	□	■	22 — 21	E22B1
O X	O O X	O O X	□	□	■	24 — 23	E22B11
O X	X X O	X X O	□	□	■	22 — 21	E22B11
O X	O O X	O O X	□	□	■	24 — 23	E22B20
O X	O O X	O O X	□	□	■	24A — 23A	E22B20
O X	X O O	X O X	■	□	■	14 — 13	E22B11+B1 or E22B12
X O	O X X	O X O	■	□	■	12 — 11	E22B11+B1 or E22B12
O X	O O X	O O X	■	□	■	22 — 21	E22B11+B1 or E22B12
O X	O O X	O O X	■	□	■	24 — 23	E22B11+B1 or E22B12

Explanation of How to Use Selector Switch Contact Block Selection Chart

1. Determine the "X O" sequence you require for your application.

Example:



2. Locate the first sequence "X O O" under column marked Cam 1 or Cam 2, then identify which cam and contact is used and what position it is assembled.
Example: "X O O" uses Cam 1, E22B2, mounting position 1 (left).

3. Repeat for second sequence "O O X". Do not mix sequences from Cam 1 and Cam 2.
Example: "O O X" uses Cam 1, E22B2, mounting position 2 (right).

4. Assemble contact block(s) to adaptor in the mounting position selected (two contact blocks per switch), using the selector switch with the appropriate cam and switch positions. **Cam 1 has one peak, Cam 2 has two peaks, viewed from the back.**

Terminal numbers
These identify the contact position and contact function. Example: 14 — 13
The "1" indicates sequence (position) number 1. Numbers "3 & 4" indicate the circuit is normally open.

NOTE: Do not use 5-way mounting adapter with E22B4/E22B4R/E22BF4 contact blocks, 3-position push-pull operators, E22LTA emergency stop operators, push-push operator or Cam 2 3-position selector switches.