

DESCRIPTION: 0.085 RIBBON - DIP SOLDER

36 PIN
SHOWN

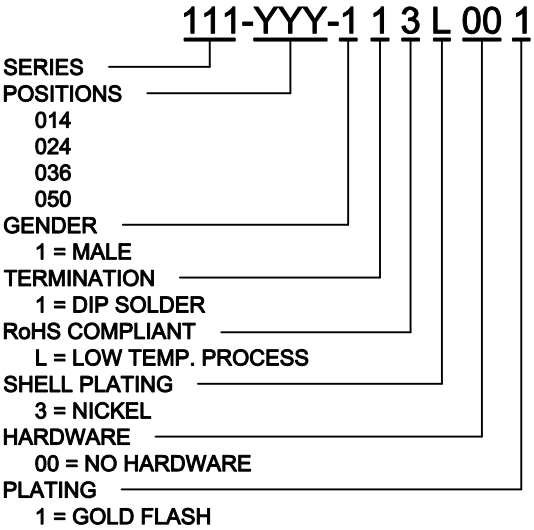
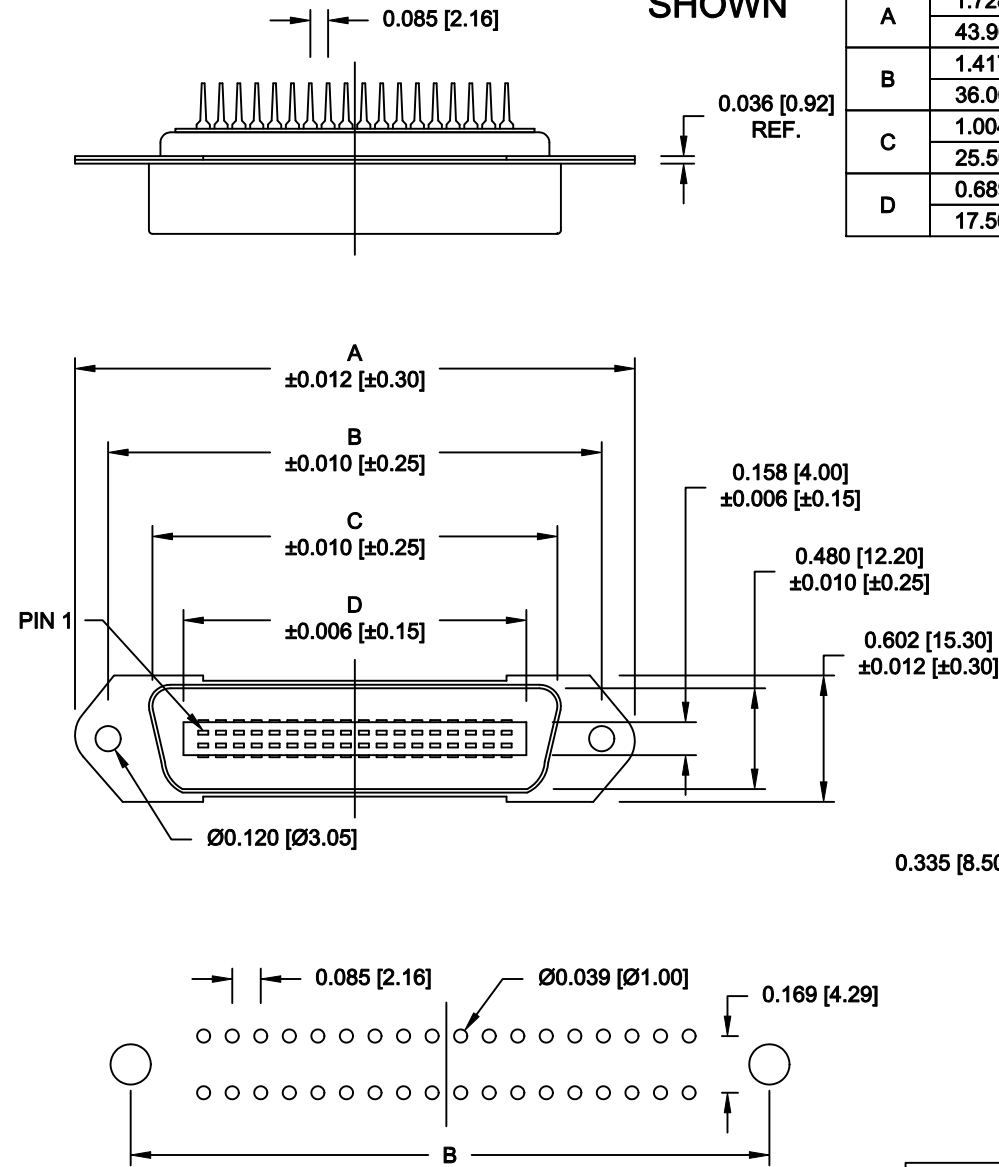
	014	024	036	050
A	1.728	2.154	2.667	3.272
	43.90	54.70	67.75	83.10
B	1.417	1.843	2.352	2.947
	36.00	46.80	59.74	74.85
C	1.004	1.429	1.929	2.538
	25.50	36.30	49.00	64.47
D	0.689	1.102	1.634	2.207
	17.50	28.00	41.50	56.05

MATERIAL:

INSULATION: PBT - UL 94V-0 RATED
CONTACTS: PHOSPHOR BRONZE
CONTACT PLATING: GOLD FLASH IN THE MATING AREA
BRIGHT TIN IN THE SOLDER AREA
SHELL: STEEL, NICKEL PLATED

ELECTRICAL:


CURRENT RATING: 1 AMPS
VOLTAGE RATING: 1,000V AC r.m.s.
INSULATION RESISTANCE: 1,000MegOhms Min. @ 500VDC
CONTACT RESISTANCE: 30Milliohms Max.
OPERATING TEMPERATURE: -55°C TO +125°C



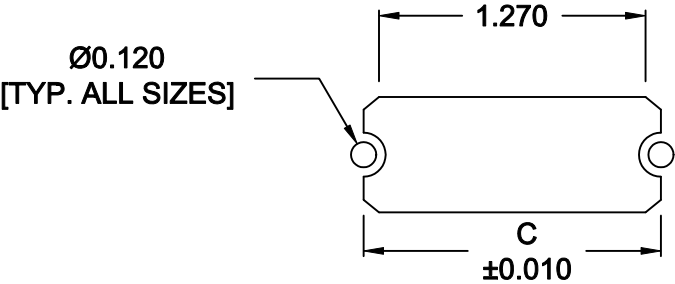
RECOMMENDED PCB LAYOUT
SCALE = 2 : 1

RoHS COMPLIANT

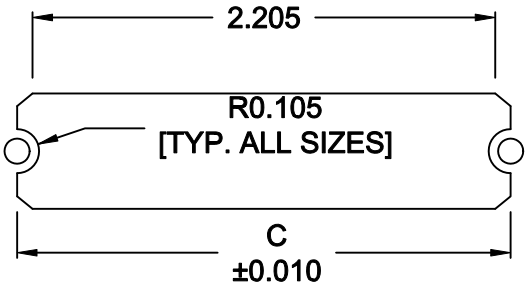
DO NOT SCALE FROM DRAWING

	THESE DRAWINGS AND SPECIFICATIONS ARE THE PROPERTY OF NorComp AND SHALL NOT BE REPRODUCED, COPIED OR USED AS THE BASIS FOR THE MANUFACTURE OF SALE OF APPARATUS WITHOUT WRITTEN PERMISSION.	DRAWN: WAYNE ROBBINS		DATE: 09-21-98	
		CHECKED:		DATE:	
NorComp	SCALE: 1 : 1		SHEET 1		OF 2
			REV 10		
			DWG NO. 111-YYY-113L001		

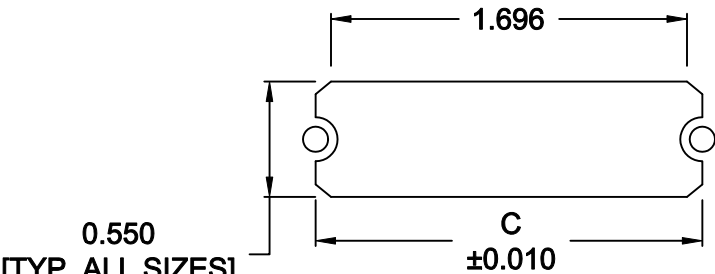
	014	024	036	050
C	1.417	1.843	2.352	2.947
	36.00	46.80	59.74	74.85



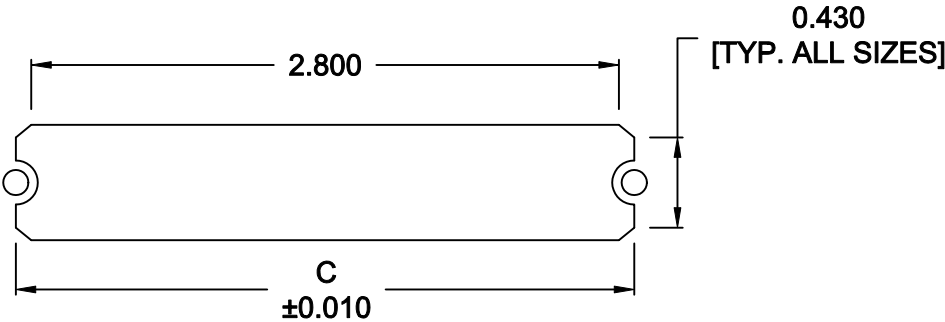
14 POSITION



36 POSITION



24 POSITION




50 POSITION

NOTEDIMENSION "C" =
CENTER TO CENTER OF MOUNTING HOLES
CENTER OF RADI
OVERALL LENGTH OF CUTOUT

RoHS COMPLIANT

DO NOT SCALE FROM DRAWING

	THESE DRAWINGS AND SPECIFICATIONS ARE THE PROPERTY OF NorComp AND SHALL NOT BE REPRODUCED, COPIED OR USED AS THE BASIS FOR THE MANUFACTURE OF SALE OF APPARATUS WITHOUT WRITTEN PERMISSION.	DRAWN: M. SIGMON		DATE: 01-14-11	
		CHECKED:		DATE:	
<h1>NorComp</h1>	SCALE: NONE		SHEET 2		OF 2
	DWG NO.		111-YYY-113L001		
		REV 10			