

C&K L Series Miniature Slide Switches

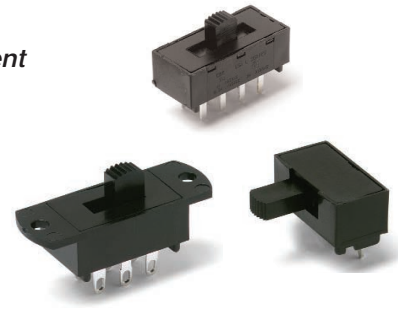
Features/Benefits

- Positive detent
- Enclosed housing
- Maintained and momentary functions
- PC and panel mounting



Typical Applications

- Communications equipment
- Lighting devices



Specifications

CONTACT RATING: Q contact material (LX0X, LX1X Models): 4 AMPS @ 125 V AC or 28 V DC; 2 AMPS @ 250 V AC; 0.5 AMP @ 125 V DC (UL/CSA). See page I-23 for additional ratings.

ELECTRICAL LIFE: 10,000 make-and-break cycles at full load.

CONTACT RESISTANCE: Below 10 m Ω typ. initial @ 2-4 V DC, 100 mA, for both silver and gold plated contacts.

INSULATION RESISTANCE: $10^9 \Omega$ min.

DIELECTRIC STRENGTH: 1,000 Vrms min. @ sea level.

NOTE: Specifications and materials listed above are for switches with standard options. For information on specific and custom switches, consult Customer Service Center.

Materials

HOUSING: 6/6 nylon (UL94V-2), black.

ACTUATOR: 6/6 nylon (UL94V-2), black.
'13' actuator, natural (standard).

CONTACTS: Q contact material: Copper, silver plated. See page I-23 for additional contact materials.

TERMINALS: Q contact material: Copper, silver plated. See page I-23 for additional contact materials.

CONTACT SPRING: Music wire or stainless steel.

TERMINAL SEAL: Epoxy.



Slide

Build-A-Switch

To order, simply select desired option from each category and place in the appropriate box. Available options are shown and described on pages I-20 thru I-23. For additional options not shown in catalog, consult Customer Service Center.

<div style="display: flex; justify-content: space-around; align-items: center;"> <div style="border: 1px solid black; width: 20px; height: 20px; margin: 2px;"></div> <div style="border: 1px solid black; width: 20px; height: 20px; margin: 2px;"></div> <div style="border: 1px solid black; width: 20px; height: 20px; margin: 2px;"></div> <div style="border: 1px solid black; width: 20px; height: 20px; margin: 2px;"></div> <div style="border: 1px solid black; width: 20px; height: 20px; margin: 2px;"></div> <div style="border: 1px solid black; width: 20px; height: 20px; margin: 2px;"></div> <div style="border: 1px solid black; width: 20px; height: 20px; margin: 2px;"></div> <div style="border: 1px solid black; width: 20px; height: 20px; margin: 2px;"></div> <div style="border: 1px solid black; width: 20px; height: 20px; margin: 2px;"></div> <div style="border: 1px solid black; width: 20px; height: 20px; margin: 2px;"></div> </div>			
Switch Function L202 (STD.) DPDT L203 (STD.) DP3T L101 SPST L102 SPDT L103 SP3T L104 SP4T L112 SPDT, mom. L113 SP3T, mom. to one end L123 SP3T, mom. to both ends L201 DPST L204 DP4T L212 DPDT, mom.	Actuator 01 (STD.) .200" high 02 .335" high 03 .375" high 05 .312" high 11 .100" high 12 Screwdriver slot 13 Plunger without cap 14 Plunger with .200" dia. cap 15 Plunger with .310" dia. cap 17 Plunger with .458" dia. cap 19 Plunger with .590" dia. cap Detent 1 (STD.) With detent 2 Without detent Mounting Style MS (STD.) PC Thru-hole MA Right angle, PC thru-hole ML Right angle, PC thru-hole MV Right angle, PC thru-hole SS Panel with mounting ears TS Panel with integral mounting ears	Terminations 02 (STD.) PC Thru-hole 01 Solder lug with notch 03 Solder lug with hole 04 PC Thru-hole 10 PC Thru-hole 06 Wire wrap 12 PC Thru-hole WC Wire lead	Contact Material Q (STD.) Silver B Gold G Gold over silver Seal NONE (STD.) No seal E Epoxy seal Cap Color 2 (STD.) Black NONE No cap 3 Red

C&K L Series Miniature Slide Switches

SWITCH AND LOCK FUNCTION



NO. POLES	MODEL NO.	SWITCH FUNCTION	SCHEMATIC	AVAILABLE MOUNTING STYLES
SP	L101	SPST		ML, MS, SS
	L102	SPDT		ML, MS, SS
	L112	SPDT-MOM.		ML
	L103	SP3T		MA, MS, TS
	L113	SP3T-MOM. to one end		MA, MS, TS
	L123	SP3T-MOM. to both ends		MA, MS, TS
	L104	SP4T		MS

NO. POLES	MODEL NO.	SWITCH FUNCTION	SCHEMATIC	AVAILABLE MOUNTING STYLES
DP	L201	DPST		MA, MS, SS
	L202 (STD.)	DPDT		MA, MS, SS
	L212	DPDT-MOM.		MV
	L203 (STD.)	DP3T		MS, TS
	L204	DP4T		MS

NOTE: and MOM. in table indicates momentary action.

All models with all options when ordered with 'G' or 'Q' contact material.

Models with '01' termination option only.

Contacts make on side actuator throw.

ACTUATOR



ACTUATOR OPTIONS FOR 'MS, MA, ML, SS, & TS' MOUNTING STYLES

01 (STD.) .200" HIGH	02 .335" HIGH	03 .375" HIGH	05 .312" HIGH	11 .100" HIGH	12 SCREWDRIVER SLOT

NOTE: No actuator color option code is required. Standard actuator color is black, other colors and heights available, consult Customer Service Center. See pages I-21 and I-22 for available mounting styles.

ACTUATOR OPTIONS FOR 'MV' MOUNTING STYLE

13 (STD.) PLUNGER WITHOUT CAP	14 PLUNGER WITH CAP	15 PLUNGER WITH CAP
17 PLUNGER WITH CAP	19 PLUNGER WITH CAP	

OPTION CODE	ACTUATOR CAP COLORS
2	(STD.) BLACK
NONE	01-13, 23 ACTUATORS
3	RED

Other colors available, consult Customer Service Center.

ACTUATOR CAPS

Caps supplied are not installed standard. To order actuator options '14 thru 29,' select desired cap color from chart and place option code in last box of ordering format. Leave box empty for all other actuator options. Caps may also be ordered separately and user installed, see pages I-23 and I-24. Specify the four digit part number and desired cap color. For switches without caps, order '13' or '23' actuator option. Cap finish: gloss (excluding square cap part number 7982, finish: matte).

SPLASH CAPS

New protective splash caps for PC mounted slide switches are available separately and reusable. They provide splash protection during soldering and cleaning processes. To order specify correct part number, see page I-24.



Third Angle
Projection

Dimensions are shown: IN (mm)
Dimensions subject to change

C&K L Series Miniature Slide Switches

DETENT

1 (STD.) WITH DETENT

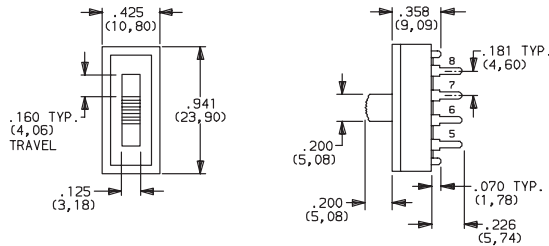
Standard with all maintained models: L101, L102, L103, L104, L113, L201, L202, L203, L204, L161, L162, L261 and L262.

2 (STD.) WITHOUT DETENT

Standard with all momentary models: L112, L123, L211, and L212.

MOUNTING STYLE

MS (STD.) PC THRU-HOLE



AVAILABLE WITH:

Models: L101, L102, L112, L103, L113, L123, L201, L202, L203, L104 and L204

Terminations: 01, 02, 03, 06, 10 and 12

Actuators: 01, 02, 03, 05, 09, 11 and 12

PC MOUNTING

For mounting information, see TERMINATIONS section, page I-22.

Splash caps are available separately and reusable, see page I-24.

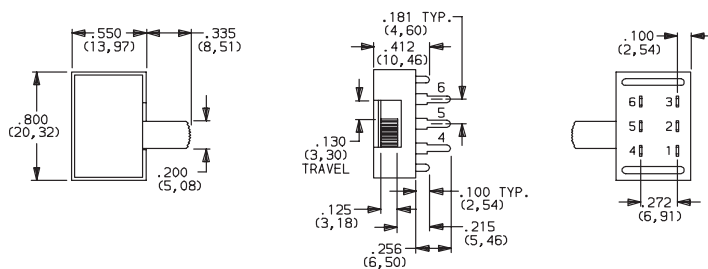


L203011MS02Q
DP3T



Slide

MA RIGHT ANGLE, PC THRU-HOLE



AVAILABLE WITH:

Models: L201, L202, L113 and L123

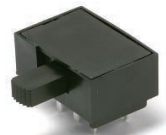
Terminations: 04

Actuators: 02 and 12

PC MOUNTING

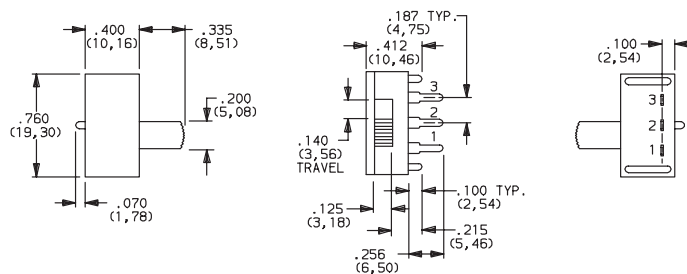
For mounting information, see TERMINATIONS section, page I-22.

Splash caps are available separately and reusable, see page I-24.



L202021MA04Q
Horizontal Actuation
DPDT

ML RIGHT ANGLE, PC THRU-HOLE



AVAILABLE WITH:

Models: L201, L202, L113 and L123

Terminations: 04

Actuators: 02 and 12

PC MOUNTING

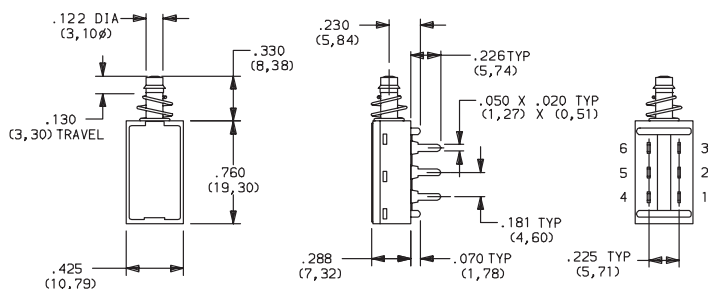
For mounting information, see TERMINATIONS section, page I-22.

Splash caps are available separately and reusable, see page I-24.



L102021ML04Q
Horizontal Actuation
SPDT

MV RIGHT ANGLE, PC THRU-HOLE



AVAILABLE WITH:

Models: L112 and L212

Terminations: 02, 06, 10 and 12

Actuators: 13 thru 19

PC MOUNTING

For mounting information, see TERMINATIONS section, page I-22.

Splash caps are available separately and reusable, see page I-24.



L1212132MV02Q
DPDT

C&K L Series Miniature Slide Switches

CONTACT MATERIAL


OPTION CODE	CONTACT AND TERMINAL MATERIAL	RATINGS	
Q (STD.)	SILVER ²	POWER	LX0X, LX1X MODELS: 4 AMPS @ 125 V AC or 28 V DC; 2 AMPS @ 250 V AC; 0.5 AMP @ 125 V DC (UL/CSA). LX6X MODELS: 4 AMPS @ 125 V AC or 28 V DC; 2 AMPS @ 250 V AC (UL/CSA).
B	GOLD ¹	LOW LEVEL/DRY CIRCUIT	0.4 VA MAX. @20 V AC OR DC max.
G	GOLD OVER SILVER ³	LOW LEVEL/DRY CIRCUIT OR POWER	LX0X, LX1X MODELS: 0.4 VA MAX. @ 20 V AC or DC MAX. or 4 AMPS @ 125 V AC or 28 V DC; 2 AMPS @ 250 V AC; 0.5 AMP @ 125 V DC (UL/CSA). LX6X MODELS: 0.4 VA MAX. @ 20 V AC or DC MAX. or 4 AMPS @ 125 V AC or 28 V DC; 2 AMPS @ 250 V AC (UL/CSA).


CONTACT MATERIAL/APPLICATION RECOMMENDATIONS—SEE SECTION N.

¹ CONTACTS & TERMINALS: Copper, with gold plate over nickel plate.

² CONTACTS & TERMINALS: Copper, silver plated (standard with all termination options).

³ CONTACTS & TERMINALS: Copper, with gold plate over nickel plate over silver plate.

All models  with all options (except '01' termination) when ordered with 'G' or 'Q' contact material.

Models with '01' termination option  only.

NOTE: 'G' contact material is equivalent to both 'B' and 'Q' contact materials.

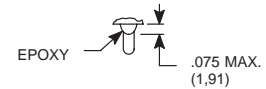


Slide

SEAL

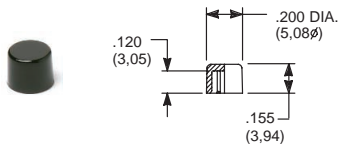
NONE (STD.) NO SEAL

E EPOXY SEAL



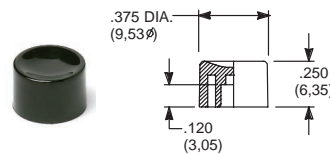
AVAILABLE HARDWARE

Cap
Compatible with 13-19 actuators



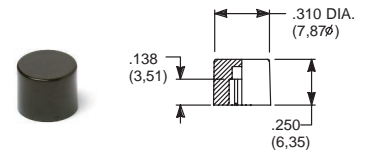
PART NO.
708902000 BLACK
708903000 RED
Material: Nylon
Finish: Gloss

Cap
Compatible with 13-19 actuators



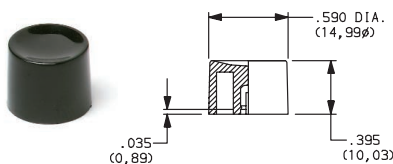
PART NO.
752702000 BLACK
752703000 RED
Material: Nylon
Finish: Gloss

Cap
Compatible with 13-19 actuators



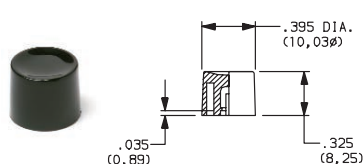
PART NO.
801802000 BLACK
801803000 RED
Material: Nylon
Finish: Gloss

Cap
Compatible with 13-19 actuators



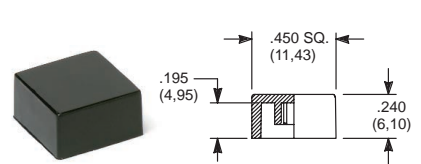
PART NO.
894002000 BLACK
894003000 RED
Material: Nylon
Finish: Gloss

Cap
Compatible with 13-19 actuators



PART NO.
894102000 BLACK
894103000 RED
Material: Nylon
Finish: Gloss

Cap
Compatible with 13-19 actuators



PART NO.
484602000 BLACK
484603000 RED
Material: Nylon
Finish: Gloss

PART NO.
798202263 BLACK
798203000 RED
Material: Nylon
Finish: Matte

C&K L Series Miniature Slide Switches




Slide

AVAILABLE HARDWARE		
<div>Cap</div> <div>Compatible with 01-05 actuators</div> <div>   </div> <div> <div>PART NO.</div> <div>120100602</div> <div>BLACK</div> </div> <div> <div>Material: Nylon</div> <div>Finish: Matte</div> </div>	<div>Splash Cap</div> <div>  <div>Fits 'MS' mounting style, LXX1 & LXX2 models only.</div> </div> <div> <div>PART NO.</div> <div>120100200</div> <div></div> </div> <div> <div>Material: Nylon</div> </div>	<div>Splash Cap</div> <div>  <div>Fits 'MV' mounting style, LX1X models only.</div> </div> <div> <div>PART NO.</div> <div>120100300</div> <div></div> </div> <div> <div>Material: Nylon</div> </div>
<div>Splash Cap</div> <div>  <div>Fits 'MA' mounting style, LXX3 models only.</div> </div> <div> <div>PART NO.</div> <div>120100400</div> <div></div> </div> <div> <div>Material: Nylon</div> </div>	<div>NOTE: Other colors available, consult Customer Service Center.</div>	

Mouser Electronics

Authorized Distributor

Click to View Pricing, Inventory, Delivery & Lifecycle Information:

C&K Components:

[L102021ML04Q](#) [L112152MV02Q2](#) [L102011MS02Q](#) [L102121SS03Q](#)