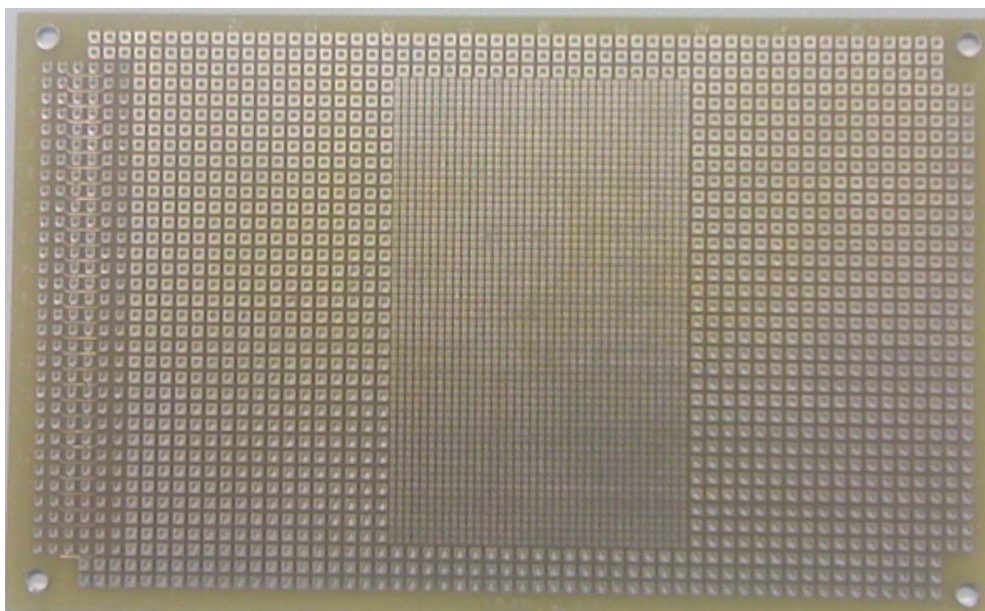




www.cif.fr

Test boards for SMD components 2 face FR4 35 μ m

AL436



This document contains manufacturer's information, protected through copyright. All rights reserved. This document can not be copied, reproduced or translated without written agreement from **C.I.F**

Information contained in this document can be modified without any prior notice

Characteristics

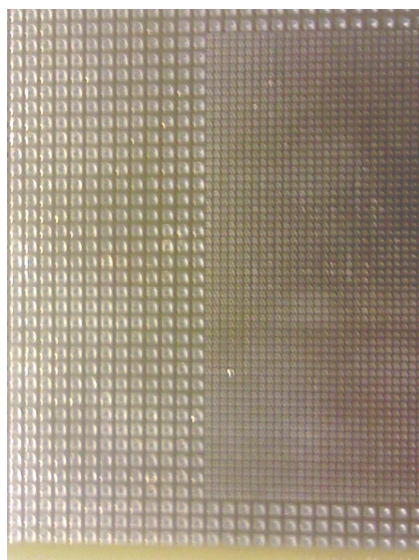
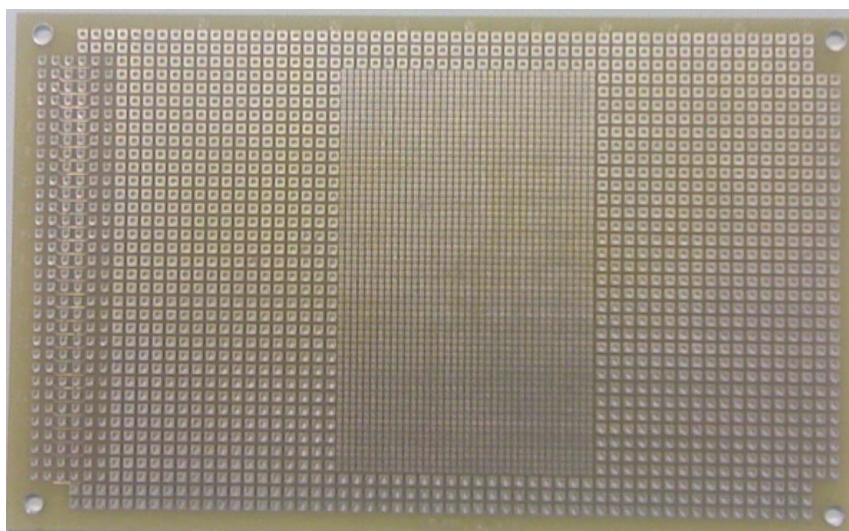
AL 436 - Epoxy thickness: 1,5 mm.

40 x 60 SMT pads 1 mm² drilled at 0,35 mm 1,27 mm pitch on each side.

Pads at 2,54 mm pitch x 32 pads 2 mm²

drilled at 1,0 mm. Connector DIN 41612 C.

Holes fully plated.



cif@cif.fr