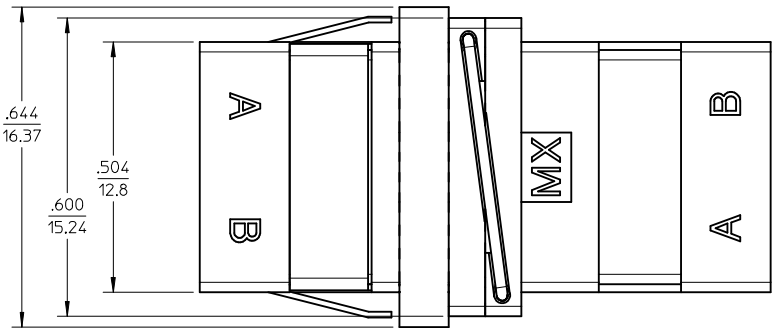
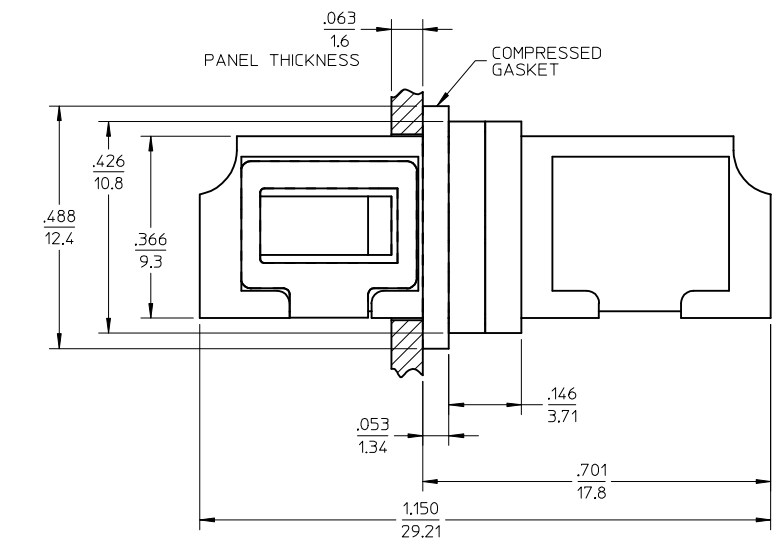
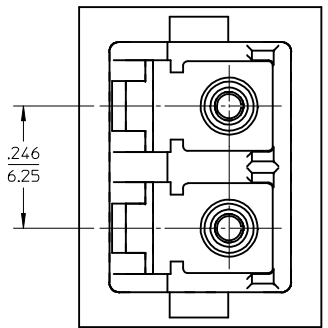
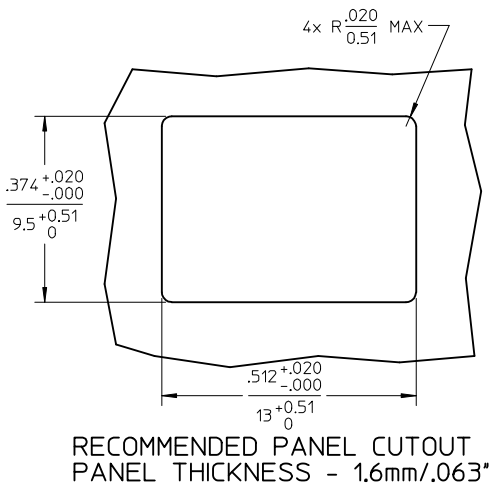
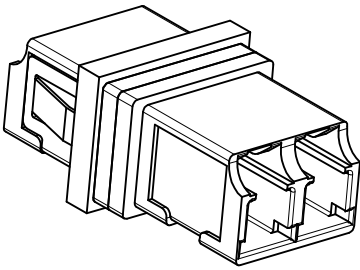


ADAPTER P/N	SPLIT SLEEVE MATERIAL
106115-2100	Zr
106115-2106	Ph. Bronze



- NOTES:
1. ALL DIMENSIONS ARE FOR REFERENCE ONLY.
  2. CONDUCTIVE FABRIC OVER FOAM GASKET IS SUPPLIED WITH PART.
  3. PART IS DIECAST.
  4. DUST CAPS NOT SHOWN.
  5. ADAPTERS TO BE PACKAGED IN TRAY.

ENTER DESCRIPTION EC NO: MF2013-0282 DRAWN: SMIGO 2012/11/13 CHKD: VCHEN 2012/11/13 APPR: WCHEN 2012/11/13	DESCRIPTION	QUALITY SYMBOLS  ▽=0 ▽=0	GENERAL TOLERANCES (UNLESS SPECIFIED)		DIMENSION STYLE IN/MM		SCALE 4:1	DESIGN UNITS INCH	THIRD ANGLE PROJECTION					
				mm	INCH	DRAWN BY PGIBLIN	DATE 2005/12/08	TITLE LC-D EMI ADAPTER, (SNAP MOUNT)						
			4 PLACES	± ---	± ---	CHECKED BY	DATE							
			3 PLACES	± ---	± ---	APPROVED BY		DATE	MOLEX MOLEX INCORPORATED					
			2 PLACES	± ---	± ---									
			1 PLACE	± ---	± ---									
						ANGULAR ±1/2°		MATERIAL NO. SEE TABLE		DOCUMENT NO. SD-106115-210X		SHEET NO. 1 OF 1		
						DRAFT WHERE APPLICABLE MUST REMAIN WITHIN DIMENSIONS		THIS DRAWING CONTAINS INFORMATION THAT IS PROPRIETARY TO MOLEX INCORPORATED AND SHOULD NOT BE USED WITHOUT WRITTEN PERMISSION						
								SIZE B						