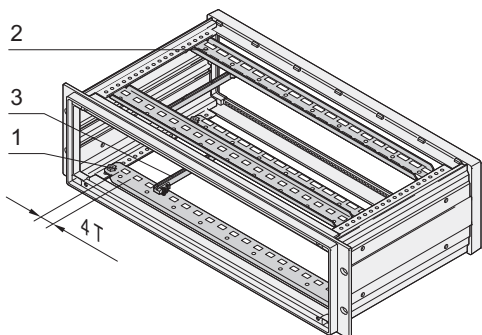
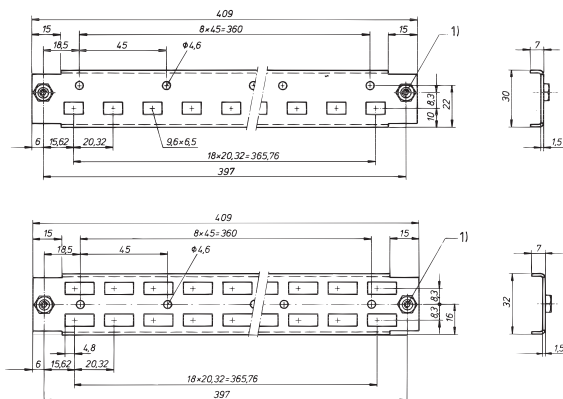


19" chassis – *inpac*

Support rail for guide rails



IPA30639



a3-308xx

Dimension drawing top: Front support rail,
dimension drawing bottom: rear support rail;
1) bush M4, pressed-in

- 4 support rails to fix PCBs with guide rails
- Support rail can also be used to fix a custom mounting plate

Order Information

| Item | Description | Part no. |
|------|--|------------------|
| 1 | front support rail, St, 1.5 mm, blue-passivated, 1 piece | 30828-165 |
| 2 | rear support rail, St, 1.5 mm, blue-passivated, 1 piece | 30828-174 |

Accessories

Guide rail 160 mm (Item 3), PBT, UL 94 V-0, with integrated fixture for connector to EN 60603 (DIN 41612), PU 1 pair **60817-078**

Guide rail 220 mm (Item 3), PBT, UL 94 V-0, with integrated fixture for connector to EN 60603 (DIN 41612), PU 1 pair **60817-079**

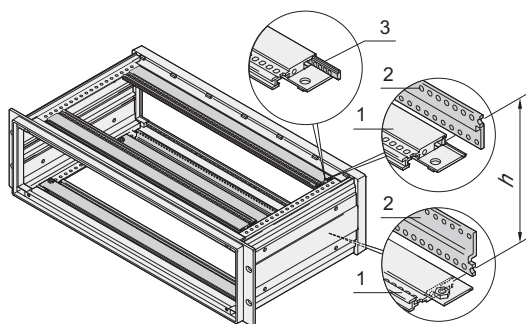
Screw for mounting of support rails, M4 × 8, flathead bolts with posidrive, PU 100 pieces **21100-677**

- Guide rails see page 6.134



For further information www.schroff.biz/oneclick
oneClick search code = Part no.

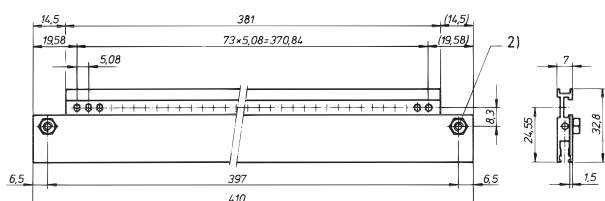
Horizontal rail for guide rails, backplane and connector mounting



IPA30640

Item 1: horizontal rail, item 2: Z-rail, item 3: threaded insert

| h | Bolt-on dimension of backplane |
|---|--------------------------------|
| U | mm |
| 2 | 75.40 |
| 3 | 119.80 |
| 4 | 164.30 |
| 6 | 252.90 |



A4-587

2) bush M4, pressed-in

- 4 horizontal rails to fix guide rails (for PCBs) and for backplane or connector mounting
- Useable width 75 HP

Order Information

| Item | Description | Qty/PU | Part no. |
|--------------------|--|--------|------------------|
| 1 | Horizontal rail 75 HP, Al extrusion, anodised | 1 | 30828-128 |
| Accessories | | | |
| | Z-rail (item 2), Al extrusion, anodised, 1 piece | | 30814-513 |
| | Threaded insert (item 3), St, zinc-plated (blue), 1 piece | | 30819-604 |
| | Screw to fix horizontal rails, M4 × 8, Pozidrive flathead screw, 100 pieces | | 21100-677 |
| | Cheesehead screw with slot M2.5 × 6, DIN 84, PU 100 pieces M2.5 × 6, DIN 84, 100 pieces | | 21100-146 |

Note

- Threaded inserts cannot be used at front
- For backplane mounting, threaded inserts are required in the rear horizontal rails
- For connector mounting, threaded inserts and Z-rails are required in the rear horizontal rails
- Guide rails see page 6.134