

DETAILS

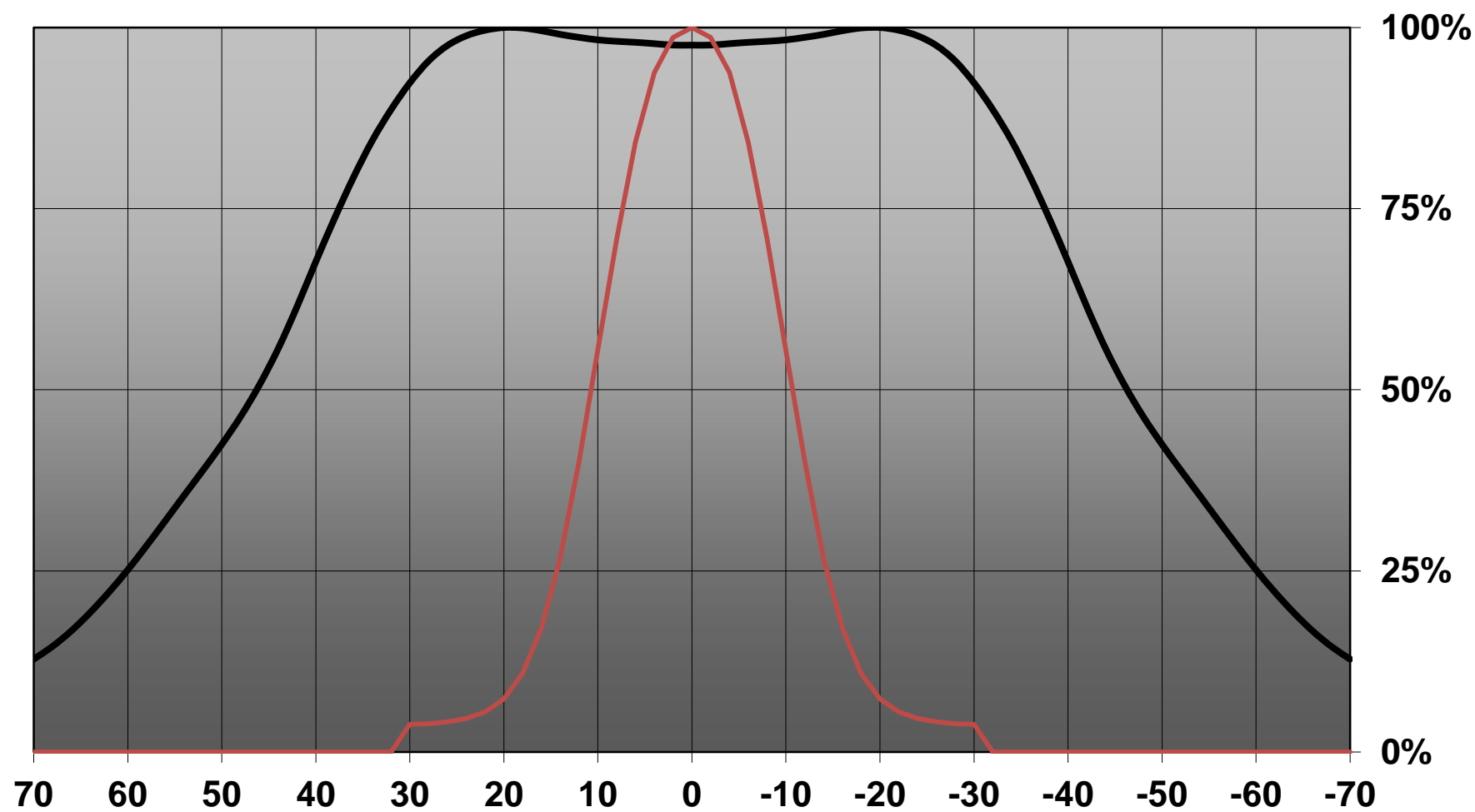
Product Number	C13015_FLARE-MINI-AD
Family	Flare
Type	Lens
Color	clear
Diameter	16 mm
Height	8,6 mm
Style	round
Optic Material	PMMA
Holder Material	
Fastening	glue
Status	ready
ROHS Compliant	Yes
Date Updated	9/05/2014



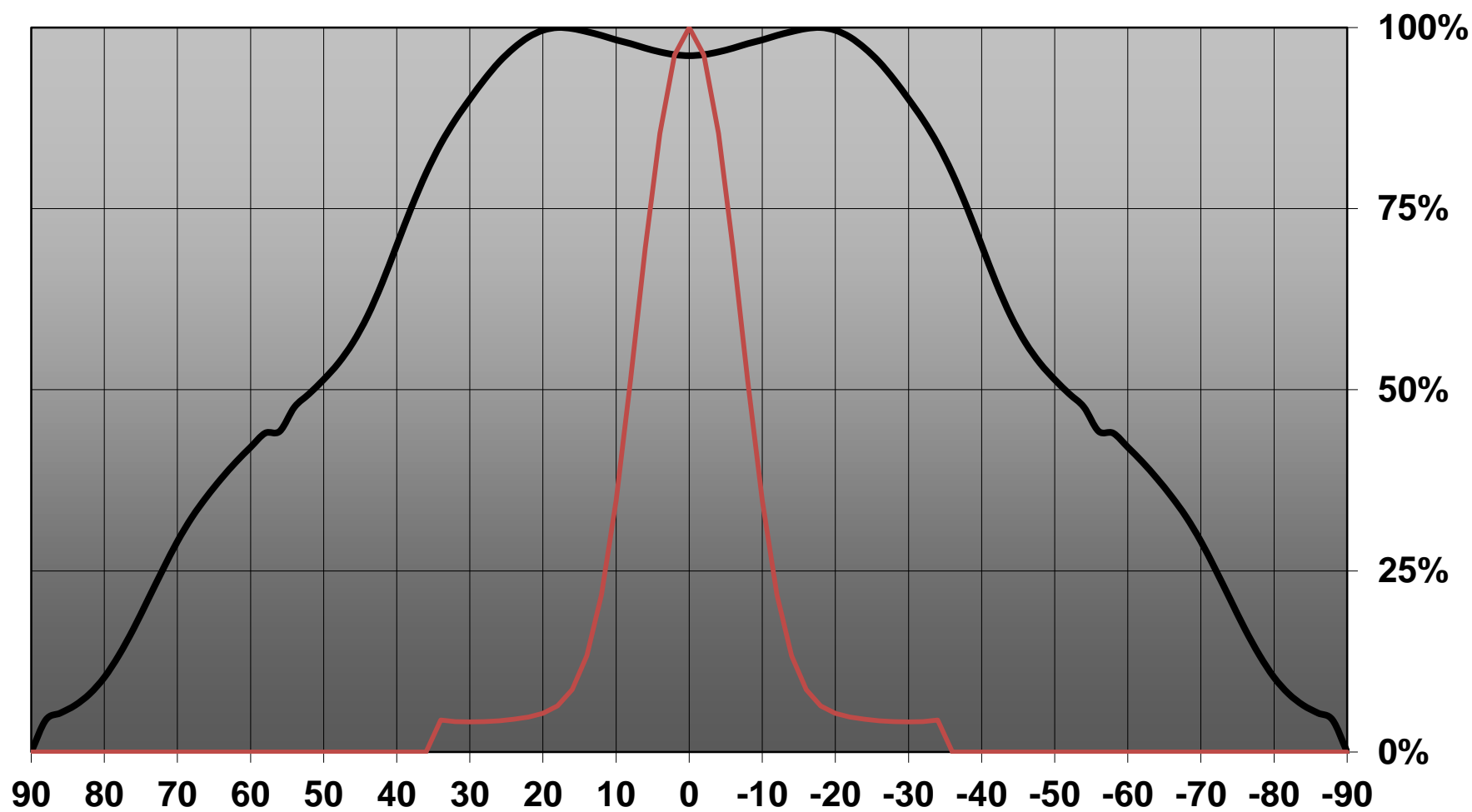
OPTICAL PROPERTIES

LED	Viewing Angle	Light Beam	Efficiency	cd/lm	connector
Oslon Square EC	92+21 degrees		94 %	1.100	-
XP-E2	93+19 degrees		94 %	1.300	-
XP-G2	97+24 degrees		94 %	1.000	-
LH351Z	99+25 degrees		94 %	1.100	-
XB-D	100+16 degrees		93 %	1.200	-
XP-G	100+20 degrees		94 %	1.100	-
NVSxx19A	100+20 degrees		94 %	1.100	-
XT-E	104+19 degrees		94 %	1.100	-
XP-L	111+30 degrees		90 %	0.710	-

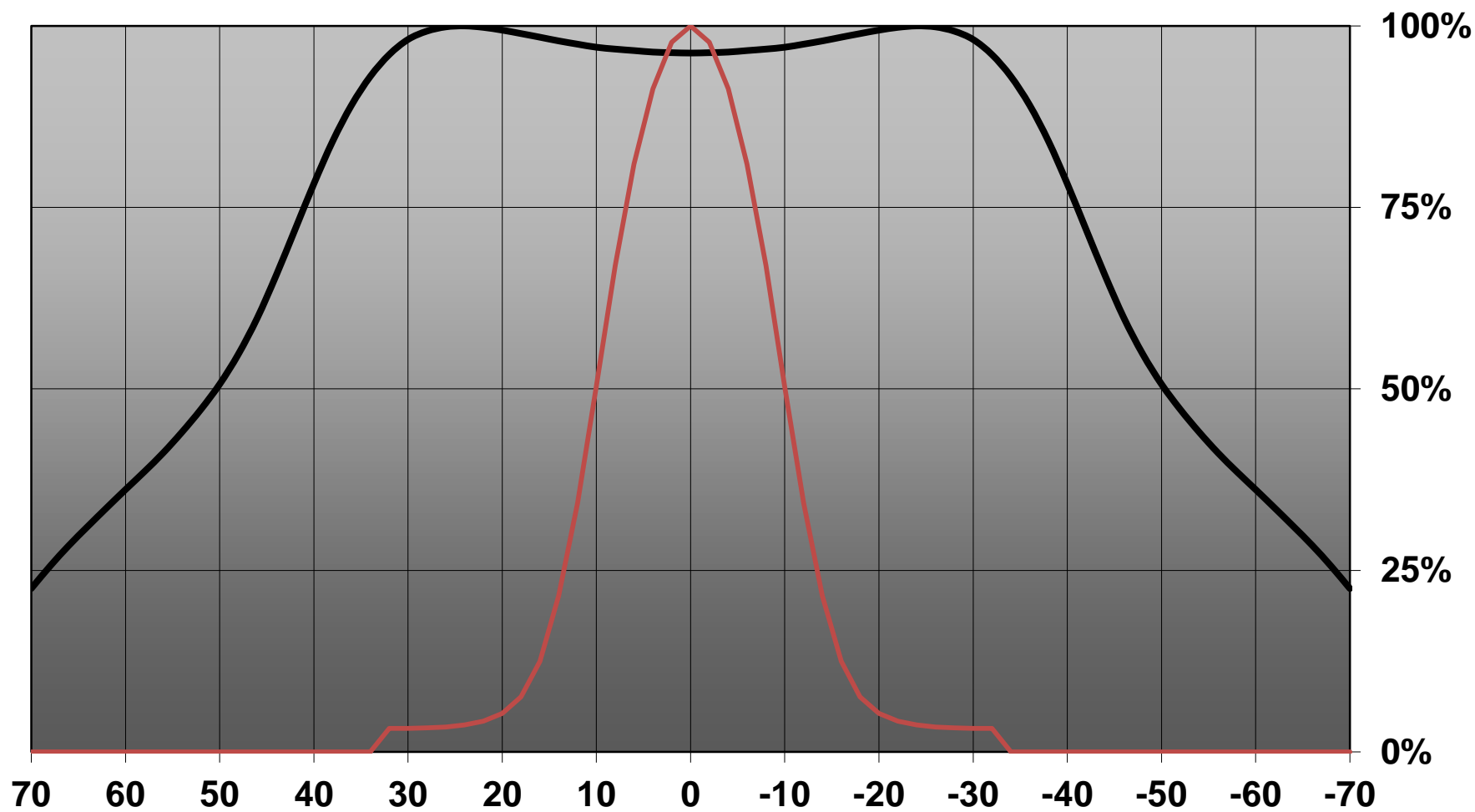
Relative intensity of CA13057&CA13058_FLARE-MINI-AD-SQEC



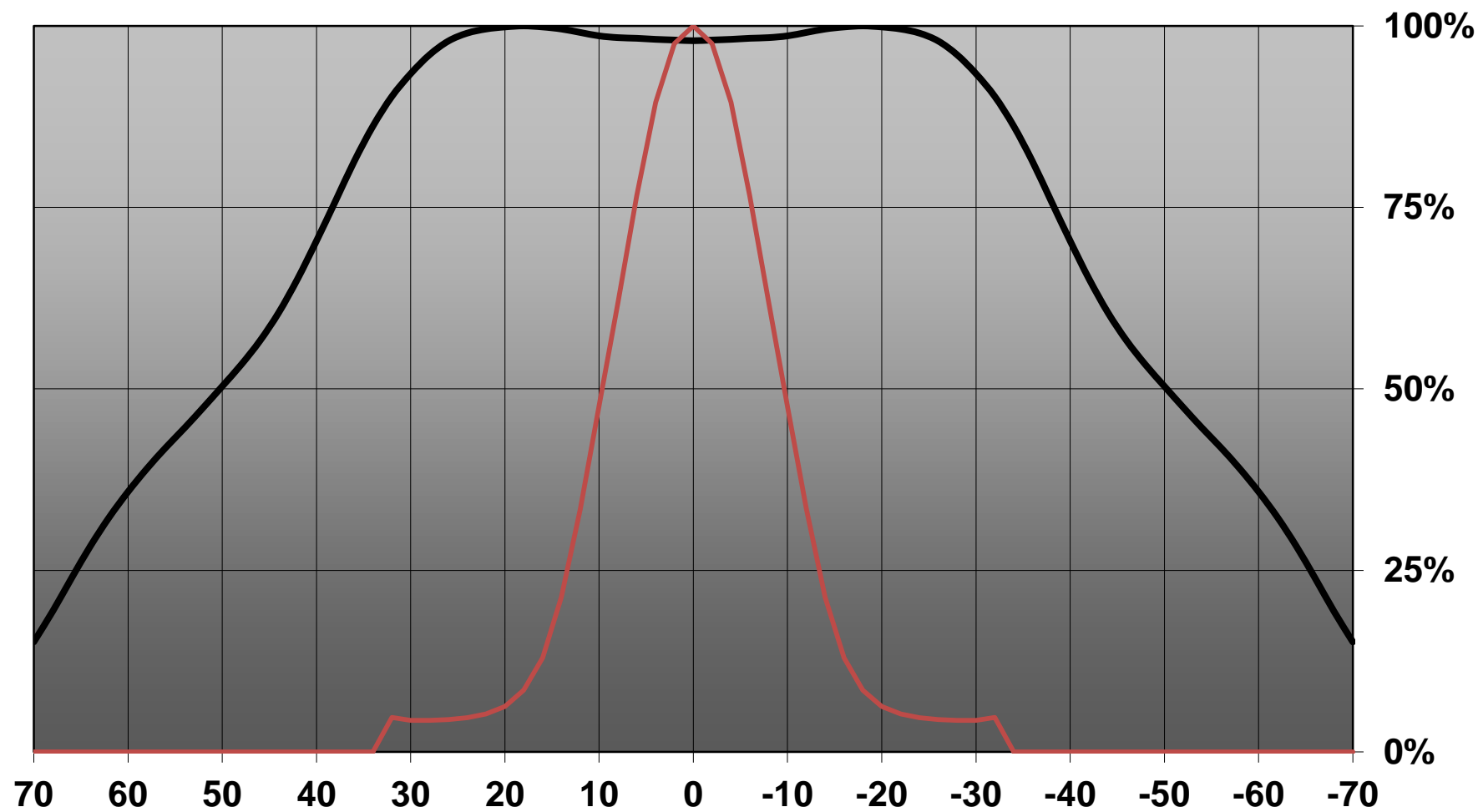
Relative intensity of CA13057&CA13058_FLARE-MINI-AD-XBD



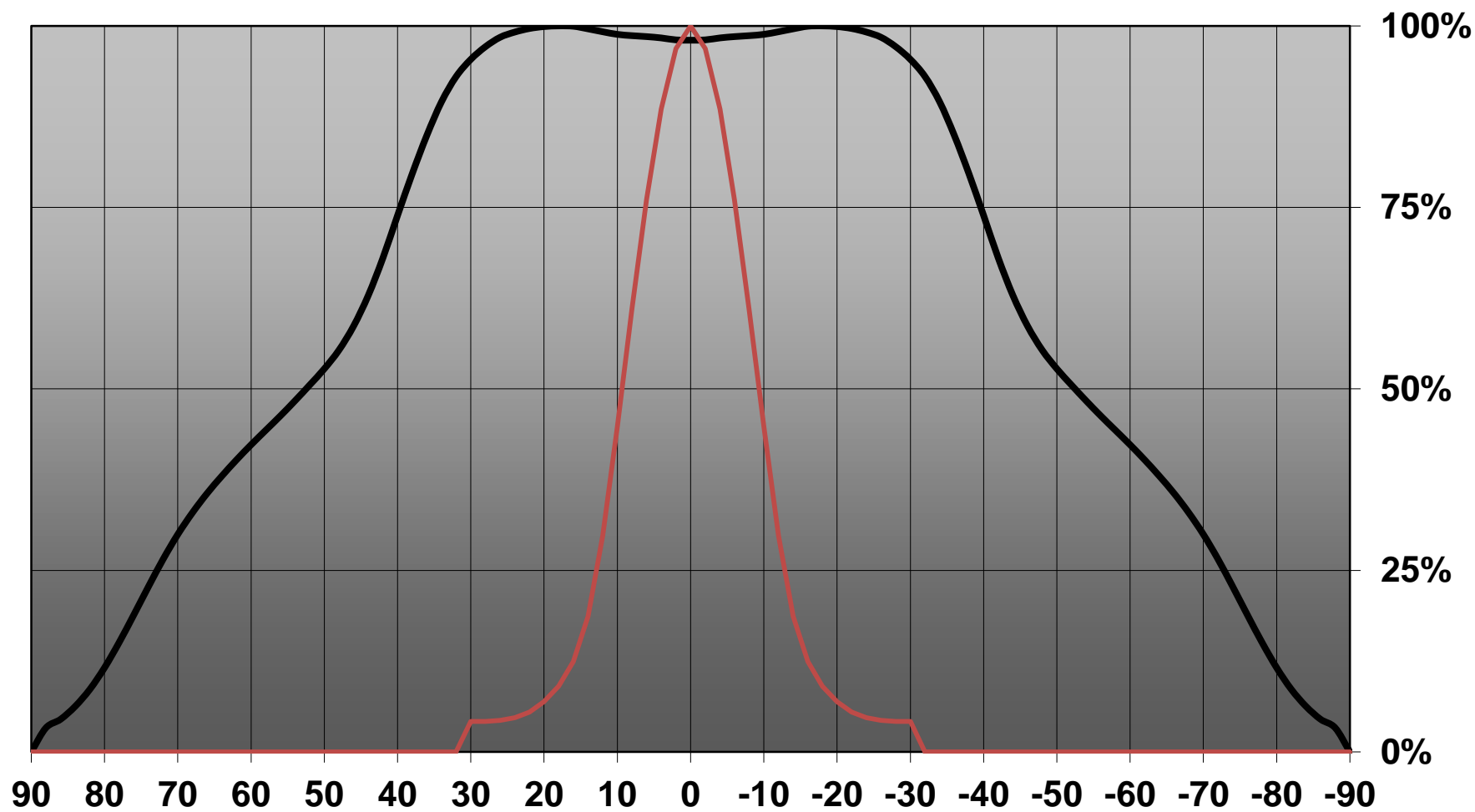
Relative intensity of CA13057&CA13058_FLARE-MINI-AD-XPG



Relative intensity of CA13057&CA13058_FLARE-MINI-AD-NVS19



Relative intensity of CA13057&CA13058_FLARE-MINI-AD-XTE



D

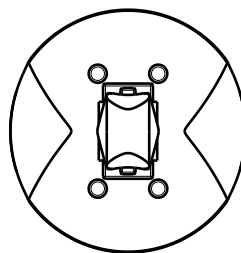
C

B

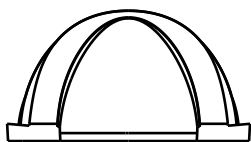
A

4

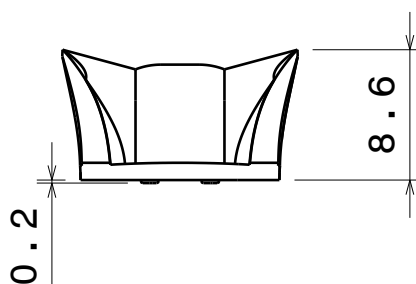
4



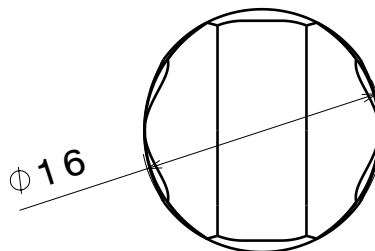
Bottom view



Right view



Front view



Top view

3

3

2

2

This drawing is our property.
It can't be reproduced
or communicated without
our written agreement.



Ledil Oy
Salorankatu 10
FIN 24240 SALO
Finland

DRAWING TITLE

DRAWN BY

DATE

as

1.8.2012

CHECKED BY

DATE

sn

1.8.2012

DESIGNED BY

DATE

pl

27.2.2012

SIZE

PART NUMBER

REV

A4

001

SCALE

2:1

WEIGHT

SHEET

1/1

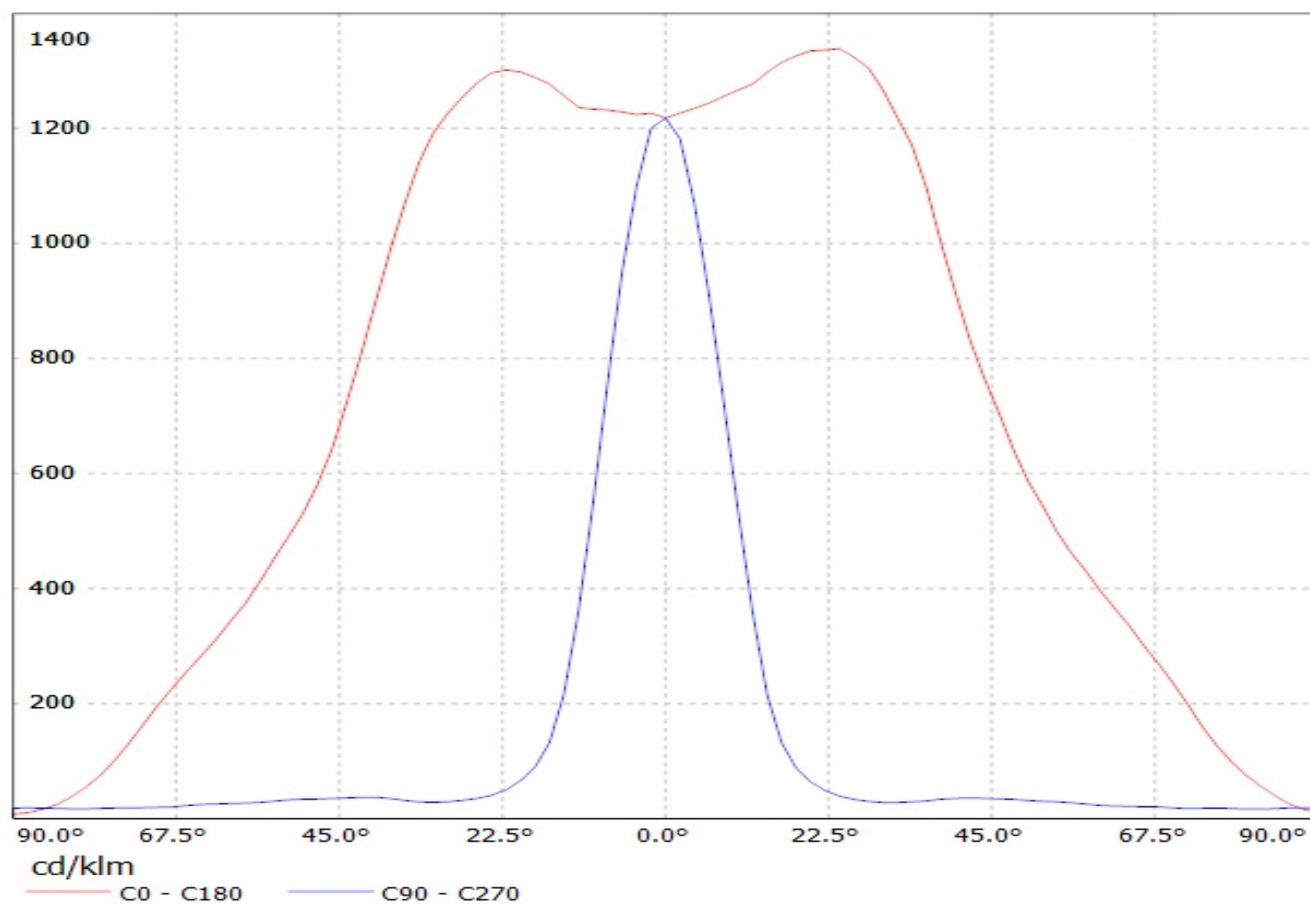
D

A

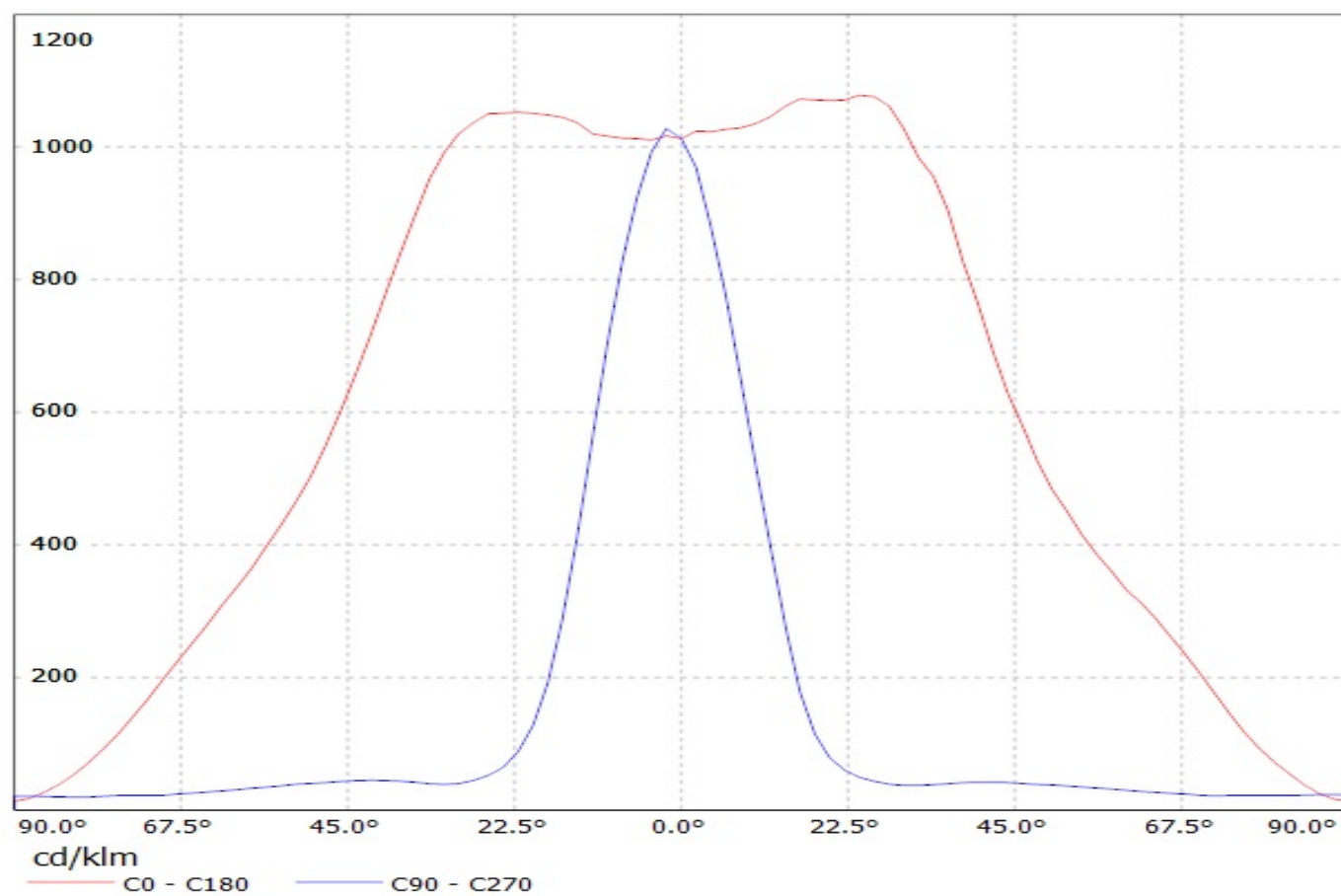
1

1

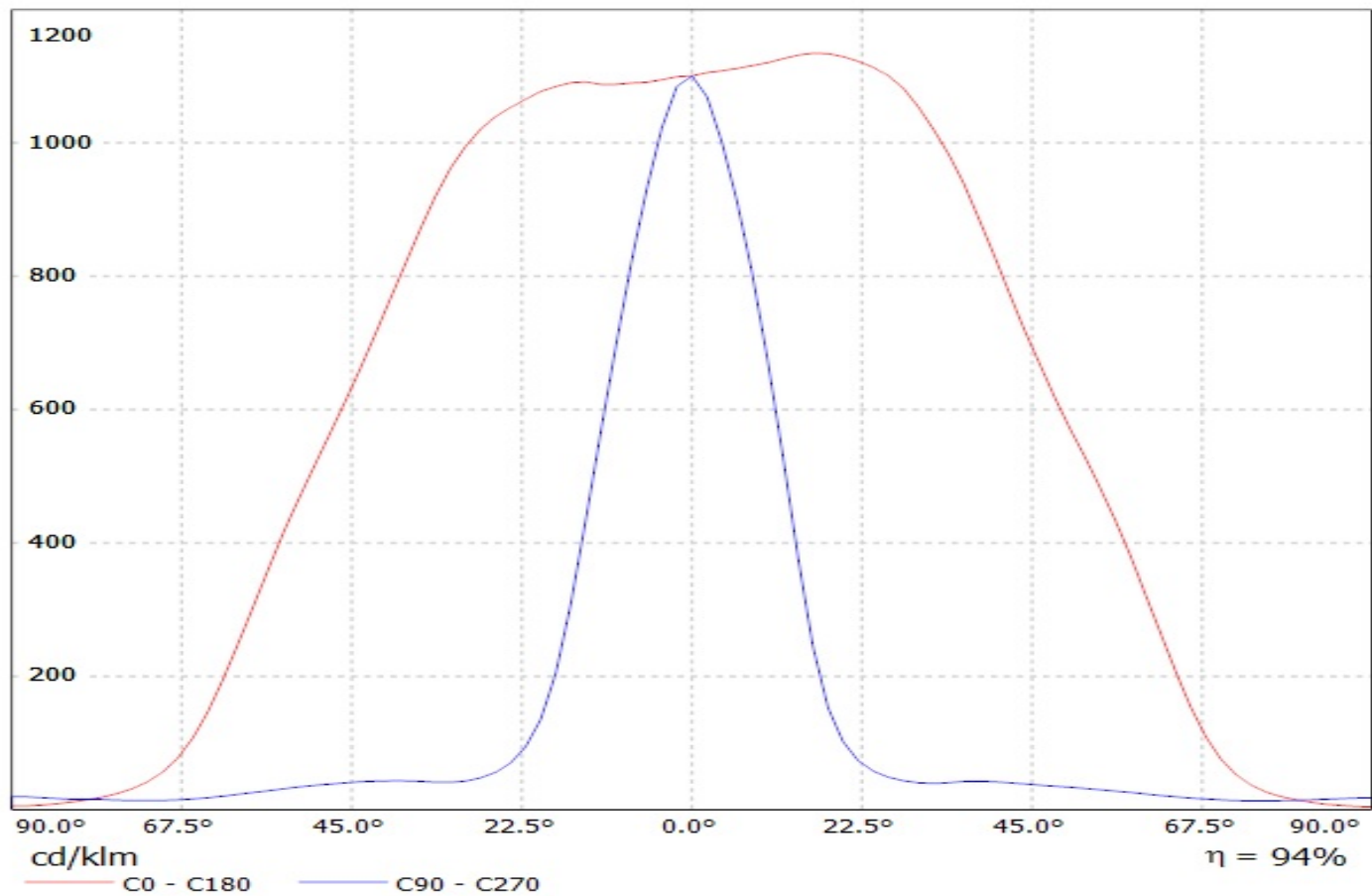
Luminaire: Ledil Oy C13015_FLARE-MINI-AD (CREE XP-E2 (92 lm @ 250 mA)) Efficiency=94%
Lamps: 1 x CREE XP-E2 (92 lm @ 250 mA)



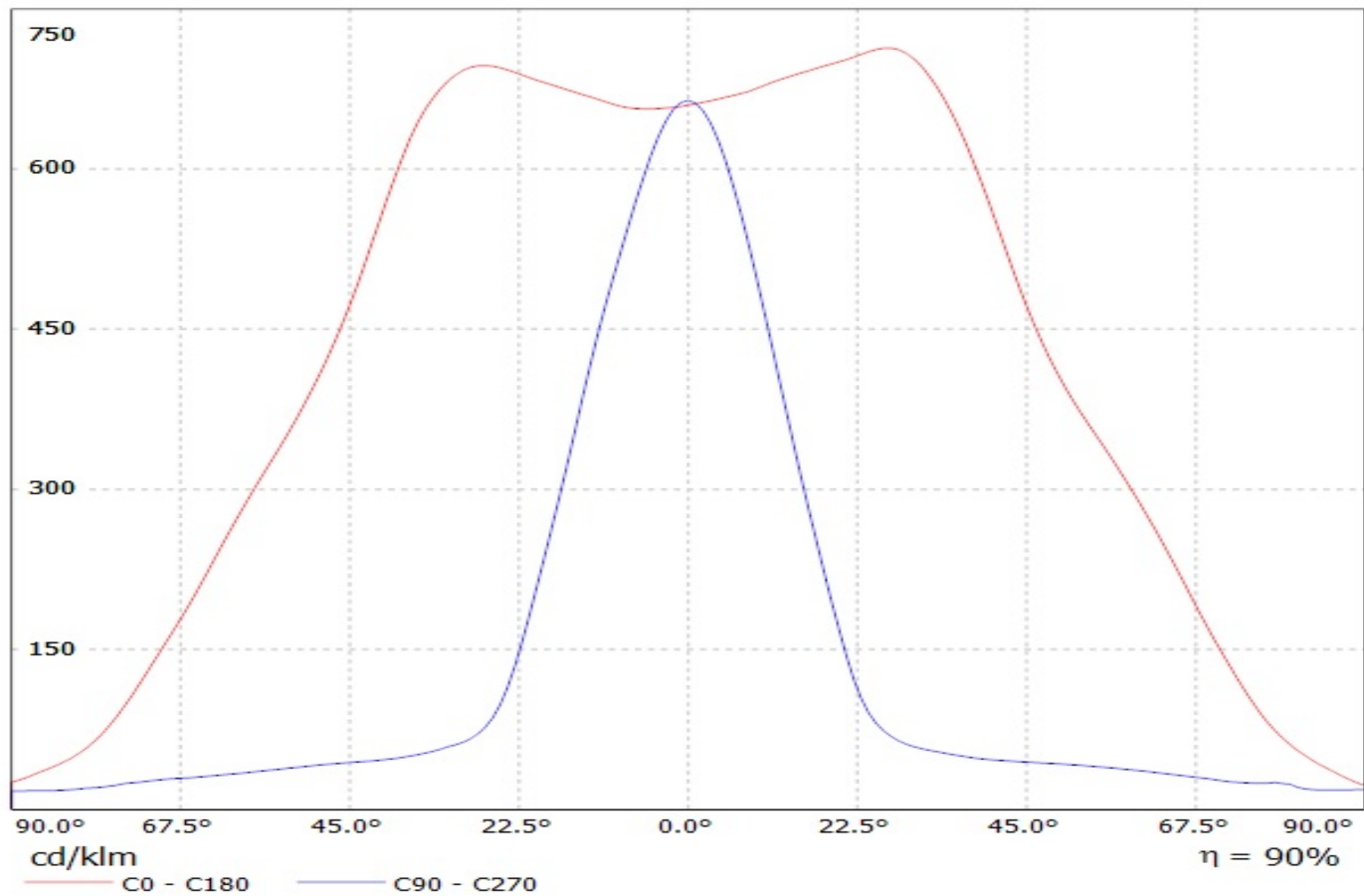
Luminaire: Ledil Oy C13015_FLARE-MINI-AD (CREE XP-G2 (99 lm @ 250 mA)) Efficiency=94%
Lamps: 1 x CREE XP-G2 (99 lm @ 250 mA)



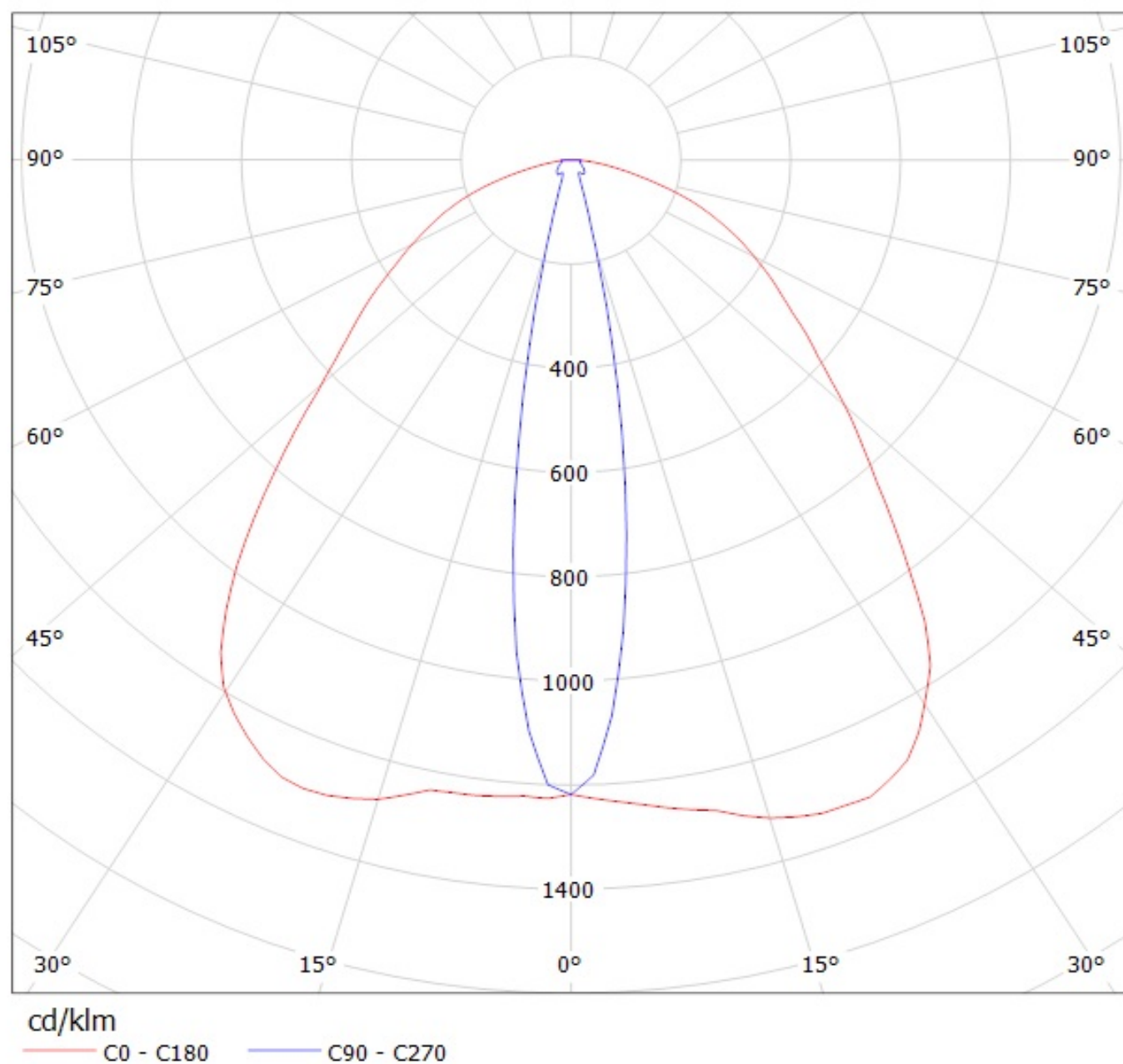
Luminaire: LEDil Oy C13015_FLARE-MINI-AD_(LH351Z)
Lamps: 1 x Samsung LH351Z (90.14lm @ 250mA) CCT=6500K P=0.7W I=250mA



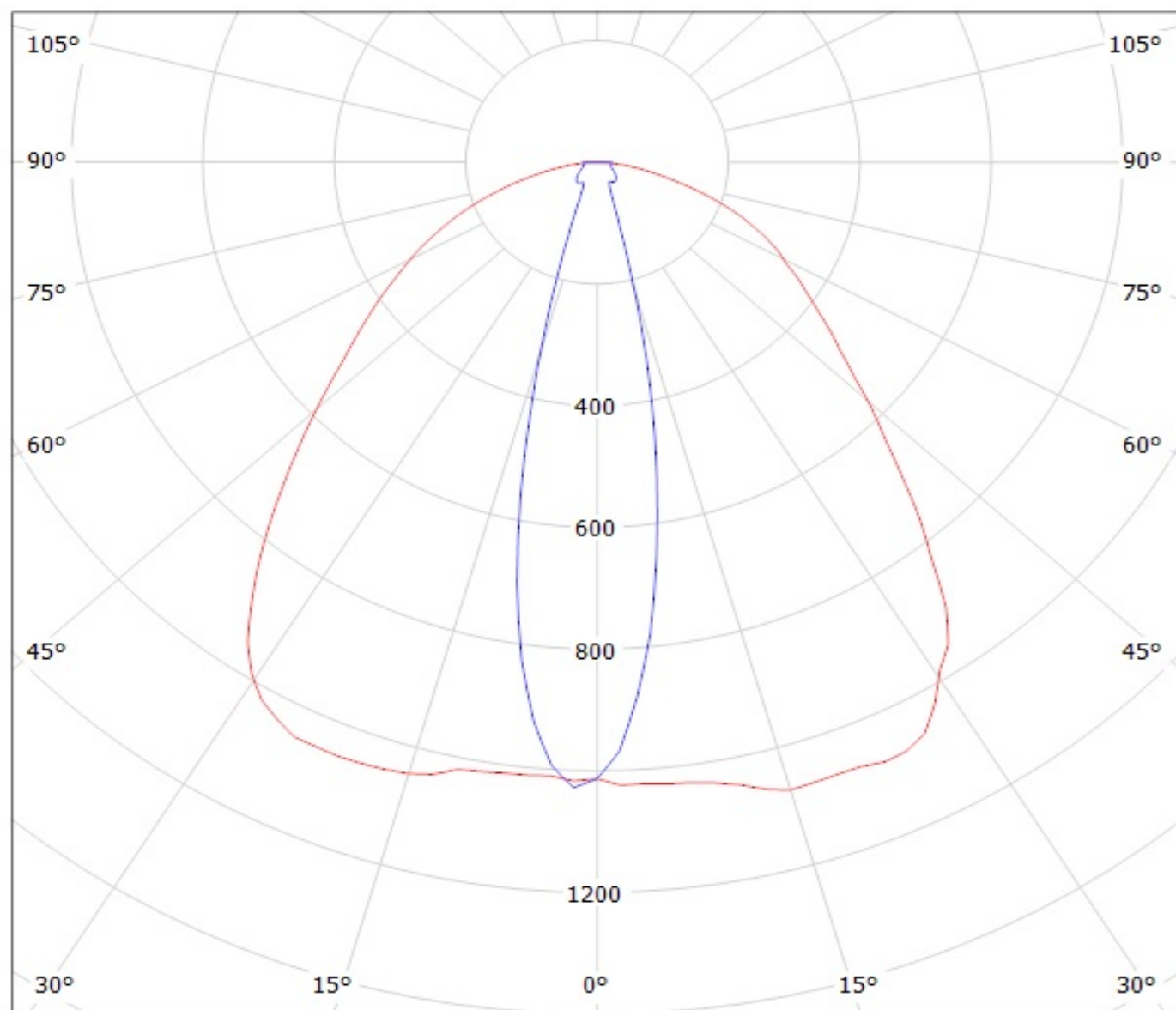
Luminaire: LEDiL Oy C13015_FLARE-MINI-AD_(XP-L)
Lamps: 1 x Cree_XP-L_127.813lm@250mA_P=0.73723W_I=249.9mA



Luminaire: Ledil Oy C13015_FLARE-MINI-AD (CREE XP-E2 (92 lm @ 250 mA)) Efficiency=94%
Lamps: 1 x CREE XP-E2 (92 lm @ 250 mA)



Luminaire: Ledil Oy C13015_FLARE-MINI-AD (CREE XP-G2 (99 lm @ 250 mA)) Efficiency=94%
Lamps: 1 x CREE XP-G2 (99 lm @ 250 mA)



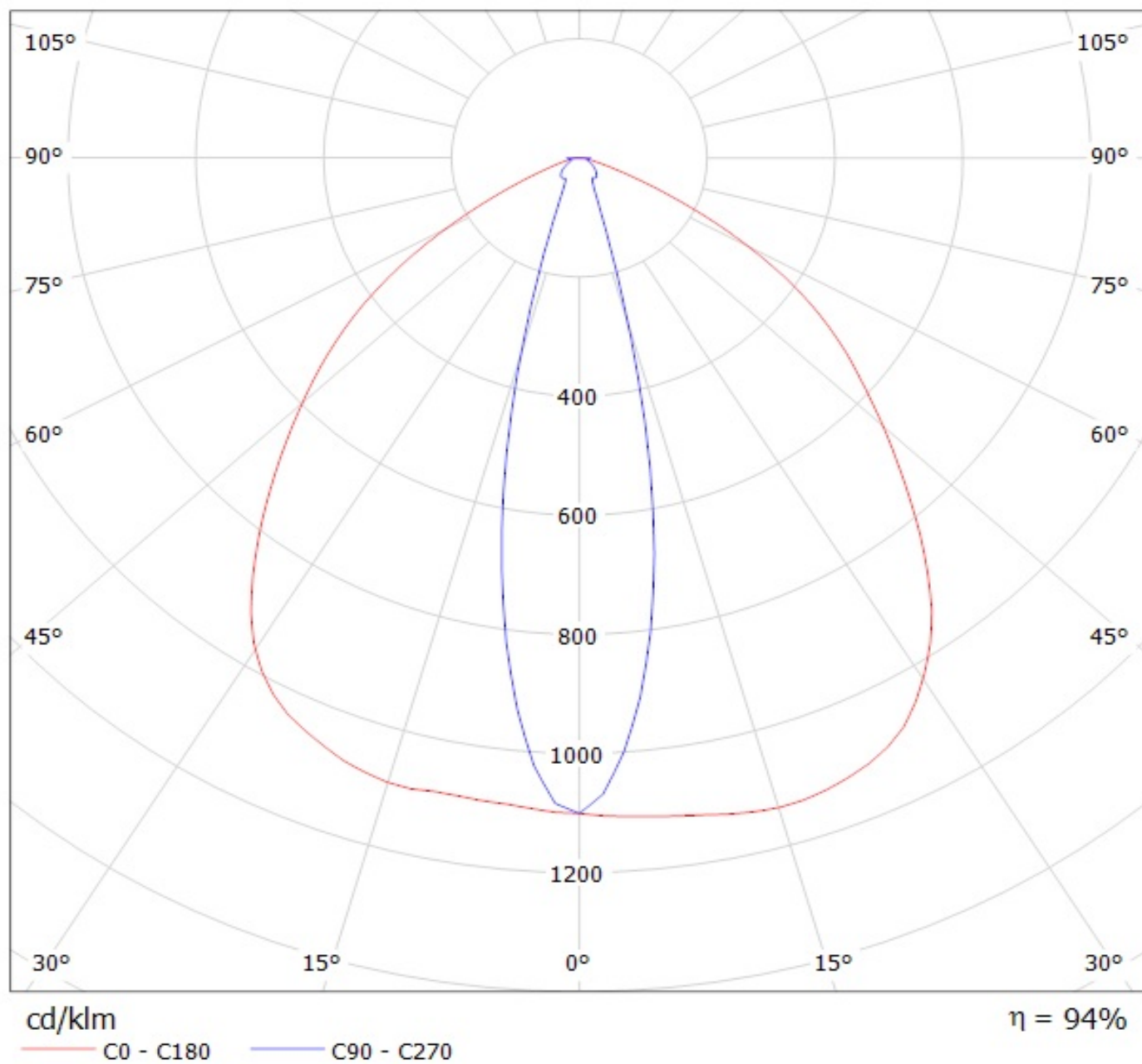
cd/klm

— C0 - C180

— C90 - C270

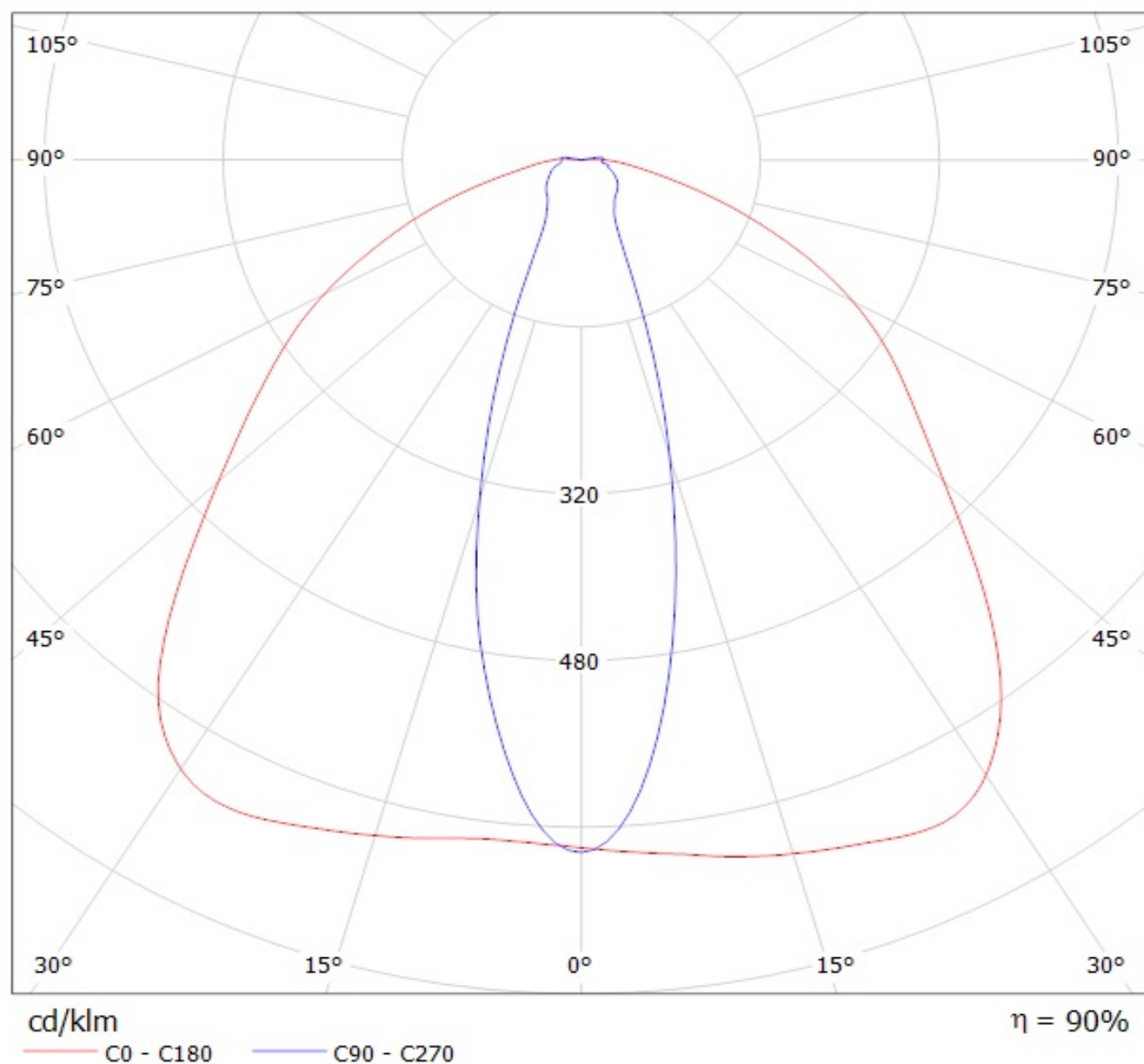
Luminaire: LEDil Oy C13015_FLARE-MINI-AD_(LH351Z)

Lamps: 1 x Samsung LH351Z (90.14lm @ 250mA) CCT=6500K P=0.7W I=250mA



Luminaire: LEDiL Oy C13015_FLARE-MINI-AD_(XP-L)

Lamps: 1 x Cree_XP-L_127.813lm@250mA_P=0.73723W_I=249.9mA



NOTE: The typical divergence will be changed by different color, chip size and chip position tolerance. The typical total divergence is the full angle measured where the luminous intensity is half of the peak value.

GENERAL INFORMATION

- Product series especially designed & optimized for series of LEDs.
- Special care taken to make light distribution as uniform as possible.
- Fastening to PCB with appropriate adhesive. By clicking link below you can find Ledil recommended glue options.
http://www.ledil.com/datasheets/DataSheet_GLUES.pdf

NOTE 1: We advise customer to ensure the suitability and sufficiency of the bond in the end product. For example, mechanical stress, vibration and holes on the surface of the circuit board weaken the strength of the glue.

NOTE 2: All surfaces where glue is applied must be clean, dry and free from grease and dirt. If cleaning of PCB surfaces is needed, please follow strictly the cleaning instructions of your LED manufacturer -this is important as cleaning shall under no circumstances damage LEDs or other electronics components on the PCB.

Further note that optical components shall not be cleaned with any chemicals - only micro fiber cloth may be used to remove fingerprints or other traces from handling.