

1. MATERIALS AND FINISHES:

- BODIES, SLEEVE, & LOCKNUT
- CONTACT
- LOCKWASHER
- CRIMP FERRULE
- FRONT & REAR INSULATORS
- ISOLATION SLEEVE
- BRASS, NICKEL PLATED
- PHOSPHOR BRONZE, GOLD PLATED
- PHOSPHOR BRONZE, NICKEL PLATED
- ANNEALED COPPER, NICKEL PLATED
- PTFE
- DELRIN

2. ELECTRICAL: (FREQUENCY RANGE = DC TO 3.0 GHz)

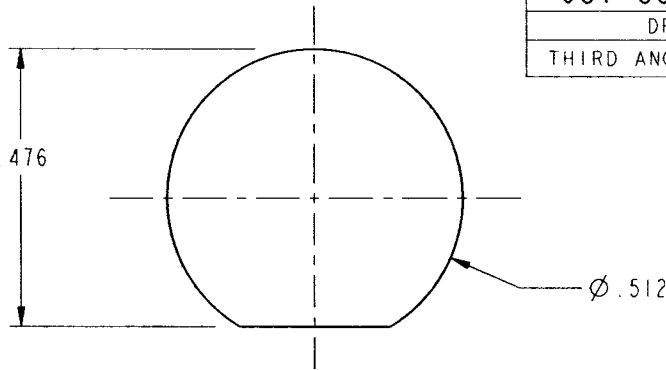
- V.S.W.R. (RETURN LOSS) = 1.300 MAX. (-17.7 dB)
- INSERTION LOSS = 0.35 dB MAX. (MATED PAIR)

3. CONTINUOUS OPERATING TEMPERATURE: -40°F TO +185°F (-40°C TO +85°C)

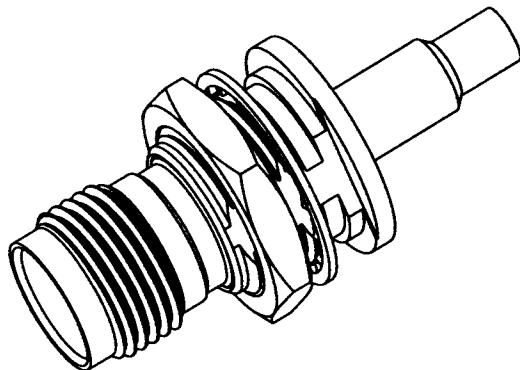
4. MAXIMUM PANEL THICKNESS: .175 (4.45mm)

5. INTERFACE MEETS THE REQUIREMENTS OF MIL-STD-348, TNC SERIES

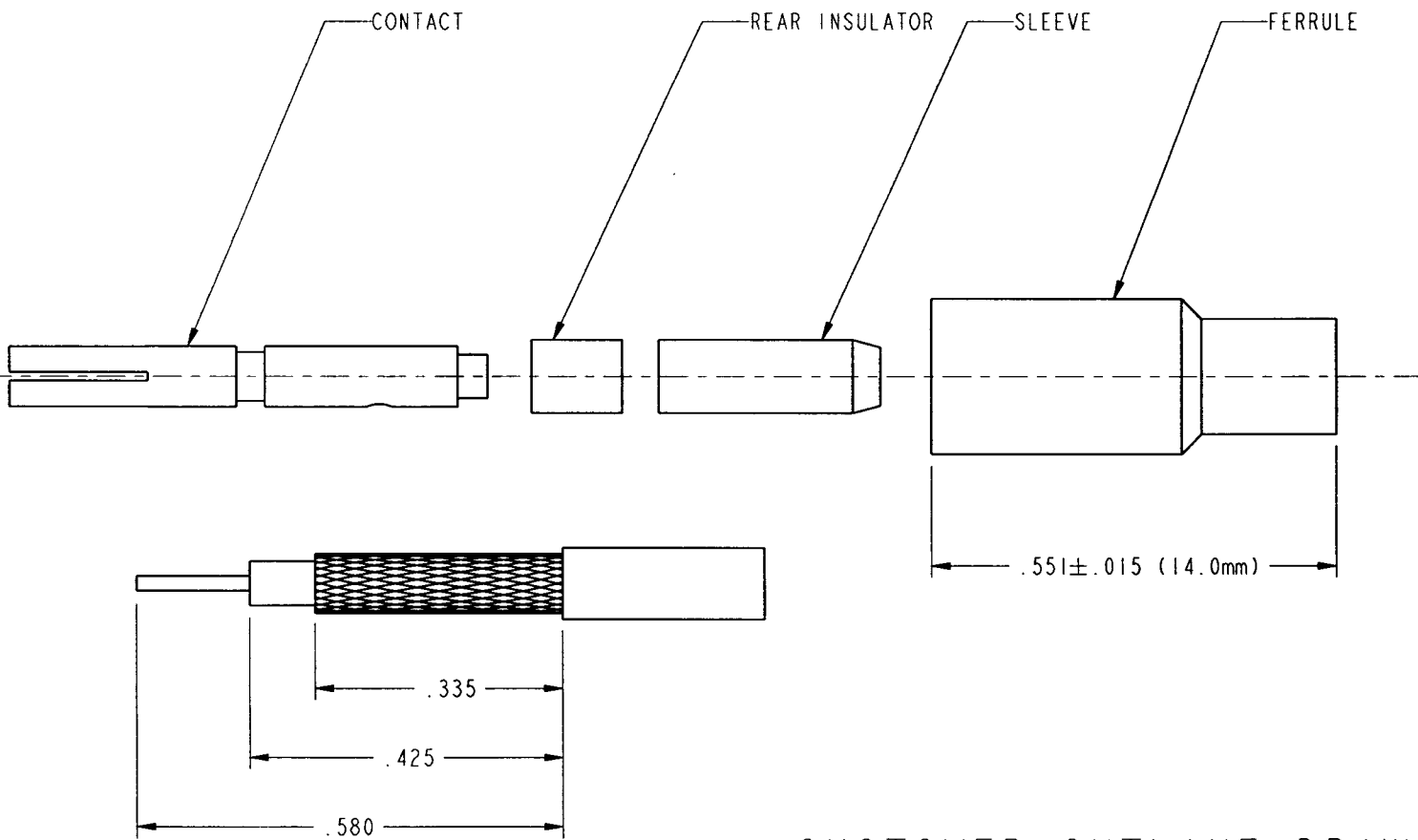
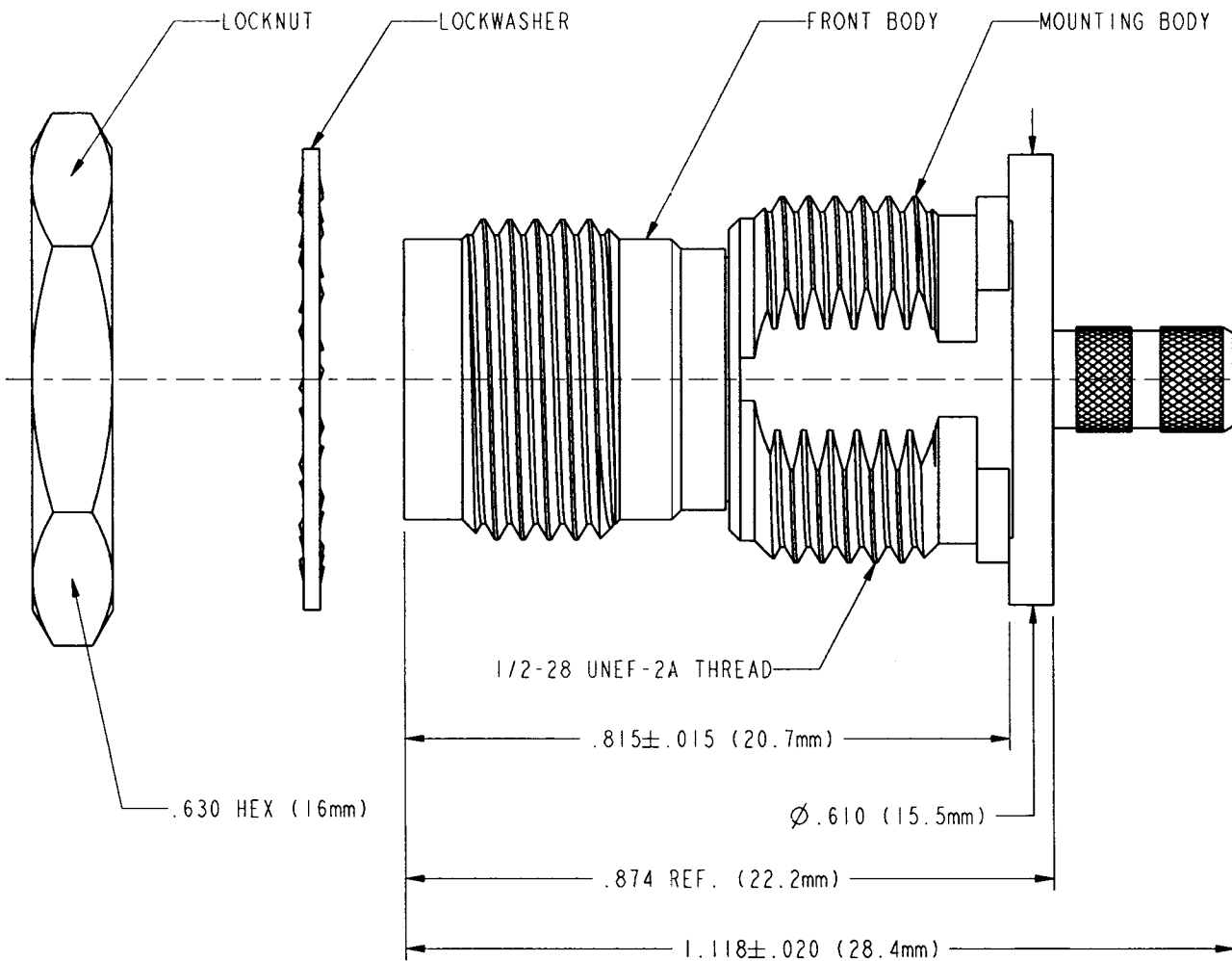
6. CRIMP FERRULE USING .178 HEX DIE, CRIMP CONTACT (OPTIONAL) USING .068 HEX DIE



RECOMMENDED MOUNTING HOLE



SCALE 2.000



RECOMMENDED CABLE STRIPPING DIMENSIONS

CUSTOMER OUTLINE DRAWING
FOR REFERENCE ONLY

Mouser Electronics

Authorized Distributor

Click to View Pricing, Inventory, Delivery & Lifecycle Information:

[Amphenol:](#)

[31-5881-RFXD](#)