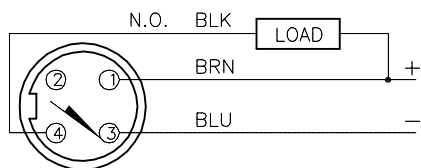


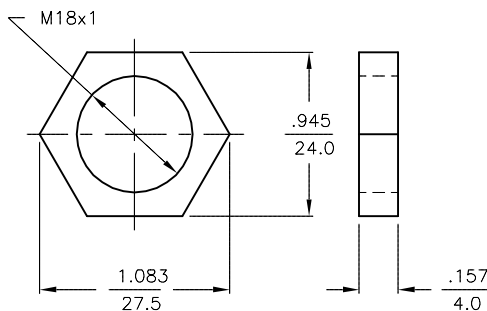
WIRING DIAGRAMS



OUTPUT: AN6X

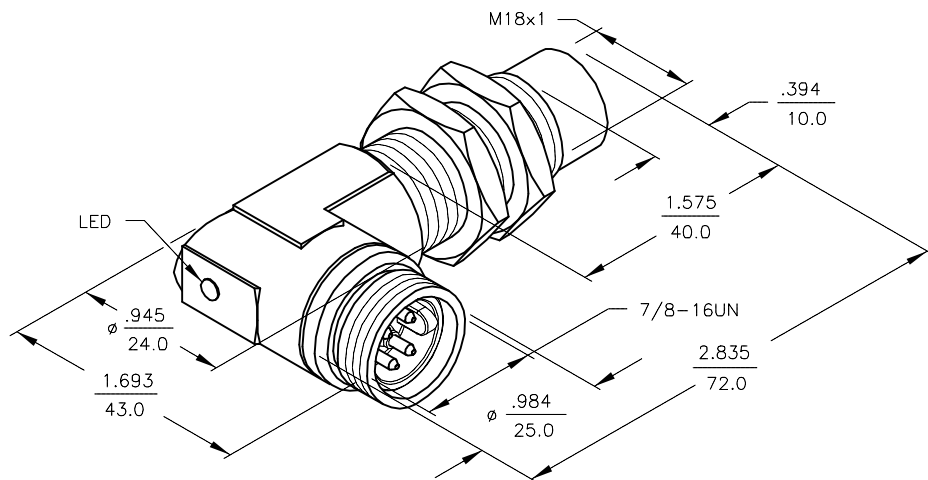
SHORT-CIRCUIT AND OVERLOAD PROTECTED

LOCKNUT LN-M18



SPECIFICATIONS

OPERATING VOLTAGE	10-30 VDC
RIPPLE	≤ 10%
HYSTERESIS (DIFFERENTIAL TRAVEL)	3-15% (5% TYPICAL)
VOLTAGE DROP ACROSS CONDUCTING SENSOR	≤ 1.8 V at 200 mA
OUTPUT FUNCTION -RZ	NORMALLY OPEN 3-WIRE DC SELF-CONTAINED
TTL COMPATIBLE	NO
SHORT-CIRCUIT PROTECTED	YES
TRIGGER CURRENT FOR OVERLOAD PROTECTION	≥ 220 mA
CONTINUOUS LOAD CURRENT	≤ 200 mA
LEAKAGE (OFF-STATE) CURRENT	<10 μA
NO-LOAD CURRENT	5.5-9.5 mA
TIME DELAY BEFORE AVAILABILITY	≤ 8 ms
POWER-ON EFFECT PROTECTION	INCORPORATED
REVERSE POLARITY PROTECTION	INCORPORATED
WIRE BREAK PROTECTION	INCORPORATED
PROTECTION AGAINST TRANSIENTS	2 kV, 1 ms, 1 kΩ
OPERATING TEMPERATURE	-25°C to +70°C (-13°F to +158°F)
ENCLOSURE	MEETS NEMA 1, 3, 4, 6, 13 AND IEC IP67
SHOCK	30 g, 11 ms
VIBRATION	55 Hz, 1 mm AMPLITUDE (IN ALL 3 PLANES)
LED FUNCTION	RED: OUTPUT ENERGIZED
RATED OPERATING DISTANCE	10 mm = .394" (NOMINAL)
MAX. SWITCHING FREQUENCY	≤ 0.5 kHz
REPEATABILITY	≤ 2% RATED OPERATING DISTANCE
SHIELDED	NO



RELATED DOCUMENTS		3RD ANGLE PROJECTION		THIS DRAWING IS CONFIDENTIAL AND THE PROPERTY OF TURCK INC. USE OF THIS DOCUMENT WITHOUT WRITTEN PERMISSION IS PROHIBITED.		<div><div><div><div>TURCK INC</div><div>High Technology Sensors and Automation Controls</div></div></div><div><div>3000 CAMPUS DRIVE</div><div>MINNEAPOLIS, MN 55441</div><div>1-800-544-7769</div><div>(763) 553-7300</div><div>(763) 553-0708 fax</div><div>turck.com</div></div></div>			
1.				DRFT	GMB	DATE	5/24/88	DESCRIPTION Ni10-G18-AN6X-B1441	
2.				APVD		SCALE	NONE		
3.		ALL DIMENSIONS DISPLAYED ON THIS DRAWING ARE FOR REFERENCE ONLY		UNIT OF MEASUREMENT			IDENTIFICATION NO. T4695700		REV D
4.				INCH [MILLIMETER]					
MATERIAL BRASS BARREL		CONTACT TURCK FOR MORE INFORMATION		DO NOT SCALE THIS DRAWING			FILE: T4695700		SHEET 1 OF 1
FINISH COPPER,NICKEL, CHROME PLATING									

D	DRAWING PROCESSED AS PART OF ECO 40518	KMY	11/29/12	40518
REV	DESCRIPTION	BY	DATE	ECO NO.