

GLZ306

M

DRAWING
NUMBER

1

ISSUE

REPLACES

DR

RELEASE NUMBER

REVISIONS

08/97

DRAWN J. O'DONNELL

CHECK

DESIGN

AUTHOR *N

DO NOT
SCALE PRINT

Honeywell

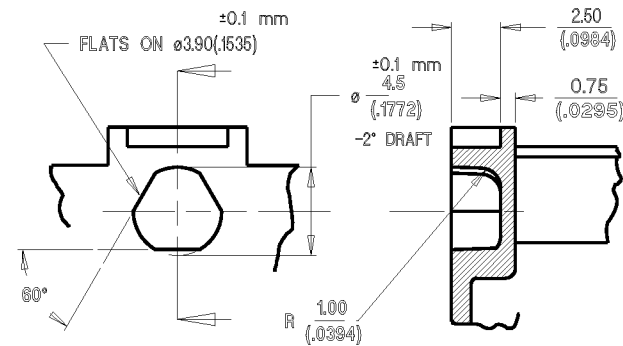
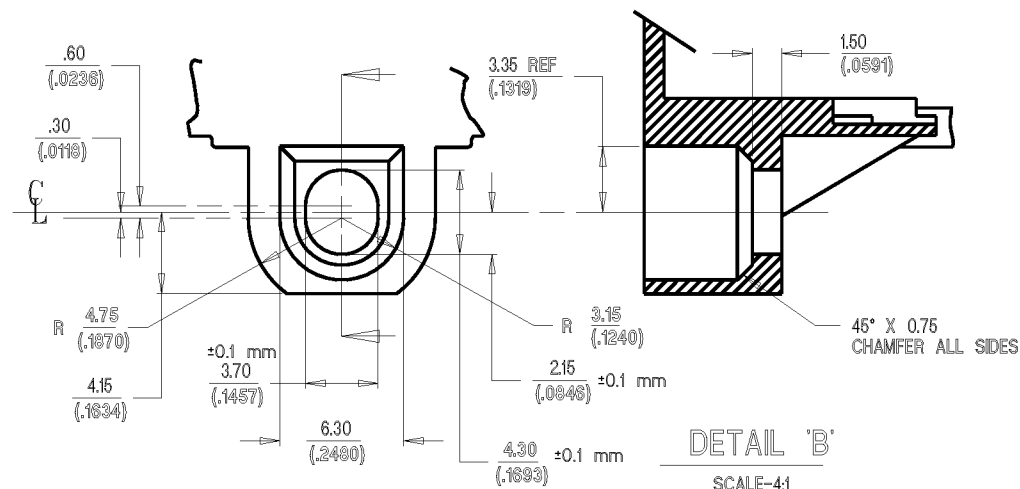
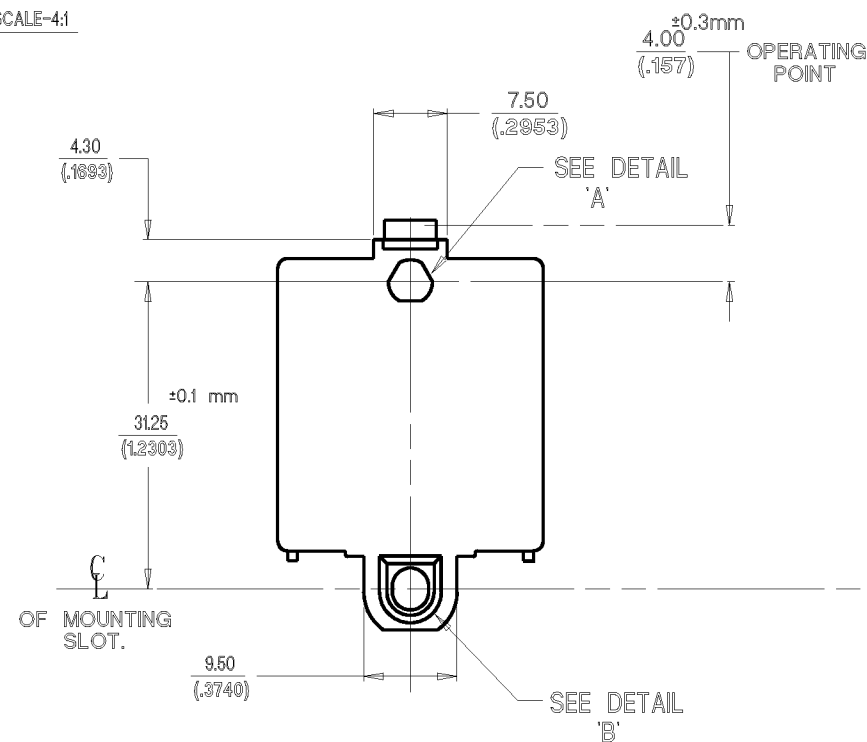
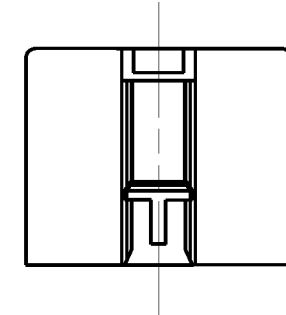
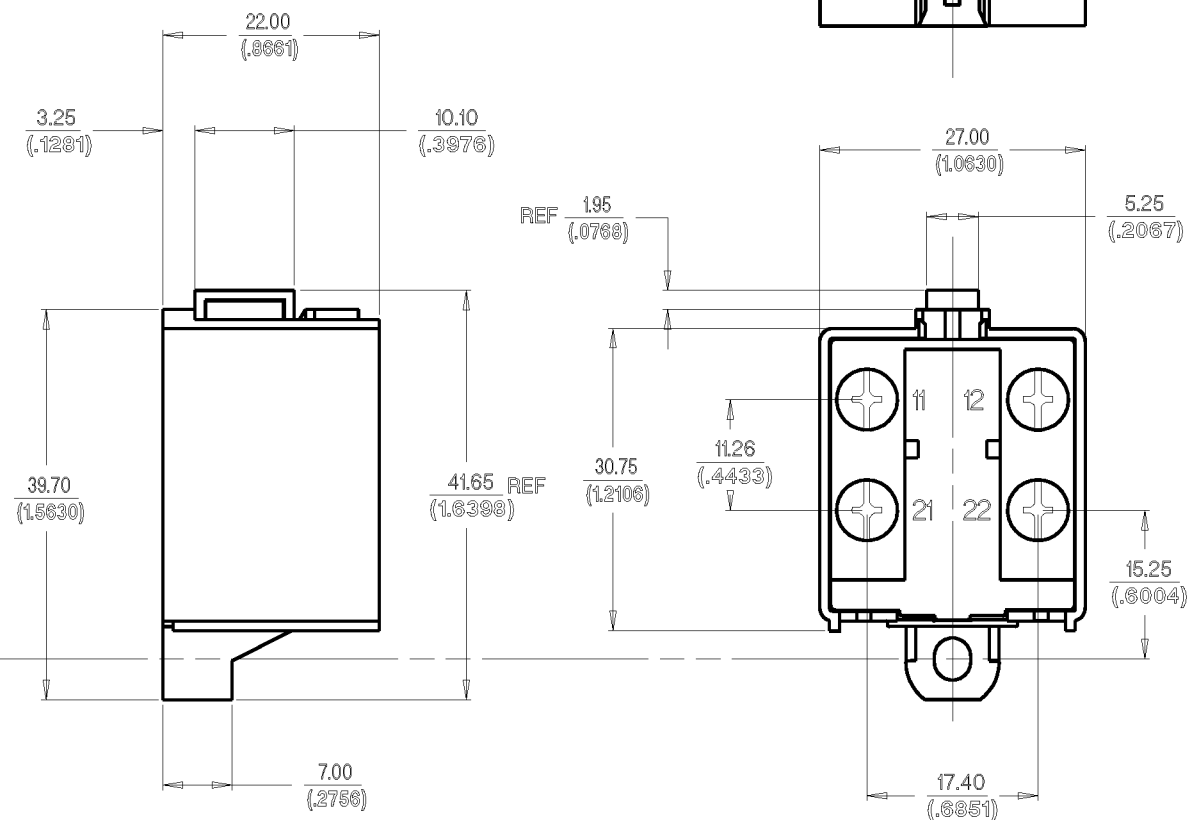
BASIC SWITCH
SLOW ACTION - 2 NORMALLY CLOSED

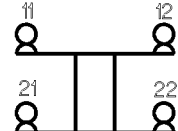
CATALOGUE LISTING

GLZ306

NOTES:-

1. MOUNTING HOLE WILL ACCEPT M3 MAX. SCREW.
2. TERMINALS WILL ACCEPT — STRANDED WIRE 18 TO 14 AWG
CONDUCTORS OF SOLID WIRE 18 TO 16 AWG.
3. SWITCHES ARE APPROVED TO EN60947-5-1
4. THERMOPLASTIC CASE , COVER AND PLUNGER.

DETAIL 'A'
SCALE-4:1DETAIL 'B'
SCALE-4:1

CHARACTERISTICS		ELECTRICAL DATA		
FORCE TO BREAK	___ 4.5N ±2N ___	CONTACT ARRANGEMENT 2Y	BREAK DISTANCE 3.5 mm	
SIMULTANEITY	___ 0.25mm MAX. ___	ELECTRICAL RATINGS (DEPENDANT ON ENCLOSURE) AC15 A500 DC13 Q300 I th 10A		
PRETRAVEL	___ 2mm ±0.3 ___	TOLERANCES UNLESS OTHERWISE STATED ±0.25 ANGULAR ± MODIFY ON CAD3D SYSTEM ONLY		
OVERTRAVEL	___ 3mm MIN. ___			
FULL OVERTRAVEL FORCE	___ 9N . ___			

THE COPYRIGHT OF THIS DRAWING IS THE PROPERTY OF HONEYWELL LTD. THE DRAWING IS SUPPLIED IN CONFIDENCE AND MUST NOT BE USED FOR ANY PURPOSE OTHER THAN THAT FOR WHICH IT IS SUPPLIED.

THIRD
ANGLE
PROJECTION

SCALE:- 2:1

DIMENSIONS ARE IN MM/INCHES

Mouser Electronics

Authorized Distributor

Click to View Pricing, Inventory, Delivery & Lifecycle Information:

[Honeywell:](#)

[GLZ306](#)