

# THA-112 Pulls



## Characteristic

Choose one from with feet or without feet, depending on the installing method.

## Application

Measuring instruments /  
Telecommunication devices

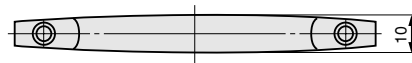
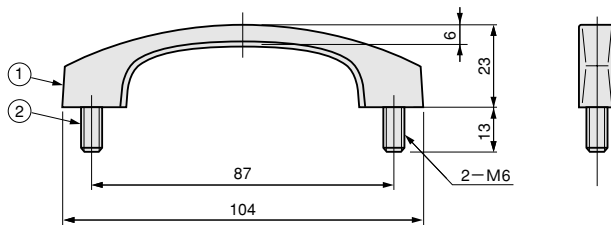
## Specification

Model No.	Type	Allowable Vertical Load kN (kgf)	Net Weight(g)	Code No.	
THA-112-1	With Feet	1.37(140)	57.5	3522	
THA-112-2	Without Feet	1.18(120)	50.0	3523	

※ Tapped depth of THA-112-2: Approx. 8mm.

## Parts List

No.	Part Name	Material	Finish	Quantity
1	U-Shaped Pull (Small) Without Feet	ZDC	Cr	1
2	Headless Screw	S15C	Uc	2



The figure shows the pull with feet.