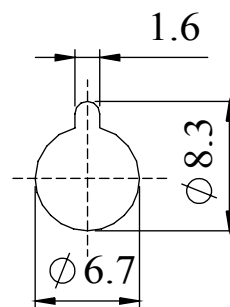
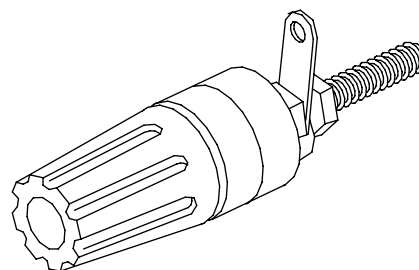
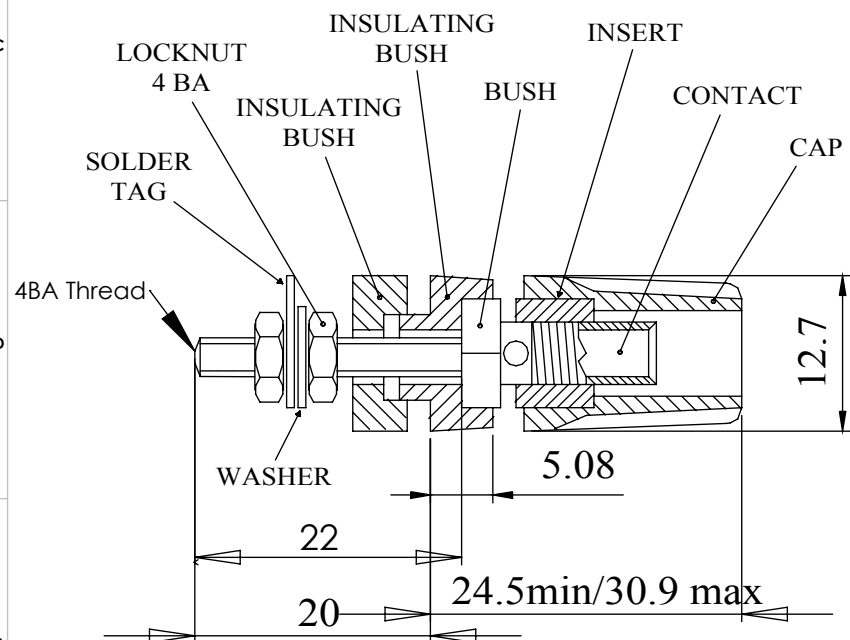


Insulated terminal binding post with a 4mm socket. Panel insulating bushes have a location keyway, maximum panel thickness 12,7mm. Threaded termination supplied with solder tag washer. Thread size 4BA (3.6mm or 0.141 inch)

## Dimensions



PANEL CUT-OUT

## MATERIAL

CAP	: Acetal
CONTACT	: Brass, bright nickel plate
INSERT	: Brass, bright nickel plate
BUSH	: Brass, bright nickel plate
INSULATING BUSHES	: Acetal
LOCKNUT	: Brass, bright nickel plate
WASHER	: Brass, bright nickel plate

SOLDER TAG	: Brass, silver plate
------------	-----------------------

Current Rating	: 16 Amps
Rated Voltage	: 50V

COLOUR	ORDER CODE
BLACK	552-0100
BLUE	552-0200
BROWN	552-0300
GREEN	552-0400
RED	552-0500
WHITE	552-0600
YELLOW	552-0700

Tel No. +44(0)1724 273200 Website [www.dem-uk.com](http://www.dem-uk.com)



**PROPRIETARY AND CONFIDENTIAL**  
 THE INFORMATION CONTAINED IN THIS DRAWING IS THE SOLE PROPERTY OF  
**ALPHA 3 MANUFACTURING.**  
 ANY REPRODUCTION IN PART OR AS A WHOLE WITHOUT THE WRITTEN PERMISSION OF  
**ALPHA 3 MANUFACTURING** IS PROHIBITED.  
**DEM** Manufacturing, Deltron Emcon House  
 Hargreaves Way, Sawcliffe Ind. Park,  
 Scunthorpe, North Lincolnshire, DN15 8RF, UK

UNLESS OTHERWISE SPECIFIED:  
 DIMENSIONS ARE IN MILLIMETRES  
 LINEAR TOLERANCE:  
**NO DECIMAL PLACES ±0.5mm**  
**1 DECIMAL PLACE ±0.25mm**  
**2 DECIMAL PLACES ±0.125mm**  
**ANGULAR TOLERANCE: ±1°**

FINISH	INSULATED TERMINAL	DEBURR AND BREAK SHARP EDGES
	-	-
	IF IN DOUBT ASK DO NOT SCALE DRAWING	
MATERIAL	SEE NOTE	

DRAWN BY	SPB
APPROVED BY	WC
THIRD ANGLE PROJECTION	SHEET 1 OF 1
	SCALE 1:1
	A4

TITLE	GENERAL SPECIFICATION FOR 552 SERIES	
DRAWING NO.	552 SERIES	ISSUE <b>07</b>
		Release

# Mouser Electronics

Authorized Distributor

Click to View Pricing, Inventory, Delivery & Lifecycle Information:

[Deltron:](#)

[552-0500 RED](#)