

HONEYWELL
PART NUMBER

I36PC05G2

REV	DOCUMENT	CHANGED BY	CHECK
3	0064547	NR 20MAY10	RS

GENERAL OPERATING CHARACTERISTICS

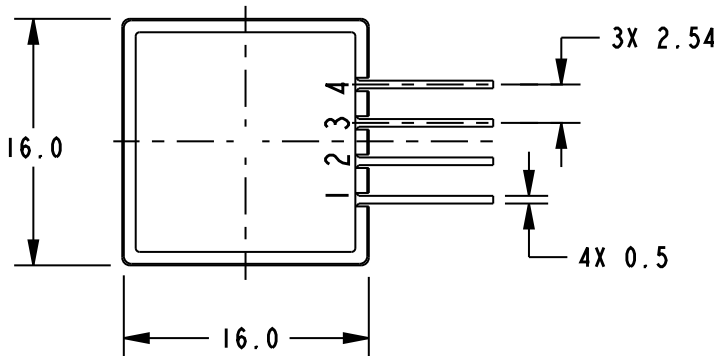
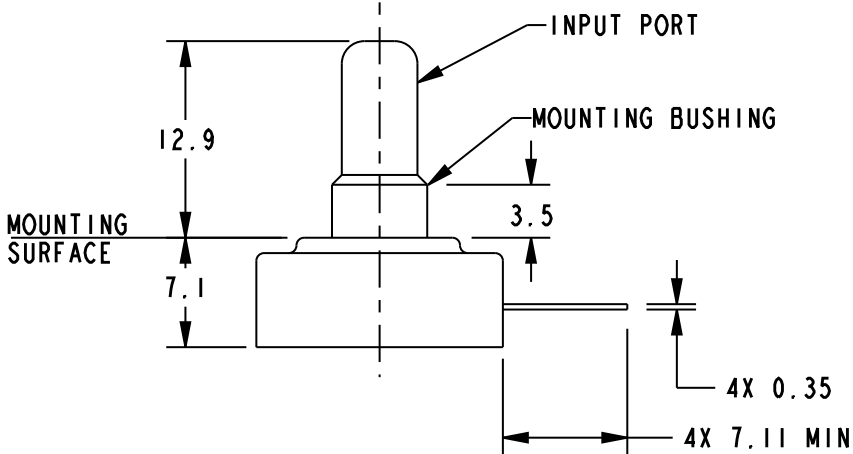
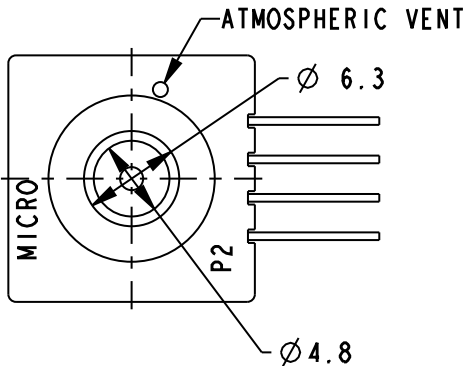
PRESSURE RANGE	0 TO 258 mmHg (0 TO 5 PSIG)
OVERPRESSURE	1035 mmHg (20 PSI)
TEMPERATURE RANGES	
STORAGE	-55° TO +125°C
OPERATE	-40° TO +85°C
COMPENSATED	0°C TO +50°C
SUPPLY VOLTAGE	16 VDC MAX
INPUT RESISTANCE	6800 OHM TYP

ELECTRICAL PERFORMANCE AT 10.00±.01 VDC SUPPLY AND +25°C

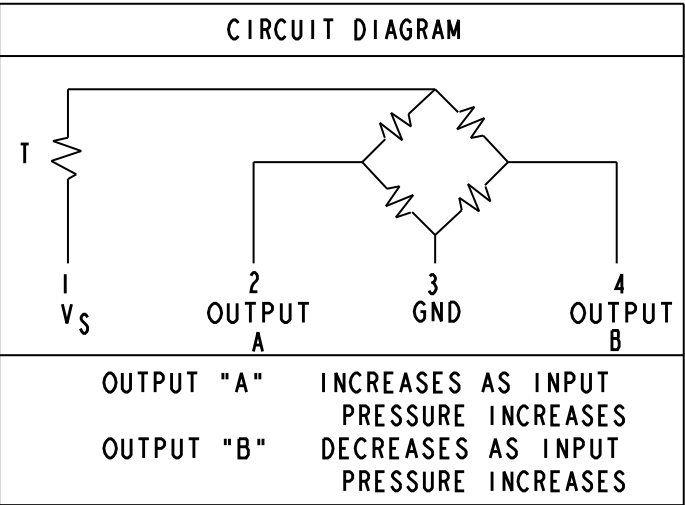
NULL OFFSET	0 ± 1 mV (AT PSI)
F.S.O. /3\	50 ± 1.5 mV (0 TO 5 PSI)
LINEARITY (BFSL)	
INPUT < VENT	± .5% F.S.O. MAX 3
INPUT > VENT	±1.0% F.S.O. MAX 3
HYSTERESIS & REPEATABILITY	± .15% F.S.O. TYP 3

TEMPERATURE ERROR (25°C TO 0°C OR 25°C TO 50°C)

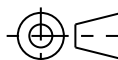
NULL SHIFT	± 4 mV MAX
SENSITIVITY SHIFT	±3.0% F.S.O. MAX 3\



- NOTES
- 1 - TERMINALS ARE PLATED FOR SOLDERING
 - 2 - LIMIT SOLDERING TO 315°C MAX FOR 110 SECONDS MAX
 - 3 - F.S.O. IS THE ALGEBRAIC DIFFERENCE BETWEEN THE OUTPUT END POINTS (NULL AND FULL PRESSURE)
 - 4 - INPUT MEDIA LIMITED ONLY TO THOSE MEDIA THAT WILL NOT ATTACK POLYESTER, SILICON OR SILICONE BASED ADHESIVE



RELEASE NO.: CO-77378

DESIGN UNITS: MM TOLERANCES UNLESS NOTED: NO PLACES X ± 0.76 ONE PLACE .X ± 0.38 TWO PLACE .XX ± 0.15 THREE PLACE .XXX ± - ANGLES X ± - THIRD ANGLE PROJECTION <div></div>	DRAWN	DLT	30 JUL 02	<div>Honeywell</div>				
	CHECK	SAV	30 JUL 02					
	THIS DRAWING COVERS A PROPRIETARY ITEM AND IS THE PROPERTY OF HONEYWELL. THIS DRAWING IS NOT TO BE COPIED OR USED WITHOUT THE PERMISSION OF HONEYWELL.			TITLE <div>BRIDGE PRESSURE SENSOR</div>				
	INTERPRET PER ANSI Y14.5M - 1982 OTHER HONEYWELL ENGINEERING STANDARDS MAY APPLY			SIZE	TYPE	CAGE CODE	DRAWING NAME	REV
				B	I	-	136PC05G2	3
Pro/ENGINEER 2D			SCALE	NONE			SHEET	I OF I