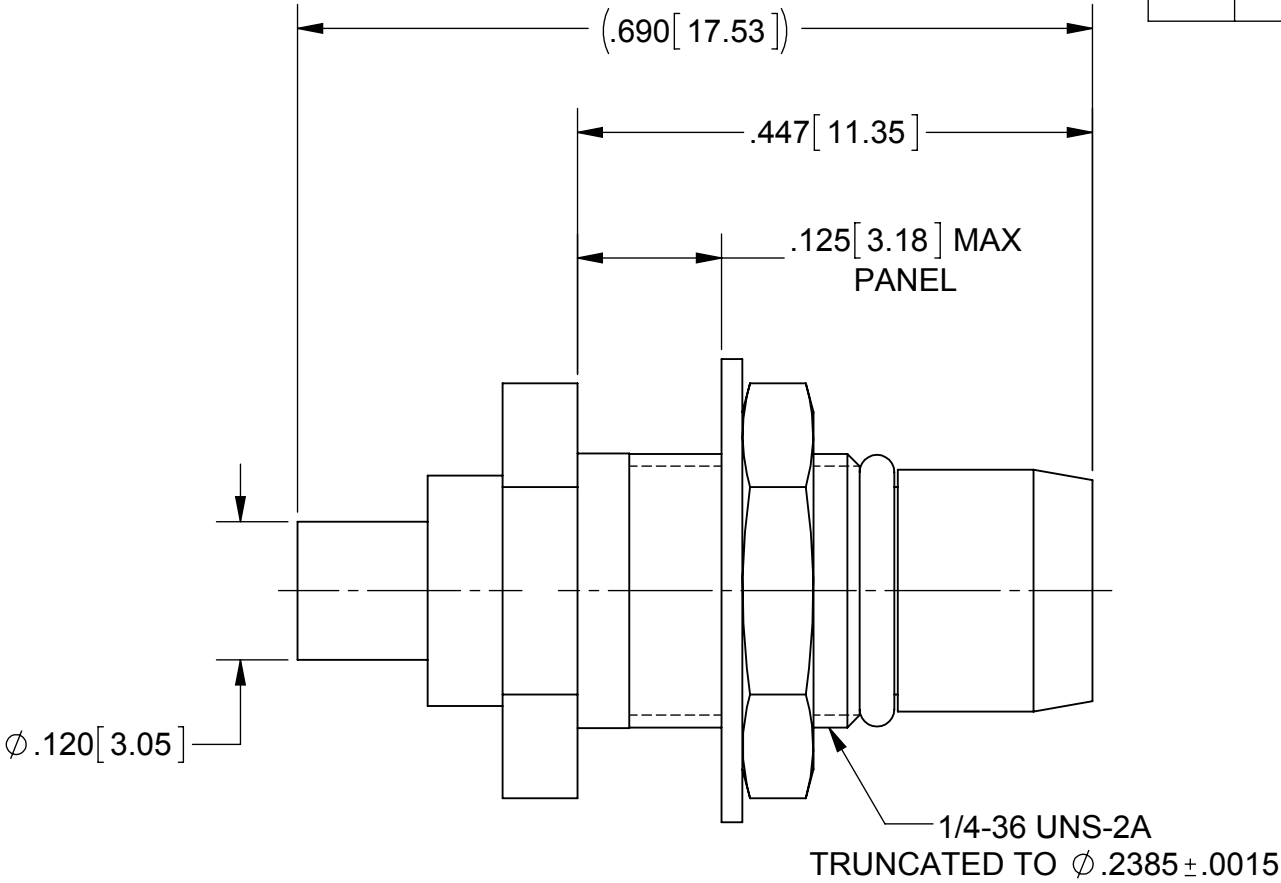
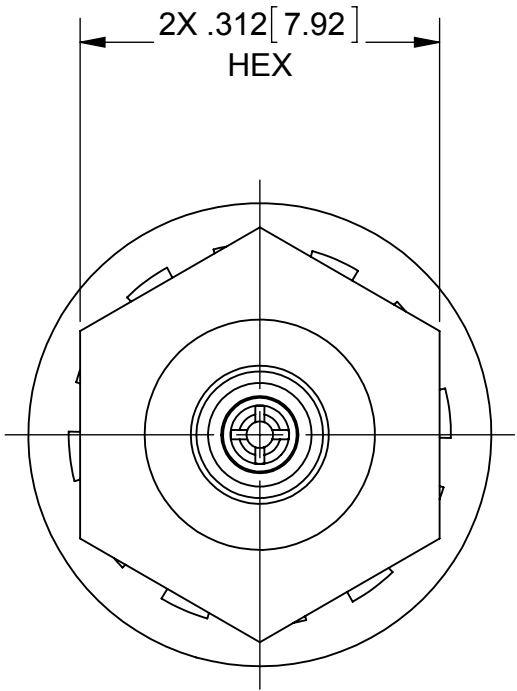


PRODUCT DATA DRAWING

| REVISION HISTORY | | | |
|------------------|-------------|-------|----------|
| REV | DESCRIPTION | DATE | APPROVED |
| A | DCN 41831 | 10/15 | STW |
| | | | |
| | | | |



MATERIAL:

| | |
|-----------------|--|
| BODY & HEX NUT: | BRASS PER ASTM B16, ALLOY UNS No. C36000 |
| CONTACT: | BERYLLIUM COPPER PER ASTM B196, |
| GASKET: | FLUORCARBON RUBBER PER MIL-R-832488 TYPE 1, CLASS 1. |
| INSULATOR: | PTFE PER ASTM D1710, TYPE I, GRADE 1, CLASS B |
| LOCK WASHER: | PHOSPHOR BRONZE PER ASTM-B-103, ALLOY 52100 |

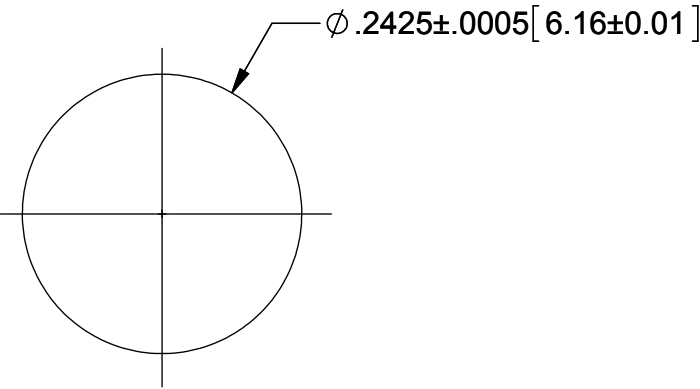
FINISH:

| | |
|-----------------|---|
| BODY & CONTACT: | GOLD PER ASTM B488, TYPE II, CODE C, CLASS .76, OVER NICKEL PER AMS-QQ-N-290, CLASS 1, .00005" MIN. |
|-----------------|---|

| | |
|------------------------|-----------------|
| HEX NUT & LOCK WASHER: | TRI-METAL ALLOY |
|------------------------|-----------------|

PERFORMANCE:

| | |
|--------------|----------------|
| IMPEDANCE: | 50 OHMS |
| FREQ. RANGE: | DC TO 18.0 GHz |



RECOMMENDED MOUNTING HOLE

| | | |
|-----------|-----------|---|
| MATERIAL: | SEE NOTES | DIMENSIONS ARE IN INCHES TOLERANCES: FRACTIONAL: ±1/64 ANGULAR: X° ±1°0' |
|-----------|-----------|---|