

Amphenol® GT Connectors

how to order, connector intermateability

Part Number System								
GT	C	00	A	FF	36-5	P	W	(014)
1	2	3	4	5	6	7	8	

1. Contact Style and Insert Material

C = Crimp
 CN = Crimp with stainless steel
 S = Solder
 SN = Solder with stainless steel
 CY = Crimp with Viton
 SY = Solder with Viton
 CL = Crimp with low smoke/flammable retardant inserts
 SL = Solder with low smoke/flammable retardant inserts
 No designation required for Neoprene components

2. Shell Style

00 - Wall mount receptacle
 01 - Inline receptacle
 02 - Box mount receptacle
 020 - Box mount receptacle with accessory threads
 030 - Square flange receptacle - rear panel mount
 05 - Dummy receptacle
 06 - Straight plug
 062 - Straight plug with deep serrated coupling nut*
 064 - Panel mounted plug with heavy duty coupling nut
 065 - Straight plug with long heavy duty coupling nut
 07 - Jam nut receptacle - rear panel mount
 070 - Jam nut receptacle with accessory threads
 08 - 90° angle plug
 TB - Thru-bulkhead

3. Connector Class - For details, see pages 29-78

A - Adapter for accessory attachment, non-environmental
 AF - Adapter, clamp for individual wires, non-environmental
 CF - Adapter, jacketed cable clamp, environmental
 CFGG - Adapter, jacketed cable clamp, over molded coupling nut, environmental
 CFZ - Adapter, jacketed cable clamp, individual wire sealing grommet, environmental
 F - Adapter, clamp for individual wires, individual wire sealing grommet, environmental.
 G - Adapter for heat shrink tubing, individual wire sealing grommet, environmental
 G2 - Free turning adapter for heat shrink tubing, individual wire sealing grommet, environmental
 GTTB - Thru bulkhead receptacle, accepts mating plug on both sides
 LC - Long adapter, backshell with jacketed cable basket weave grip, with individual wire sealing grommet, environmental
 LCF - Long adapter, jacketed cable clamp, environmental
 LCFZ - Long adapter, jacketed cable clamp, individual wire sealing grommet, environmental
 LT - Adapter, backshell for terminating metallic core conduit
 PFC - Adapter, backshell for plastic corrugated conduit, individual wire sealing grommet, environmental
 PG - Long adapter with PG threads, individual wire sealing grommet, environmental
 PP - Panel mounted plug
 R - Adapter for accessory attachment, individual wire sealing grommet, environmental

R - (02/03) No thread, no accessories, environmental with panel sealing gasket
 R - (020) No accessories, environmental with panel sealing gasket
 RFS - (02) No accessories, countersunk mounting holes for use with over molded coupling nut, environmental with panel sealing gasket
 RFSM - (020) No accessories, countersunk mounting holes for use with over molded coupling nut, environmental with panel sealing gasket
 RV - Adapter, individual wire sealing grommet, environmental
 SB - Adapter for termination of EMI/RFI shielded braid with heat shrink tubing or boot, individual wire sealing grommet, environmental
 SBT - Adapter for termination of EMI/RFI shielded braid with heat shrink tubing or boot, individual wire sealing grommet, environmental
 SL - Long adapter, jacketed cable liquid tight strain relief, environmental

4. Designation for Mounting Hole - Receptacle Only

FF - UN Threads
 FM - Metric Threads
 No designation for standard through hole mounting holes.

5. Shell Size and Arrangement

See pages 2-4

6. Contact Style

P designates pin contacts
 S designates socket contacts

7. Alternate Position

W, X, Y and Z - See page 5.
 No suffix required for normal position.

8. Connector Modification*

Omit for standard olive drab with silver plated contacts
 i.e.: (014) Olive drab cadmium plate, nickel base
 (B30) gold/nickel plated contacts
 (025) Black zinc cobalt
 (027) Conductive black zinc cobalt
 (024) Green zinc cobalt
 (LC) Less contacts

* Consult Amphenol, Sidney, NY

MATEABILITY WITH IDENTICAL CONTACT ARRANGEMENTS

Connector Style	Mateable with Style
GT00	GT06 / 062 / 064 / 065 / 08
GT01	GT06 / 062 / 064 / 065 / 08
GT02	GT06 / 062 / 064 / 065 / 08
GT020	GT06 / 062 / 064 / 065 / 08
GT030	GT06 / 062 / 064 / 065 / 08
GT06 / 062 / 064 / 065	GT00 / 01 / 02 / 020 / 03 / 030 / 05 / 070 / TB
GT07 / 070	GT06 / 062 / 064 / 065 / 08
GT08	GT00 / 01 / 02 / 020 / 03 / 030 / 05 / 070 / TB
GTTB	GT06 / 062 / 064 / 065 / 08

REVISIONS			
ZONE	LTR	DESCRIPTION	DATE
	A	INITIAL RELEASE NUM: 70090-109	
	B	(CLII) SEE ECN 27218	6-22-93 P. H. H. K.
	C	(CLII) CHANGED FROM: 9-3104-5 TO: 9-9238 ECN: 95259	8/2/04 1.5 M. H. H. K.

13	1		10-581819-XX1	SLEEVE	12
12	1		SEE COLUMN	GROMMET	12,10
11	1		10-590986-XX3	ADAPTER	12
10	1		10-748XX-()S	INSERT, SOCKET	4
10	1		10-748XX-()P	INSERT, PIN	4
9	SEE NOTE 8			CONTACT	2,3
8	1		SEE COLUMN	ELBOW ASSEMBLY	3
7	1		10-564869-XX	SLEEVE	
6	1		10-607XX-()	GROMMET	10,13
5	1		10-564859-XX	WASHER, WAVED	
4	1		10-564860-XX	WASHER, SKID	
3	1		10-564843-XX1	GASKET	
2	1		10-564856-XX3	NUT, COUPLING	
1	1		SEE COLUMN	SHELL	

FIND NO.	QTY REQD.	FSCM NO.	PART NUMBER	DESCRIPTION	NOTE REF.
PARTS LIST					
SPECIFICATIONS		SIGNATURES	DATES	AMPHENOL CORPORATION BENDIX CONNECTOR OPERATIONS SIDNEY, N.Y.	
MATERIAL SPEC. N/A		PREPARED PRESCOTT	2/5/90	CONNECTOR, ELECTRICAL PLUG, REVERSE BAYONET COUPLING, TYPE GTC08R()-(), SOLDERLESS	
		CHECKED <i>E. Caban</i>	3/7/90		
		MATERIAL B229	3/2/90		
		APPROVED <i>A. Fry</i>	3/9/90		
PROCESS SPEC. SEE NOTE 5		APPROVED <i>D. New</i>	3-9-90	SIZE	FSCM NO.
		IST PART NO.		C	77820
		71-580420-26P		71-580410/429	
			SCALE	WT.	REF
			NONE		71-581240/259
					SHEET 1 OF 3

SEE SHEET 3.

NOTES:

THE USE OF THIS DOCUMENT IS UNLIMITED.
HOWEVER, DOCUMENTS REFERENCED HEREON
MAY CONTAIN LIMITED RIGHTS DATA.

COMPANY ID: 2
CODED/MS/CUST: Y
INTERNAL: N
LOTNO: N
DATE CODE: 9-3895
SEE PRINT: N

N/A
N/A
NEXT ASSEMBLY

UNLESS OTHERWISE SPECIFIED
LINEAR DIMENSIONS ARE IN
INCHES.

TOLERANCES: .XXX \pm .010,
.XX \pm .03, .X \pm .1,
ANGLES $\pm 2^\circ$.

OTHER STANDARDS PER 9-3800
AND DOD-D-1000.

NOTE REF. = ~~XX~~

COMPUTER GENERATED DRAWING.

00000000 |

01653

TAB.

71-580410/429

4

3

2

1

D

D

C

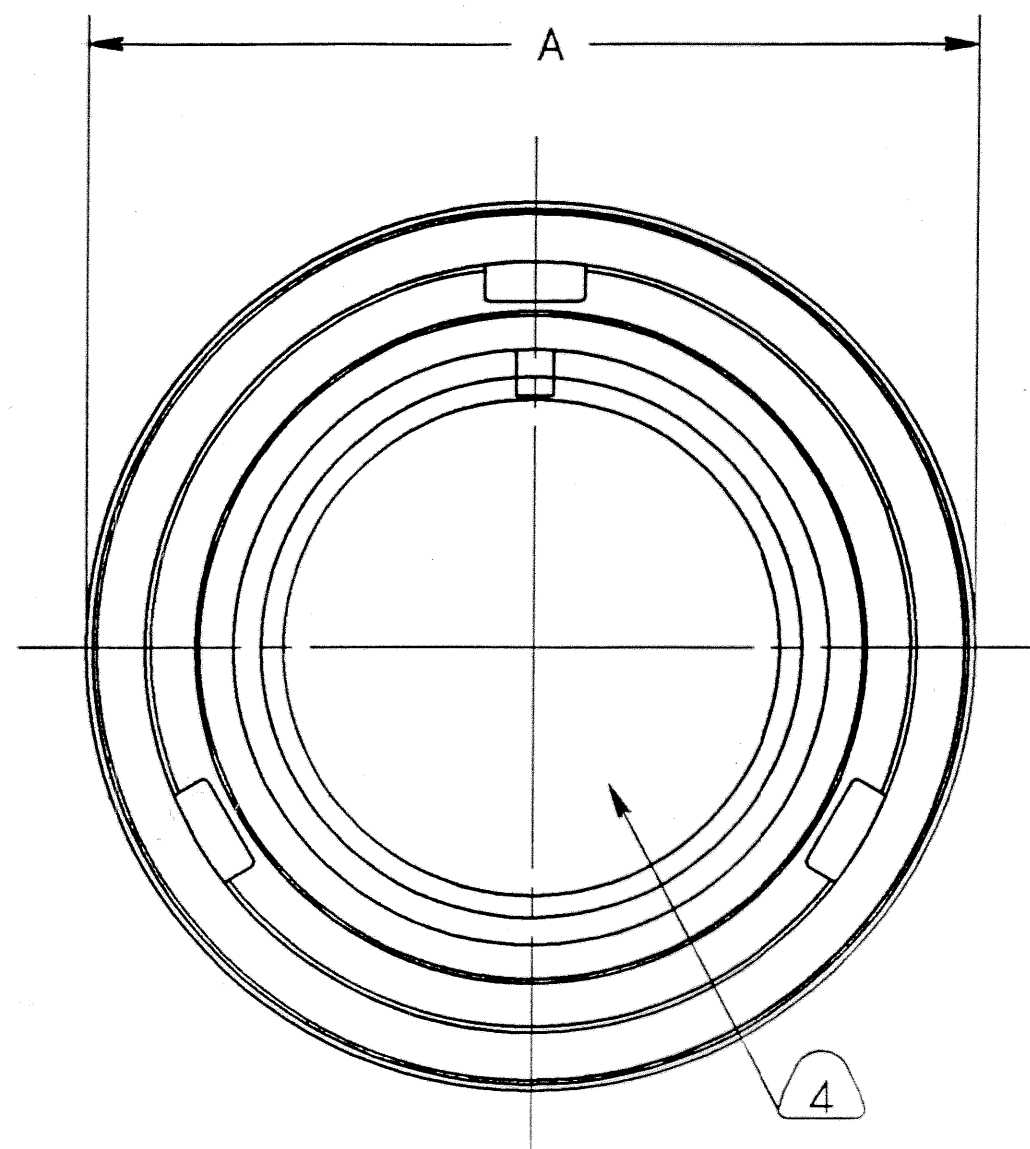
C

B

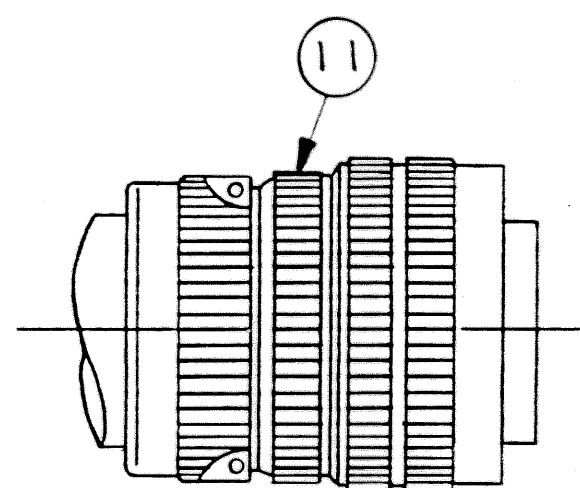
B

A

A



BLACK INK STAMP "BENDIX", GT NUMBER,
(SEE COLUMN), AND DATE CODE, (9-3895)
.062-.094 HIGH PER 9-3856-5.
EXAMPLE:
BENDIX GTC08R20-3S 9052



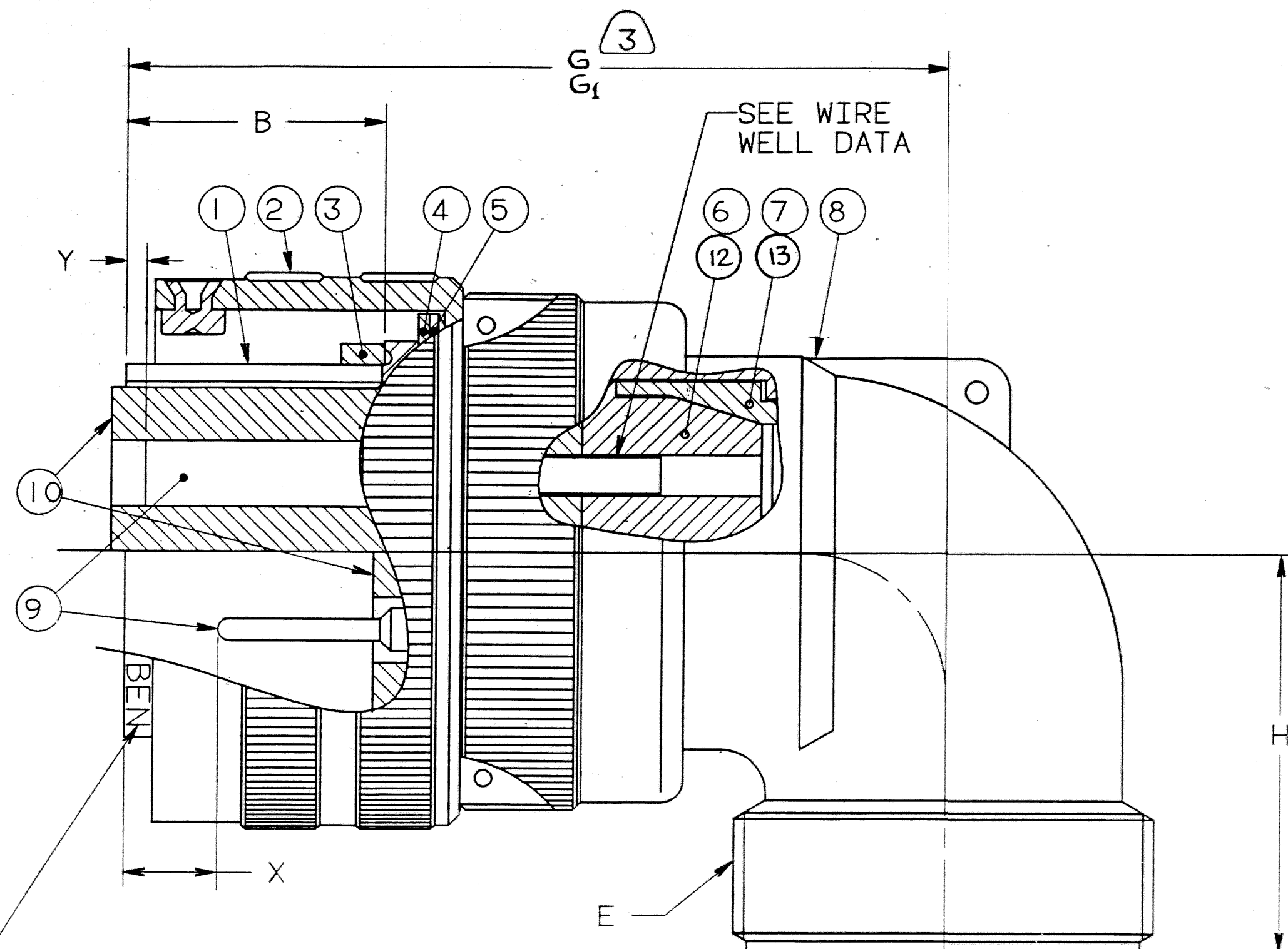
VIEW Z
APPLICABLE ONLY TO
PATTERNS WITH
SIZE 4 & 8 CONTACTS

SEE SHEET 3.

NOTES:

THE USE OF THIS DOCUMENT IS UNLIMITED. HOWEVER, DOCUMENTS REFERENCED
HEREON MAY CONTAIN LIMITED RIGHTS DATA.

COMPUTER GENERATED DRAWING



SIZE	FSCM NO.	REV.
C	77820	71-580410/429
SCALE	WT.	REF.

SHEET 2 OF 3

3/07/90 10:29 * 90066 10:19 * PRELSE * 71-580410/429 A002

4

3

2

1

ASSEMBLY
NUMBER

SHELL
SIZE

GT
NUMBER

SHELL

GROMMET

ELBOW
ASSEMBLY


A
DIA
MAX

B
±.005

E
THREAD
CLASS 2A
(PLATED)

G
MAX

H
MAX

G1
MAX


71-580410-()
71-580411-()
71-580412-()

8S
10S
10SL

NOT AVAILABLE
NOT AVAILABLE
GTC08R10SL-()

10-580915-113

10-581825-()

10-580892-113

.897

.531

.6250-24UNEF

1.772

1.181

71-580413-()
71-580414-()
71-580415-()

12S
12
14S

NOT AVAILABLE
NOT AVAILABLE
GTC08R14S-()

10-37266-14

10-581827-()

10-580892-143

1.150

.531

.7500-20UNEF

1.850

1.181

71-580416-()
71-580417-()
71-580418-()

14
16S
16

NOT AVAILABLE
GTC08R16S-()
GTC08R16-()

10-37266-16
10-37266-17

10-581829-()
10-581830-()

10-580892-163
10-580892-173

1.300
1.300

.531
.719

.8750-20UNEF
.8750-20UNEF

1.890
2.244

1.181
1.181

3.056

71-580419-()
71-580420-()
71-580421-()

18
20
22

GTC08R18-()
GTC08R20-()
GTC08R22-()

10-37266-18
10-37266-20
10-37266-22

10-581831-()
10-581832-()
10-581833-()

10-580892-183
10-580892-203
10-580892-223

1.437
1.571
1.697

1.0000-20UNEF
1.1875-18UNEF
1.1875-18UNEF

2.283
2.401
2.401

1.377
1.377
1.377

3.095
3.213
3.415

71-580422-()
71-580423-()
71-580424-()

24
28
32

GTC08R24-()
GTC08R28-()
GTC08R32-()

10-37266-24
10-37266-28
10-37266-32

10-581834-()
10-581835-()
10-581836-()

10-580892-243
10-580892-283
10-580892-323

1.835
2.102
2.366

1.4375-18UNEF
1.4375-18UNEF
1.7500-18UNS

2.598
2.598
2.835

1.575
1.575
1.771

3.232
3.692
3.908

71-580425-()
71-580426-()
71-580427/429-()

36
40
NOT AVAILABLE

GTC08R36-()
GTC08R40-()
NOT AVAILABLE

10-37266-36
10-37266-40

10-581837-()
10-581838-()

10-580892-363
10-580892-403

2.610
2.850

2.0000-18UNS
2.2500-16UN

2.952
3.071

1.968
2.165

4.171
4.280

TO COMPLETE, ADD APPLICABLE INSERT
ARRANGEMENT SUFFIX PER 9-2437.

SEE NOTE 10

13. INDICATED ITEMS, (F/N'S 6 & 7), ARE APPLICABLE TO CONNECTORS
CONTAINING CONTACT ARRANGEMENTS OTHER THAN THOSE
SPECIFIED IN NOTE 12.

12. INDICATED ITEMS, (F/N'S 11, 12 & 13), ARE APPLICABLE TO CONNECTORS
CONTAINING CONTACT SIZES 4 & 8.

11. INDICATED LENGTH APPLIES TO CONNECTORS WITH CONTACT
PATTERNS CONTAINING SZ 4 OR 8 CONTACTS.

10. TO COMPLETE GROMMET PART NO., ADD APPLICABLE
ARRANGEMENT SUFFIX.

9. PACKAGE PER PRODUCTION PROCESS SHEET.

8. SEE SEPARATE PARTS LIST FOR COMPONENT PART NUMBERS
AND QUANTITIES.

7. FOR MATING CONNECTOR ASSEMBLIES, SEE 71-580960/979
AND OTHERS.

6. SEE WORK ORDER FOR PERMISSIBLE ADDITIONAL OR
ALTERNATE STAMPING.

5. PROCESS SPEC:
ASSY 9-9038
TEST 9-3106-18
9-3856-5, 9-3895, 9-2437

4. INSERTS ARE NOT REMOVABLE.

3. DRAWING ILLUSTRATES FINAL ASSEMBLY. FOR STORAGE AND
SHIPPING, ELBOW ASSEMBLY MUST BE LOOSELY COUPLED.
CONTACTS ARE SHIPPED UNASSEMBLED. FOR FINAL INSTALL-
ATION, CONTACTS MUST BE ASSEMBLED INTO ALL INSERT
HOLES. ALL UNUSED GROMMET HOLES MUST BE FILLED WITH
THE APPROPRIATE SIZE SEALING PLUG.

2. FOR CONTACT SIZE, SPACING AND SERVICE RATING, SEE
MIL-STD-1651 OR L-11908-() THRU L-11948-().

1. UNIT MEETS THE APPLICABLE REQUIREMENTS OF MIL-C-5015.

CONTACT
SIZE

SHELL
SIZE

X

Y
±.040

16 SHORT

10SL, 14S, 16S

.087±.039

.079

16 LONG

16 THRU 40

.260^{+.052}_{-.041}

.102

12

16 THRU 40

.118^{+.039}_{-.056}

.102

4, 8, 0

16 THRU 40

.091±.039

.102

CONTACT SIZE

0

4

8

12

16

WELL DIA

.453±.005

.281^{+.005}_{-.004}

.179^{+.004}_{-.002}

.098^{+.004}_{-.001}

.063^{+.004}_{-.001}

WELL DEPTH

^{+.031}_{-.000}

.592

.500

.500

.250

.250

NOTES:

THE USE OF THIS DOCUMENT IS UNLIMITED. HOWEVER, DOCUMENTS REFERENCED
HEREON MAY CONTAIN LIMITED RIGHTS DATA.

SIZE
C

FSCM NO.
77820

71-580410/429

SCALE
NONE

WT.

REF
N/A

SHEET
3

REV.
C

COMPUTER GENERATED DRAWING

IMAGED / Dec 20 2004, 02:05 PM

TAB.

71-580410/429