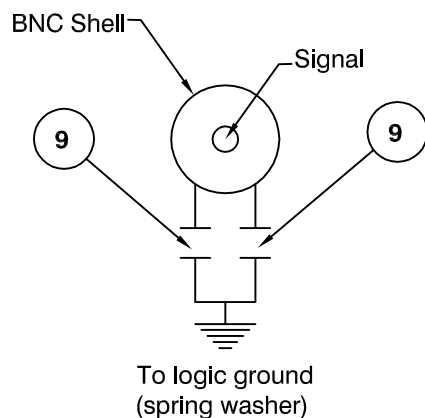
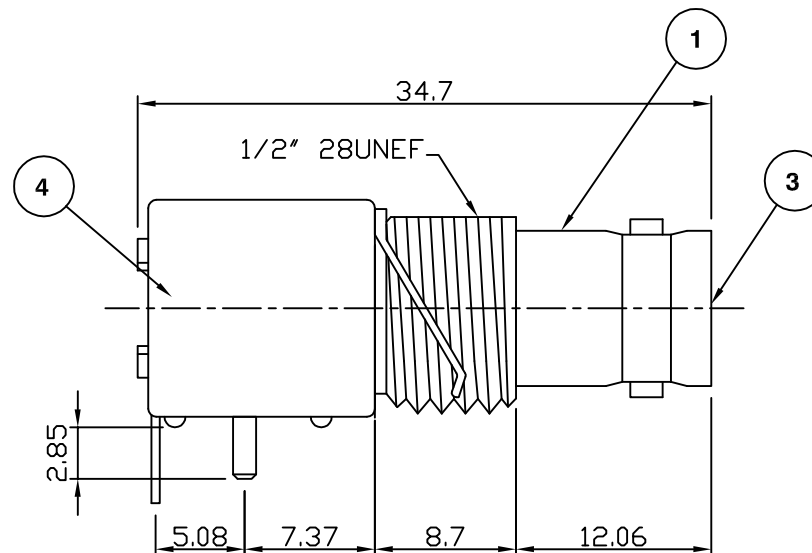
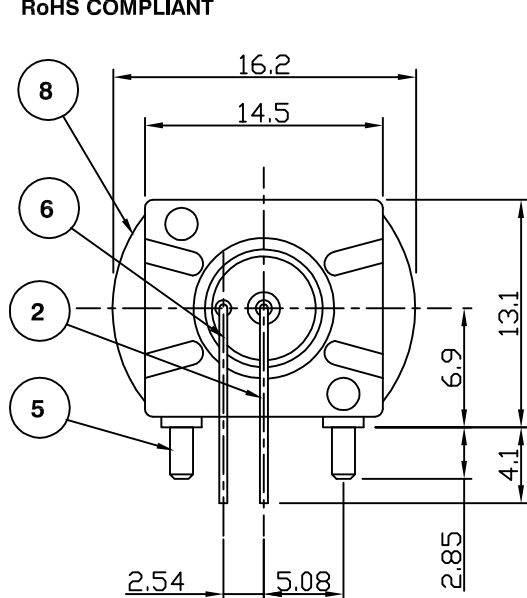
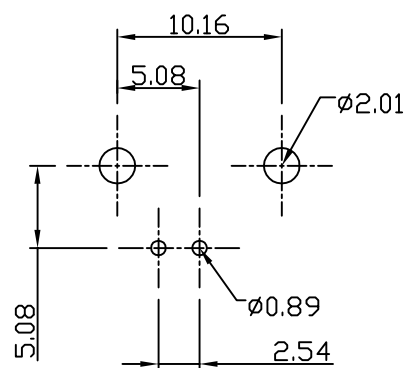


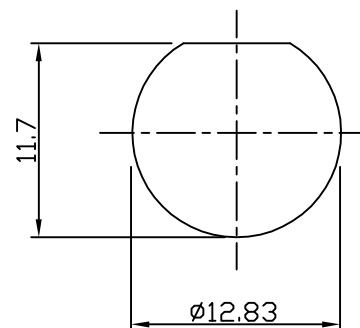
RoHS COMPLIANT



Capacitor Circuit Diagram



Recommended PCB Layout



Panel Cutout

Electrical Characteristics

Nominal Impedance:	75 ohms
Frequency Range:	DC to 1 GHz
Operating Voltage (rms):	500 V maximum at sea level
Dielectric Withstand Voltage (rms):	500 V maximum at sea level
Contact Resistance:	3.0 milliohms maximum
Insulation Resistance:	5000 megohms minimum

Mechanical Characteristics

Mating Cycles:	500 cycles minimum
Interface Dimensions:	Conform to MIL-C-39012

Environmental Characteristics

Temperature Range:	-65 °C to +165 °C
--------------------	-------------------

PART	DESCRIPTION
1 Body	Nickel Plating over Zinc Alloy
2 Centre Contact	Phosphor Bronze with Gold Plating at contact area, Tin Plating at tail.
3 Inner Insulator	Polypropylene UL 94HB
4 Housing	PBT +30% Glass Fibre (UL:94V-0)
5 Mounting Post	Tin Plating over Brass
6 Grounding Terminal	Tin Plating over Copper Wire
7 Rivet	Nickel Plating over Brass
8 Spring Washer	Nickel Plating over Phosphor Bronze
9 Ceramic Chip Capacitor	4700pF $\pm 10\%$

Updated for RoHS compliance	JW	3	04 Apr 06
CAD Issue	SN	2	04 Feb 02
First Issue	AT	1	24 Nov 95
DESCRIPTION OF REVISION	APPVD	ISS	DATE

EMERSON Network Power

Connectivity Solutions
7-13 Russel Way,
Widford Industrial Estate,
Chelmsford, Essex,
CM1 3AA, UK.
Tel: +44 (0) 1245 359515
Fax: +44 (0) 1245 358938

SCALE: Not To Scale
DIMENSIONS: mm
TOLERANCES:
 $\pm 0.2\text{mm}$ unless
otherwise stated

DRAWN BY: J Williams
CHECKED BY: M Terry
APPROVED BY: A Tusi
DATE: 04 Apr 06

TITLE:
Low Profile BNC Right Angle
PCB Mount Filter Jack

PART NUMBER:
VBF211-75

PAGE: 1 of 1