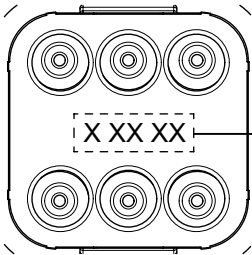
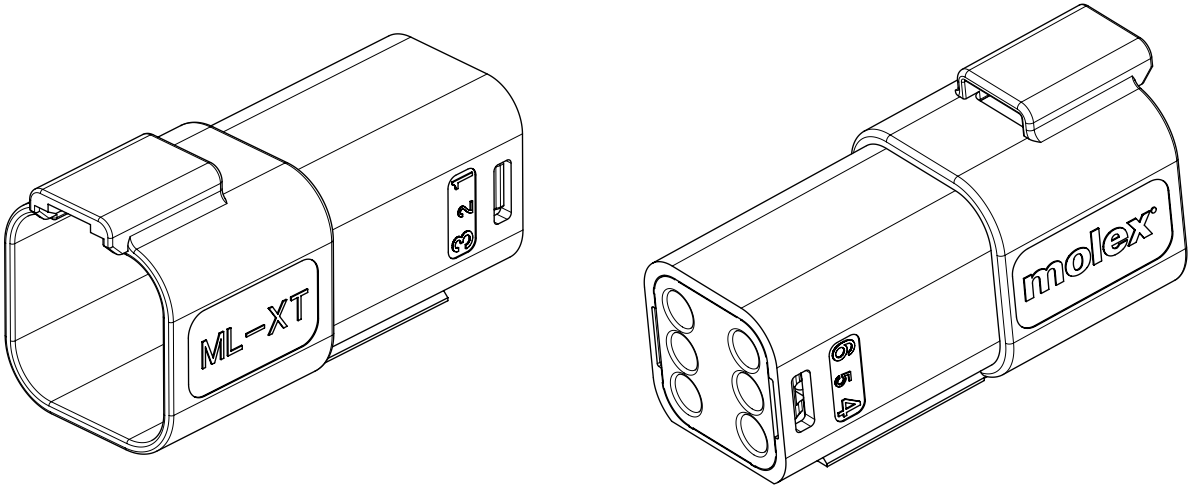




6CCT RECEPTACLE CONNECTOR



DETAIL B  
SCALE 2:1

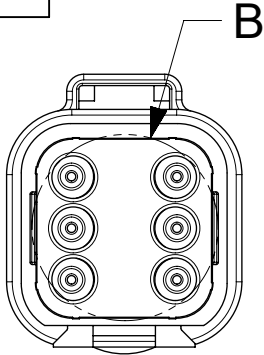
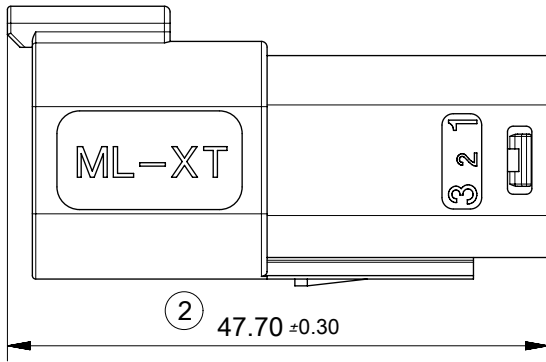
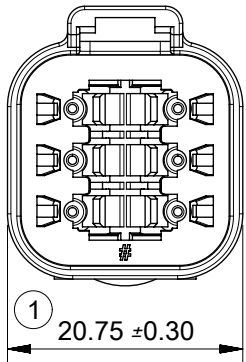
DATE CODE: X XX XX  
X — DAY: 1 - 7

X — WEEK: 01 - 52

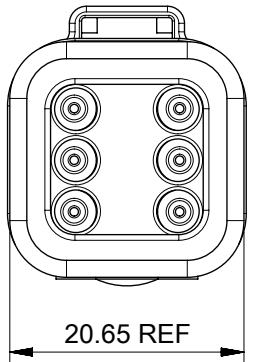
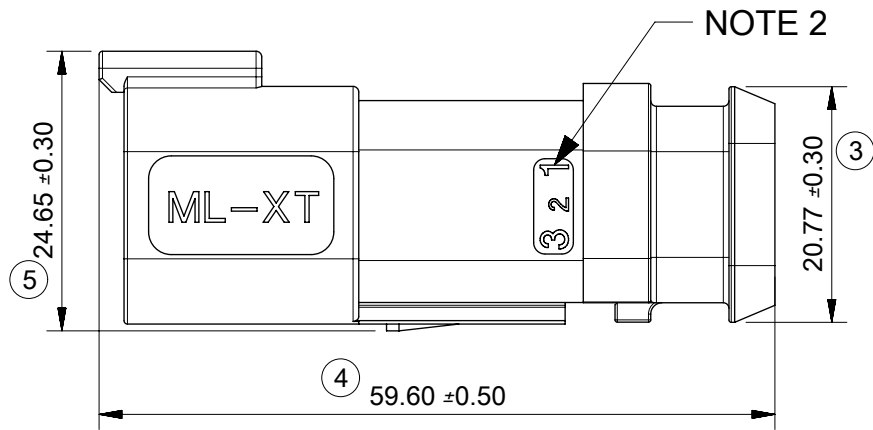
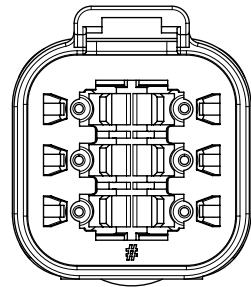
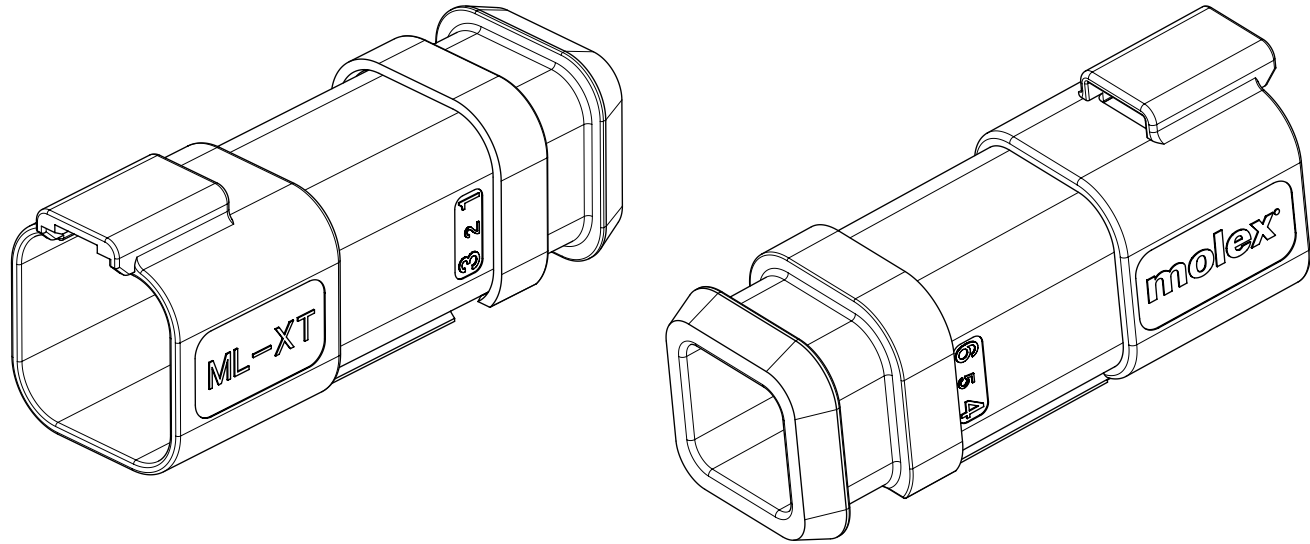
X — YEAR: 00 - 99

# — MACHINE NO. 1





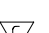
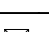
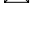
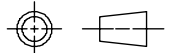



EXAMPLE: 11315 = DAY 1, WEEK 13, YEAR 15  
i.e. 23rd OF MARCH 2015



6CCT RECEPTACLE CONNECTOR WITH  
HEATSHRINK HOUSING ULTRASONICALLY  
WELDED IN PLACE



1. MATERIAL  
HOUSING: NYLON 30%GF  
BACK SEAL: HIGH CONSISTENCY RUBBER
  2. CIRCUIT IDENTIFICATION
  3. JACKET RANGE LARGE = Ø2.7MM TO 3.6MM (SEAL COLOUR: LIGHT BLUE)  
JACKET RANGE SMALL = Ø1.4MM TO 2.7MM (SEAL COLOUR: BURNT ORANGE)
  4. SEE SHEET 3 FOR FINAL PART NUMBER
  5. SEE 934430010 PS P FOR PRODUCT SPECIFICATION
  6. SEE 934430002 PS K OR 934430010 PS K FOR PACKAGING SPECIFICATION
- INSPECTION NUMBERS 1 - 50 RESERVED FOR SHEET 2  
LAST INSPECTION NO. 5

QUALITY SYMBOLS		THIS DRAWING CONTAINS INFORMATION THAT IS PROPRIETARY TO MOLEX ELECTRONIC TECHNOLOGIES, LLC AND SHOULD NOT BE USED WITHOUT WRITTEN PERMISSION											
 = 0	SEE LONG TEXT	EC NO: 110489 DRWN: JFLETCHER CHK'D: FDUGGAN APPR: JDWALLACE	2016/11/16 2016/11/18 2017/01/03	GENERAL TOLERANCES (UNLESS SPECIFIED)		DIMENSION UNITS		SCALE		<div>molex</div> <div>6CCT ML-XT CV CONNECTOR</div> <div>PRODUCT CUSTOMER DRAWING</div>			
 = 0						MM		1.5:1					
 = 0						DRWN BY JFLETCHER DATE 2015/11/04							
 = 0				ANGULAR TOL ± 2.0 °		CHK'D BY FDUGGAN DATE 2015/12/07							
 = 0				4 PLACES ±		APPR BY JDWALLACE DATE 2015/12/08		SERIES 93443	MATERIAL NUMBER SEE CHART				
 = 0				3 PLACES ±		DRAWING SIZE A3				THIRD ANGLE PROJECTION			
 = 0				2 PLACES ± 0.1		DRAFT WHERE APPLICABLE MUST REMAIN WITHIN DIMENSIONS		A3					
 = 0				1 PLACE ± 0.2									
 = 0				0 PLACES ±									
 = 0				A2	REV	<div>DOCUMENT NUMBER 934430040</div> <div>DOC TYPE PSD</div> <div>DOC PART 000</div> <div>SHEET NUMBER 2 OF 7</div>							



E

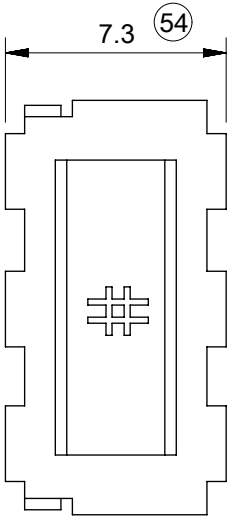
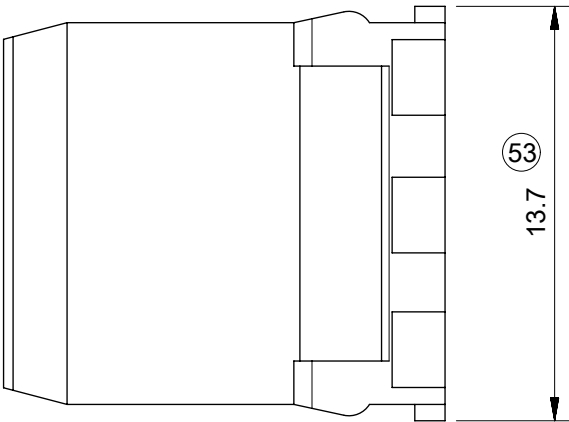
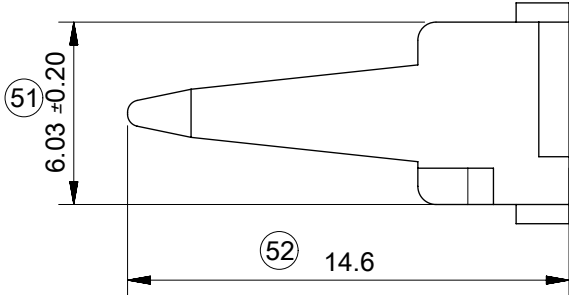
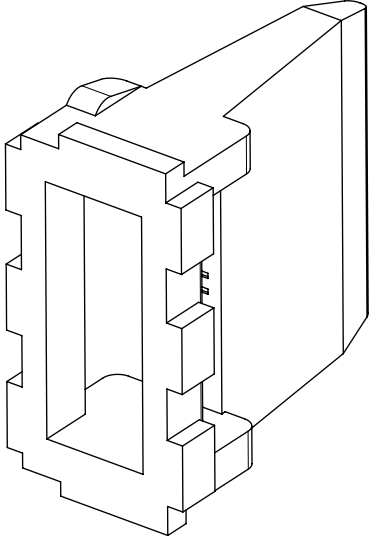
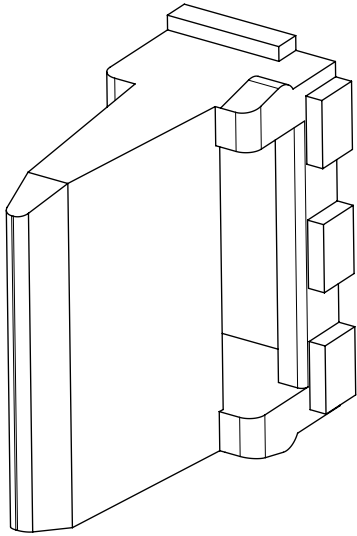
D

C

B

A

A



6CCT RECEP. WEDGELOCK

SERIES NO.

93447

CIRCUIT SIZE  
4 = 6CCT

4

0

--

COLOUR/CODING  
03 = GREEN (NO KEY)

NOTES  
1. MATERIAL  
HOUSING: NYLON 30%GF  
INSPECTION No's 51-100 RESERVED FOR SHEET 4  
LAST INSPECTION No. 54

RELEASE STATUS	ER	RELEASE DATE	18.11.2016	14:27:41
----------------	----	--------------	------------	----------

QUALITY SYMBOLS		THIS DRAWING CONTAINS INFORMATION THAT IS PROPRIETARY TO MOLEX ELECTRONIC TECHNOLOGIES, LLC AND SHOULD NOT BE USED WITHOUT WRITTEN PERMISSION									
	= 0	SEE LONG TEXT EC NO: 110489 DRWN: JFLETCHER CHK'D: FDUGGAN REV APPR: JDWALLACE	2016/11/16 2016/11/18 2017/01/03	GENERAL TOLERANCES (UNLESS SPECIFIED) ANGULAR TOL ± 2.0 °		DIMENSION UNITS	SCALE				
	= 0					MM	4:1				
	= 0					DRWN BY	DATE				
	= 0					JFLETCHER	2015/11/04				
	= 0					CHK'D BY	DATE				
	= 0					FDUGGAN	2015/12/07				
	= 0					APPR BY	DATE	PRODUCT CUSTOMER DRAWING			
	= 0					JDWALLACE	2015/12/08	SERIES	MATERIAL NUMBER	CUSTOMER	
	= 0					DRAWING SIZE	THIRD ANGLE PROJECTION	93443	SEE CHART	GENERAL MARKET	
	= 0							DOCUMENT NUMBER		DOC TYPE	DOC PART
	= 0	A2	REV	DRAFT WHERE APPLICABLE MUST REMAIN WITHIN DIMENSIONS		A3		934430040	PSD	000	SHEET NUMBER
	= 0										4 OF 7

E

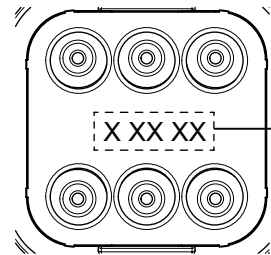
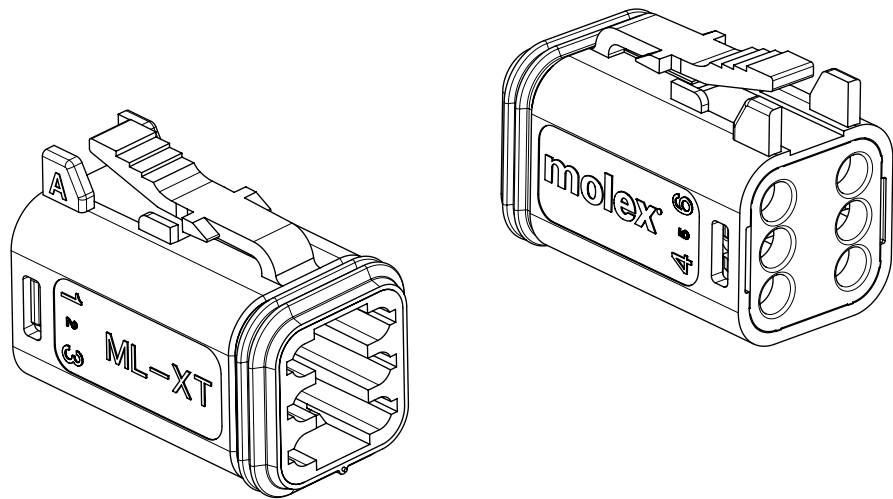
D

C

B

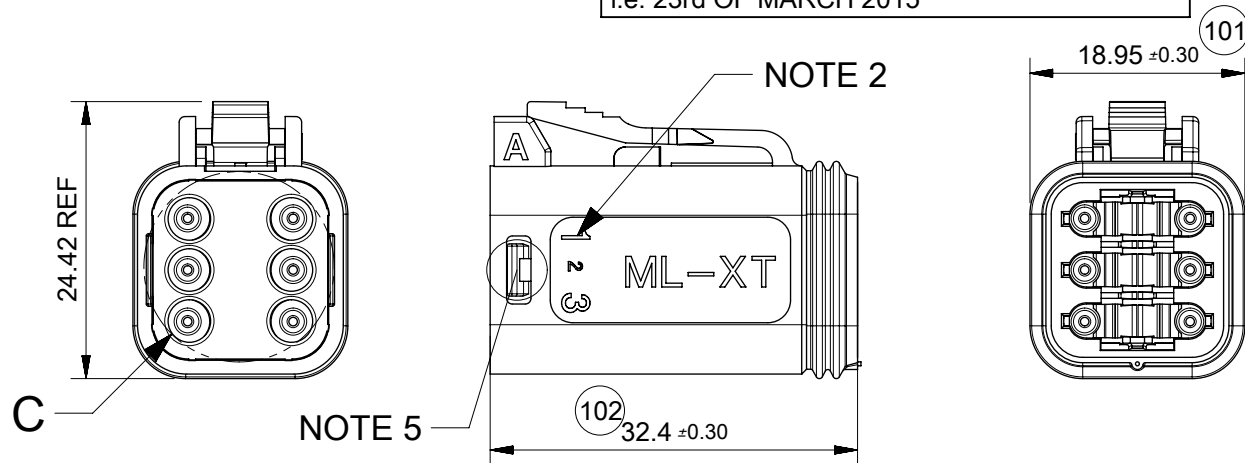
A

6CCT PLUG CONNECTOR



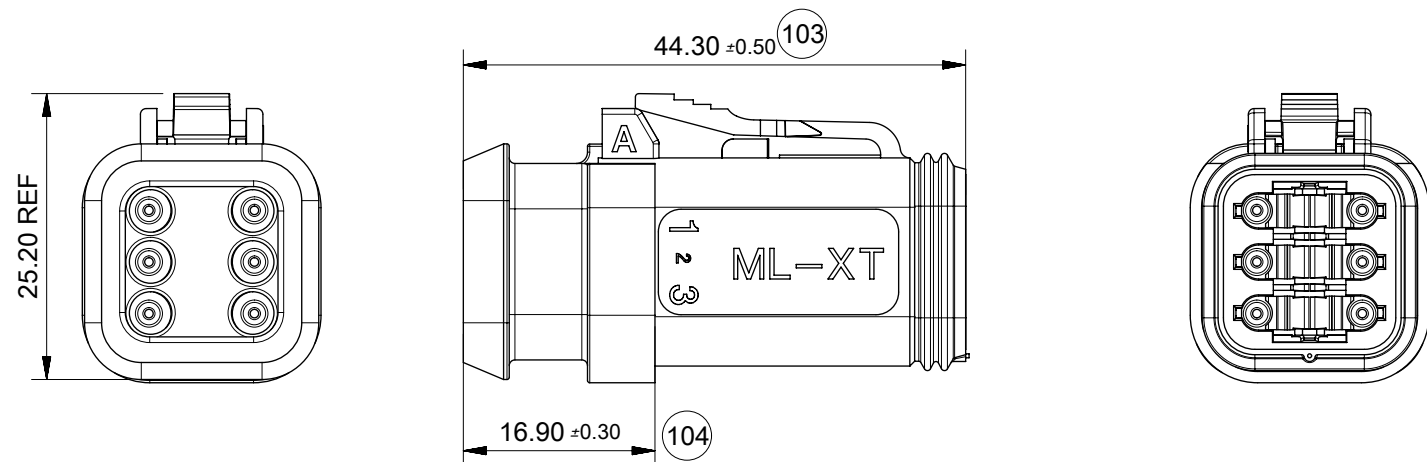
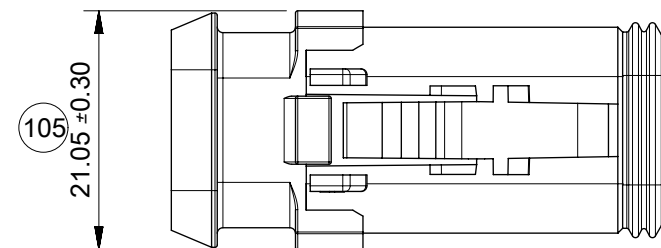
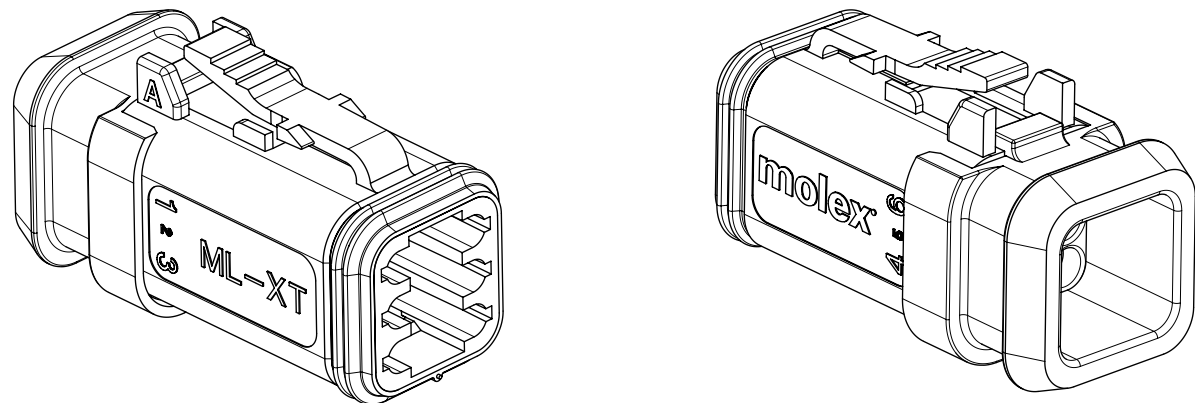
DETAIL C  
SCALE 2:1

DATE CODE: X XX XX  
X — DAY: 1- 7  
  
X — WEEK: 01 - 52  
X — YEAR: 00 - 99  
# — MACHINE NO. 1  
  
EXAMPLE: 11315 = DAY 1, WEEK 13, YEAR 15  
i.e. 23rd OF MARCH 2015



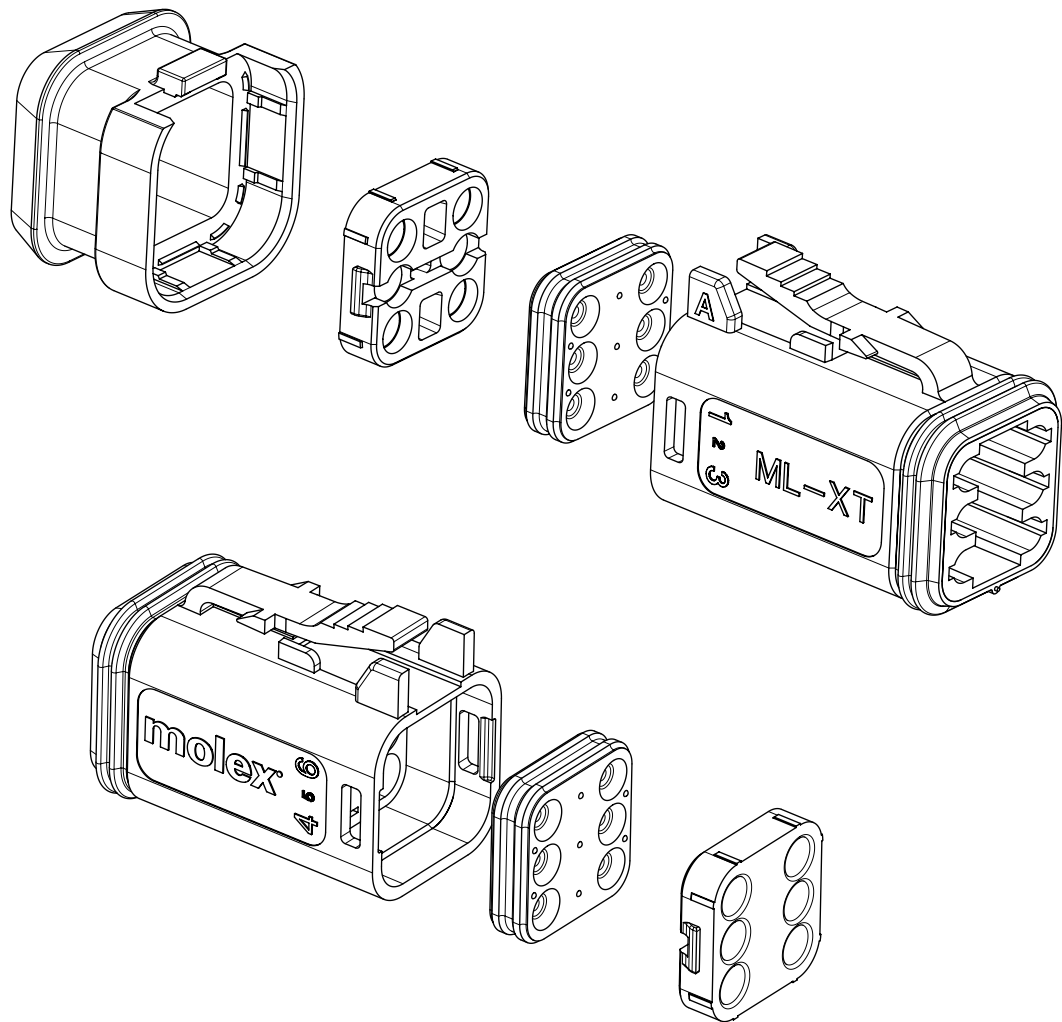
- NOTES
- MATERIAL:  
HOUSING: NYLON 30% GF  
PLUG SEAL: SILICONE RUBBER  
BACK SEAL: HIGH CONSISTENCY RUBBER
  - CIRCUIT IDENTIFICATION
  - JACKET RANGE LARGE = Ø2.7MM TO 3.6MM (SEAL COLOUR: LIGHT BLUE)  
JACKET RANGE SMALL = Ø1.4MM TO 2.7MM (SEAL COLOUR: BURNT ORANGE)
  - SEE SHEET 6 FOR FINAL PART NUMBER DESIGNATION
  - LATCH TO BE FULLY ENGAGED IN WINDOW  
INSPECTION NUMBERS 101-150 RESERVED FOR SHEET 5  
LAST INSPECTION NUMBER 105

6CCT PLUG CONNECTOR WITH  
HEATSHRINK HOUSING ULTRASONICALLY  
WELDED IN PLACE



QUALITY SYMBOLS		THIS DRAWING CONTAINS INFORMATION THAT IS PROPRIETARY TO MOLEX ELECTRONIC TECHNOLOGIES, LLC AND SHOULD NOT BE USED WITHOUT WRITTEN PERMISSION															
	= 0	SEE LONG TEXT EC NO: 110489 DRWN: JFLETCHER CHK'D: FDUGGAN APPR: JDWALLACE REV A2	2016/11/16 2016/11/18 2017/01/03	GENERAL TOLERANCES (UNLESS SPECIFIED)  ANGULAR TOL ± 2.0 °  4 PLACES ±  3 PLACES ±  2 PLACES ± 0.1  1 PLACE ± 0.2  0 PLACES ±  DRAFT WHERE APPLICABLE MUST REMAIN WITHIN DIMENSIONS		DIMENSION UNITS		SCALE		  6CCT ML-XT CV CONNECTOR							
	= 0					MM		1.5:1									
	= 0					DRWN BY		DATE									
	= 0					JFLETCHER		2015/11/04		CHK'D BY		DATE		PRODUCT CUSTOMER DRAWING			
	= 0					FDUGGAN		2015/12/07		APPR BY		DATE					
	= 0					JDWALLACE		2015/12/08		DRAWING SIZE		THIRD ANGLE PROJECTION					
	= 0					A3				SERIES		MATERIAL NUMBER		CUSTOMER			
	= 0					93443		SEE CHART		GENERAL MARKET							
	= 0					DOCUMENT NUMBER		DOC TYPE		DOC PART		SHEET NUMBER					
	= 0					934430040		PSD		000		5 OF 7					

987654321



6CCT PLUG CONNECTOR

93445

4

-

--

SERIES No. \_\_\_\_\_

CIRCUIT SIZE  
4 = 6CCT

- ASSEMBLY OPTIONS:
- 1 = PLUG ASSEMBLY FOR WIRE JACKET RANGE: Ø1.4mm-2.7mm (NOTE 2)
  - 2 = PLUG ASSEMBLY FOR WIRE JACKET RANGE: Ø2.7mm-3.6mm (NOTE 2)
  - 5 = PLUG ASSEMBLY & HEATSHRINK FOR WIRE JACKET RANGE: Ø1.4mm-2.7mm
  - 6 = PLUG ASSEMBLY & HEATSHRINK FOR WIRE JACKET RANGE: Ø2.7mm-3.6mm

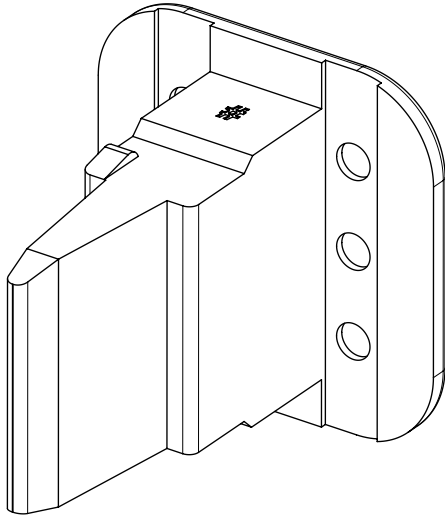
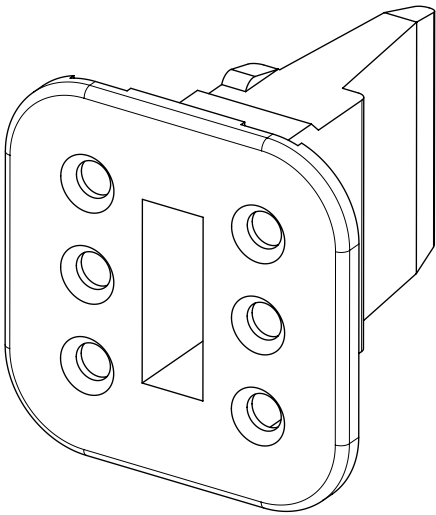
COLOUR  
01=BLACK  
02=GREY 06=WHITE  
03=GREEN 07=BROWN  
04=BLUE 08=ORANGE  
05=YELLOW 09=RED

EXAMPLE:  
6cct PLUG BLACK WITH LARGE SEAL AND HEATSHRINK = 93444-4601

- NOTES
- SEE SHEET 5 FOR UNSPECIFIED NOTES AND DIMENSIONS
  - BACK COVER HOUSING COLOUR BLACK
  - HEATSHRINK HOUSING COLOUR BLACK

THIS DRAWING CONTAINS INFORMATION THAT IS PROPRIETARY TO MOLEX ELECTRONIC TECHNOLOGIES, LLC AND SHOULD NOT BE USED WITHOUT WRITTEN PERMISSION														
QUALITY SYMBOLS		SEE LONG TEXT	2016/11/16 2016/11/18 2017/01/03	EC NO: 110489 DRWN: JFLETCHER CHK'D: FDUGGAN APPR: JDWALLACE	GENERAL TOLERANCES (UNLESS SPECIFIED)  ANGULAR TOL ± 2.0 °		DIMENSION UNITS		SCALE		<div>molex</div>  6CCT ML-XT CV CONNECTOR			
<div><div>FA</div>= 0</div> <div><div>FE</div>= 0</div> <div><div>FDP</div>= 0</div> <div><div>▼</div>= 0</div> <div><div>▽</div>= 0</div> <div><div>⊠</div>= 0</div> <div><div>■</div>= 0</div> <div><div>▽</div>= 0</div>							MM		1:1					
							DRWN BY		DATE					
							JFLETCHER		2015/11/04					
							CHK'D BY		DATE					
FDUGGAN							2015/12/07							
APPR BY							DATE		PRODUCT CUSTOMER DRAWING					
JDWALLACE							2015/12/08							
DRAWING SIZE							THIRD ANGLE PROJECTION							
A3									SERIES		MATERIAL NUMBER		CUSTOMER	
A2		REV		93443		SEE CHART		GENERAL MARKET						
				DOCUMENT NUMBER		DOC TYPE		DOC PART		SHEET NUMBER				
				934430040		PSD		000		6 OF 7				

E



6CCT PLUG WEDGELOCK

SERIES NO.

93448

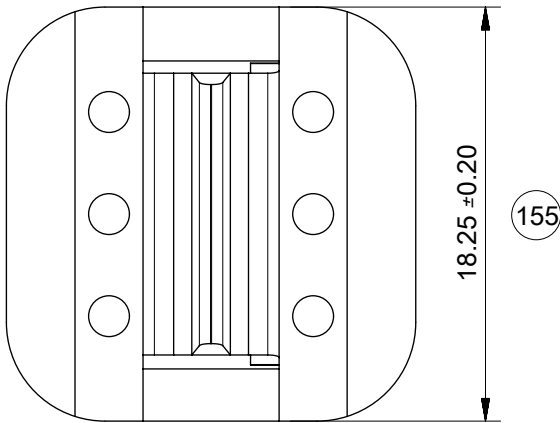
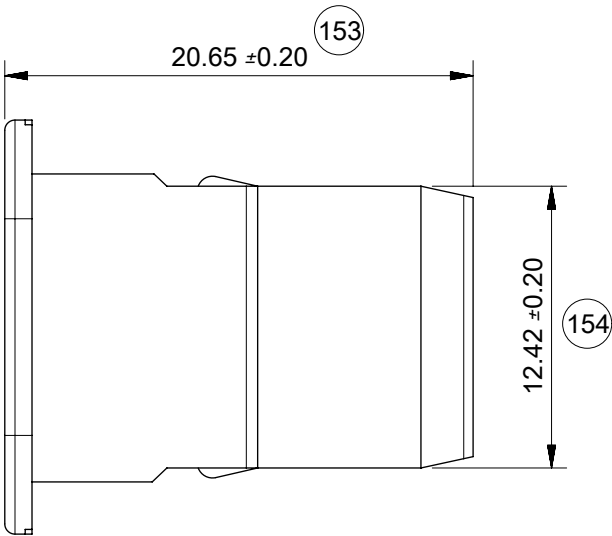
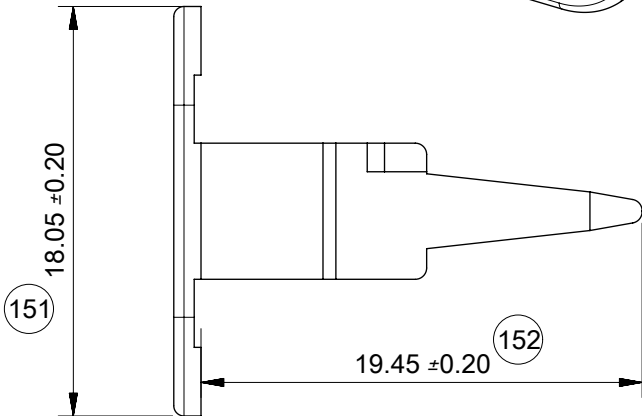
CIRCUIT SIZE  
4 = 6CCT

4

0

--

COLOUR/CODING  
03 = GREEN (NO KEY)



E

D

C

B

A

NOTES  
1. MATERIAL  
HOUSING: NYLON 30%GF  
INSPECTION No's 151-200 RESERVED FOR SHEET 7  
LAST INSPECTION No. 155

RELEASE STATUS	ER	RELEASE DATE	18.11.2016	14:27:41
----------------	----	--------------	------------	----------

QUALITY SYMBOLS		THIS DRAWING CONTAINS INFORMATION THAT IS PROPRIETARY TO MOLEX ELECTRONIC TECHNOLOGIES, LLC AND SHOULD NOT BE USED WITHOUT WRITTEN PERMISSION												
	= 0	SEE LONG TEXT EC NO: 110489 DRWN: JFLETCHER CHK'D: FDUGGAN REV APPR: JDWALLACE	2016/11/16 2016/11/18 2017/01/03	GENERAL TOLERANCES (UNLESS SPECIFIED)  ANGULAR TOL ± 2.0 °		DIMENSION UNITS		SCALE		<div>molex</div>  6CCT ML-XT CV CONNECTOR				
	= 0					MM		3:1						
	= 0					DRWN BY		DATE						
	= 0					JFLETCHER		2015/11/04						
	= 0					CHK'D BY		DATE						
	= 0					FDUGGAN		2015/12/07						
	= 0					APPR BY		DATE		PRODUCT CUSTOMER DRAWING				
	= 0					JDWALLACE		2015/12/08						
	= 0					DRAWING SIZE		THIRD ANGLE PROJECTION						SERIES
	= 0					A2	REV	DRAFT WHERE APPLICABLE MUST REMAIN WITHIN DIMENSIONS		A3			93443	SEE CHART
										DOCUMENT NUMBER 934430040		DOC TYPE PSD	DOC PART 000	SHEET NUMBER 7 OF 7

A