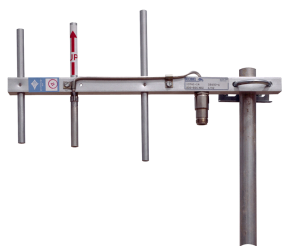


DB493-A



1-port sector (yagi) antenna, 806–866 MHz, 92° HPBW, fixed electrical tilt

- Light duty design
- No field tuning, optimized at factory
- Unique mounts allow vertical or horizontal polarization

Electrical Specifications

Frequency Band, MHz	806–866
Gain, dBi	8.1
Beamwidth, Horizontal, degrees	92
Beamwidth, Vertical, degrees	59.0
Beam Tilt, degrees	0
Front-to-Back Ratio at 180°, dB	20
VSWR Return Loss, dB	1.5 14.0
Input Power per Port, maximum, watts	100
Polarization	Vertical
Impedance	50 ohm

General Specifications

Operating Frequency Band	806 – 866 MHz
Antenna Type	Sector
Band	Single band
Includes	U-bolts
Performance Note	Outdoor usage

Mechanical Specifications

RF Connector Quantity, total	1
RF Connector Quantity, low band	1
RF Connector Interface	N Female
Color	Silver
Grounding Type	RF connector inner conductor and body grounded to reflector and mounting bracket
Radiator Material	Aluminum
RF Connector Location	Bottom
Wind Speed, maximum	241 km/h 150 mph

Dimensions

Length	330.2 mm 13.0 in
Width	190.5 mm 7.5 in
Depth	25.4 mm 1.0 in

DB493-A

Net Weight, without mounting kit 0.3 kg | 0.7 lb

Regulatory Compliance/Certifications

Agency

ISO 9001:2015

Classification

Designed, manufactured and/or distributed under this quality management system



* Footnotes

Performance Note

Severe environmental conditions may degrade optimum performance