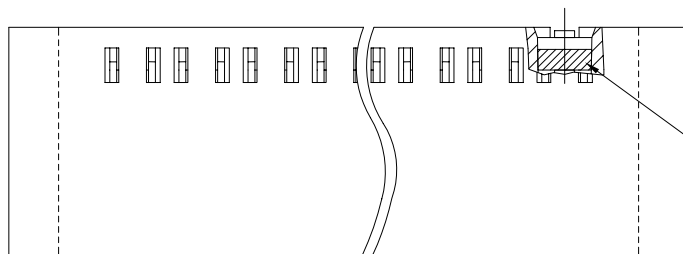
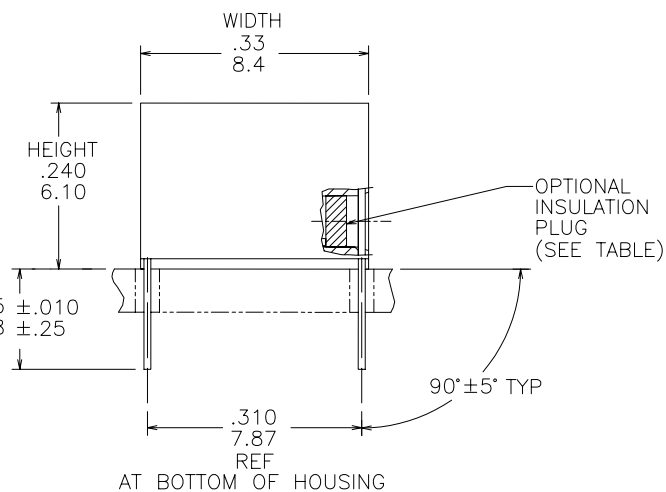
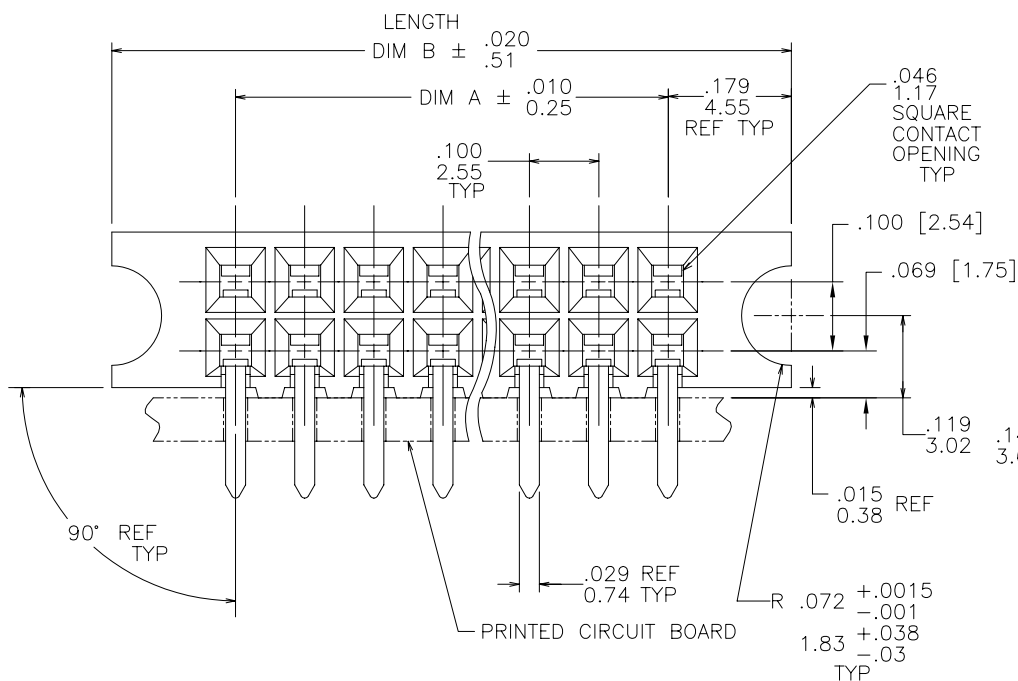


PRODUCT NO.
SEE TABLE

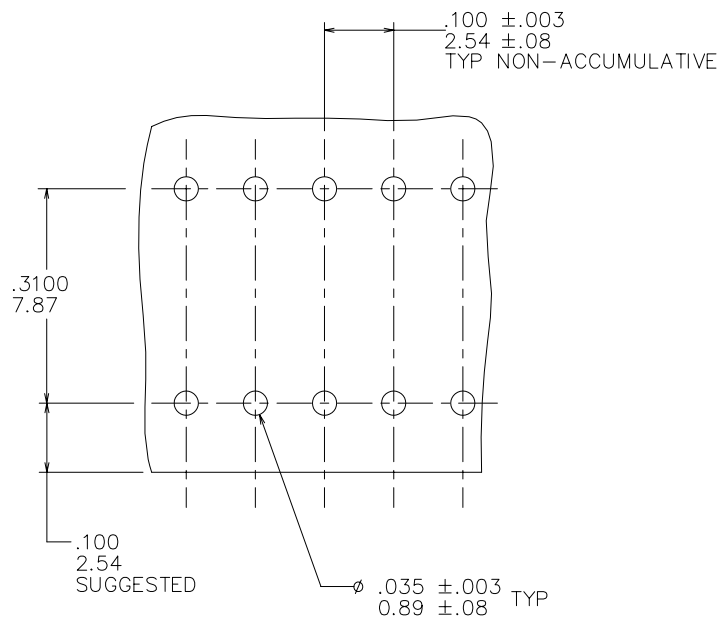


OPTIONAL
INSULATION
PLUG



mat'l. code				surface ISO 1302 <input checked="" type="checkbox"/>	tolerance ISO 406 ISO 1101	projection 	product family CARD CONN.
ltr	ecn no	dr	date	tolerances unless otherwise specified		INCH/MM scale 4:1 	title
C	VW31924	MSC	06/30/94	angles	linear		1 X .100 HORIZ. CARD CONN.
D	V70465	MDF	12/18/97				30μ" Au .145 LEG PIN GUIDE
E	V02386	AZ	10/10/00	0° $\pm 2^\circ$			
F	M07-0137	MHT	2/26/07	dr	M.CLOUSER	06/30/94	dwg no
				enr	H.SUNDY	06/30/94	sheet 1 of 8 size
				chr	H.SUNDY	06/30/94	68733 A3
				appd	H.SUNDY	06/30/94	type Product Customer Drawing
sheet index	revision sheet	F	F	F	F	F	
		1	2	3	4	5	

PRODUCT NO.
SEE TABLE



NOTES:

- ① HOUSING MATERIAL:
FILLED HIGH TEMPERATURE NYLON
COLOR-BLACK.
- ② TERMINAL MATERIAL.
BODY. BRASS .010/.25 THICK.
SPRING. BE-CU. HEAT TREATED
BODY PLATING. GOLD FLASH WITH
30 MICROINCH/0.76 MICRON GOLD
OVER 50 MICROINCH/1.27 MICRON NICKEL
IN CONTACT AREA.
SPRING PLATING. GOLD FLASH
3. MARKING: "FCI" PART NUMBER, AND DATE CODE.
LEGIBLE ON TUBE LABEL.
4. APPLICATION INFORMATION.
A. RECOMMENDED MOUNTING HOLE PATTERN IS SHOWN IN FIGURE "1".
B. ALL MATING PINS TO BE .025/.64 SQUARE ON TRUE CENTER
OF GIVEN TERMINAL SPACINGS WITHIN .015/.38 DIA.
C. SUGGESTED MATING PIN LENGTH .350±.020/8.89±.51.
- ⑤ ADD "LF" AT THE END OF PART NUMBER
FOR LEAD FREE OPTION.
6. THESE PRODUCT MEETS EUROPEAN UNION DIRECTIVES AND OTHER
COUNTRY REGULATIONS AS DESCRIBED IN GS-22-008
7. THIS PART WILL WITHSTAND EXPOSURE TO 260°C PEAK TEMPERATURE
FOR 20 SECONDS IN A WAVE SOLDER, INFRA-RED OR VAPOR PHASE
SOLDER PROCESS.

mat'l. code				surface ISO 1302 ✓	tolerance ISO 406 ISO 1101	projection INCH/MM	product family CARD CONN.
ltr	ecn	no	dr	date	tolerances unless otherwise specified	scale 4:1 FCI	title
F					angles linear .XX±.01/.3		1 X .100 HORIZ. CARD CONN.
					0°±2' .XXX±.005/.13		30μ" Au .145 LEG PIN GUIDE
					.XXXX±.0020/.051		dwg no sheet2 of 8 size
			dr	M.CLOUSER	06/30/94	FCI	68733 A3
			enr	H.SUNDY	06/30/94		
			chr	H.SUNDY	06/30/94		
			appd	H.SUNDY	06/30/94		
sheet	revision						type Product Customer Drawing
index	sheet						



FCIconnect.com

Copyright FCI

D

1				2		3								4	5		6	
PRODUCT NO.	NO. OF POS.	DIM A	DIM B	INSUL. PLUG	LEAD FREE OPTION													
68733-026	2 X 26	2.500/63.50	2.858/72.59	NO	NOTES 5,6													
↑	-027	2 X 27	2.600/66.04	2.958/75.13	↑													
	-028	2 X 28	2.700/68.58	3.058/77.67														
	-029	2 X 29	2.800/71.12	3.158/80.21														
	-030	2 X 30	2.900/73.66	3.258/82.75														
	-031	2 X 31	3.000/76.20	3.358/85.29														
	-032	2 X 32	3.100/78.74	3.458/87.83														
	-033	2 X 33	3.200/81.28	3.558/90.37														
	-034	2 X 34	3.300/83.82	3.658/92.91														
	-035	2 X 35	3.400/86.36	3.758/95.45														
	-036	2 X 36	3.500/88.90	3.858/97.99														
	-037	2 X 37	3.600/91.44	3.958/100.53														
	-038	2 X 38	3.700/93.98	4.058/103.07														
	-039	2 X 39	3.800/96.52	4.158/105.61														
	-040	2 X 40	3.900/99.06	4.258/108.15														
	-041	2 X 41	4.000/101.60	4.358/110.69														
	-042	2 X 42	4.100/104.14	4.458/113.23														
	-043	2 X 43	4.200/106.68	4.558/115.77														
	-044	2 X 44	4.300/109.22	4.658/118.31														
	-045	2 X 45	4.400/111.76	4.758/120.85														
	-046	2 X 46	4.500/114.30	4.858/123.39														
	-047	2 X 47	4.600/116.84	4.958/125.93														
	-048	2 X 48	4.700/119.38	5.058/128.47														
	-049	2 X 49	4.800/121.92	5.158/131.01														
↓	68733-050	2 X 50	4.900/124.46	5.258/133.55	NO	NOTES 5,6												

mat'l. code				surface <input checked="" type="checkbox"/> ISO 1302 <input checked="" type="checkbox"/> ISO 406 <input checked="" type="checkbox"/> ISO 1101		tolerance		projection		product family							
litr				ecnr		no		dr		date		CARD CONN.					
F								tolerances unless otherwise specified				title					
								angles				linear		1 X .100 HORIZ. CARD CONN.			
														30μ" Au .145 LEG PIN GUIDE			
								0°±2°						scale 4:1			
								dr		M.CLOUSER		06/30/94		dwg no			
								enrg		H.SUNDY		06/30/94		sheet4 of 8 size			
								chr		H.SUNDY		06/30/94		A3			
								appd		H.SUNDY		06/30/94		type Product Customer Drawing			
sheet index		revision sheet															

1				2		3		4		5		6	
form: A3													

mat'l. code				surface ISO 1302	tolerance ISO 406 ISO 1101	projection 	product family CARD CONN.
ltr	ecn no	dr	date	tolerances unless otherwise specified		INCH/MM scale 4:1	title
F				angles	linear		1 X .100 HORIZ. CARD CONN.
				0°±2'	.xxx±.005/.13 .xxxx±.0020/.051		30μ" Au .145 LEG PIN GUIDE
				dr	M.CLOUSER	06/30/94	dwg no
				enr	H.SUNDY	06/30/94	sheet 4 of 8 size
				chr	H.SUNDY	06/30/94	68733 A3
				appd	H.SUNDY	06/30/94	type Product Customer Drawing
sheet index	revision sheet						

form: A3





FCIconnect.com

Copyright FCI

form: A3

PRODUCT NO.	NO. OF POS.	DIM A	DIM B	INSUL. PLUG	LEAD FREE OPTION
68733-051	2 X 51	5.000/127.00	5.358/136.09	NO	NOTES 5,6
-052	2 X 52	5.100/129.54	5.458/138.63		
-053	2 X 53	5.200/132.08	5.558/141.17		
-054	2 X 54	5.300/134.62	5.658/143.71		
-055	2 X 55	5.400/137.16	5.758/146.25		
-056	2 X 56	5.500/139.70	5.858/148.79		
-057	2 X 57	5.600/142.24	5.958/151.33		
-058	2 X 58	5.700/144.78	6.058/153.87		
-059	2 X 59	5.800/147.32	6.158/156.41		
-060	2 X 60	5.900/149.86	6.258/158.95		
-061	2 X 61	6.000/152.40	6.358/161.49		
-062	2 X 62	6.100/154.94	6.458/164.03		
-063	2 X 63	6.200/157.48	6.558/166.57		
-064	2 X 64	6.300/160.02	6.658/169.11		
68733-065	2 X 65	6.400/162.56	6.758/171.65	NO	NOTES 5,6
-066 THRU					OBSOLETE
-100					

mat'l. code				surface <input checked="" type="checkbox"/> ISO 1302		tolerance <input checked="" type="checkbox"/> ISO 406 <input checked="" type="checkbox"/> ISO 1101		projection 		product family CARD CONN.				
ltr	ecn	no	dr	date	tolerances unless otherwise specified				INCH/MM		title 1 X .100 HORIZ. CARD CONN. 30μ" Au .145 LEG PIN GUIDE			
F					angles	linear	.XX±.01/.3 .xxx±.005/.13 0'±2' .xxx±.0020/.051	scale 4:1						
					dr	M.CLOUSER	06/30/94			dwg no		sheet5 of 8		size
					enr	H.SUNDY	06/30/94			68733		A3		
					chr	H.SUNDY	06/30/94							
					appd	H.SUNDY	06/30/94			type Product Customer Drawing				
sheet index		revision sheet												





FCIconnect.com

Copyright FCI

D

1				2		3								4		5		6	
PRODUCT NO.	NO. OF POS.	DIM A	DIM B	INSUL. PLUG	LEAD FREE OPTION														
68733-526	2 X 26	2.500/63.50	2.858/72.59	YES	NOTES 5,6														
↑	-527	2 X 27	2.600/66.04	2.958/75.13	↑														
	-528	2 X 28	2.700/68.58	3.058/77.67															
	-529	2 X 29	2.800/71.12	3.158/80.21															
	-530	2 X 30	2.900/73.66	3.258/82.75															
	-531	2 X 31	3.000/76.20	3.358/85.29															
	-532	2 X 32	3.100/78.74	3.458/87.83															
	-533	2 X 33	3.200/81.28	3.558/90.37															
	-534	2 X 34	3.300/83.82	3.658/92.91															
	-535	2 X 35	3.400/86.36	3.758/95.45															
	-536	2 X 36	3.500/88.90	3.858/97.99															
	-537	2 X 37	3.600/91.44	3.958/100.53															
	-538	2 X 38	3.700/93.98	4.058/103.07															
	-539	2 X 39	3.800/96.52	4.158/105.61															
	-540	2 X 40	3.900/99.06	4.258/108.15															
	-541	2 X 41	4.000/101.60	4.358/110.69															
	-542	2 X 42	4.100/104.14	4.458/113.23															
	-543	2 X 43	4.200/106.68	4.558/115.77															
	-544	2 X 44	4.300/109.22	4.658/118.31															
	-545	2 X 45	4.400/111.76	4.758/120.85															
	-546	2 X 46	4.500/114.30	4.858/123.39															
	-547	2 X 47	4.600/116.84	4.958/125.93															
	-548	2 X 48	4.700/119.38	5.058/128.47															
↓	-549	2 X 49	4.800/121.92	5.158/131.01	↓														
68733-550	2 X 50	4.900/124.46	5.258/133.55	YES	NOTES 5,6														

mat'l. code				surface ISO 1302 ✓		tolerance ISO 406 ISO 1101		projection 		product family CARD CONN.					
ltr ecr no dr date				tolerances unless otherwise specified						title					
F				angles		linear		INCH/MM ↔		1 X .100 HORIZ. CARD CONN.					
						.XX±.01/.3				30μ" Au .145 LEG PIN GUIDE					
						.XXX±.005/.13									
				0°±2'		.XXXX±.0020/.051		scale 4:1							
				dr		M.CLOUSER		06/30/94		dwg no		sheet7 of 8		size	
				engr		H.SUNDY		06/30/94				68733		A3	
				chr		H.SUNDY		06/30/94							
				appd		H.SUNDY		06/30/94							
sheet index		revision sheet								type Product Customer Drawing					

form: A3



FCIconnect.com

Copyright FCI

form: A3

PRODUCT NO.	NO. OF POS.	DIM A	DIM B	INSUL. PLUG	LEAD FREE OPTION
68733-551	2 X 51	5.000/127.00	5.358/136.09	YES	NOTES 5,6
-552	2 X 52	5.100/129.54	5.458/138.63		
-553	2 X 53	5.200/132.08	5.558/141.17		
-554	2 X 54	5.300/134.62	5.658/143.71		
-555	2 X 55	5.400/137.16	5.758/146.25		
-556	2 X 56	5.500/139.70	5.858/148.79		
-557	2 X 57	5.600/142.24	5.958/151.33		
-558	2 X 58	5.700/144.78	6.058/153.87		
-559	2 X 59	5.800/147.32	6.158/156.41		
-560	2 X 60	5.900/149.86	6.258/158.95		
-561	2 X 61	6.000/152.40	6.358/161.49		
-562	2 X 62	6.100/154.94	6.458/164.03		
-563	2 X 63	6.200/157.48	6.558/166.57		
-564	2 X 64	6.300/160.02	6.658/169.11		
68733-565	2 X 65	6.400/162.56	6.758/171.65	YES	NOTES 5,6
-566 THRU					
-600					

OBSOLETE

mat'l. code				surface ISO 1302	tolerance ISO 406 ISO 1101	projection 	product family CARD CONN.
ltr	ecn	no	dr	date	tolerances unless otherwise specified	INCH/MM scale 4:1 	title
F					angles linear .XX±.01/.3		1 X .100 HORIZ. CARD CONN.
					0'±2' .xxx±.005/.13 .xxx±.0020/.051		30μ" Au .145 LEG PIN GUIDE
				dr	M.CLOUSER	06/30/94	dwg no
				enr	H.SUNDY	06/30/94	sheet 8 of 8 size
				chr	H.SUNDY	06/30/94	68733 A3
				appd	H.SUNDY	06/30/94	type Product Customer Drawing
sheet index	revision sheet						