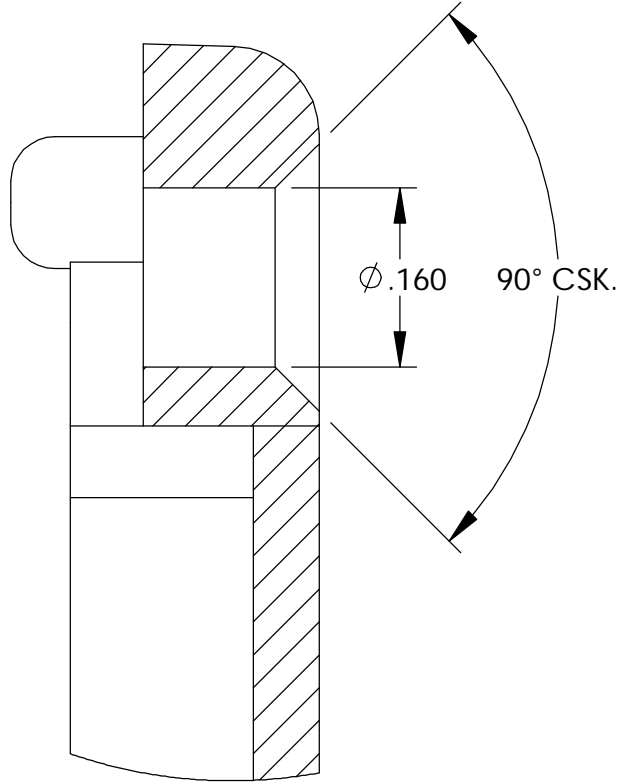
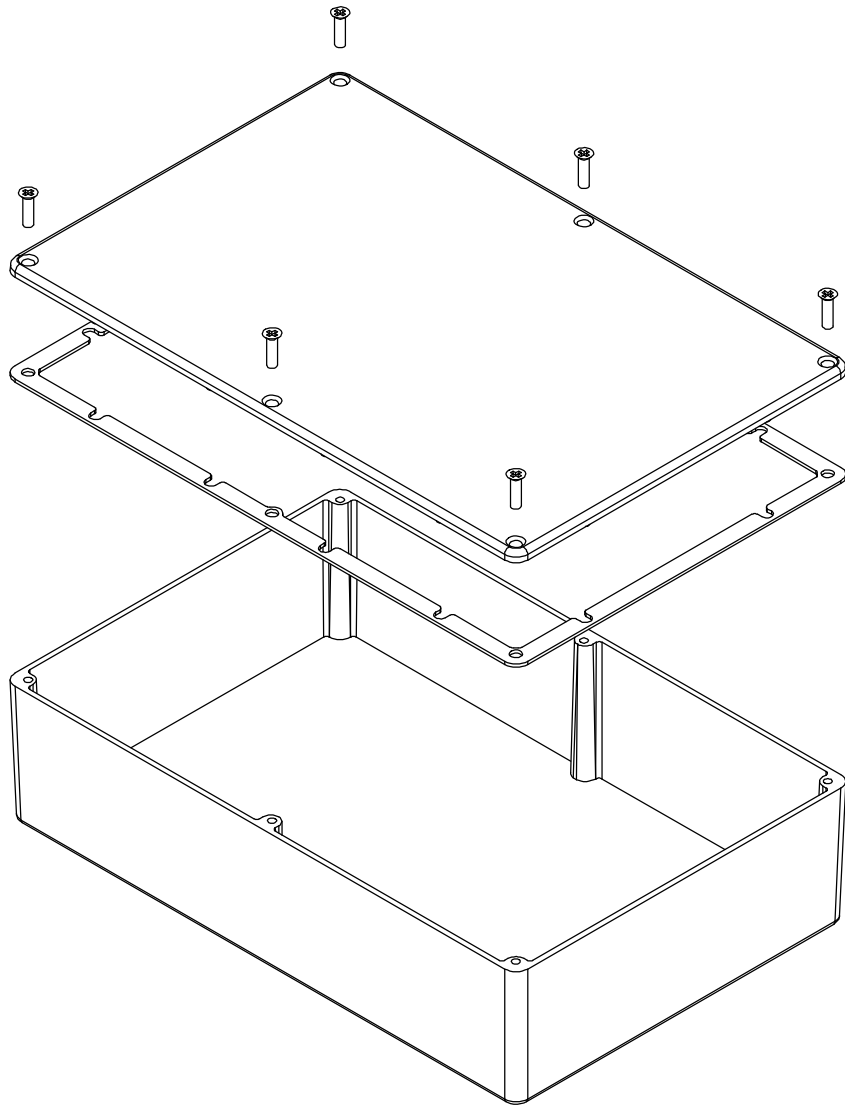


THE INFORMATION CONTAINED IN THIS DRAWING IS THE SOLE PROPERTY OF
BUD INDUSTRIES INC. ANY REPRODUCTION IN PART OR WHOLE WITHOUT
THE WRITTEN PERMISSION OF BUD INDUSTRIES INC. IS PROHIBITED.

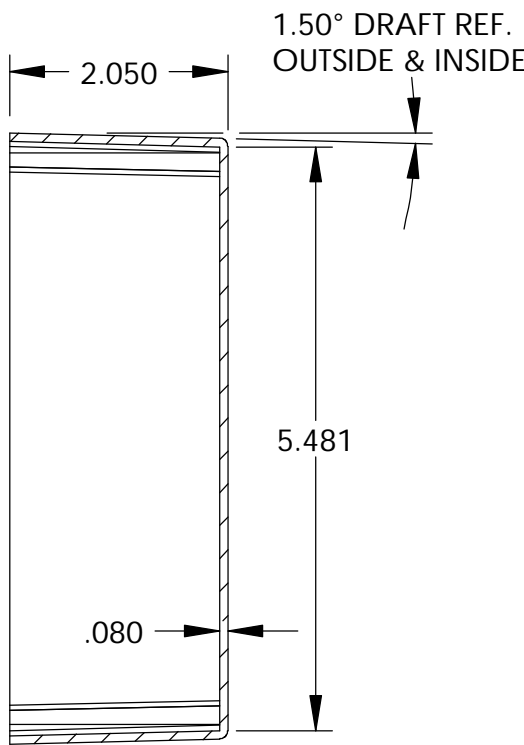
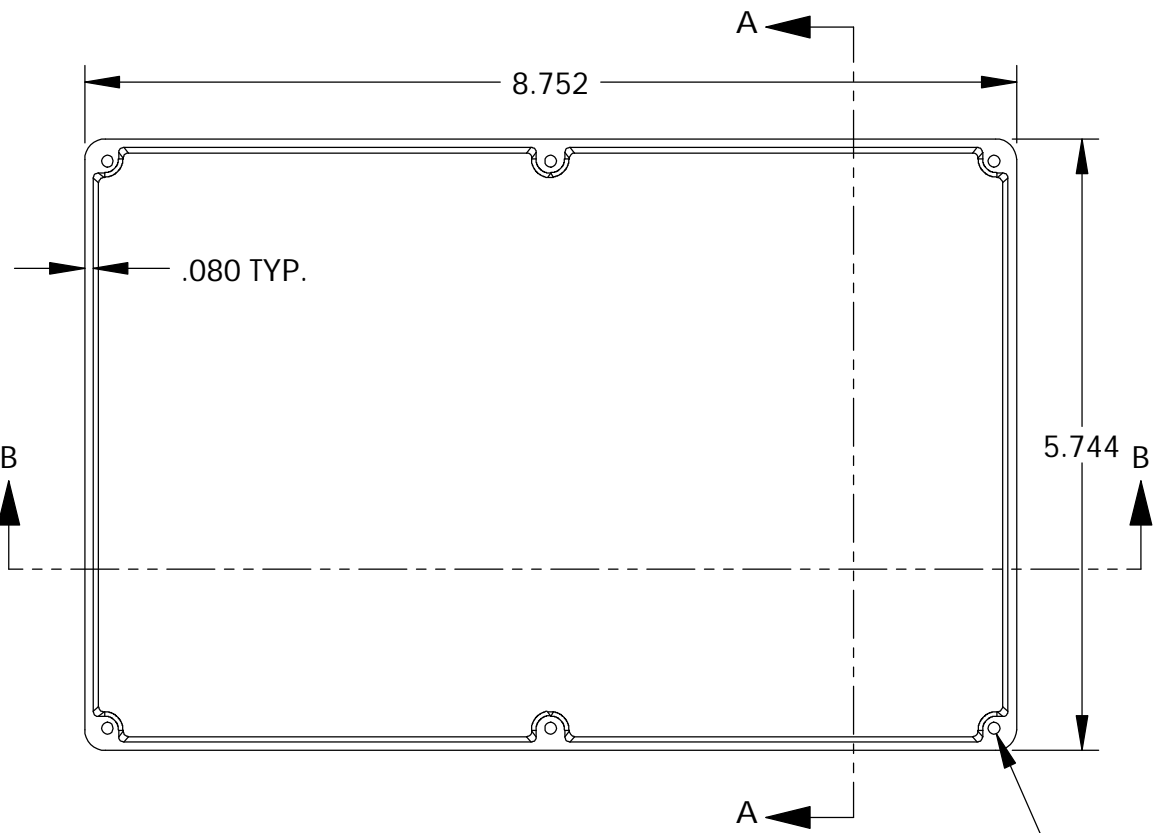
DWG. NO.	CN-5711
ISSUE	REVISIONS

MATERIAL - ALUMINUM ALLOY #ADC-12
FINISH - NATURAL (CONTACT BUD FACTORY FOR
ALTERNATE FINISHES)
GASKET - RATED IP65 NEOPRENE, SELF-ADHESIVE,
3mm THICK, COLOR BLACK
SCREWS - STAINLESS STEEL, M3.5 x 12mm LG.,
CSK. HEAD, SELF-THREADING

ALL HOLE DIAMETERS HAVE $\pm .005$ TOLERANCE.
ALL OTHER DIMENSIONS HAVE $\pm .015$ TOLERANCE.
ENCLOSURES ARE SHIPPED UNASSEMBLED WITH
ALL ITEMS SHOWN.



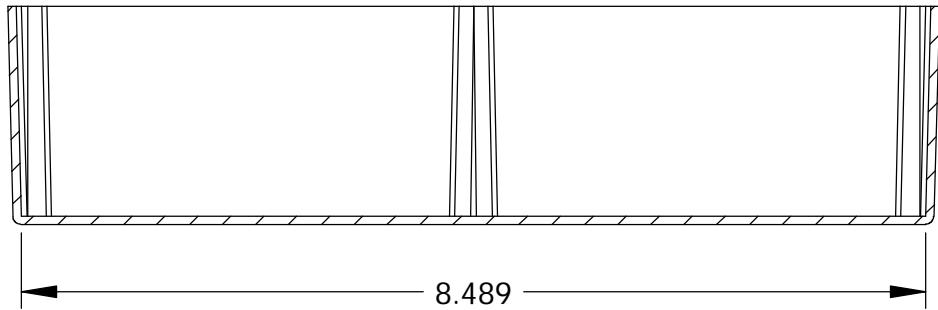
DETAIL D
SCALE 6 : 1



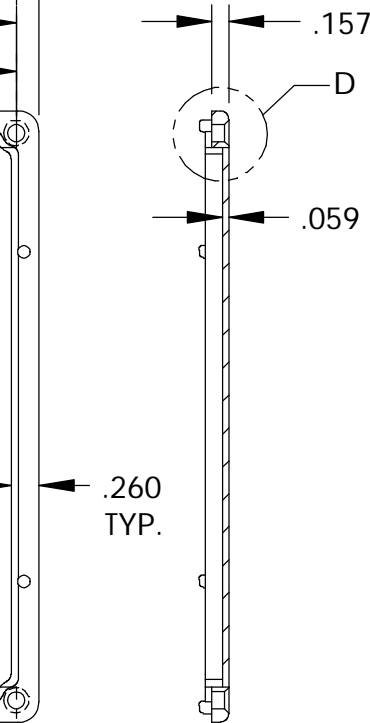
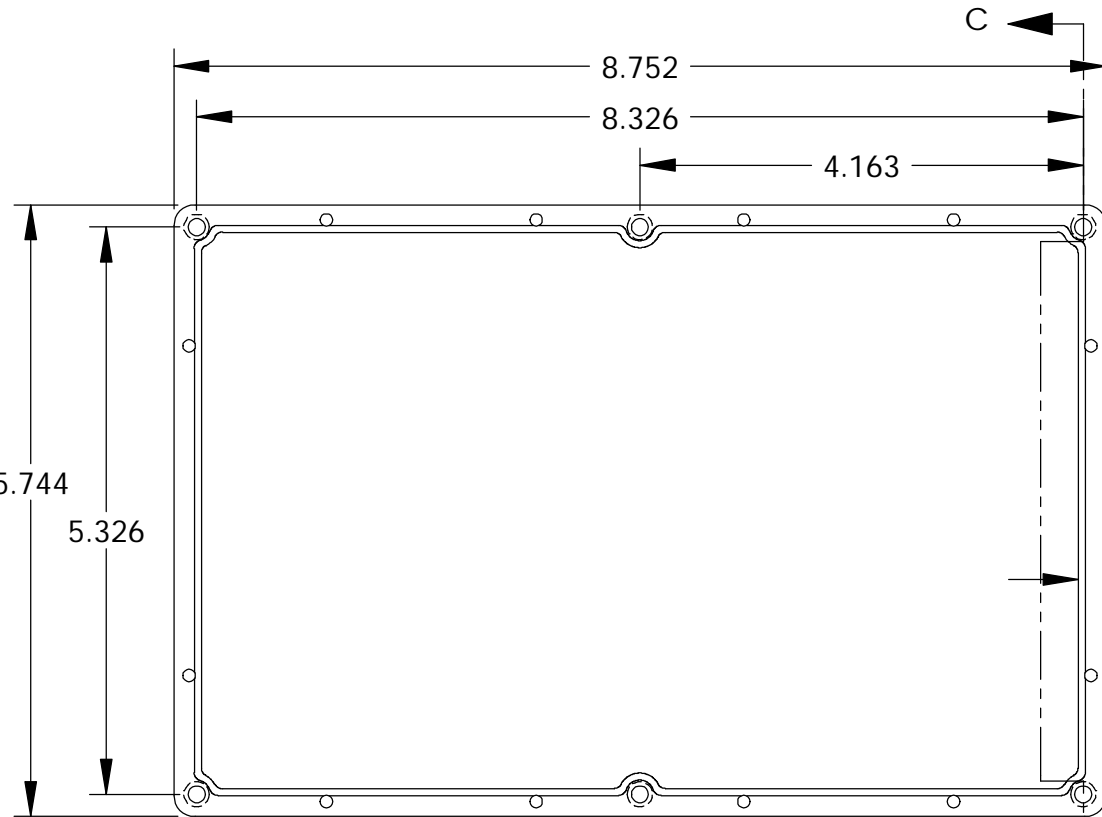
SECTION A-A

TAPPED M3.5 (6x)

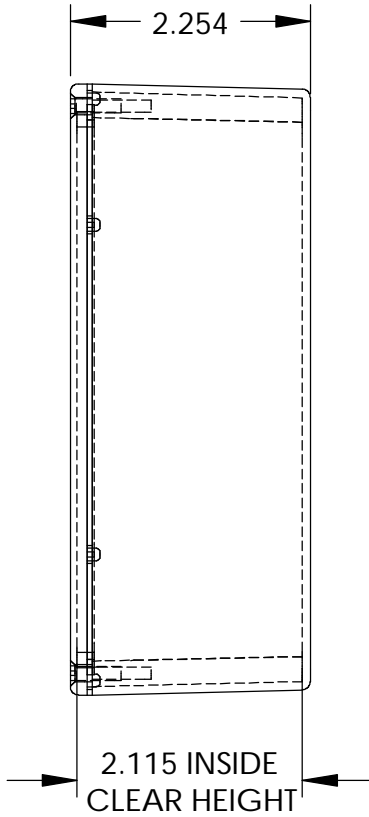
BODY



SECTION B-B



SECTION C-C



COVER

PARTS LIST

+/- .005 BETWEEN HOLE CENTERS +/- .015 FROM SHEARED EDGE +/- .032 FROM A BENT SURFACE +/- .062 BETWEEN ASSEMBLED SURFACES UNLESS OTHERWISE SPECIFIED		CAD GENERATED DRAWING. DO NOT MANUALLY UPDATE	
APPROVALS		DATE	
DRAWN		3-31-06	
MATERIAL		CHECKED	
FINISH		APPROVED	

AS NOTED

AS NOTED

BUD INDUSTRIES INC.

DIE CAST ALUMINUM
ENCLOSURE

QTY.	USED ON	DO NOT SCALE DRAWING	SCALE	DWG. NO.	REV.
				CN-5711	
				CAD FILE:	SHEET 1 OF 1

Mouser Electronics

Authorized Distributor

Click to View Pricing, Inventory, Delivery & Lifecycle Information:

[Bud Industries:](#)

[CN-5711](#)