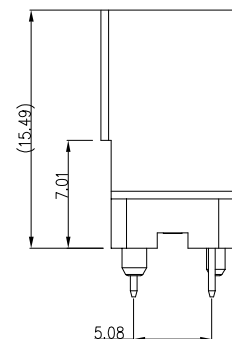
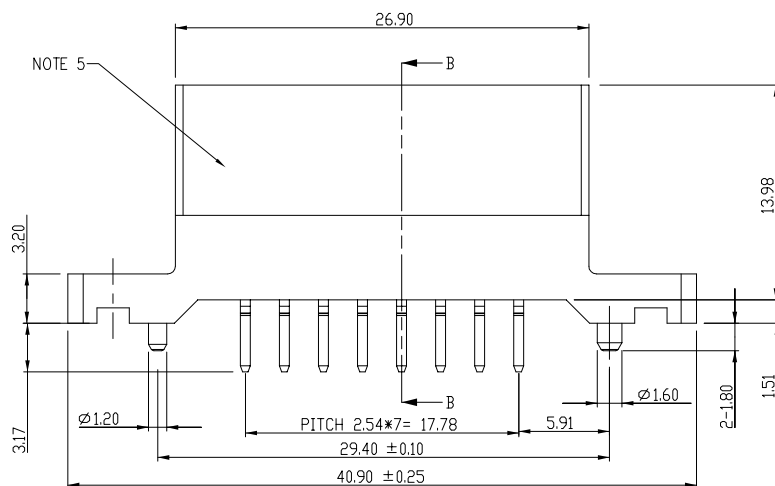
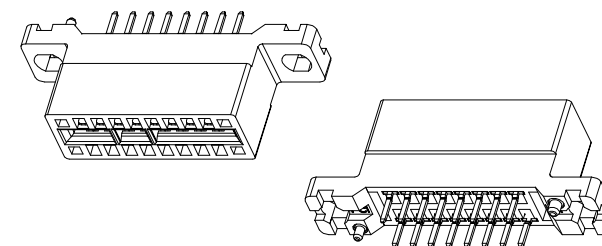
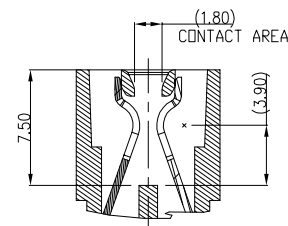
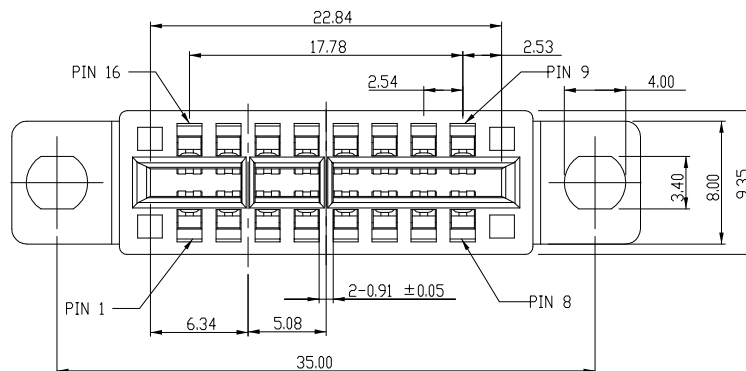


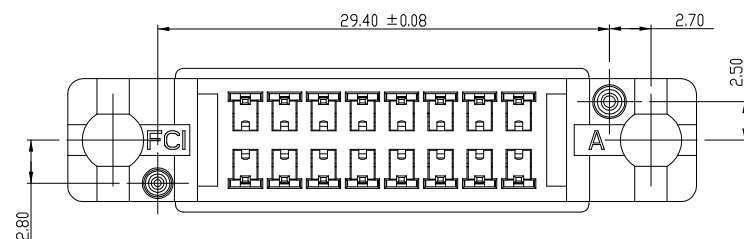
PRODUCT NO
10046972-001LF

REV	ECR NUMBER	REV'D BY	DATE
E	DG06-0306	RYAN YUAN	08/18/06
F	DG06-0524	JULIA WANG	12/26/06
C	DG05-0287	Steven Wang	08/18/05
D	DG05-0461	JM Guo	11/14/05



NOTE:

- MATERIAL:
HOUSING: HIGH TEMPERATURE THERMOPLASTIC,
UL 94 V-0 FLAME RETARDANT.
TERMINAL: HIGH CONDUCTIVITY COPPER ALLOY.
PLATING SPEC AS BELOW:
Ni 50u" UNDER PLATED.
Au 30u" OVER CONTACT AREA, (ONE SIDE)
MATTE TIN 120u" OVER SOLDERING AREA.
- PACKING SPEC. GS-14-937.
- PRODUCT SPEC. GS-12-338.
- PART NUMBER 10046972-001LF MEETS EUROPEAN
UNION DIRECTIVE AND OTHER COUNTRY
REGULATIONS AS DESCRIBED IN GS-22-008.
THE HOUSING WILL WITHSTAND EXPOSURE TO 260°C
PEAK TEMPERATURE FOR 10 SECONDS IN A WAVE
SOLDER APPLICATION WITH A CIRCUIT BOARD.
- MANUFACTURER'S NAME, P/N AND DATE CODE TO APPEAR
ON THIS SURFACE AS PER GS-24-007.



CUSTOMER COPY			THIRD ANGLE PROJECTION			FCI				
DO NOT SCALE DRAWING			DIMENSIONAL LIMITS APPLY AFTER PLATING (IF SPECIFIED)			DESCRIPTION				
GENERAL TOLERANCE			NAME			VERTICAL TYPE, WITH MOUNTING EARS (8PX2) POWER EDGE CONNECTOR				
MILLIMETER	INCH	ANGLE	DRAWN	Benny Chen	DATE	SCALE	SIZE	DRAWING NO.	REV	SHEET
X.X ±0.8	.XX ±0.03	±3°	CHECKED	Paul Wang	04/02/05	1:1	A4	10046972	F	1 OF 4
X.XX ±0.25	.XXX ±0.010		APPROVED	Joseph Hsia	04/07/05					
X.XXX ±0.13	.XXX ±0.005									

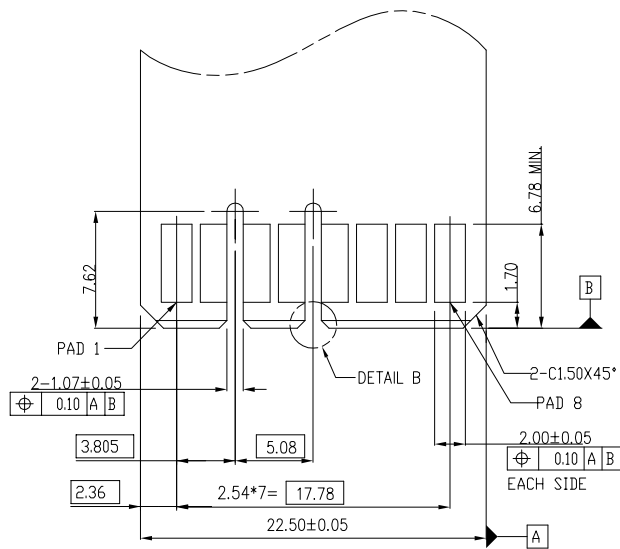
ALL RIGHT RESERVED. REPRODUCTION OR ISSUE TO THIRD PARTIES IN ANY FORM WHATEVER IS NOT PERMITTED WITHOUT WRITTEN AUTHORITY FROM THE PROPRIETOR. PROPERTY OF F C I. COPYRIGHT F C I.

PDM: Rev:F

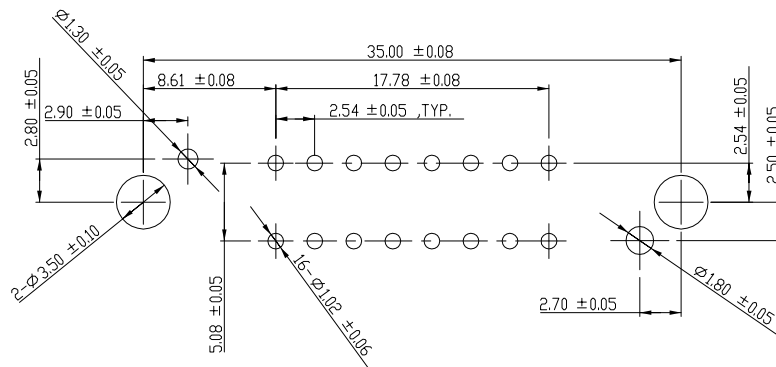
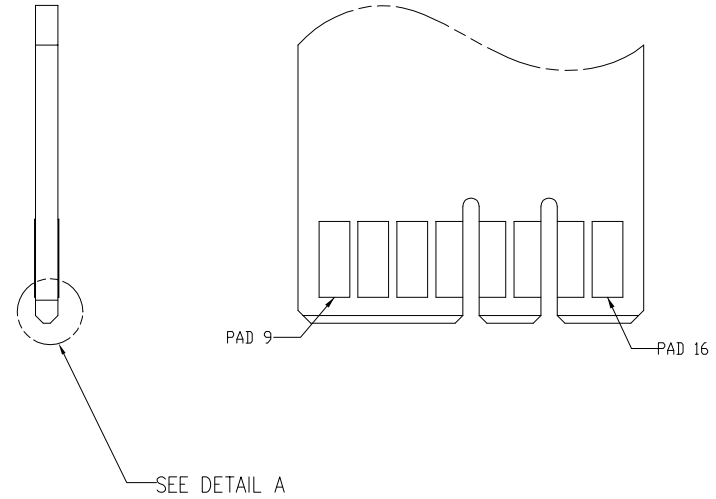
STATUS:Released

Printed: Dec 03, 2010

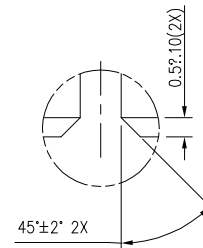
PRODUCT NO
10046972-001LF



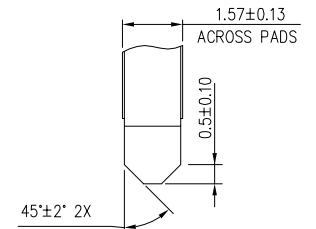
RECOMMENDED MATING BOARD



RECOMMENDED PC BOARD LAYOUT
AND THE THICKNESS IS 2.36 mm



DETAIL B
SCALE 5:1



DETAIL A
SCALE 5:1

CUSTOMER
COPY



THIRD ANGLE PROJECTION

DIMENSIONAL LIMITS APPLY AFTER
PLATING (IF SPECIFIED)

DO NOT SCALE DRAWING	NAME	DATE
GENERAL TOLERANCE	Benny Chen	02/04/05
MILLIMETER	Paul Wang	04/02/05
INCH	Joseph Hsia	04/07/05
ANGLE		

DESCRIPTION

RECOMMENDED LAYOUT OF MATING AND PCB BOARD
VERTICAL TYPE WITH MOUNTING EARS (8PX2)

SCALE	SIZE	DRAWING NO.	REV	SHEET
~	A4	10046972	F	2 OF

ALL RIGHT RESERVED. REPRODUCTION OR ISSUE TO THIRD PARTIES IN ANY FORM WHATEVER IS NOT PERMITTED WITHOUT
WRITTEN AUTHORITY FROM THE PROPRIETOR. PROPERTY OF F C I. COPYRIGHT F C I.

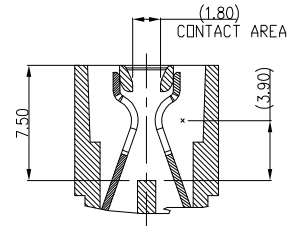
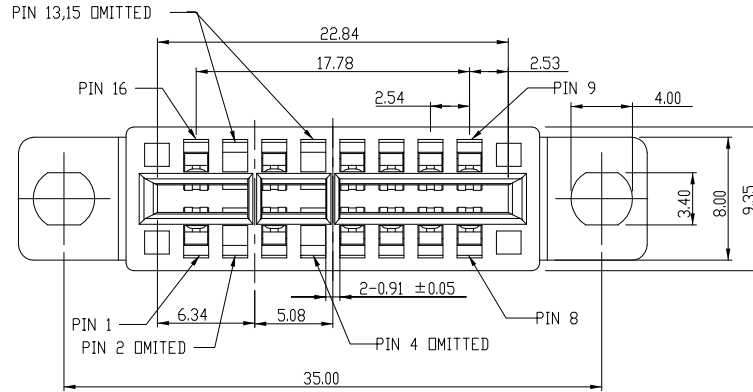
X.X ±0.8	.XX ±0.03	±3°
X.XX ±0.25	.XXX ±0.010	
X.XXX±0.13	.XXXX±0.005	

PDM: Rev:F

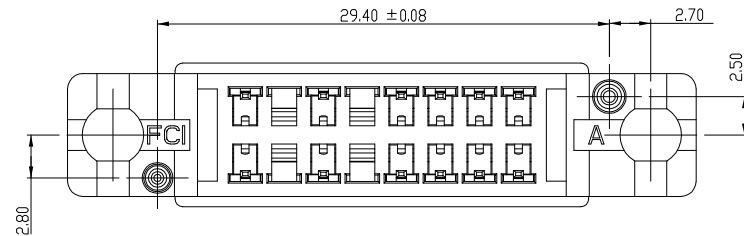
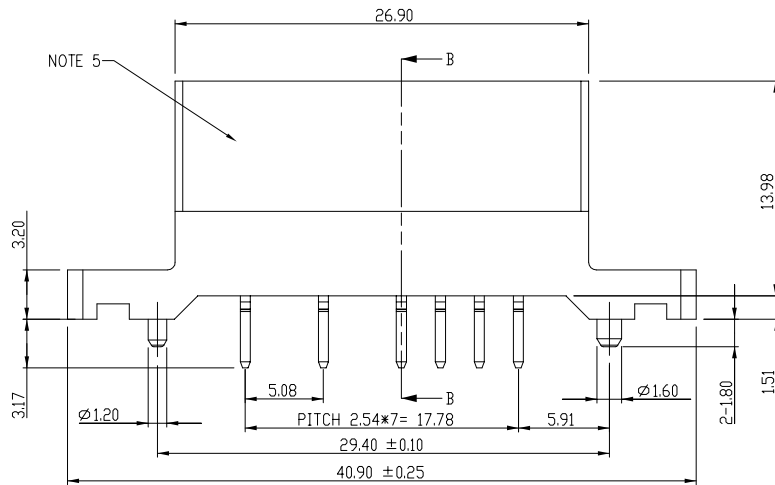
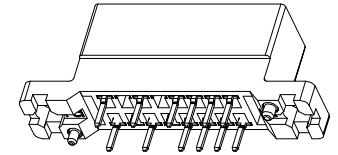
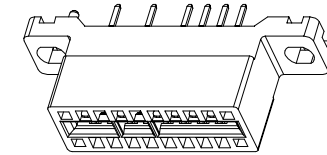
STATUS:Released

Printed: Dec 03, 2010

PRODUCT NO
10046972-002LF



SECTION B-B



NOTE:

- MATERIAL:
HOUSING: HIGH TEMPERATURE THERMOPLASTIC,
UL 94 V-0 FLAME RETARDANT.
TERMINAL: HIGH CONDUCTIVITY COPPER ALLOY.
PLATING SPEC AS BELOW:
Ni 50u" UNDER PLATED.
Au 30u" OVER CONTACT AREA. (ONE SIDE)
MATTE TIN 120u" OVER SOLDERING AREA.
- PACKING SPEC. GS-14-937.
- PRODUCT SPEC. GS-12-338.
- PART NUMBER 10046972-002LF MEETS EUROPEAN
UNION DIRECTIVE AND OTHER COUNTRY
REGULATIONS AS DESCRIBED IN GS-22-008.
THE HOUSING WILL WITHSTAND EXPOSURE TO 260°C
PEAK TEMPERATURE FOR 10 SECONDS IN A WAVE
SOLDER APPLICATION WITH A CIRCUIT BOARD.
- MANUFACTURER'S NAME, P/N AND DATE CODE TO APPEAR
ON THIS SURFACE AS PER GS-24-007.

CUSTOMER
COPY



THIRD ANGLE PROJECTION

DIMENSIONAL LIMITS APPLY AFTER
PLATING (IF SPECIFIED)

DO NOT SCALE DRAWING

GENERAL TOLERANCE

MILLIMETER INCH ANGLE

X.X ±0.8 .XX ±0.03 ±3°

X.XX ±0.25 .XXX ±0.010

X.XXX ±0.13 .XXX ±0.005

DRAWN Benny Chen 04/28/05

CHECKED Paul Wang 05/23/05

APPROVED Joseph Hsia 05/23/05



DESCRIPTION

VERTICAL TYPE, WITH MOUNTING EARS
(8PX2) POWER EDGE CONNECTOR

SCALE 1:1 SIZE A4 DRAWING NO. 10046972 REV F SHEET 3 OF 3

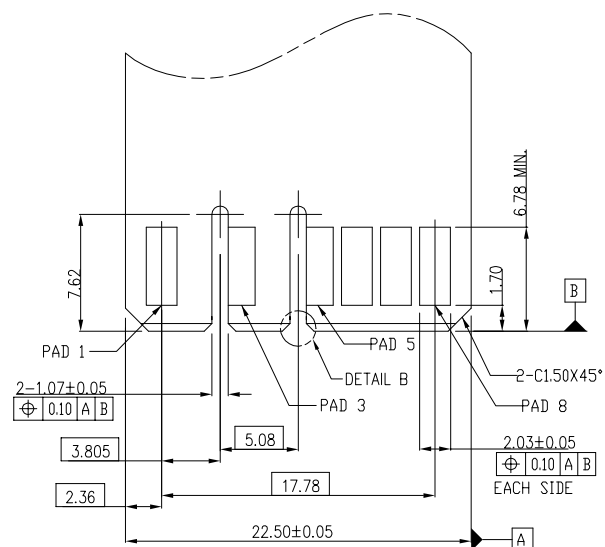
ALL RIGHT RESERVED. REPRODUCTION OR ISSUE TO THIRD PARTIES IN ANY FORM WHATEVER IS NOT PERMITTED WITHOUT
WRITTEN AUTHORITY FROM THE PROPRIETOR. PROPERTY OF F C I. COPYRIGHT F C I.

PDM: Rev:F

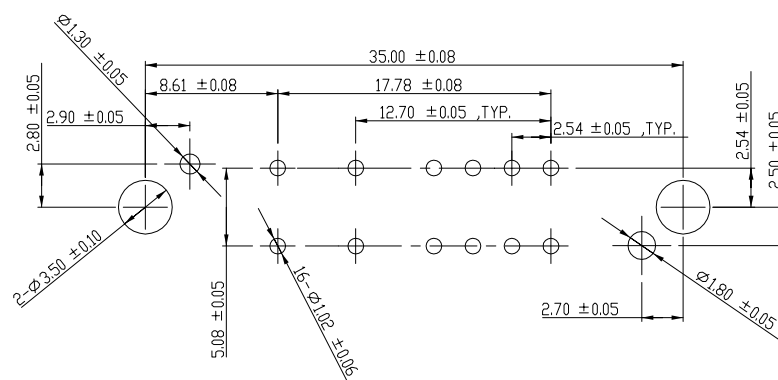
STATUS:Released

Printed: Dec 03, 2010

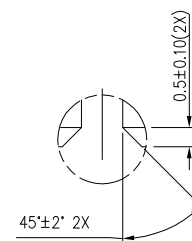
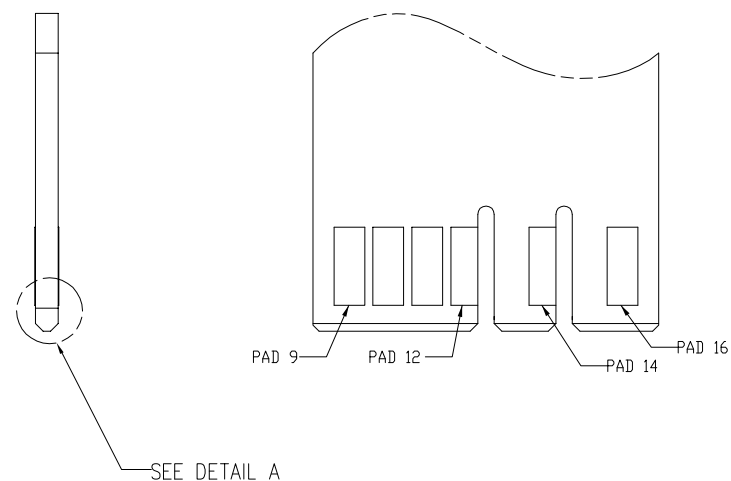
PRODUCT NO
10046972-002LF



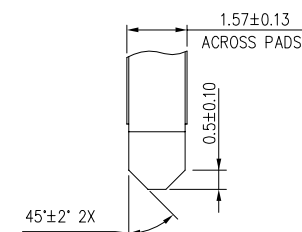
RECOMMENDED MATING BOARD



RECOMMENDED PC BOARD LAYOUT
AND THE THICKNESS IS 2.36 mm




DETAIL B
SCALE 5:1



DETAIL A
SCALE 5:1

CUSTOMER
COPY



THIRD ANGLE PROJECTION

DIMENSIONAL LIMITS APPLY AFTER
PLATING (IF SPECIFIED)

	NAME	DATE
DRAWN	Benny Chen	02/04/05
CHECKED	Paul Wang	05/23/05
APPROVED	Joseph Hsia	05/23/05

DESCRIPTION

RECOMMENDED LAYOUT OF MATING AND PCB BOARD
VERTICAL TYPE WITH MOUNTING EARS (8PX2)

SCALE	SIZE	DRAWING NO.	REV	SHEET
~	A4	10046972	F	4 OF 4

ALL RIGHT RESERVED. REPRODUCTION OR ISSUE TO THIRD PARTIES IN ANY FORM WHATEVER IS NOT PERMITTED WITHOUT WRITTEN AUTHORITY FROM THE PROPRIETOR. PROPERTY OF F C I. COPYRIGHT F C I.

PDM: Rev:F

STATUS: **Released**

¹ Printed: Dec 03, 2010