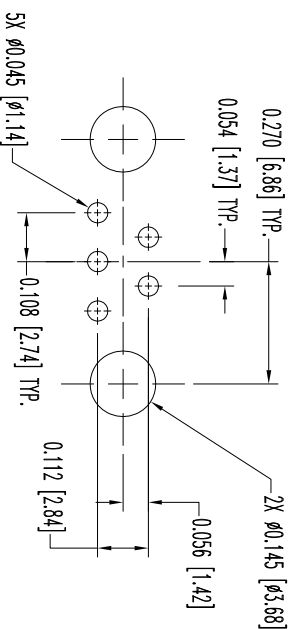
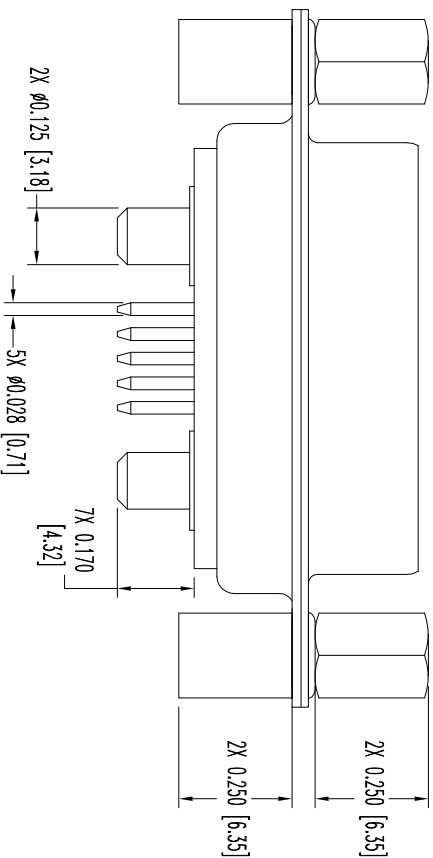
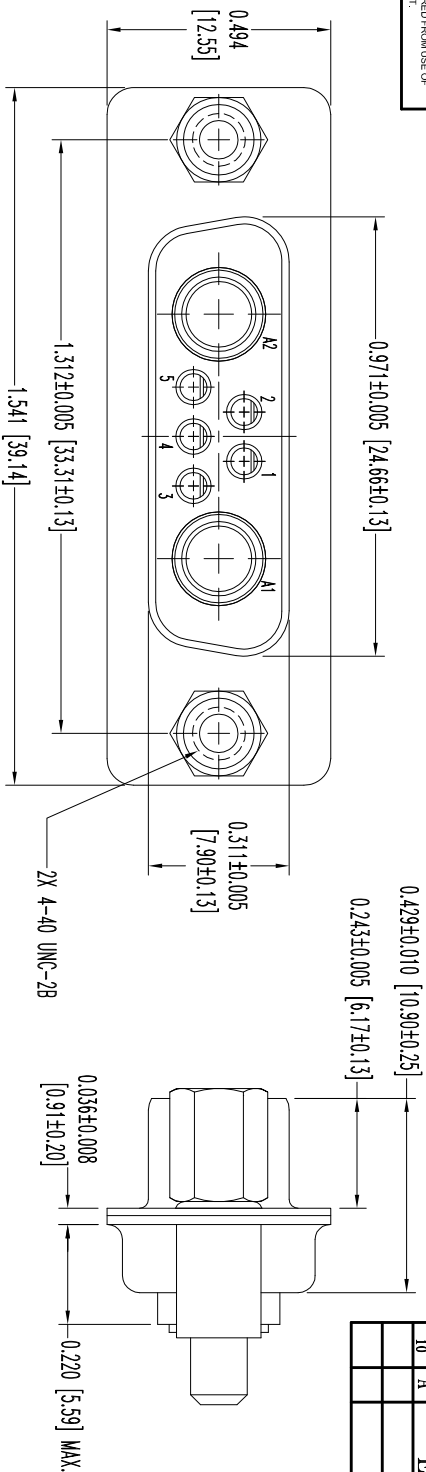


THIS DRAWING CONTAINS INFORMATION PROPRIETARY TO POSITRONIC INDUSTRIES INC. THE DATA ON THIS DRAWING IS TO BE USED FOR TECHNICAL INFORMATION IS GIVEN FREE OF CHARGE. THE USER EMPLOYER SUCH INFORMATION AT HIS OWN DISCRETION. POSITRONIC INDUSTRIES INC. MAKES NO WARRANTY, RESULTS OBTAINED OR DAMAGES INCURRED FROM USE OF SUCH INFORMATION IN WHOLE OR IN PART.




CONTACT HOLE PATTERN

- NOTES:
1. MATERIALS AND FINISHES:
INSULATOR: GLASS FILLED POLYESTER PER ASTM D5927, UL 94V-0, BLUE COLOR.
SIGNAL CONTACTS: PRECISION MACHINED COPPER ALLOY WITH BERYLLIUM COPPER CLIP, 0.000050 [1.27µ] GOLD OVER NICKEL.
POWER CONTACTS: MACHINED OF HIGH CONDUCTIVITY COPPER ALLOY, GOLD FLASH OVER NICKEL PLATE.
SHELLS: STEEL, ZINC PLATED WITH CHROMATE SEAL.
SPACERS: STEEL, ZINC PLATED WITH CHROMATE SEAL.
JACKSCREWS: STEEL WITH ZINC PLATE.
 2. DETAILED PRODUCT, ELECTRICAL, AND MECHANICAL INFORMATION IS AVAILABLE IN THE LATEST STANDARD DENSITY COMBO-D PRODUCT PUBLICATION.
VISIT CONNECTPOSITRONIC.COM/PRODUCTS/1/STANDARDENSITYCOMBO-D-OR-CONNECTPOSITRONIC.COM.
 3. DIMENSIONS ARE IN INCHES [MILLIMETERS].

DATE	REV	REVISION/RECORD	APP	DR	CK
8-09	NC	ECO 31056	RCW	BS	TK
3-24	A	ECO 32270	COLL	BE	COLL
10					

SK10762



POSITRONIC INDUSTRIES INC.
www.connectpositronic.com

DECIMAL TOL. ± 0.015 [0.38]	CBM SERIES	SCALE N.T.S.	DRAWN BY B SHELEBY	FSCM 28198
ANGULAR TOL. ± 5°	TITLE CBM7W2S37S0T0	DATE 8-05-09	DRAWING NUMBER SK10762	REV. A