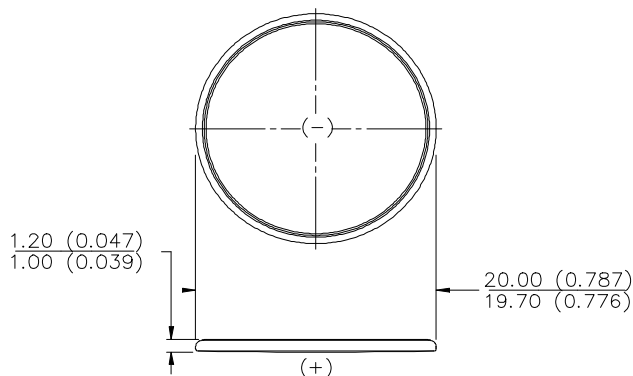


ENERGIZER NO. CR2012



Industry Standard Dimensions in mm (inches)


Chemical System: Lithium / Manganese Dioxide (Li/MnO₂)

Battery Voltage: 3.0 Volts

Average Weight: 1.3 grams (0.04 oz.)

Volume: 0.3 cubic centimeters (0.02 cubic inch)

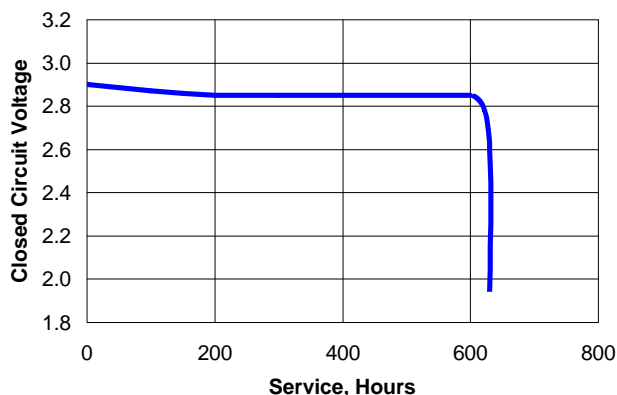
Average Capacity: 58 mAh to 2.0 volts
(Rated at 30k ohms continuous at 21°C)

Maximum Reverse
Charge Current: 1 microampere

Energy Density: 129 milliwatt hr/g, 561 milliwatt hr/cc

TYPICAL DISCHARGE CURVE

Simulated Test @ 21°C (70°F)



Simulated Application Test **Estimated Average Service at 21°C (70°F)**

Schedule:	Typical Drains at 2.9V (microamperes)	Load (ohms)	Cutoff Voltage
			2.0V
24 hours/day	97	30,000	613 Hours

INTERNAL RESISTANCE CHARACTERISTICS

Pulse Test @ 21°C (70°F)

Schedule: Continuous for background

2 seconds X 12 times/day for pulse

Typical Background Drain @ 2.9V (milliamperes):

0.097 milliamperes

Typical Pulse Drain @ 2.6V (milliamperes):

6.80 milliamperes

Background Load:

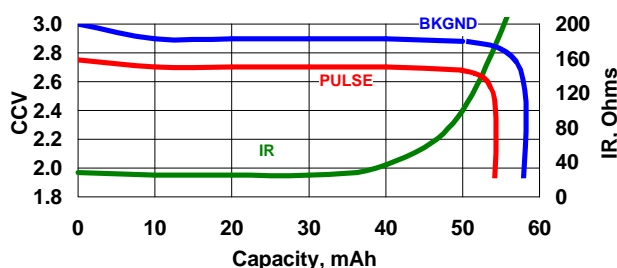
30k ohms

Pulse Load:

400 ohms

IR CHARACTERISTICS

Pulse Test @ 21°C (70°F)



Important Notice

This data sheet contains information specific to batteries manufactured at the time of its publication.

Contents herein do not constitute a warranty.

Copyright © Eveready Battery Co. Inc. - All Rights Reserved