

AN-1955 LM5009A Evaluation Board

1 Introduction

The LM5009AEVAL evaluation board provides the design engineer with a fully functional buck regulator, employing the constant on-time (COT) operating principle. This evaluation board provides a 5V output over an input range of 8V to 75V. The circuit delivers load currents to 150 mA, with current limit set at a nominal 260 mA.

The board's specification are:

- Input Voltage: 8V to 75V
- Output Voltage: 5V
- Maximum load current: 150 mA
- Minimum load current: 0A
- Current Limit: 260 mA (nominal)
- Measured Efficiency: 90.6% ($V_{IN} = 8V$, $I_{OUT} = 100\text{ mA}$)
- Nominal Switching Frequency: 130 kHz
- Size: 2.6 in. x 1.6 in.

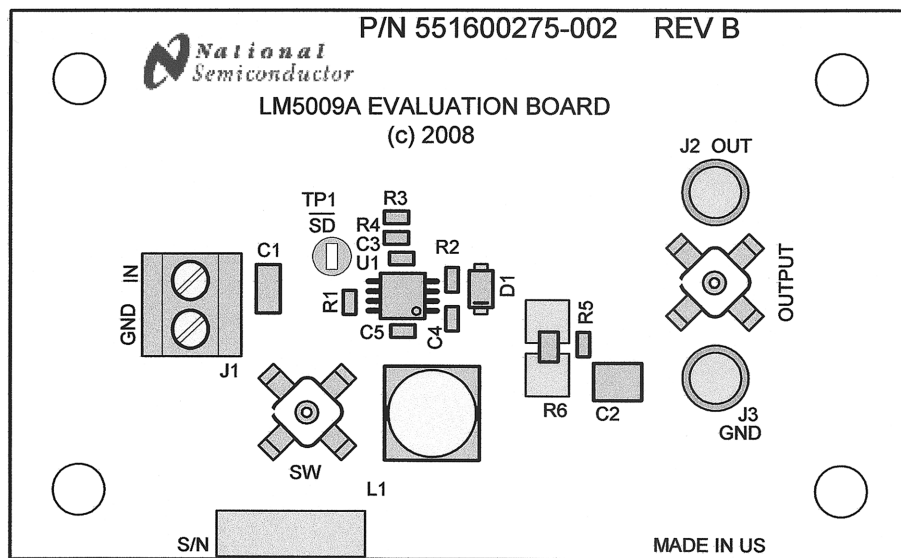


Figure 1. Evaluation Board - Top Side

2 Theory of Operation

Refer to the evaluation board schematic in [Figure 5](#). When the circuit is in regulation, the buck switch is on each cycle for a time determined by R1 and VIN according to the equation:

$$t_{ON} = \frac{1.385 \times 10^{-10} \times R1}{V_{IN}} \quad (1)$$

The on-time of this evaluation board ranges from $\approx 4.85 \mu s$ at $V_{IN} = 8V$, to $\approx 517 ns$ at $V_{IN} = 75V$. The on-time varies inversely with VIN to maintain a nearly constant switching frequency. At the end of each on-time the Minimum Off-Timer ensures the buck switch is off for at least 300 ns. In normal operation, the off-time is much longer. During the off-time, the load current is supplied by the output capacitor (C2). When the output voltage falls sufficiently that the voltage at FB is below 2.5V, the regulation comparator initiates a new on-time period. For stable, fixed frequency operation, a minimum of 25 mV of ripple is required at FB to switch the regulation comparator. The current limit threshold is $\approx 255 mA$ at $V_{IN} = 8V$, and $\approx 286 mA$ at $V_{IN} = 75V$. Refer to the *LM5009A 100V, 150 mA Constant On-Time Buck Switching Regulator (SNVS608)* data sheet for a more detailed block diagram, and a complete description of the various functional blocks.

3 Board Layout and Probing

The pictorial in [Figure 1](#) shows the placement of the circuit components. The following should be kept in mind when the board is powered:

- When operating at high input voltage and high load current, forced air flow may be necessary.
- The LM5009A, and diode D1 may be hot to the touch when operating at high input voltage and high load current.
- Use CAUTION when probing the circuit at high input voltages to prevent injury, as well as possible damage to the circuit.
- At maximum load current, the wire size and length used to connect the load becomes important. Ensure there is not a significant drop in the wires between this evaluation board and the load.

4 Board Connection/Start-up

The input connections are made to the J1 connector. The load is connected to the J2 (OUT) and J3 (GND) terminals. Ensure the wires are adequately sized for the intended load current. Before start-up a voltmeter should be connected to the input terminals, and to the output terminals. The load current should be monitored with an ammeter or a current probe. It is recommended that the input voltage be increased gradually to 8V, at which time the output voltage should be 5V. If the output voltage is correct with 8V at VIN, then increase the input voltage as desired and proceed with evaluating the circuit. DO NOT EXCEED 75V AT VIN.

5 Output Ripple Control

The LM5009A requires a minimum of 25 mVp-p ripple at the FB pin, in phase with the switching waveform at the SW pin, for proper operation. The required ripple can be supplied from ripple at VOUT, through the feedback resistors as described in Option A below. Options B and C provide lower output ripple with one or two additional components.

Option A) Lowest Cost Configuration: In this configuration R5 is installed in series with the output capacitance (C2). Since $\geq 25 mVp-p$ are required at the FB pin, R5 must be chosen to generate $\geq 50 mVp-p$ at VOUT, knowing that the minimum ripple current in this circuit is $\approx 44 mA$ at minimum VIN. Using 1.2Ω for R5, the ripple at VOUT ranges from $\approx 53 mVp-p$ to $\approx 132 mVp-p$ over the input voltage range. If the application can accept this ripple level, this is the most economical solution. The circuit is shown in [Figure 2](#) and [Figure 8](#).

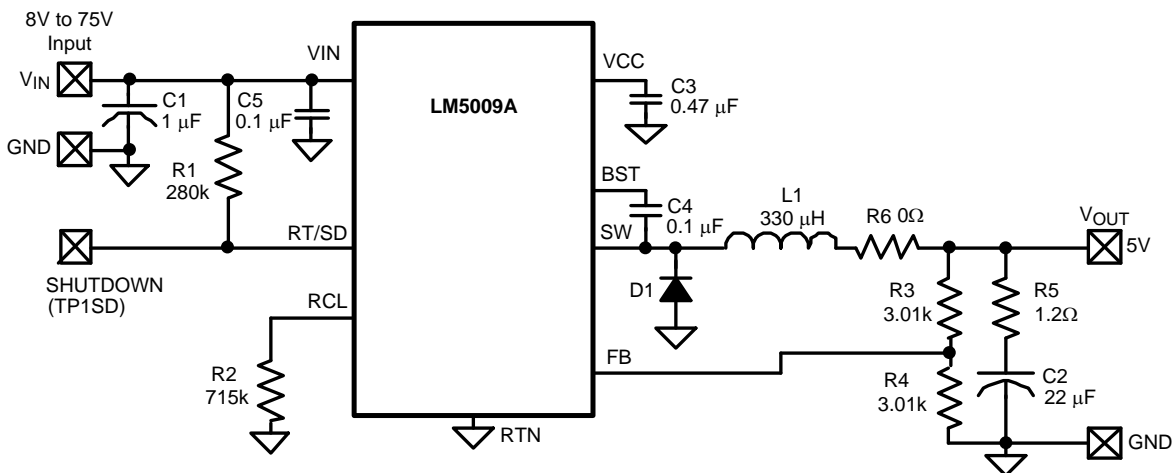


Figure 2. Lowest Cost Configuration

Option B) Intermediate Ripple Configuration: This configuration generates less ripple at V_{OUT} than option A above by the addition of one capacitor (C_{ff}) across $R3$, as shown in Figure 3.

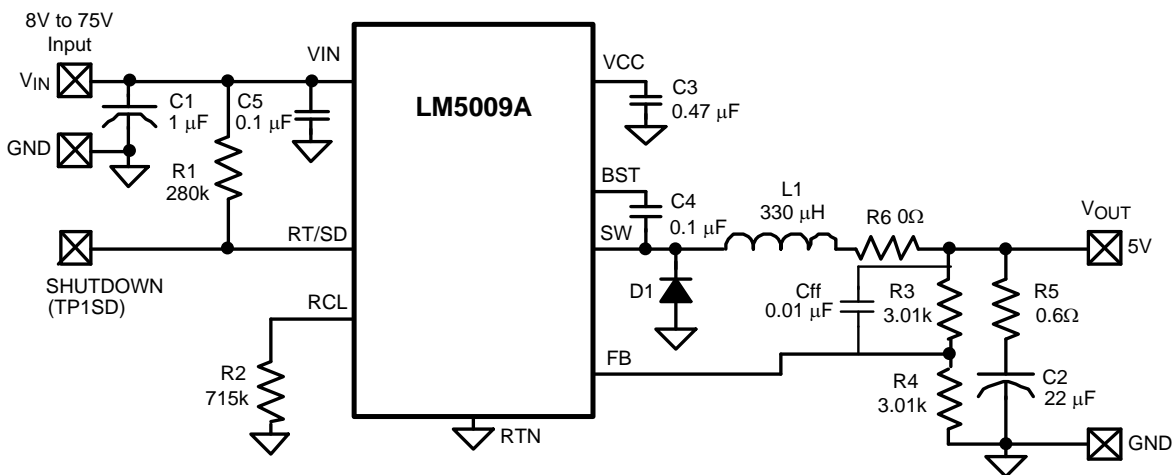


Figure 3. Intermediate Ripple Configuration

Since the output ripple is passed by C_{ff} to the FB pin with little or no attenuation, $R5$ can be reduced so the minimum ripple at V_{OUT} is ≈ 25 mVp-p. The minimum value for C_{ff} is calculated from:

$$C_{ff} \geq \frac{3 \times t_{ON(max)}}{(R3//R4)} \quad (2)$$

where $t_{ON(max)}$ is the maximum on-time (at minimum V_{IN}), and $R3//R4$ is the parallel equivalent of the feedback resistors. The ripple at V_{OUT} ranges from 26 mVp-p to 66 mVp-p over the input voltage range. See Figure 8.

Option C) Minimum Ripple Configuration: To obtain minimum ripple at V_{OUT} , $R5$ is set to 0Ω , and R_A , C_A , and C_B are added to generate the required ripple for the FB pin. In this configuration, the output ripple is determined primarily by the characteristics of the output capacitance and the inductor's ripple current. See Figure 4.

The ripple voltage required by the FB pin is generated by R_A , and C_A since the SW pin switches from -1V to V_{IN} , and the right end of C_A is a virtual ground. The values for R_A and C_A are chosen to generate a 50-100 mVp-p triangle waveform at their junction. That triangle wave is then coupled to the FB pin through C_B . The following procedure is used to calculate values for R_A , C_A and C_B :

1) Calculate the voltage V_A :

$$V_A = V_{OUT} - (V_{SW} \times (1 - (V_{OUT}/V_{IN}))) \quad (3)$$

where V_{SW} is the absolute value of the voltage at the SW pin during the off-time (typically 0.6V), and V_{IN} is the minimum input voltage. For this circuit, V_A calculates to 4.78V. This is the approximate DC voltage at the RA/CA junction, and is used in the next equation.

2) Calculate the RA x CA product:

$$RA \times CA = \frac{(V_{IN} - V_A) \times t_{ON}}{\Delta V} \quad (4)$$

where t_{ON} is the maximum on-time ($\approx 4.85 \mu s$), V_{IN} is the minimum input voltage, and ΔV is the desired ripple amplitude at the RA/CA junction, 50 mVp-p for this example.

$$RA \times CA = \frac{(8V - 4.78V) \times 4.85 \mu s}{0.05V} = 3.12 \times 10^{-4} \quad (5)$$

RA and CA are then chosen from standard value components to satisfy the above product. Typically CA is 3000 to 10000 pF, and RA is 10 k Ω to 300 k Ω . CB is chosen large compared to CA, typically 0.1 μF . The ripple at V_{OUT} is typically less than 10 mVp-p. See Figure 4 and Figure 8.

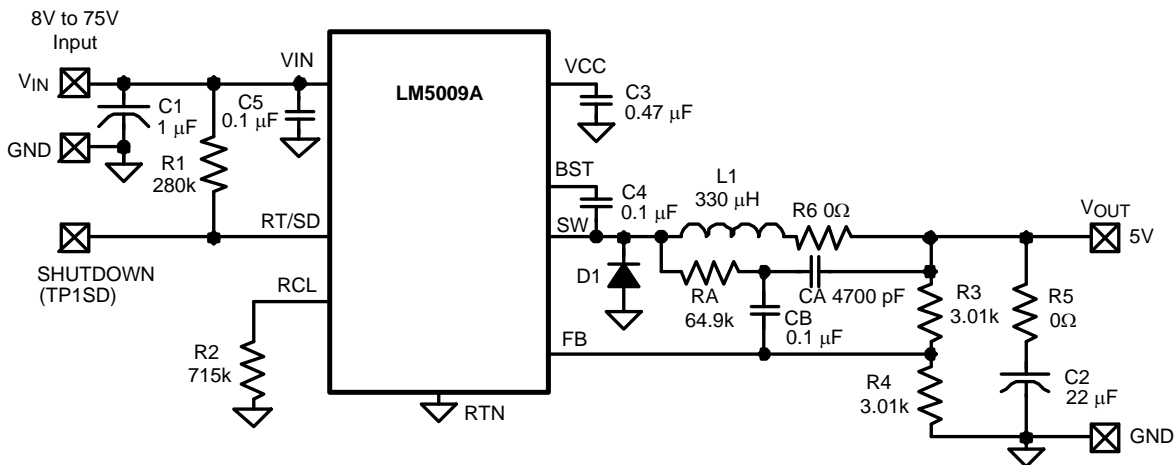


Figure 4. Minimum Output Ripple Configuration

6 Current Limit Off-Time

When current limit is detected the on-time period is immediately terminated, and the off-time forced by the LM5009A must be greater than the maximum normal off-time, which occurs at maximum input voltage. The longer-than-normal off-time is necessary to allow the inductor current to decrease at least as much, if not more, than the current increase which occurred during the on-time leading to the current limit detection. The forced off-time is determined by the resistor at the RCL pin (R_2), and is calculated from the following:

$$T_{OFF} = 10^{-5} / (0.285 + (V_{FB} / 6.35 \times 10^{-6} \times R_2)) \quad (6)$$

where V_{FB} is the voltage at the FB pin at the time of the current limit detection. In this evaluation board, the maximum normal off-time is approximately 7.2 μs (at 75V). Due to the 25% tolerance of the on-time, the off-time tolerance is also 25%, yielding a maximum possible off-time of 9 μs . Allowing for the response time of the current limit detection circuit (350 ns) the maximum off-time, for the purpose of this calculation, is increased to 9.35 μs . This is increased an additional 25% to 11.7 μs to allow for the tolerances of the above equation. Using the above equation, R_2 calculates to 691 k Ω at $V_{FB} = 2.5V$. A standard value 715 k Ω resistor is used.

7 Monitor The Inductor Current

The inductor's current can be monitored or viewed on a scope with a current probe. Remove R6, and install an appropriate current loop across the two large pads where R6 was located. In this way the inductor's ripple current and peak current can be accurately determined.

8 Scope Probe Adapters

Scope probe adapters are provided on this evaluation board for monitoring the waveform at the SW pin, and at the circuit's output (V_{OUT}), without using the probe's ground lead which can pick up noise from the switching waveforms. The probe adapters are suitable for Tektronix P6137 or similar probes, with a 0.135" diameter.

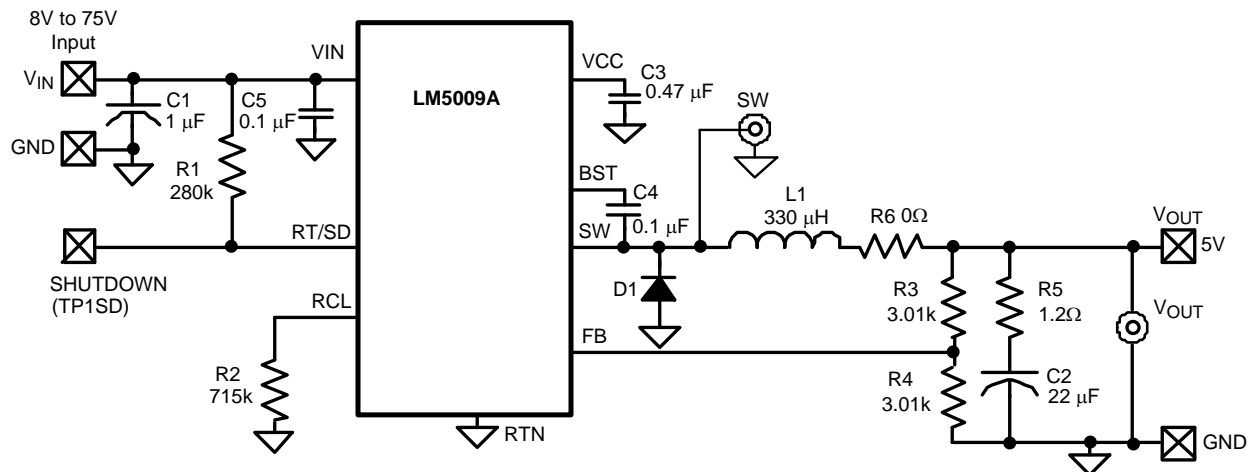


Figure 5. Complete Evaluation Board Schematic (As Supplied)

Table 1. Bill of Materials

Item	Description	Mfg., Part Number	Package	Value
C1	Ceramic Capacitor	TDK C3216X7R2A105M or Murata GRM31CR72A105KA01L	1206	1 μ F, 100V
C2	Ceramic Capacitor	TDK C3225X7R1C226M or Murata GRM32ER71C226KE18L	1210	22 μ F, 16V
C3	Ceramic Capacitor	TDK C1608X7R1C474M or TDK C1608X7R1C474K	0603	0.47 μ F, 16V
C4	Ceramic Capacitor	TDK C1608X7R1H103M	0603	0.01 μ F, 50V
C5	Ceramic Capacitor	TDK C2012X7R2A104M or Murata GRM188R72A104KA35D	0805	0.1 μ F, 100V
D1	Schottky Diode	Diodes Inc. DFLS1100 or Central Semi CMMSH1-100	Power DI123	100V, 1A
L1	Power Inductor	Coiltronics DR73-331-R or TDK SLF10145T-331-MR54	10mm x 10mm	330 μ H
R1	Resistor	Vishay CRCW06032803F	0603	280k
R2	Resistor	Vishay CRCW06037153F	0603	715k
R3, R4	Resistor	Vishay CRCW06033011F	0603	3.01k
R5	Resistor	Panasonic ERJ-3RQFIR2V	0603	1.2 ohms
R6	Resistor	Vishay CRCW08050000Z	0805	0 Ω Jumper
U1	Switching Regulator	Texas Instruments LM5009A	VSSOP-8, WSON-8	

9 Circuit Performance

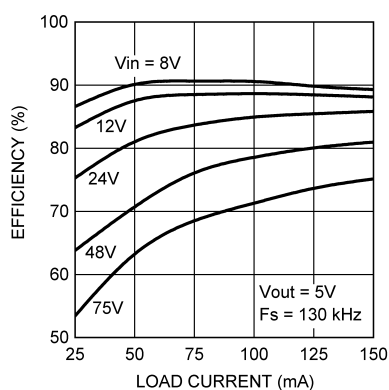


Figure 6. Efficiency vs Load Current

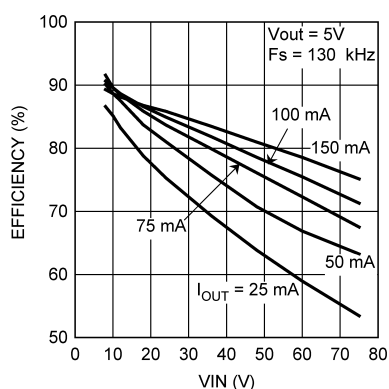


Figure 7. Efficiency vs Input Voltage

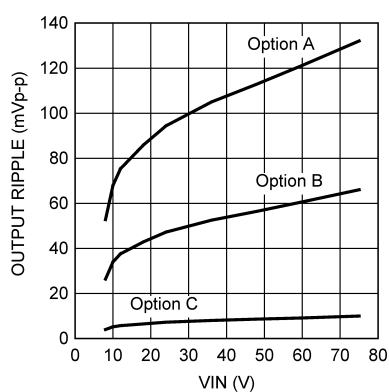


Figure 8. Output Voltage Ripple

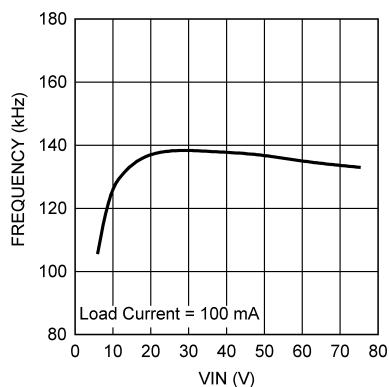


Figure 9. Switching Frequency vs. Input Voltage

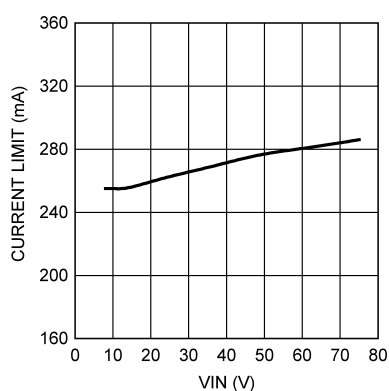


Figure 10. Current Limit vs Input Voltage

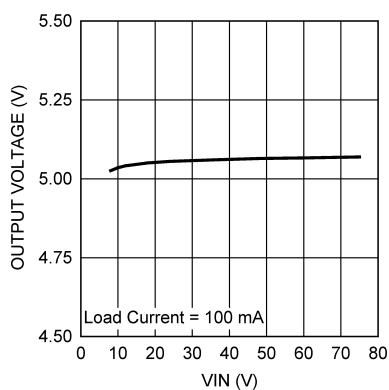


Figure 11. Line Regulation

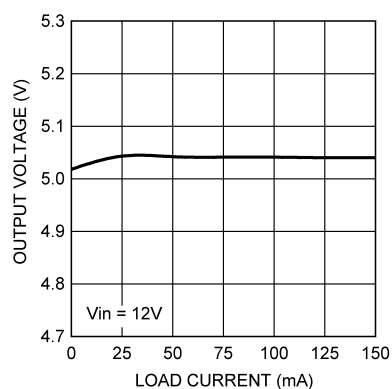
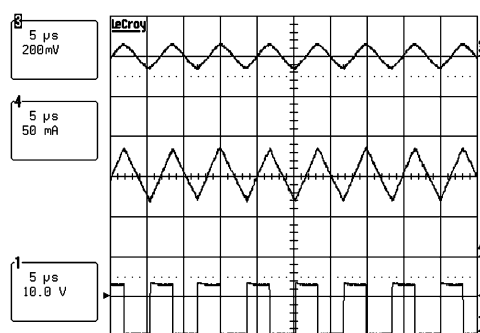


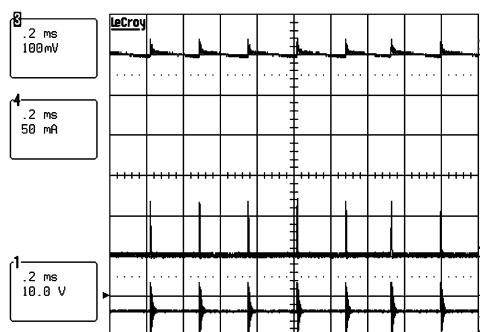
Figure 12. Load Regulation

10 Typical Waveforms



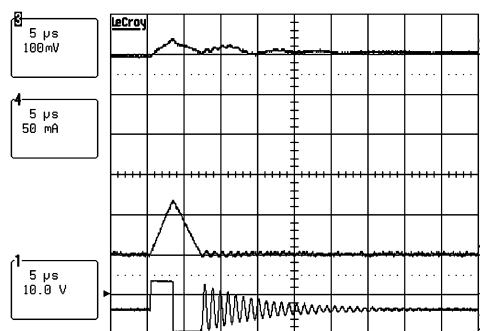
Trace 1 = SW Pin
Trace 3 = V_{OUT}
Trace 4 = Inductor Current
 $V_{in} = 12V$, $I_{out} = 100\text{ mA}$

Figure 13. Continuous Conduction Mode



Trace 1 = SW Pin
Trace 3 = V_{OUT}
Trace 4 = Inductor Current
 $V_{in} = 12V$, $I_{out} = 0\text{ mA}$

Figure 14. Discontinuous Conduction Mode



Trace 1 = SW Pin
Trace 3 = V_{OUT}
Trace 4 = Inductor Current
 $V_{in} = 12V$, $I_{out} = 0\text{ mA}$

Figure 15. Discontinuous Conduction Mode

11 PC Board Layout

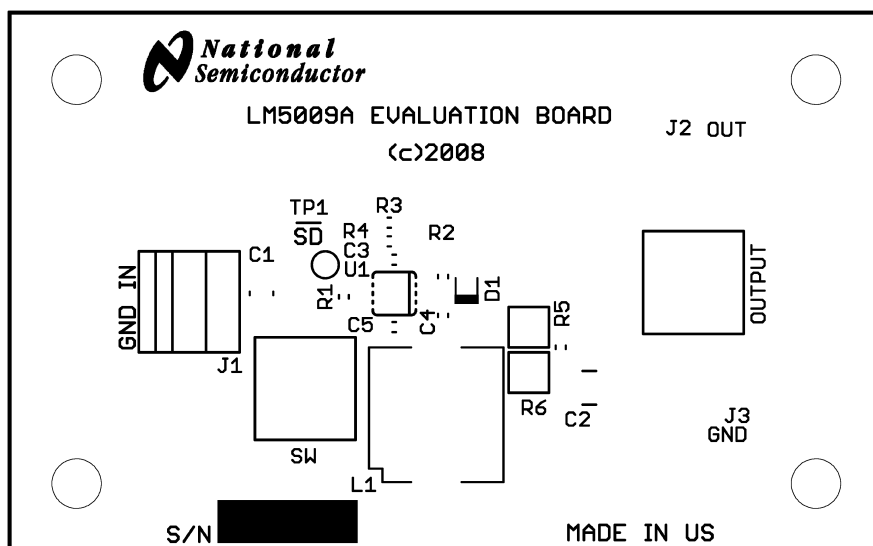


Figure 16. Board Silkscreen

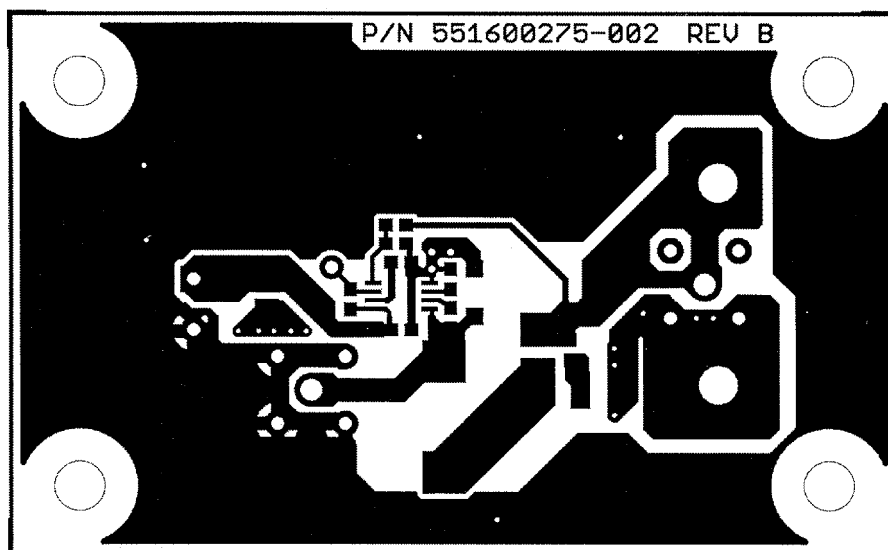


Figure 17. Board Top Layer

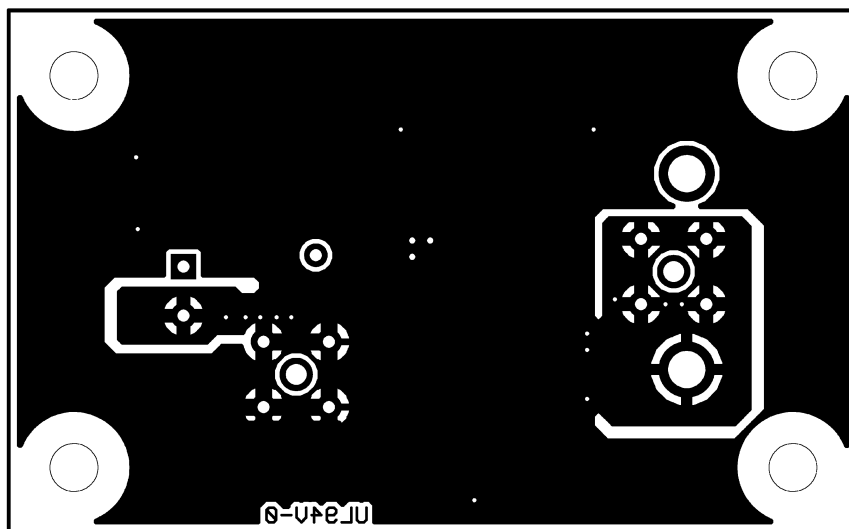


Figure 18. Board Bottom Layer (Viewed from Top)

IMPORTANT NOTICE

Texas Instruments Incorporated and its subsidiaries (TI) reserve the right to make corrections, enhancements, improvements and other changes to its semiconductor products and services per JESD46, latest issue, and to discontinue any product or service per JESD48, latest issue. Buyers should obtain the latest relevant information before placing orders and should verify that such information is current and complete. All semiconductor products (also referred to herein as "components") are sold subject to TI's terms and conditions of sale supplied at the time of order acknowledgment.

TI warrants performance of its components to the specifications applicable at the time of sale, in accordance with the warranty in TI's terms and conditions of sale of semiconductor products. Testing and other quality control techniques are used to the extent TI deems necessary to support this warranty. Except where mandated by applicable law, testing of all parameters of each component is not necessarily performed.

TI assumes no liability for applications assistance or the design of Buyers' products. Buyers are responsible for their products and applications using TI components. To minimize the risks associated with Buyers' products and applications, Buyers should provide adequate design and operating safeguards.

TI does not warrant or represent that any license, either express or implied, is granted under any patent right, copyright, mask work right, or other intellectual property right relating to any combination, machine, or process in which TI components or services are used. Information published by TI regarding third-party products or services does not constitute a license to use such products or services or a warranty or endorsement thereof. Use of such information may require a license from a third party under the patents or other intellectual property of the third party, or a license from TI under the patents or other intellectual property of TI.

Reproduction of significant portions of TI information in TI data books or data sheets is permissible only if reproduction is without alteration and is accompanied by all associated warranties, conditions, limitations, and notices. TI is not responsible or liable for such altered documentation. Information of third parties may be subject to additional restrictions.

Resale of TI components or services with statements different from or beyond the parameters stated by TI for that component or service voids all express and any implied warranties for the associated TI component or service and is an unfair and deceptive business practice. TI is not responsible or liable for any such statements.

Buyer acknowledges and agrees that it is solely responsible for compliance with all legal, regulatory and safety-related requirements concerning its products, and any use of TI components in its applications, notwithstanding any applications-related information or support that may be provided by TI. Buyer represents and agrees that it has all the necessary expertise to create and implement safeguards which anticipate dangerous consequences of failures, monitor failures and their consequences, lessen the likelihood of failures that might cause harm and take appropriate remedial actions. Buyer will fully indemnify TI and its representatives against any damages arising out of the use of any TI components in safety-critical applications.

In some cases, TI components may be promoted specifically to facilitate safety-related applications. With such components, TI's goal is to help enable customers to design and create their own end-product solutions that meet applicable functional safety standards and requirements. Nonetheless, such components are subject to these terms.

No TI components are authorized for use in FDA Class III (or similar life-critical medical equipment) unless authorized officers of the parties have executed a special agreement specifically governing such use.

Only those TI components which TI has specifically designated as military grade or "enhanced plastic" are designed and intended for use in military/aerospace applications or environments. Buyer acknowledges and agrees that any military or aerospace use of TI components which have **not** been so designated is solely at the Buyer's risk, and that Buyer is solely responsible for compliance with all legal and regulatory requirements in connection with such use.

TI has specifically designated certain components as meeting ISO/TS16949 requirements, mainly for automotive use. In any case of use of non-designated products, TI will not be responsible for any failure to meet ISO/TS16949.

Products

Audio	www.ti.com/audio
Amplifiers	amplifier.ti.com
Data Converters	dataconverter.ti.com
DLP® Products	www.dlp.com
DSP	dsp.ti.com
Clocks and Timers	www.ti.com/clocks
Interface	interface.ti.com
Logic	logic.ti.com
Power Mgmt	power.ti.com
Microcontrollers	microcontroller.ti.com
RFID	www.ti-rfid.com
OMAP Applications Processors	www.ti.com/omap
Wireless Connectivity	www.ti.com/wirelessconnectivity

Applications

Automotive and Transportation	www.ti.com/automotive
Communications and Telecom	www.ti.com/communications
Computers and Peripherals	www.ti.com/computers
Consumer Electronics	www.ti.com/consumer-apps
Energy and Lighting	www.ti.com/energy
Industrial	www.ti.com/industrial
Medical	www.ti.com/medical
Security	www.ti.com/security
Space, Avionics and Defense	www.ti.com/space-avionics-defense
Video and Imaging	www.ti.com/video

TI E2E Community

e2e.ti.com